



Release 3.4, Ratified, Feb 2019



## Document Summary

Document Item	Current Value
Document Name	Transport Capacity Booking and Response Business Message Standard (BMS)
Document Date	Feb 2019
Document Version	3.4
Document Issue	1
Document Status	Ratified

## Work Request Reference

Date of WR Submission to GSMP:	WR Submitter(s):	Refer to Work Request (WR) Number(s):
08-Jul-2009	DHL	09-000189
25-Jun-2014	GS1 Global Office	14-000110
03-Oct-2018	GS1 GO	18-000319

## Business Requirements Document (BRAD) Reference

BRAD Title	BRAD Issue Date	BRAD Version
Transport Planning	March 2011	1.0

## Document Change History

Date of Change	Version	Changed By	Reason for Change	Summary of Change
12-Jan-2012	BMS 3.0 – Issue 1	Mark Van Eeghem	BMS Release 3.0	See summary of changes
01-May-2013	BMS 3.1 – Issue 1	Coen Janssen	BMS Release 3.1	See summary of changes
15-Sep-2014	BMS 3.2 – Issue 1	Ewa Iwicka	BMS Release 3.2	See summary of changes
01-Mar-2017	BMS 3.3 – Issue 1	Ewa Iwicka	BMS Release 3.3	See summary of changes
15-Oct-2018	BMS 3.4 – Draft for community review	Ewa Iwicka	BMS Release 3.4	See summary of changes
10-Apr-2019	BMS 3.4 – Issue 1	Jean-Luc Champion	BMS Release 3.4	See summary of changes

## Disclaimer

GS1®, under its IP Policy, seeks to avoid uncertainty regarding intellectual property claims by requiring the participants in the Work Group that developed this **Transport Capacity Booking and Response Business Message Standard (BMS)** to agree to grant to GS1 members a royalty-free licence or a RAND licence to Necessary Claims, as that term is defined in the GS1 IP Policy. Furthermore, attention is drawn to the possibility that an implementation of one or more features of this Specification may be the subject of a patent or other intellectual property right that does not involve a Necessary Claim. Any such patent or other intellectual property right is not subject to the licencing obligations of GS1. Moreover, the agreement to grant licences provided under the GS1 IP Policy does not include IP rights and any claims of third parties who were not participants in the Work Group.

Accordingly, GS1 recommends that any organization developing an implementation designed to be in conformance with this Specification should determine whether there are any patents that may encompass a specific implementation that the organisation is developing in compliance with the Specification and whether a licence under a patent or other intellectual property right is needed. Such a determination of a need for licencing should be made in view of the details of the specific system designed by the organisation in consultation with their own patent counsel.

THIS DOCUMENT IS PROVIDED "AS IS" WITH NO WARRANTIES WHATSOEVER, INCLUDING ANY WARRANTY OF MERCHANTABILITY, NONINFRINGEMENT, FITNESS FOR PARTICULAR PURPOSE, OR ANY WARRANTY OTHERWISE ARISING OUT OF THIS SPECIFICATION. GS1 disclaims all liability for any damages arising from use or misuse of this Standard, whether special, indirect, consequential, or compensatory damages, and including liability for infringement of any intellectual property rights, relating to use of information in or reliance upon this document.

GS1 retains the right to make changes to this document at any time, without notice. GS1 makes no warranty for the use of this document and assumes no responsibility for any errors which may appear in the document, nor does it make a commitment to update the information contained herein.

GS1 and the GS1 logo are registered trademarks of GS1 AISBL.

# Table of Contents

<b>1</b>	<b>Business Domain View .....</b>	<b>5</b>
1.1	Introduction .....	5
1.2	References .....	5
<b>2</b>	<b>Business Context .....</b>	<b>5</b>
<b>3</b>	<b>Business Transaction View .....</b>	<b>6</b>
3.1	Business Transaction – Manage Transport Capacity Booking .....	6
3.2	Business Transaction - Issue Transport Capacity Booking .....	7
3.3	Business Transaction - Respond to Transport Capacity Booking.....	7
<b>4</b>	<b>Business Information View .....</b>	<b>9</b>
4.1	Transport Capacity Booking .....	9
4.1.1	Transport Capacity Booking Space Requirements.....	13
4.1.2	Transport Capacity Booking Transport Movement.....	15
4.2	Transport Capacity Booking Response.....	17
4.3	Enumerations (message specific) .....	19
4.4	Code Lists .....	19
<b>5</b>	<b>Business Message Examples .....</b>	<b>19</b>
5.1	Example 1 .....	19
5.2	Example 2.....	21
5.3	Example 3.....	22
<b>6</b>	<b>Implementation Considerations.....</b>	<b>22</b>
6.1	User Guide .....	22
6.2	Message Specific Considerations .....	23
<b>7</b>	<b>Summary of Changes .....</b>	<b>23</b>
7.1	BMS Release 3.0 .....	23
7.2	BMS Release 3.1 .....	23
7.3	BMS Release 3.2 .....	23
7.4	BMS Release 3.3 .....	24
7.5	BMS Release 3.4 .....	25
<b>8</b>	<b>Appendices .....</b>	<b>25</b>
<b>9</b>	<b>Acknowledgements.....</b>	<b>25</b>
9.1.1	Work Group .....	25
9.1.2	Development Team Members .....	27

# 1 Business Domain View

## 1.1 Introduction

### Message Definition

#### Transport Capacity Booking Message Definition

Transport Capacity Booking is the process to reserve space for estimated consignments or shipments. Typically the booking process covers a period of less than a week prior to actual shipments covered by capacity booking moving through the Logistics Network. The Logistic Services Buyer will send transport capacity booking requests to the Logistic Services Seller.

#### Transport Capacity Response Message Definition

The Transport Capacity Booking Response is sent by the Logistic Services Seller to the Logistic Services Buyer, accepting or rejecting the Transport Capacity Booking.

### Principles

Capacity booking requests are used to reserve space *prior to the goods being ready for despatch*. At the point that the goods are actually ready to be moved and have been assigned a shipment or consignment identification, the Transport Execution process begins with the Transport Instruction message. The Transport Execution process is supported by separate Business Message Standards.

In cases where the Logistic Services Buyer and Logistic Services Seller share capacity forecasts, the capacity booking process will be used to drive the short-term Capacity Planning process of the Logistic Services Seller based on more detailed information from the Logistic Services Buyer in terms of quantities (volume, weights, pallets, trucks, etc..) than was shared during the capacity forecasting process. In this case the booking process "consumes" the long-term reservation of capacity expressed in the forecast. If all runs well, the total long-term forecasted capacity for the period should be close to the total capacity booked in the short-term capacity booking process for the same period. The forecasting process is supported by separate Business Message Standards.

## 1.2 References

Reference Name	Description
BRAD Transport Planning (GS1, 2011)	
Logistics Interoperability Model (GS1, 2007)	
BMS eCom Domain Common Library Release 3.4	The documented design of components that are used in multiple messages within the eCom domain.
BMS Shared Common Library Release 3.4	The documented design of components that are used in multiple messages within the eCom domain and GDSN.

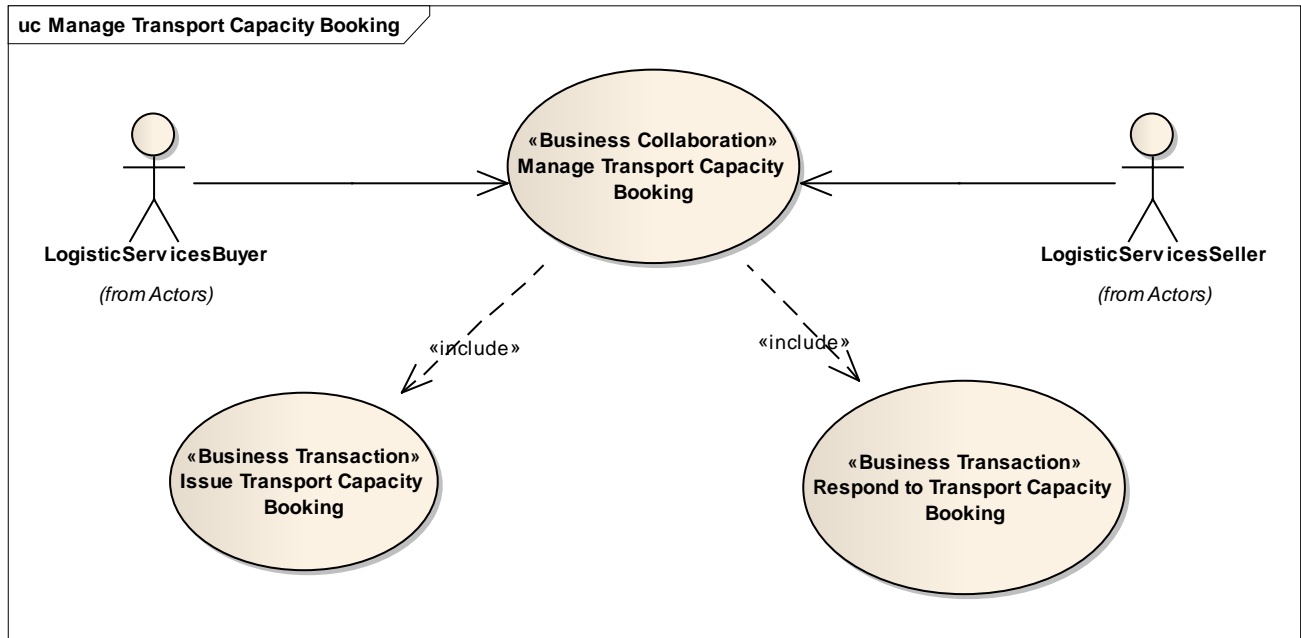
# 2 Business Context

Context Category	Value(s)
Industry	All
Geopolitical	All
Product	All
Process	Transport Management
System Capabilities	GS1 System
Official Constraints	None

## 3 Business Transaction View

### 3.1 Business Transaction – Manage Transport Capacity Booking

#### Use Case Diagram



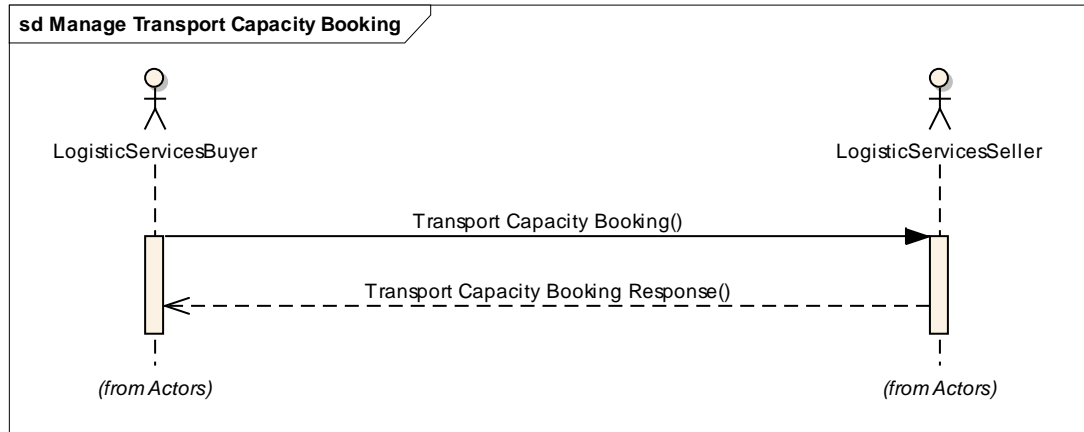
#### Use Case Description

Use Case ID	UC-2
Use Case Name	Manage Transport Capacity Booking
Use Case Description	The Logistic Services Buyer (LSB) requests the Logistics Services Seller (LSS) to reserve space on a means of transport for goods items to be transported together. The LSS may accept the booking, conditionally accept the booking, or reject the booking.
Actors (Goal)	Logistic Services Buyer (LSB) Logistic Services Seller (LSS)
Performance Goals	
Preconditions	The LSB and LSS have a relationship. The LSB has plans for goods items to be transported and knows: <ul style="list-style-type: none"> <li>■ The mode of transport</li> <li>■ The type of means of transport</li> </ul>
Post conditions	The LSB and LSS may or may not have a commercial agreement on the requested space booking. An agreement has been made between the LSB and the LSS as to whether or not final transport instructions and/or transport arrangements are required and what will be the next steps to take in either case.
Scenario	The Logistics Service Buyer sends a request to the Logistic Service Seller to make a reservation for space for movement of goods items. The LSS checks the availability of space for the requested booking on the means of transport and either confirms the space booking or does not accept the space booking.
Alternative Scenario	

### Activity Diagram(s)

Not applicable

### Sequence Diagram(s)



## 3.2 Business Transaction - Issue Transport Capacity Booking

Use Case ID	UC-2A
Use Case Name	Issue Transport Capacity Booking
Use Case Description	The Logistic Services Buyer requests the Logistic Services Seller to reserve space on a means of transport for goods items to be transported together.
Actors (Goal)	Logistic Services Buyer (LSB) Logistic Services Seller (LSS)
Performance Goals	
Preconditions	The LSB has goods items to be transported and knows: <ul style="list-style-type: none"> <li>The mode of transport</li> <li>The type of means of transport</li> </ul>
Post conditions	The LSS receives a booking request.
Scenario	The LSB sends a request to the LSS to reserve space on a means of transport for goods items to be transported together.
Alternative Scenario	

## 3.3 Business Transaction - Respond to Transport Capacity Booking

Use Case ID	UC-2B
Use Case Name	Respond to Transport Capacity Booking
Use Case Description	The Logistic Services Seller confirms space booking or does not accept the space booking
Actors (Goal)	Logistic Services Buyer (LSB) Logistic Services Seller (LSS)
Performance Goals	
Preconditions	The LSB and LSS have a relationship. The LSB has submitted a booking request to the LSS. In their interoperation agreement the LSB and LSS have agreed to use a response as mandatory step in the transport capacity booking process.

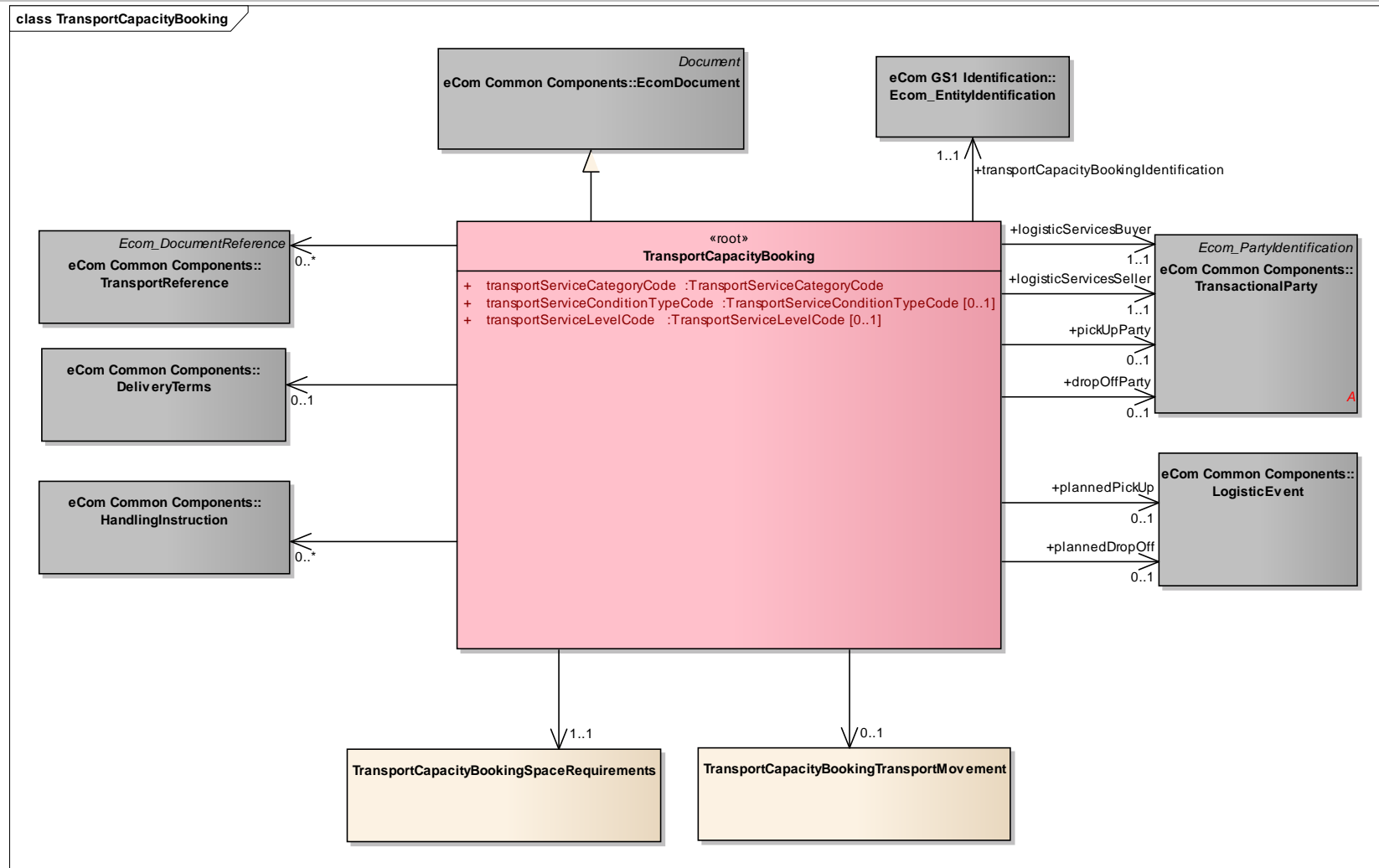
Use Case ID	UC-2B
Post conditions	<p>The LSB and LSS may or may not have a commercial agreement on the requested space booking.</p> <p>An agreement has been made between the LSB and the LSS on the next steps.</p>
Scenario	<p>The LSS checks availability of the requested space booking on the means of transport and either confirms the space booking or does not accept the space booking</p> <p>The LSS sends the response to the LSB.</p>
Alternative Scenario	



## 4 Business Information View

### 4.1 Transport Capacity Booking

Class diagram



## GDD report

The content of the TransportCapacityBooking class, its structure and component definitions can be accessed in the Global Data Dictionary: [http://apps.gs1.org/GDD/bms/Version3\\_4/Pages/bieDetails.aspx?semanticURN=urn:gs1:gdd:bie:TransportCapacityBookingSpaceRequirements](http://apps.gs1.org/GDD/bms/Version3_4/Pages/bieDetails.aspx?semanticURN=urn:gs1:gdd:bie:TransportCapacityBookingSpaceRequirements)

Content	Attribute / Role	Datatype / Secondaryclass	Multiplicity	Definition	Requirements
TransportCapacityBooking				The Transport Capacity Booking is sent by the Logistic Services Buyer to the Logistic Services Seller, to reserve transport resources for estimated consignments or shipments.	
Association	plannedDropOff	LogisticEvent	0..1	Details on the planned delivery of the goods.	BRAD Transport Planning - BKH8
Generalization		EcomDocument		Basic information about the content of the message including version number, creation date and time.	BRAD Transport Planning - BKH2, BKH3
Association		DeliveryTerms	0..1	The applicable legal, customs, financial and insurance terms that have been agreed for a goods delivery.	BRAD Transport Planning - BKH11
Association	pickUpParty	TransactionalParty	0..1	The party where the goods will be collected.	BRAD Transport Planning - BKH6, BKH7
Association	logisticServices Seller	TransactionalParty	1..1	A party that provides logistics services to another party.	BRAD Transport Planning - BKH5
Association		TransportCapacityBookingTransportMovement	0..1	Details for the booked movement of the goods	BRAD Transport Planning - BKH14
Association		HandlingInstruction	0..*	Instructions on the way to treat the goods during transport and storage.	BRAD Transport Planning - BKH9
Association		TransportReference	0..*	References to associated information in support of related business processes. For example: purchase order number, bank account number.	BRAD Transport Planning - BKH10
Association	plannedPickUp	LogisticEvent	0..1	Details on the planned collection of the goods.	BRAD Transport Planning - BKH8
Association	dropOffParty	TransactionalParty	0..1	The party where the goods will be delivered.	BRAD Transport Planning - BKH6, BKH7
Association	logisticServices Buyer	TransactionalParty	1..1	A party that purchases logistics services from another party.	BRAD Transport Planning - BKH4

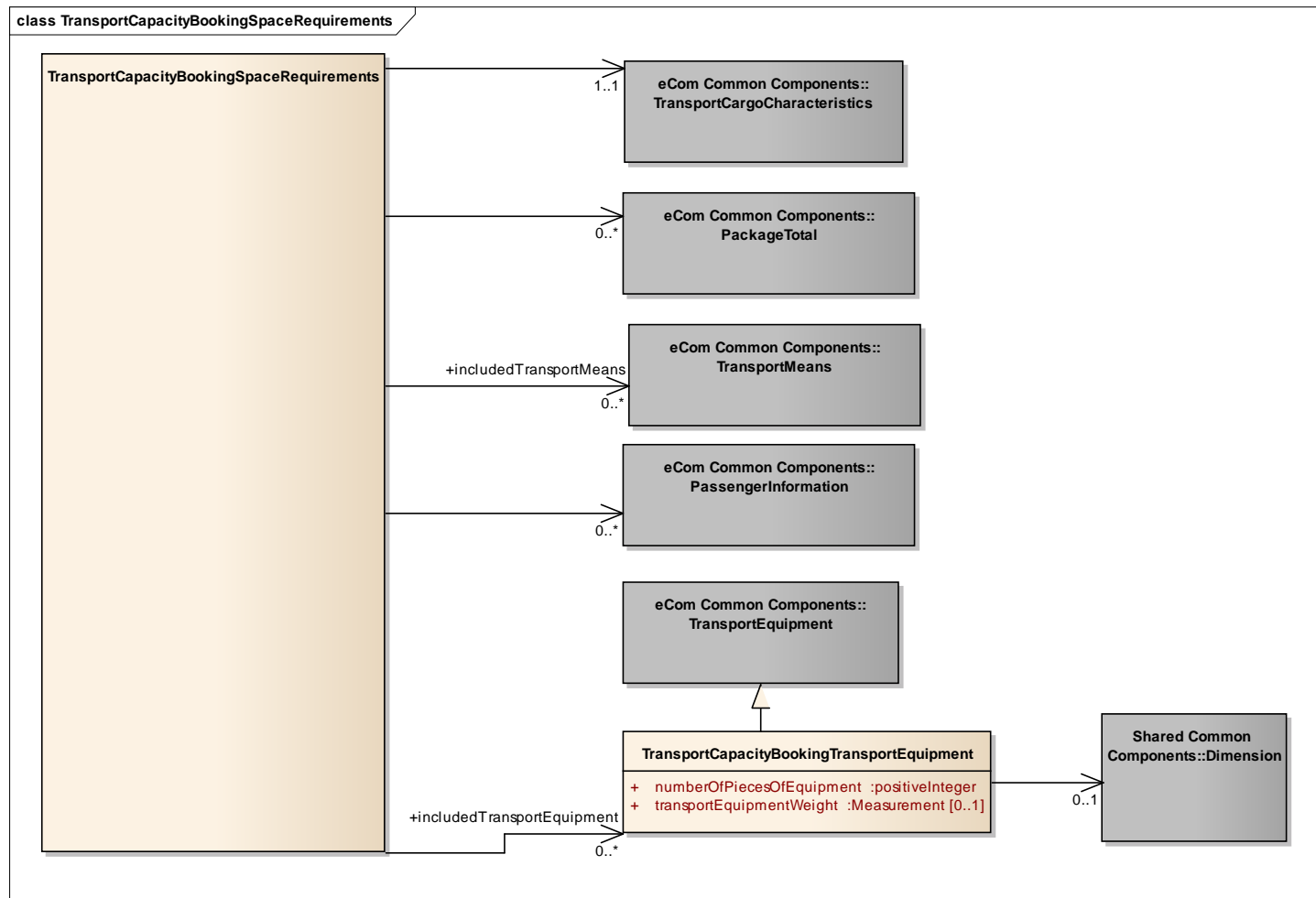
Content	Attribute / Role	Datatype / Secondaryclass	Multiplicity	Definition	Requirements
Association	transportCapacityBookingIdentification	Ecom_EntityIdentification	1..1	The identification of the transport capacity booking document.	BRAD Transport Planning - BKH1 WR 15-000340
Association		TransportCapacityBookingSpaceRequirements	1..1	Details on the booked transport space, such as volume, weight, transport equipment.	BRAD Transport Planning - BKH13
Attribute	transportServiceCategoryCode	TransportServiceCategoryCode	1..1	Code specifying the type of transport service that will be provided. For example: Courier service.	BRAD Transport Planning - BKH12
Attribute	transportServiceConditionTypeCode	TransportServiceConditionTypeCode	0..1	Code specifying the type of contractual conditions applicable to the transport service. For example: Port to port.	BRAD Transport Planning - BKH12
Attribute	transportServiceLevelCode	TransportServiceLevelCode	0..1	Code specifying the service level requested for the transport service. For example: Express service.	BRAD Transport Planning - BKH12



**Note:** Reference Shared Common Library Business Message (BMS) Release 3.4 and eCom Domain Common Library Business Message (BMS) Release 3.4 for all common information.

## 4.1.1 Transport Capacity Booking Space Requirements

### Class Diagram



## GDD Report

The content of the TransportCapacityBookingSpaceRequirements class, its structure and component definitions can be accessed in the Global Data Dictionary:

[http://apps.gs1.org/GDD/bms/Version3\\_4/Pages/bieDetails.aspx?semanticURN=urn:gs1:gdd:bie:TransportCapacityBookingSpaceRequirements](http://apps.gs1.org/GDD/bms/Version3_4/Pages/bieDetails.aspx?semanticURN=urn:gs1:gdd:bie:TransportCapacityBookingSpaceRequirements)

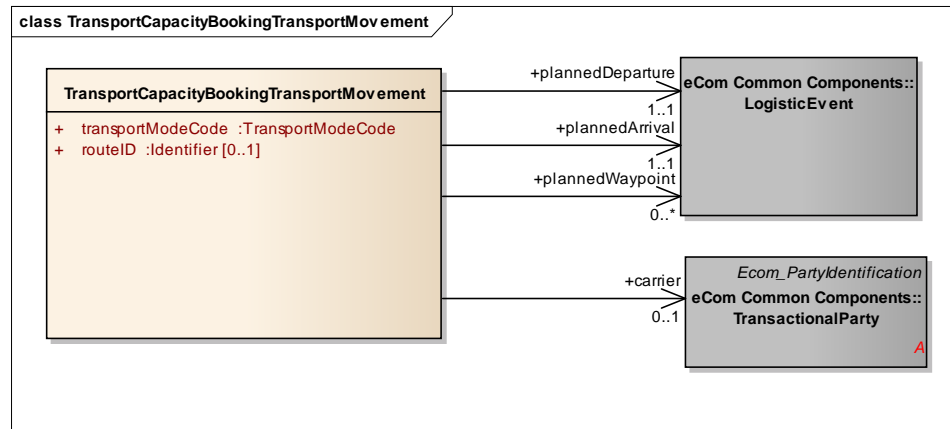
Content	Attribute / Role	Datatype / Secondaryclass	Multiplicity	Definition	Requirements
TransportCapacityBookingSpaceRequirements				Details on the booked transport space, such as volume, weight, transport equipment.	
Association		PassengerInformation	0..*	Information on passengers for which capacity is being booked.	BRAD Transport Planning - TBC6
Association		PackageTotal	0..*	Aggregate information per type of package to be transported.	BRAD Transport Planning - TBC3
Association		TransportCargoCharacteristics	1..1	Aggregate information on the goods to be transported.	BRAD Transport Planning - TBC1, TBC2
Association	includedTransportEquipment	TransportCapacityBookingTransportEquipment	0..*	Information on transport means to be transported as part of the cargo.	BRAD Transport Planning - TBC4
Association	includedTransportMeans	TransportMeans	0..*	Information on transport means to be transported as part of the cargo.	BRAD Transport Planning - TBC5
TransportCapacityBookingTransportEquipment				Information on transport means to be transported as part of the cargo.	
Generalization		TransportEquipment			
Association		Dimension	0..1	Dimensions for one piece of this type of transport equipment.	
Attribute	numberOfPiecesOfEquipment	positiveInteger	1..1	The total number of pieces of the specified type of transport equipment.	
Attribute	transportEquipmentWeight	Measurement	0..1	A measure of the mass for one piece of transport equipment.	



**Note:** Reference Shared Common Library Business Message (BMS) Release 3.4 and eCom Domain Common Library Business Message (BMS) Release 3.4 for all common information.

## 4.1.2 Transport Capacity Booking Transport Movement

### Class Diagram



### GDD Report

The content of the **TransportCapacityBookingTransportMovement** class, its structure and component definitions can be accessed in the Global Data Dictionary:

[http://apps.gs1.org/GDD/bms/Version3\\_4/Pages/bieDetails.aspx?semanticURN=urn:gs1:gdd:bie:TransportCapacityBookingTransportMovement](http://apps.gs1.org/GDD/bms/Version3_4/Pages/bieDetails.aspx?semanticURN=urn:gs1:gdd:bie:TransportCapacityBookingTransportMovement)

Content	Attribute / Role	Datatype / Secondaryclass	Multiplicity	Definition	Requirements
TransportCapacityBookingTransportMovement				Details of the booked movement of the goods, such as mode of transport, locations, departure, and arrival date(s) and time(s).	
Association	plannedWaypoint	LogisticEvent	0..*	An administrative procedure taking place at a specific location that may have an effect on the lead time of a transport movement, such as dangerous goods handling, customs clearance.	
Association	plannedArrival	LogisticEvent	1..1	The location and date and time on which the means of transport for this transport movement is scheduled to arrive.	BRAD Transport Planning - TBM3

Content	Attribute / Role	Datatype / Secondaryclass	Multiplicity	Definition	Requirements
Association	plannedDeparture	LogisticEvent	1..1	The location and date and time on which the means of transport for this transport movement is scheduled to depart.	BRAD Transport Planning - TBM2
Association	carrier	TransactionalParty	0..1	A party which physically transports goods from one place to another.	BRAD Transport Planning - new requirement
Attribute	transportModeCode	TransportModeCode	1..1	Code specifying the transportation mode used for this transport movement.	
Attribute	routeID	Identifier	0..1	Unique identifier of the standard route that will be used for this transport movement.	BRAD Transport Planning - TBM1

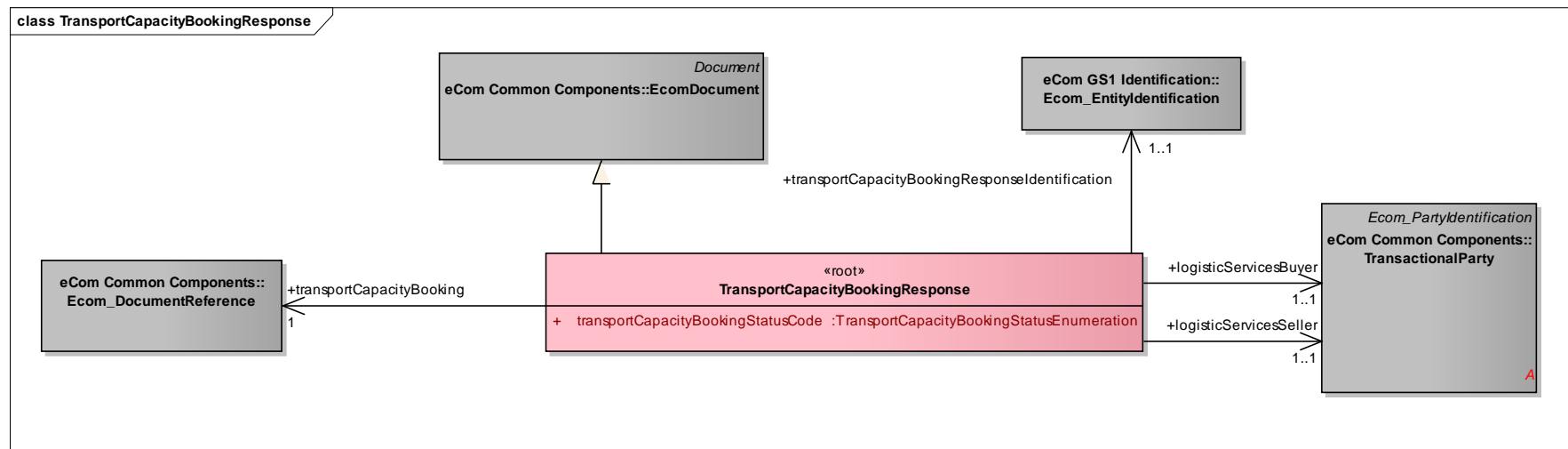


**Note:** Reference Shared Common Library Business Message (BMS) Release 3.4 and eCom Domain Common Library Business Message (BMS) Release 3.4 for all common information.



## 4.2 Transport Capacity Booking Response

### Class Diagram



### GDD Report

The content of the TransportCapacityBookingResponse class, its structure and component definitions can be accessed in the Global Data Dictionary:

[http://apps.gs1.org/GDD/bms/Version3\\_4/Pages/bieDetails.aspx?semanticURN=urn:gs1:gdd:bie:TransportCapacityBookingResponse](http://apps.gs1.org/GDD/bms/Version3_4/Pages/bieDetails.aspx?semanticURN=urn:gs1:gdd:bie:TransportCapacityBookingResponse)

Content	Attribute / Role	Datatype / Secondaryclass	Multiplicity	Definition	Requirements
TransportCapacityBookingResponse				The Transport Capacity Booking Response is sent by the Logistic Services Seller to the Logistic Services Buyer, accepting or rejecting the Transport Capacity Booking.	
Association	logisticServices Seller	TransactionalParty	1..1	A party that provides logistics services to another party.	BRAD Transport Planning - CBCH7
Association	transportCapacityBooking	DocumentReference	1..1	Reference to the Transport Capacity Booking document being confirmed.	BRAD Transport Planning - CBCH2

Content	Attribute / Role	Datatype / Secondaryclass	Multiplicity	Definition	Requirements
Association	transportCapacityBookingResponseIdentification	Ecom_EntityIdentification	1..1	The identification of the transport capacity booking response document.	BRAD Transport Planning - CBCH1 WR 15-000314
Association	logisticServicesBuyer	TransactionalParty	1..1	A party that purchases logistics services from another party.	BRAD Transport Planning - CBCH6
Generalization		EcomDocument		Basic information about the content of the message including version number, creation date and time.	BRAD Transport Planning - CBCH3, CBCH4
Attribute	transportCapacityBookingStatusCode	TransportCapacityBookingStatusEnumeration	1..1	Code specifying the type of response. Example: ACCEPTED.	BRAD Transport Planning - CBCH5



**Note:** Reference Shared Common Library Business Message (BMS) Release 3.4 and eCom Domain Common Library Business Message (BMS) Release 3.4 for all common information.

### 4.3 Enumerations (message specific)

Not applicable

### 4.4 Code Lists

Class	Codelist	GDD Link
TransportCapacityBookingResponse	TransportCapacityBookingStatusEnumeration	<a href="http://apps.gs1.org/GDD/Pages/clDetails.aspx?semanticURN=urn:gs1:gdd:cl:TransportCapacityBookingStatusEnumeration">http://apps.gs1.org/GDD/Pages/clDetails.aspx?semanticURN=urn:gs1:gdd:cl:TransportCapacityBookingStatusEnumeration</a>
TransportCapacityBooking	TransportServiceCategoryCode	<a href="http://apps.gs1.org/GDD/Pages/clDetails.aspx?semanticURN=urn:gs1:gdd:cl:TransportServiceCategoryCode">http://apps.gs1.org/GDD/Pages/clDetails.aspx?semanticURN=urn:gs1:gdd:cl:TransportServiceCategoryCode</a>
TransportCapacityBooking	TransportServiceConditionTypeCode	<a href="http://apps.gs1.org/GDD/Pages/clDetails.aspx?semanticURN=urn:gs1:gdd:cl:TransportServiceConditionTypeCode">http://apps.gs1.org/GDD/Pages/clDetails.aspx?semanticURN=urn:gs1:gdd:cl:TransportServiceConditionTypeCode</a>
TransportCapacityBooking	TransportServiceLevelCode	<a href="http://apps.gs1.org/GDD/Pages/clDetails.aspx?semanticURN=urn:gs1:gdd:cl:TransportServiceLevelCode">http://apps.gs1.org/GDD/Pages/clDetails.aspx?semanticURN=urn:gs1:gdd:cl:TransportServiceLevelCode</a>
TransportCapacityBookingTransportMovement	TransportModeCode	<a href="http://apps.gs1.org/GDD/Pages/clDetails.aspx?semanticURN=urn:gs1:gdd:cl:TransportModeCode">http://apps.gs1.org/GDD/Pages/clDetails.aspx?semanticURN=urn:gs1:gdd:cl:TransportModeCode</a>



**Note:** Refer to the Global Data Dictionary (GDD) for the code values.

## 5 Business Message Examples

### 5.1 Example 1

Logistic Service Buyer, CAB\_Manufacturing identified by GLN 1234567890128 sends a booking BOOK1234 in reference to the Transport Contract with reference 12345678 based on requirements of RQMT1234 to Logistics Service Seller XYZ\_Logistics, identified by GLN 9876543212344. The pickup party is company A, identified by GLN 1275432190141, the drop off party is company B, identified by GLN 4567891234533.

#### Party Information

GS1 Global Location Number	Party Type
1234567890128	Logistic Service Buyer
9876543212344	Logistic Service Seller
1275432190141	Pickup Party
4567891234533	Drop Off Party

#### Message Example 1

Attribute	Value
<b>TransportCapacityBooking</b>	
creationDateTime	2011-02-11T12:00:00
documentStatusCode	ORIGINAL
documentActionCode	ADD
transportServiceCategoryCode	60 (multimode)
<b>EntityIdentification (+transportCapacityBookingIdentification)</b>	
entityIdentification	BOOK1234

Attribute	Value
<b>TransactionalParty (+logisticServicesBuyer)</b>	
Gln	1234567890128
<b>TransactionalParty (+logisticServicesSeller)</b>	
Gln	9876543212344
<b>TransactionalParty (+pickUpParty)</b>	
Gln	4567891234533
<b>Contact</b>	
personName	Mr Sven Ole Pedersen
departmentName	Log547
<b>CommunicationChannel</b>	
communicationChannelCode	TELEPHONE
communicationValue	+3227887827
<b>CommunicationChannel</b>	
communicationChannelCode	TELEPHONE
communicationValue	+32496123923
<b>CommunicationChannel</b>	
communicationChannelCode	TELEFAX
communicationValue	+3227887899
<b>CommunicationChannel</b>	
communicationChannelCode	EMAIL
communicationValue	svenole.pedersen@a.com
<b>TransactionalParty (+dropOffParty)</b>	
Gln	22754321901233
<b>Contact</b>	
personName	Herr. Uwe Haas
departmentName	LOG
<b>CommunicationChannel</b>	
communicationChannelCode	TELEPHONE
communicationValue	+3237887827
<b>LogisticEvent (+plannedPickUp)</b>	
<b>DateTimeRange (+logisticEventPeriod)</b>	
beginDate	2011-02-17
beginTime	17:00:00
endTime	18:00:00
<b>LogisticEvent (+plannedDropOff)</b>	
<b>DateOptionalTime (+logisticEventDateTime)</b>	
Date	2011-02-21
<b>DeliveryTerms</b>	
incotermsCode	DDP
<b>TransportCapacityBookingSpaceRequirements</b>	

Attribute	Value
<b><i>TransportCargoCharacteristics</i></b>	
cargoTypeDescription	Mobile Phones and Accessories
totalGrossWeight	4500 KGM
totalGrossVolume	40 CBM

## 5.2 Example 2

Booking from Company B to Company D ferry for second leg (Gothenburg-Kiel).

### Message Example 2

Attribute	Value
<b>TransportCapacityBooking</b>	
creationDateTime	2011-02-12T12:00:00
documentStatusCode	ORIGINAL
documentActionCode	ADD
transportServiceCategoryCode	10
transportServiceConditionTypeCode	36
<b><i>EntityIdentification (+transportCapacityBookingIdentification)</i></b>	
entityIdentification	BOOK1236
<b><i>TransactionalParty (+logisticServicesBuyer)</i></b>	
Gln	9876543212344
<b><i>TransactionalParty (+logisticServicesSeller)</i></b>	
Gln	1234567892316
<b><i>LogisticEvent (+plannedPickUp)</i></b>	
<b><i>DateTimeRange (+logisticEventDateTime)</i></b>	
Date	2011-02-18
Time	15:00:00
<b><i>LogisticEvent (+plannedDropOff)</i></b>	
<b><i>DateOptionalTime (+logisticEventDateTime)</i></b>	
Date	2011-02-19
Time	06:00:00
<b><i>DeliveryTerms</i></b>	
incotermsCode	DDP
<b><i>TransportCapacityBookingTransportMovement</i></b>	
transportModeCode	10
routeID	GOTKIE-17
<b><i>LogisticEvent (+plannedDeparture)</i></b>	
<b><i>DateOptionalTime (+logisticEventDateTime)</i></b>	
Date	2011-02-18
Time	17:00:00

Attribute	Value
<b>LogisticEvent (+plannedArrival)</b>	
<b>DateOptionalTime (+logisticEventDateTime)</b>	
Date	2011-02-19
Time	04:00:00
<b>TransportCapacityBookingSpaceRequirements</b>	
<b>TransportCargoCharacteristics</b>	
cargoTypeCode	4
cargoTypeDescription	Mobile Phones and Accessories
totalGrossWeight	4500 KGM
totalGrossVolume	40 CBM

### 5.3 Example 3

This is an example of a response to the booking from Company B to Company D ferry for second leg (Gothenburg-Kiel).

#### Message Example 3

Attribute	Value
<b>TransportCapacityBookingResponse</b>	
creationDateTime	2011-02-12T12:01:00
documentStatusCode	ORIGINAL
documentActionCode	ADD
transportCapacityBookingStatusCode	ACCEPTED
<b>EntityIdentification (+transportCapacityBookingResponseIdentification)</b>	
entityIdentification	BOOKRESP1236
<b>DocumentReference (+transportCapacityBooking)</b>	
entityIdentification	BOOK1236
<b>TransactionalParty (+logisticServicesBuyer)</b>	
gln	9876543212344
<b>TransactionalParty (+logisticServicesSeller)</b>	
gln	1234567892316

## 6 Implementation Considerations

### 6.1 User Guide

The Functional User Guide contains more information about the structure and content of the Transport Capacity Booking and Response message:

[http://www.gs1.org/docs/ecom/xml/3/3.4/eCom-Trade\\_messages.html#TransportCapacityBookingandResponse](http://www.gs1.org/docs/ecom/xml/3/3.4/eCom-Trade_messages.html#TransportCapacityBookingandResponse)

## 6.2 Message Specific Considerations

Not applicable

## 7 Summary of Changes

Any change in the GS1 standards is done based on the Work Request (WR) submitted by the GS1 User Companies or Member Organisations. All Work Requests are documented in the Work Request system available on the GS1 website: <http://wr.gs1.org>. The system is accessible to registered users. New visitors need to register first, to be able to access it. WRs can be searched by the number referenced in tables below, see: Search Work Requests. The number starts with the two last digits of the year when it was submitted, followed by the consecutive number within that year.



**Note:** WRs submitted earlier than February 2012 should be searched in Old Change Requests.

### 7.1 BMS Release 3.0

Change	Associated CR Number
<ul style="list-style-type: none"> <li>In class diagram and GDD report for Transport Capacity Booking Response: Changed role name transportCapacityBookingConfirmationIdentification into transportCapacityBookingResponseIdentification</li> <li>Corrected sample data in paragraphs 6.1 (wrong GLN format) and 6.3 (missing reference).</li> </ul>	

### 7.2 BMS Release 3.1

No work requests. Indirect changes due to upgrade to new Shared and eCom Common libraries.

### 7.3 BMS Release 3.2

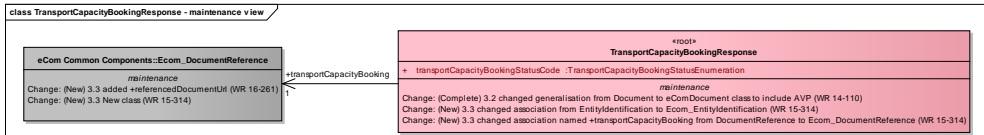
Change	Associated WR
<div>Added Attribute Value Pair at the root, line item and sub line item levels</div> <div><div>class TransportCapacityBooking - maintenance view</div><div><div>«root» TransportCapacityBooking</div><div><div>+ transportServiceCategoryCode :TransportServiceCategoryCode</div><div>+ transportServiceConditionTypeCode :TransportServiceConditionTypeCode [0..1]</div><div>+ transportServiceLevelCode :TransportServiceLevelCode [0..1]</div></div><div><div><i>maintenance</i></div><div>Change: (Verified) 3.2 changed generalisation from Document to eComDocument class to include AVP (WR 14-110)</div></div></div></div>	14-000110

Change	Associated WR
<p>Added Attribute Value Pair at the root, line item and sub line item levels</p> <pre> class TransportCapacityBookingResponse - maintenance view     «root»     TransportCapacityBookingResponse     + transportCapacityBookingStatusCode :TransportCapacityBookingStatusEnumeration     maintenance     Change: (Verified) 3.2 changed generalisation from Document to eComDocument class to include AVP (WR 14-110)         </pre>	<b>14-000110</b>

## 7.4 BMS Release 3.3

Change	Associated WR
<p>Created Ecom_EntityIdentification class and changed association from the previous EntityIdentification</p> <pre> class TransportCapacityBooking - maintenance view     «root»     TransportCapacityBooking     + transportServiceCategoryCode :TransportServiceCategoryCode     + transportServiceConditionTypeCode :TransportServiceConditionTypeCode [0..1]     + transportServiceLevelCode :TransportServiceLevelCode [0..1]     maintenance     Change: (Complete) 3.2 changed generalisation from Document to eComDocument class to include AVP (WR 14-110)     Change: (New) 3.3 changed association from EntityIdentification to Ecom_EntityIdentification (WR 15-314)         </pre> <pre> class eCom GS1 Identification:: Ecom_EntityIdentification - maintenance view     «root»     Ecom_EntityIdentification     maintenance     Change: (New) 3.3 New class (WR 15-314)         </pre> <p>+transportCapacityBookingIdentification 1..1</p>	<b>15-000314</b> Make GS1 identification keys optional in GS1 EDI XML
<p>Created Ecom_EntityIdentification class and changed association from the previous EntityIdentification</p> <pre> class TransportCapacityBookingResponse - maintenance view     «root»     TransportCapacityBookingResponse     + transportCapacityBookingStatusCode :TransportCapacityBookingStatusEnumeration     maintenance     Change: (Complete) 3.2 changed generalisation from Document to eComDocument class to include AVP (WR 14-110)     Change: (New) 3.3 changed association from EntityIdentification to Ecom_EntityIdentification (WR 15-314)     Change: (New) 3.3 changed association named +transportCapacityBooking from DocumentReference to Ecom_DocumentReference (WR 15-314)         </pre> <pre> class eCom GS1 Identification:: Ecom_EntityIdentification - maintenance view     «root»     Ecom_EntityIdentification     maintenance     Change: (New) 3.3 New class (WR 15-314)         </pre> <p>+transportCapacityBookingResponseIdentification 1..1</p>	<b>15-000314</b> Make GS1 identification keys optional in GS1 EDI XML



Change	Associated WR
<p>Created Ecom_DocumentReference class and changed association from the previous DocumentReference</p> 	<p><b>15-000314</b></p> <p>Make GS1 identification keys optional in GS1 EDI XML</p>

## 7.5 BMS Release 3.4

No work requests. Indirect changes due to upgrade to new Shared and eCom Common libraries.

## 8 Appendices

Not Applicable

## 9 Acknowledgements

### 9.1.1 Work Group

Function	Name	Company / organisation
Co-chair	Rossner (Pottier), Natascha	GS1 France
Co-chair	Schmidt, Tom Eric	August Storck KG
Member	Bemrose, Jonathan	R&R Ice Cream
Member	Bodemer, Petra	dm-drogerie markt GmbH + Co. KG
Member	Boikanyo, Rebone	GS1 South Africa / Consumer Goods Council of South Africa
Member	Canada, ON	M3B 3L1
Member	Carlson, Jim	General Mills, Inc.
Member	Chresta, Richard	GS1 Switzerland
Member	Cook, Don	Wal-Mart Stores, Inc.
Member	Cox, Marc	Philips Electronics N.V.
Member	Darnell, David	Systrends
Member	De Flou, Nele	GS1 Belgium & Luxembourg
Member	Dicks, Arne	GS1 Germany
Member	Duvinger, Karina	GS1 Sweden
Member	Foerderer, Klaus	GS1 Germany
Member	Gathmann, Stefan	GS1 Ireland
Member	Grangard, Anders	GS1 Global Office
Member	Harpell, Eileen	GS1 Community Room Staff
Member	Hand, Phil	JDA Software
Member	Herregodts, Kurt	GS1 Belgium & Luxembourg
Member	Kempkes, Fred	Unilever N.V.

Function	Name	Company / organisation
Member	Kernan, Brendan	GS1 Ireland
Member	Kidd, Robin	Nestle
Member	Krid, Anne-Claire	GS1 France
Member	Lanoue, Tom	General Mills, Inc.
Member	Laur, Rita	GS1 Canada
Member	Lenman, Mia	GS1 Sweden
Member	Lerch, Hanjoerg	METRO Group
Member	Moberg, Dale	Axway
Member	Montes de Oca, Alejandra	GS1 Mexico
Member	Ng, Ella	GS1 Australia
Member	Peelen, Esther	GS1 Netherlands
Member	Pelekies, Andreas	GS1 Germany
Member	Perrier, Patricia	GS1 France
Member	Przybilla, Christian	GS1 Germany
Member	Pujol, Xavier	GS1 Spain
Member	Racek, Greg	Wal-Mart Stores, Inc.
Member	Repetto, Mirko	GS1 Italy
Member	Robba, Steven	1WorldSync Holdings, Inc.
Member	Rosell, Pere	GS1 Spain
Member	Rosenberg, Steven	GS1 US
Member	Schmid, Sue	GS1 Australia
Member	Schneider, Christian	GS1 Switzerland
Member	Sehorz, Eugen	GS1 Austria
Member	Sharma, Vishal	General Mills, Inc.
Member	Shimazaki, Ayako	GS1 Japan
Member	Sion, Emilie	GS1 France
Member	Souza, Nadia	GS1 Brasil
Member	Strand, Roman	GS1 Germany
Member	Tan, Milton	GS1 Malaysia
Member	Tompsett, Simon	Waitrose
Member	Trelle, Ute	1WorldSync Holdings, Inc.
Member	Tse, Steve	GS1 Hong Kong
Member	Tyson, Betty	Knouse Foods Cooperative, Inc
Member	Van den Bergh, Senne	GS1 Belgium & Luxembourg
Member	Van der Eijk, Pim	OASIS - Sonnenglanz Consulting BV
Member	Veldhuis, Saskia	Procter & Gamble Co.
Member	Welch, Shan	GS1 UK
Member	Westerkamp, Jan	GS1 Netherlands
Member	Wilson, Mary	GS1 US
Member	Windsperger, Bekki	Best Buy Co., Inc.



Function	Name	Company / organisation
Member	Yang, Shaopeng	GS1 China
Member	Yusdiar, Dani	GS1 Indonesia
Member	Zwanziger, Greg	SUPERVALU

### 9.1.2 Development Team Members

Function	Name	Organisation
GSMP Process Lead	Jean-Luc Champion and Tasha Wiehe	GS1 Global Office
Technical Development Lead	Ewa Iwicka	GS1 Global Office
Peer Review	Mark Van Eeghem	GS1 Global Office