



The Global Language of Business

Despatch Advice Line Item Extension Fish Traceability Business Message Standard (BMS)

Release 3.3, Ratified, Mar 2017



Document Summary

Document Item	Current Value
Document Name	Despatch Advice Line Item Extension Fish Traceability Business Message Standard (BMS)
Document Date	Mar 2017
Document Version	3.3
Document Issue	1
Document Status	Ratified

Work Request Reference

Date of WR Submission to GSMP:	WR Submitter(s):	Refer to Work Request (WR) Number(s):
11-Jan-2013	GS1 Spain	13-000010
01-Apr-2014	GS1 Spain	14-000049
05-May-2014	GS1 Spain	14-000072
26-Feb-2015	GS1 Spain	15-000037

Business Requirements Document (BRAD) Reference

BRAD Title	BRAD Issue Date	BRAD Version
WR 12-356 Fish Traceability and Data Attributes	25-Jul-2013	1.0

Document Change History

Date of Change	Version	Changed By	Reason for Change	Summary of Change
18-Dec-2013	Draft 1	Mark Van Eeghem	Initial Document Creation	Initial Document Creation
10-Jul-2014	Draft 2	Ewa Iwicka	Document updated following peer review	Message converted into Despatch Line Item Extension, local code list updated
15-Oct-2014	BMS 3.2 Issue 1	Ewa Iwicka	Document updated following community review	Removed: productionCountry from FishCatchOrProduction class; date ofCatchProcessTypeCode from FishCatchOrProductionDates; FishCatchOrProductionUnit class – TransactoponalParty associated directly to the root.
01-Mar-2017	BMS 3.3 – Issue 1	Ewa Iwicka	BMS Release 3.3	See summary of changes

Disclaimer

GS1®, under its IP Policy, seeks to avoid uncertainty regarding intellectual property claims by requiring the participants in the Work Group that developed this **Despatch Advice Line Item Extension Fish Traceability Business Message**



Standard (BMS) to agree to grant to GS1 members a royalty-free licence or a RAND licence to Necessary Claims, as that term is defined in the GS1 IP Policy. Furthermore, attention is drawn to the possibility that an implementation of one or more features of this Specification may be the subject of a patent or other intellectual property right that does not involve a Necessary Claim. Any such patent or other intellectual property right is not subject to the licencing obligations of GS1. Moreover, the agreement to grant licences provided under the GS1 IP Policy does not include IP rights and any claims of third parties who were not participants in the Work Group.

Accordingly, GS1 recommends that any organization developing an implementation designed to be in conformance with this Specification should determine whether there are any patents that may encompass a specific implementation that the organisation is developing in compliance with the Specification and whether a licence under a patent or other intellectual property right is needed. Such a determination of a need for licencing should be made in view of the details of the specific system designed by the organisation in consultation with their own patent counsel.

THIS DOCUMENT IS PROVIDED "AS IS" WITH NO WARRANTIES WHATSOEVER, INCLUDING ANY WARRANTY OF MERCHANTABILITY, NONINFRINGEMENT, FITNESS FOR PARTICULAR PURPOSE, OR ANY WARRANTY OTHERWISE ARISING OUT OF THIS SPECIFICATION. GS1 disclaims all liability for any damages arising from use or misuse of this Standard, whether special, indirect, consequential, or compensatory damages, and including liability for infringement of any intellectual property rights, relating to use of information in or reliance upon this document.

GS1 retains the right to make changes to this document at any time, without notice. GS1 makes no warranty for the use of this document and assumes no responsibility for any errors which may appear in the document, nor does it make a commitment to update the information contained herein.

GS1 and the GS1 logo are registered trademarks of GS1 AISBL.

Table of Contents

1	Business Domain View	5
1.1	Introduction	5
1.2	References	5
2	Business Context	5
3	Business Transaction View	5
3.1	Business Transaction View.....	5
4	Business Information View	7
4.1	Fish Despatch Advice Line Item Extension	7
4.2	Enumerations (message specific)	10
4.3	Code Lists	10
5	Business Message Examples	11
5.1	Example.....	11
6	Implementation Considerations.....	12
6.1	User Guide	12
6.2	Message Specific Considerations	12
7	Summary of Changes	13
7.1	BMS Release 3.2	13
7.2	BMS Release 3.3	13
8	Appendices	14
9	Acknowledgements.....	14
9.1	Work Group.....	14
9.2	Development Team Members.....	16

1 Business Domain View

1.1 Introduction

Message Definition / Business need

Fish Traceability Extension is an extension to the Despatch Advice Document used to enable tracking & tracing (traceability) of wild-caught fish and farmed aquaculture products from the point of capture to retail sale.

Principles

Typically, the Despatch Advice serves as a pre-announcement of the goods being shipped. In the context of fish product, additional track and trace data must be provided. The data are exchanged via an extension to the Despatch Advice on line item level.

1.2 References

Reference Name	Description
[Ref1]	WR 12-356 Fish Traceability and Data Attributes
[Ref2]	COUNCIL REGULATION(EC) 1224/2009
[Ref3]	COUNCIL REGULATION(EC) 404/2011
[Ref4]	COMMISSION REGULATION (EC) 2065/2001
[Ref5]	COMMISSION REGULATION (EC) 931/2011

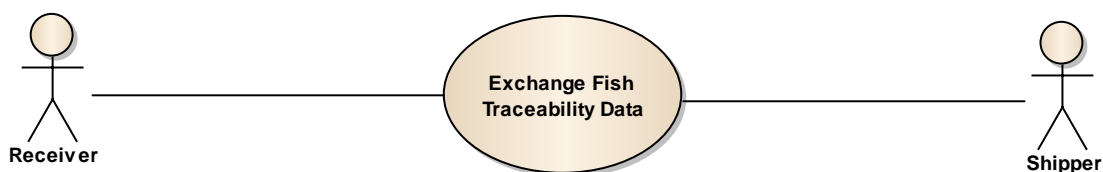
2 Business Context

Context Category	Value(s)
Industry	Fresh Foods
Geopolitical	All
Product	Fresh and frozen fish, including wild caught and aquaculture [farmed] that is sold as a primary product.
Process	Deliver
System Capabilities	GS1 System
Official Constraints	None

3 Business Transaction View

3.1 Business Transaction View

Use case diagram



Use case description

Use Case Name	UC1															
Use Case Description	Exchange of fish traceability history data and fish product despatch information in order to support traceability and quality management.															
Actors (Goal)	Shipper (Fishing Vessel, Aquaculture Farm, Primary Processor, Distributor) Receiver (Secondary Processor, Distributor, Restaurant, Retailer)															
Performance Goals	None															
Preconditions	A trading agreement (including alignment of master data, payment and delivery terms) has been established between Shipper and Receiver. Traceability data for product(s) ordered have been compiled and prepared for exchange by the Shipper. The fish or aquaculture products are uniquely identified.															
Post conditions	Receiver has been supplied with traceability data for fish or aquaculture products which are about to be delivered. Place, time and conditions for delivery have been communicated.															
Main Scenario	Begins when the Shipper secures in his local storage medium the traceability data of fish or aquaculture product(s).															
	Continues with:															
	<table><tr><th>Step #</th><th>Actor</th><th>Activity Step</th></tr><tr><td></td><td>Shipper</td><td>Shipper sends the Receiver traceability data of fish products to be delivered.</td></tr><tr><td></td><td>Receiver</td><td>Receiver receives this traceability data.</td></tr><tr><td></td><td>Receiver</td><td>Receiver cross-checks traceability data with physical delivery.</td></tr><tr><td></td><td>Receiver</td><td>Receiver adds internal information to traceability data, where applicable.</td></tr></table>	Step #	Actor	Activity Step		Shipper	Shipper sends the Receiver traceability data of fish products to be delivered.		Receiver	Receiver receives this traceability data.		Receiver	Receiver cross-checks traceability data with physical delivery.		Receiver	Receiver adds internal information to traceability data, where applicable.
	Step #	Actor	Activity Step													
		Shipper	Shipper sends the Receiver traceability data of fish products to be delivered.													
		Receiver	Receiver receives this traceability data.													
		Receiver	Receiver cross-checks traceability data with physical delivery.													
	Receiver	Receiver adds internal information to traceability data, where applicable.														
Ends when the Receiver secures the traceability data in his local storage medium.																
Alternative Scenario(s)	Not Applicable															
Related Rules	None															

Activity diagram

Not Applicable

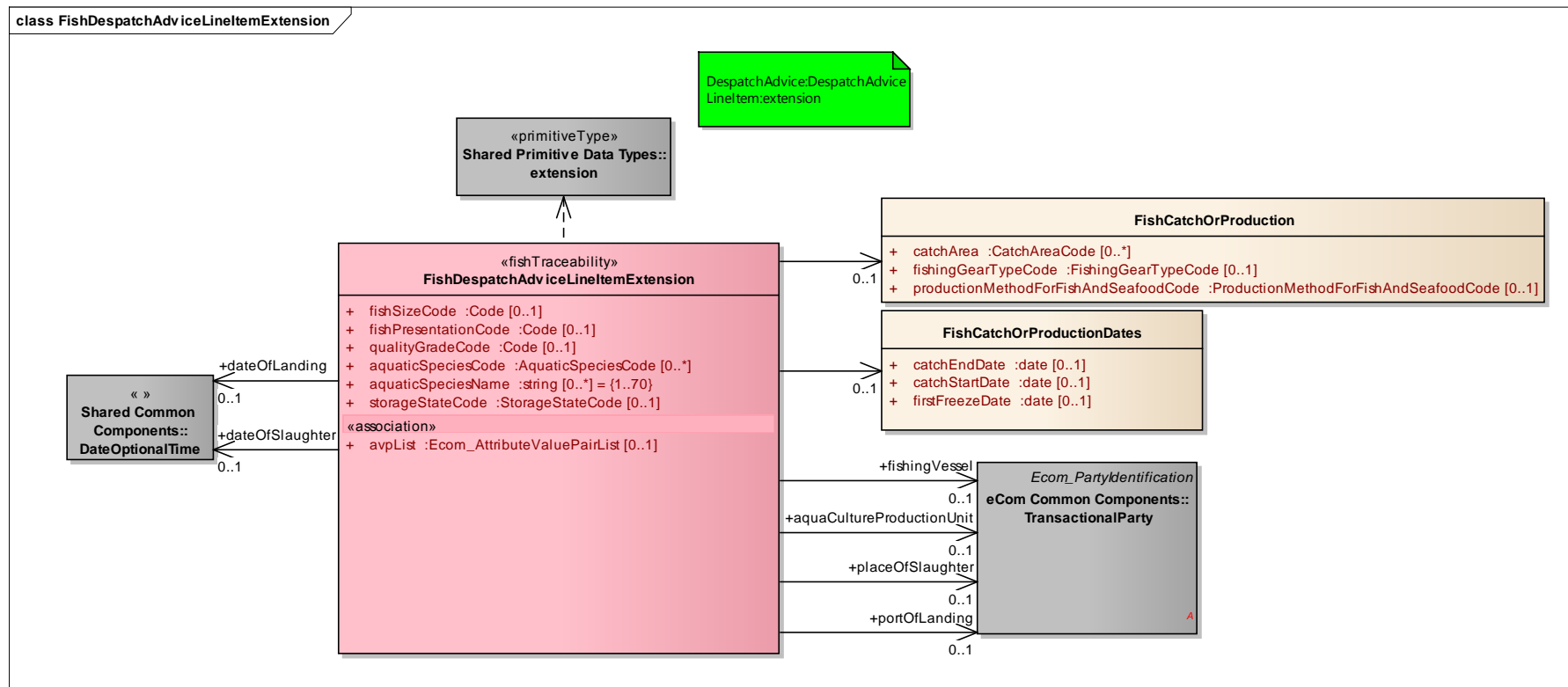
Communication diagram

Not Applicable

4 Business Information View

4.1 Fish Despatch Advice Line Item Extension

Class diagram



GDD report

The content of the FishDespatchAdviceLineItemExtension class, its structure and component definitions can be accessed in the Global Data Dictionary: http://apps.gs1.org/GDD/bms/Version3_3/Pages/bieDetails.aspx?semanticURN=urn:gs1:gdd:bie:FishDespatchAdviceLineItemExtension

Content	Attribute / Role	Datatype / Secondaryclass	Multiplicity	Definition	Requirements
FishDespatchAdviceLineItemExtension				An extension to the Despatch Advice Document used to enable tracking & tracing (traceability) of fish and aquaculture products.	WR 13-000010
Dependency		extension			
Attribute	fishSizeCode	Code	0..1	A code specifying the size of the fish.	WR 13-000010
Attribute	fishPresentationCode	Code	0..1	A code specifying the way the fish is presented for sale.	WR 13-000010
Attribute	qualityGradeCode	Code	0..1	A code specifying the grade of quality of the fish product.	WR 13-000010
Attribute	aquaticSpeciesCode	AquaticSpeciesCode	0..*	A code specifying the scientific name of the fish species.	WR 13-000010
Attribute	aquaticSpeciesName	string	0..*	A scientific name of the fish species.	WR 13-000010
Attribute	storageStateCode	StorageStateCode	0..1	A code specifying whether the fish had been initially frozen or not.	WR 13-000010
Attribute	avpList	Ecom_AttributeValuePairList	0..1	The placeholder for non-standard data.	WR 13-000010
Association		FishCatchOrProduction	0..1	Information about the catch location and catch method used.	WR 13-000010
Attribute	catchArea	CatchAreaCode	0..*	A code specifying area where the product was caught.	WR 13-000010
Attribute	fishingGearTypeCode	FishingGearTypeCode	0..1	A code specifying the type of gear used in capture of fisheries.	WR 14-000049

Content	Attribute / Role	Datatype / Secondaryclass	Multiplicity	Definition	Requirements
Attribute	productionMethodForFishAndSeafoodCode	ProductionMethodForFishAndSeafoodCode	0..1	A code specifying how the fish had been grown / cultivated.	WR 13-000010
Association		FishCatchOrProductionDates	0..1	Date or period of time when the fish had been caught and / or initially frozen.	WR 13-000010
Attribute	catchDateTime	DateOptionalTime	0..1	The date when the fish has been caught.	WR 13-000010
Attribute	catchEndDate	date	0..1	The date when the catching of the fish ended.	WR 13-000010
Attribute	catchStartDate	date	0..1	The date when the catching of the fish begun.	WR 13-000010
Attribute	firstFreezeDate	date	0..1	The date of initial freezing, if different from the date of production.	WR 14-000072
Association	aquaCultureProductionUnit	TransactionalParty	0..1	Identification of the aquaculture production unit.	WR 13-000010
Association	fishingVessel	TransactionalParty	0..1	Identification of the fishing vessel.	WR 13-000010
Association	placeOfSlaughter	TransactionalParty	0..1	Place of slaughter of the aqua culture products.	WR 15-000037
Association	portOfLanding	TransactionalParty	0..1	Port of landing of the fishing vessel.	WR 15-000037
Association	dateOfLanding	DateOptionalTime	0..1	Date when the fishing vessel has landed in the port of landing.	WR 15-000037
Association	dateOfSlaughter	DateOptionalTime	0..1	Date when the aqua culture product has been slaughtered.	WR 15-000037







Note: Reference Shared Common Library Business Message (BMS) Release 3.3 and eCom Domain Common Library Business Message (BMS) Release 3.3 for all common information.

4.2 Enumerations (message specific)

Not applicable

4.3 Code Lists

Class	Codelist	Referenced in
FishCatchOrProduct ion	CatchAreaCode	http://apps.gs1.org/GDD/Pages/clDetails.aspx?semanticURN=urn:gs1:gdd:cl:CatchAreaCode  Note: This is a code list developed and managed by FAO, fully adopted by GS1. The code list values can be accessed here: http://www.fao.org/fishery/area/search/en
FishCatchOrProduct ion	CountryCode	http://apps.gs1.org/GDD/Pages/clDetails.aspx?semanticURN=urn:gs1:gdd:cl:CountryCode  Note: GS1 uses the ISO 3166-1 Code List to populate Country Code. The use of either the alpha-2 codes (e.g. FR) or the ISO 3166-1 numeric (e.g. 250) is determined by implementation.
FishDespatchAdvice LineItemExtension	aquaticSpeciesC ode	http://apps.gs1.org/GDD/Pages/clDetails.aspx?semanticURN=urn:gs1:gdd:cl:AquaticSpeciesCode  Note: This is a code list developed and managed by FAO, fully adopted by GS1. The code list values can be accessed here: ftp://ftp.fao.org/FI/STAT/DATA/ASFIS_sp.zip
FishDespatchAdvice LineItemExtension	StorageStateCod e	http://apps.gs1.org/GDD/Pages/clDetails.aspx?semanticURN=urn:gs1:gdd:cl:StorageStateCode
FishCatchOrProduct ion	ProductionMetho dForFishAndSeaF oodCode	http://apps.gs1.org/GDD/Pages/clDetails.aspx?semanticURN=urn:gs1:gdd:cl:ProductionMethodForFishAndSeaFoodCode
FishCatchOrProduct ion	FishingGearType Code	http://apps.gs1.org/GDD/Pages/clDetails.aspx?semanticURN=urn:gs1:gdd:cl:FishingGearTypeCode  Note: This is a code list developed and managed by FAO, fully adopted by GS1. The code list values can be accessed here: ftp://ftp.fao.org/FI/DOCUMENT/cwp/handbook/annex/AnnexM1_fishinggear.pdf



Note: Refer to the Global Data Dictionary (GDD) for the code values.



5 Business Message Examples

5.1 Example

This is an example of a Fish Traceability Line Item Extension to the Despatch Advice message. The message is sent on August 20th 2014 at 10.00 AM by the Shipper (GLN 4098765000010) to the Receiver (GLN 5412345000013). The message identification number is DA349855.

Party Information

GS1 Global Location Number	Party Type
5412345000013	Receiver
4098765000010	Shipper
5412345000037	Ship to
0123654789630	Shipping Vessel

The Fish Traceability extension announces the despatch of Atlantic cod (species code value COD), caught on August 13th 2014 near Cape Hatteras, denoted as Catch Area Code 21.6. The fish was caught by the vessel named Northern Star (GLN 0123654789630). Fish was initially frozen on August 13th 2014.

Message Example

Attribute	Value
DespatchAdvice	
Document	
creationDateTime	2014-08-20 10:00
documentStatus	ORIGINAL
EntityIdentification (+despatchAdviceIdentification)	
entityIdentification	DA349855
PartyIdentification (+contentOwner)	
gln	4098765000010
TransactionalParty (+shipper)	
gln	4098765000010
TransactionalParty (+receiver)	
gln	5412345000013
TransactionalParty (+shipTo)	
gln	5412345000037
DespatchInformation	
actualShipDateTime	2014-08-20 11:00
DespatchAdviceLogisticUnit	
DespatchAdviceLineItem	
lineItemNumber	1
despatchedQuantity	700
FishDespatchAdviceLineItemExtension	
Code (+fishSizeCode)	3
codeListAgencyName	European Communities

Attribute	Value
codeListName	EuropeanFishSizeCode
Code (+fishPresentationCode)	FIL
codeListAgencyName	European Communities
codeListVersion	1.2
codeListName	EuropeanFishPresentationCode
Code (+qualityGradeCode)	A
codeListAgencyName	European Communities
codeListName	EuropeanQualityGradeCode
aquaticSpeciesCode	COD
codeListVersion	2014
aquaticSpeciesName	Gadus morhua
storageStateCode	PREVIOUSLY_FROZEN
FishCatchOrProduction	
CatchAreaCode (+catchArea)	21.6
FishingGearTypeCode (+fishingGearTypeCode)	SV
CountryCode (+productioncountry)	US
ProductionMethodForFishAndSeafoodCode (productionMethodForFishAndSeafoodCode)	MARINE_FISHERY
FishCatchOrProductionDates	
Date (+catchDateTime)	2014-08-13
DateOfCatchProcessTypeCode (+dateOfCatchProcessTypeCode)	REAL_TIME
Date (+firstFreezeDate)	2014-08-13
PartyIdentification (+fishingVessel)	
gln	0123654789630
name	Northern Star
TransactionalTradeItemIdentification (+requestedItemIdentification)	
gtin	40987650000346

6 Implementation Considerations

6.1 User Guide

The Functional User Guide Order contains more information about the structure and content of the Despatch Advice Line Item Fish Traceability Extension:

http://www.gs1.org/docs/ecom/xml/3/3.3/eCom-Trade_messages.html#FishExtension

6.2 Message Specific Considerations

A number of attributes in the Fish Traceability Extension are defined as the Code data type. This type allows for use of bilaterally defined code lists, which should be mutually agreed between trading partners, GS1 does not specify the code list to be used. The Code type is used when there are multiple code lists that could be implemented depending e.g. on the industry or geopolitical region.

For products intended for the European market the following code lists should be used:

- For attribute **fishSizeCode**: EU Fish Size Code - Official Journal of the European Communities No. L 334/1 dated 23 Dec 96
- For attribute **qualityGradeCode**: EuropeanQualityGradeCode EU Fish Freshness Code: COUNCIL REGULATION (EC) No 2406/96 of 26 November 1996 laying down common marketing standards for certain fishery products <http://eur-lex.europa.eu/legal-content/EN/TXT/PDF/?uri=CELEX:31996R2406&from=EN>
- For attribute **fishPresentationCode**: EuropeanFishPresentationCode <http://ec.europa.eu/fisheries/cfp/control/codes/code-fishpresentation.xls v1.2>

The Code data type contains a number of optional attributes. At least the following attributes should be used for the three above mentioned European code lists:

- codeListAgencyName
- codeListName

7 Summary of Changes

Any change in the GS1 standards is done based on the Work Request (WR) submitted by the GS1 User Companies or Member Organisations. All Work Requests are documented in the Work Request system available on the GS1 website: <http://wr.gs1.org>. The system is accessible to registered users. New visitors need to register first, to be able to access it. WRs can be searched by the number referenced in tables below, see: Search Work Requests. The number starts with the two last digits of the year when it was submitted, followed by the consecutive number within that year.

Note: WRs submitted earlier than February 2012 should be searched in Old Change Requests.

7.1 BMS Release 3.2

Change	Associated WR
Initial Document Creation	13-000010 14-000049 14-000072

7.2 BMS Release 3.3

Change	Associated WR
<p>Added associations to TransactionalParty named +placeOfSlaughter and +portOfLanding</p>	15-000037

Change	Associated WR
<p>Added associations to DateOptionalTime named +dateOfLanding and + dateOfSlaughter</p> <pre> class FishDespatchAdviceLineItemExtension - maintenance view «fishTraceability» FishDespatchAdviceLineItemExtension + fishSizeCode :Code [0..1] + fishPresentationCode :Code [0..1] + qualityGradeCode :Code [0..1] + aquaticSpeciesCode :AquaticSpeciesCode [0..1] + aquaticSpeciesName :string [0..1] = {1..70} + storageStateCode :StorageStateCode [0..1] «association» + avpList :Ecom_AttributeValuePairList [0..1] maintenance Change: (Complete) 3.2 added +avpList (WR 14-110) Change: (Complete) 3.2 new class (WR12-356) Change: (New) 3.3 added association to DateOptionaltime class with role name +dateOfLanding (WR 15-037) Change: (New) 3.3 added association to DateOptionaltime class with role name +dateOfSlaughter (WR 15-037) Change: (New) 3.3 added association to TransactionalParty class with role name +placeOfSlaughter (WR 15-037) Change: (New) 3.3 added association to TransactionalParty class with role name +portOfLanding (WR 15-037) </pre>	15-000037

8 Appendices

Not Applicable

9 Acknowledgements

9.1 Work Group

Function	Name	Company / organisation
Co-chair	Rossner (Pottier), Natascha	GS1 France
Co-chair	Schmidt, Tom Eric	August Storck KG
Member	Bemrose, Jonathan	R&R Ice Cream
Member	Bodemer, Petra	dm-drogerie markt GmbH + Co. KG
Member	Boikanyo, Rebone	GS1 South Africa / Consumer Goods Council of South Africa
Member	Canada, ON	M3B 3L1
Member	Carlson, Jim	General Mills, Inc.
Member	Chresta, Richard	GS1 Switzerland
Member	Cook, Don	Wal-Mart Stores, Inc.
Member	Cox, Marc	Philips Electronics N.V.
Member	Darnell, David	Systrends
Member	De Flou, Nele	GS1 Belgium & Luxembourg
Member	Dicks, Arne	GS1 Germany
Member	Duvinger, Karina	GS1 Sweden
Member	Foerderer, Klaus	GS1 Germany
Member	Gathmann, Stefan	GS1 Ireland
Member	Grangard, Anders	GS1 Global Office



Function	Name	Company / organisation
Member	Harpell, Eileen	GS1 Community Room Staff
Member	Hand, Phil	JDA Software
Member	Herregodts, Kurt	GS1 Belgium & Luxembourg
Member	Kempkes, Fred	Unilever N.V.
Member	Kernan, Brendan	GS1 Ireland
Member	Kidd, Robin	Nestle
Member	Krid, Anne-Claire	GS1 France
Member	Lanoue, Tom	General Mills, Inc.
Member	Laur, Rita	GS1 Canada
Member	Lenman, Mia	GS1 Sweden
Member	Lerch, Hanjoerg	METRO Group
Member	Moberg, Dale	Axway
Member	Montes de Oca, Alejandra	GS1 Mexico
Member	Ng, Ella	GS1 Australia
Member	Peelen, Esther	GS1 Netherlands
Member	Pelekies, Andreas	GS1 Germany
Member	Perrier, Patricia	GS1 France
Member	Przybilla, Christian	GS1 Germany
Member	Pujol, Xavier	GS1 Spain
Member	Racek, Greg	Wal-Mart Stores, Inc.
Member	Repetto, Mirko	GS1 Italy
Member	Robba, Steven	1WorldSync Holdings, Inc.
Member	Rosell, Pere	GS1 Spain
Member	Rosenberg, Steven	GS1 US
Member	Schmid, Sue	GS1 Australia
Member	Schneider, Christian	GS1 Switzerland
Member	Sehorz, Eugen	GS1 Austria
Member	Sharma, Vishal	General Mills, Inc.
Member	Shimazaki, Ayako	GS1 Japan
Member	Sion, Emilie	GS1 France
Member	Souza, Nadia	GS1 Brasil
Member	Strand, Roman	GS1 Germany
Member	Tan, Milton	GS1 Malaysia
Member	Tompsett, Simon	Waitrose
Member	Trelle, Ute	1WorldSync Holdings, Inc.
Member	Tse, Steve	GS1 Hong Kong
Member	Tyson, Betty	Knouse Foods Cooperative, Inc
Member	Van den Bergh, Senne	GS1 Belgium & Luxembourg
Member	Van der Eijk, Pim	OASIS - Sonnenglanz Consulting BV
Member	Veldhuis, Saskia	Procter & Gamble Co.



Function	Name	Company / organisation
Member	Welch, Shan	GS1 UK
Member	Westerkamp, Jan	GS1 Netherlands
Member	Wilson, Mary	GS1 US
Member	Windsperger, Bekki	Best Buy Co., Inc.
Member	Yang, Shaopeng	GS1 China
Member	Yusdiar, Dani	GS1 Indonesia
Member	Zwanziger, Greg	SUPERVALU

9.2 Development Team Members

Function	Name	Organisation
GSMP Process Lead	Jean-Luc Champion	GS1 Global Office
Technical Development Lead	Ewa Iwicka	GS1 Global Office
Peer Review	Mark Van Eeghem	GS1 Global Office