



The Global Language of Business

# Warehouse Inbound Instruction and Notification Business Message Standard (BMS)

*Release 3.3, Ratified, Mar 2017*



## Document Summary

| Document Item    | Current Value  |
|------------------|--|
| Document Name    | Warehouse Inbound Instruction and Notification Business Message Standard (BMS) |
| Document Date    | Mar 2017   |
| Document Version | 3.3  |
| Document Issue   | 1  |
| Document Status  | Ratified   |

## Work Request Reference

| Date of WR Submission to GSMP: | WR Submitter(s):  | Refer to Work Request (WR) Number(s): |
|--------------------------------|-------------------|---------------------------------------|
| 25-Jun-2014                    | GS1 Global Office | 14-000110                             |

## Business Requirements Document (BRAD) Reference

| BRAD Title                                 | BRAD Issue Date | BRAD Version |
|--|-----------------|--------------|
| Warehousing Inbound and Outbound processes | 25-Jul-2012     | 1.0          |

## Document Change History

| Date of Change | Version           | Changed By      | Reason for Change | Summary of Change      |
|----------------|-------------------|-----------------|-------------------|------------------------|
| 12-Jan-2012    | BMS 3.0 – Issue 1 | Mark Van Eeghem | BMS Release 3.0   | See summary of changes |
| 01-May-2013    | BMS 3.1 – Issue 1 | Coen Janssen    | BMS Release 3.1   | See summary of changes |
| 15-Sep-2014    | BMS 3.2 – Issue 1 | Ewa Iwicka      | BMS Release 3.2   | See summary of changes |
| 01-Mar-2017    | BMS 3.3 – Issue 1 | Ewa Iwicka      | BMS Release 3.3   | See summary of changes |

## Disclaimer

GS1®, under its IP Policy, seeks to avoid uncertainty regarding intellectual property claims by requiring the participants in the Work Group that developed this **Warehouse Inbound Instruction and Notification Business Message Standard (BMS)** to agree to grant to GS1 members a royalty-free licence or a RAND licence to Necessary Claims, as that term is defined in the GS1 IP Policy. Furthermore, attention is drawn to the possibility that an implementation of one or more features of this Specification may be the subject of a patent or other intellectual property right that does not involve a Necessary Claim. Any such patent or other intellectual property right is not subject to the licencing obligations of GS1. Moreover, the agreement to grant licences provided under the GS1 IP Policy does not include IP rights and any claims of third parties who were not participants in the Work Group.

Accordingly, GS1 recommends that any organization developing an implementation designed to be in conformance with this Specification should determine whether there are any patents that may encompass a specific implementation that the organisation is developing in compliance with the Specification and whether a licence under a patent or other intellectual



property right is needed. Such a determination of a need for licencing should be made in view of the details of the specific system designed by the organisation in consultation with their own patent counsel.

THIS DOCUMENT IS PROVIDED "AS IS" WITH NO WARRANTIES WHATSOEVER, INCLUDING ANY WARRANTY OF MERCHANTABILITY, NONINFRINGEMENT, FITNESS FOR PARTICULAR PURPOSE, OR ANY WARRANTY OTHERWISE ARISING OUT OF THIS SPECIFICATION. GS1 disclaims all liability for any damages arising from use or misuse of this Standard, whether special, indirect, consequential, or compensatory damages, and including liability for infringement of any intellectual property rights, relating to use of information in or reliance upon this document.

GS1 retains the right to make changes to this document at any time, without notice. GS1 makes no warranty for the use of this document and assumes no responsibility for any errors which may appear in the document, nor does it make a commitment to update the information contained herein.

GS1 and the GS1 logo are registered trademarks of GS1 AISBL.

# Table of Contents

|          |  |           |
|----------|--|-----------|
| <b>1</b> | <b>Business Domain View .....</b>                      | <b>5</b>  |
| 1.1      | Introduction .....                                     | 5         |
| 1.2      | References .....                                       | 5         |
| <b>2</b> | <b>Business Context .....</b>                          | <b>5</b>  |
| <b>3</b> | <b>Business Transaction View .....</b>                 | <b>6</b>  |
| 3.1      | Business Transaction – Issue Inbound Instruction ..... | 6         |
| 3.2      | Business Transaction – Issue Inbound Notification..... | 7         |
| <b>4</b> | <b>Business Information View .....</b>                 | <b>9</b>  |
| 4.1      | Warehousing Inbound Instruction.....                   | 9         |
| 4.2      | Warehousing Inbound Instruction - Shipment .....       | 11        |
| 4.3      | Warehousing Inbound Instruction – Shipment Item .....  | 13        |
| 4.4      | Warehousing Inbound Notification .....                 | 15        |
| 4.5      | Warehousing Inbound Notification - Shipment .....      | 17        |
| 4.6      | Warehousing Inbound Notification – Shipment Item ..... | 19        |
| 4.7      | Warehousing Inbound Notification – Data types .....    | 20        |
| 4.8      | Enumerations (message specific) .....                  | 22        |
| 4.9      | Code Lists .....                                       | 22        |
| <b>5</b> | <b>Business Message Examples .....</b>                 | <b>23</b> |
| 5.1      | Example 1 .....  | 23        |
| 5.2      | Example 2.....   | 24        |
| <b>6</b> | <b>Implementation Considerations.....</b>              | <b>26</b> |
| 6.1      | User Guide .....                                       | 26        |
| 6.2      | Message Specific Considerations .....                  | 26        |
| <b>7</b> | <b>Summary of Changes .....</b>                        | <b>27</b> |
| 7.1      | BMS Release 3.1 .....                                  | 27        |
| 7.2      | BMS Release 3.2 .....                                  | 27        |
| 7.3      | BMS Release 3.3 .....                                  | 28        |
| <b>8</b> | <b>Appendices .....</b>                                | <b>29</b> |
| <b>9</b> | <b>Acknowledgements.....</b>                           | <b>29</b> |
| 9.1.1    | Work Group .....                                       | 29        |
| 9.1.2    | Development Team Members .....                         | 31        |

# 1 Business Domain View

## 1.1 Introduction

### Message Definition

#### Warehousing Inbound Instruction Message Definition

The Warehousing Inbound Instruction message enables a Logistic Services Client (LSC) to inform his Logistic Services Provider (LSP) that goods will be arriving.

#### Warehousing Inbound Notification Message Definition

The Warehousing Inbound Notification message enables a Logistic Services Provider (LSP) to inform his Logistic Services Client (LSC) on the status of goods received on behalf of the client.

### Principles

These messages support the warehouse inbound process.

## 1.2 References

[LIM] GS1 Logistics Interoperability Model, 1.0, GS1 2007

[BRAD\_WIO] BRAD Warehousing Inbound and Outbound Processes, 1.0, GS1 2012

[BMS\_Shared] BMS Shared Common Library, 3.3, GS1 2016

[BMS\_eCom] BMS eCom Common Library, 3.3, GS1 2016

[BMS\_Warehousing] BMS Warehousing Common Library, 3.3, GS1 2016

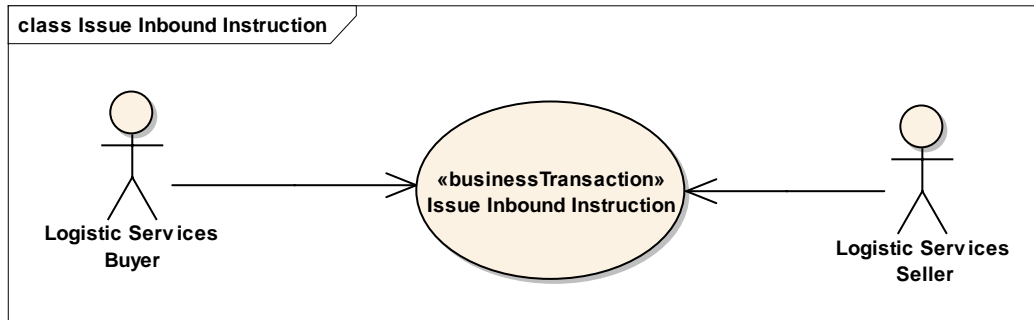
# 2 Business Context

| Context Category     | Value(s)                         |
|----------------------|----------------------------------|
| Industry             | All                              |
| Geopolitical         | All                              |
| Product              | All                              |
| Process              | Warehousing – Inbound Operations |
| System Capabilities  | GS1 System                       |
| Official Constraints | None                             |

### 3 Business Transaction View

#### 3.1 Business Transaction – Issue Inbound Instruction

##### Use case diagram



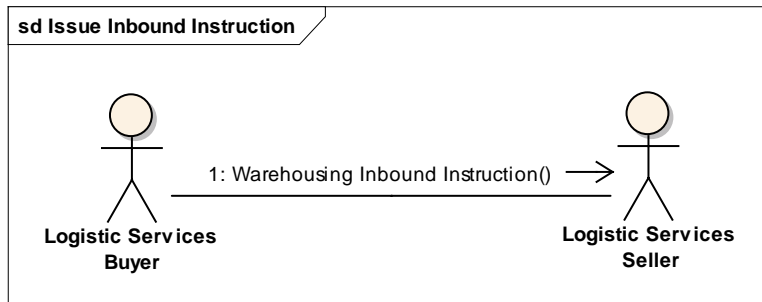
##### Use case description

| Use Case Name           | Issue Warehousing Inbound Instruction  |
|-------------------------|--|
| Use Case Description    | The Logistic Services Buyer (LSB) informs the Logistic Services Seller (LSS) that a shipment will be delivered to the warehouse.   |
| Actors (Goal)           | Logistic Services Buyer (LSB)<br>Logistic Services Seller (LSS)  |
| Performance Goals       | Not applicable   |
| Preconditions           | Item master data of the goods to be received have been communicated to the Logistic Services Seller.   |
| Post conditions         | The Logistic Services Seller has been informed on the goods to be received.  |
| Main Scenario           | <ul style="list-style-type: none"> <li>LSB generates the Warehousing Inbound Instruction from his (enterprise resource planning) system.</li> <li>LSB sends the Warehousing Inbound Instruction to the LSS.</li> <li>LSS receives the Warehousing Inbound Instruction.</li> <li>LSS processes the Warehousing Inbound Instruction in his (warehouse management) system.</li> </ul> |
| Alternative Scenario(s) | Not applicable   |
| Related Requirements    |  |
| Related Rules           |  |

##### Activity diagram

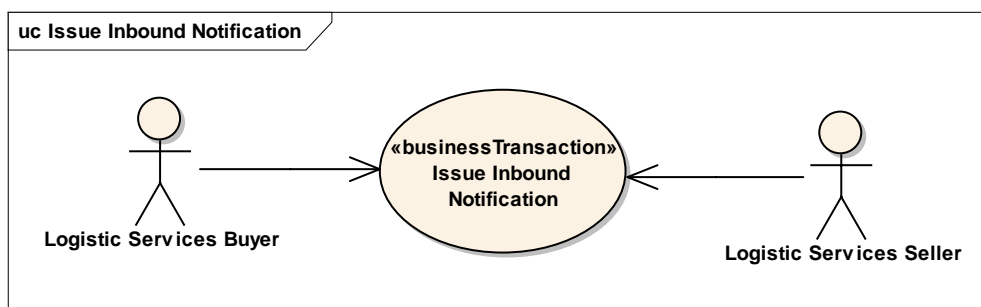
Not applicable

## Communication diagram



## 3.2 Business Transaction – Issue Inbound Notification

### Use case diagram



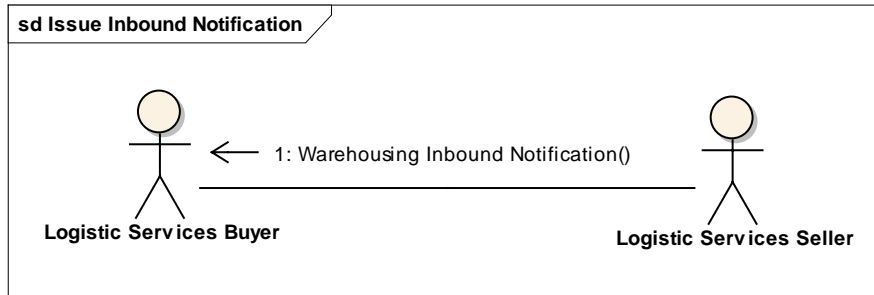
### Use case description

| Use Case Name           | Issue Warehousing Inbound Notification   |
|-------------------------|--|
| Use Case Description    | The Logistic Services Seller (LSS) informs the Logistic Services Buyer (LSB) on the status of a shipment that will be / has been received in the warehouse.  |
| Actors (Goal)           | Logistic Services Buyer (LSB)<br>Logistic Services Seller (LSS)  |
| Performance Goals       | Not applicable   |
| Preconditions           | <ul style="list-style-type: none"> <li>Item master data of the goods to be received have been communicated to the Logistic Services Seller.</li> <li>The Logistic Services Seller has been informed on the goods to be received. Exception to this condition is the situation where 'spontaneous receipts are allowed.</li> </ul>  |
| Post conditions         | The Logistic Services Buyer has been informed on status of the inbound shipment.   |
| Main Scenario           | <ul style="list-style-type: none"> <li>LSS generates the Warehousing Inbound Notification from his (warehouse management) system.</li> <li>LSS sends the Warehousing Inbound Notification to the LSB.</li> <li>LSB receives the Warehousing Inbound Notification.</li> <li>LSB processes the Warehousing Inbound Notification in his (enterprise resource planning) system.</li> </ul> |
| Alternative Scenario(s) | Not applicable   |
| Related Requirements    |  |
| Related Rules           |  |

### Activity diagram

Not applicable

### Communication diagram

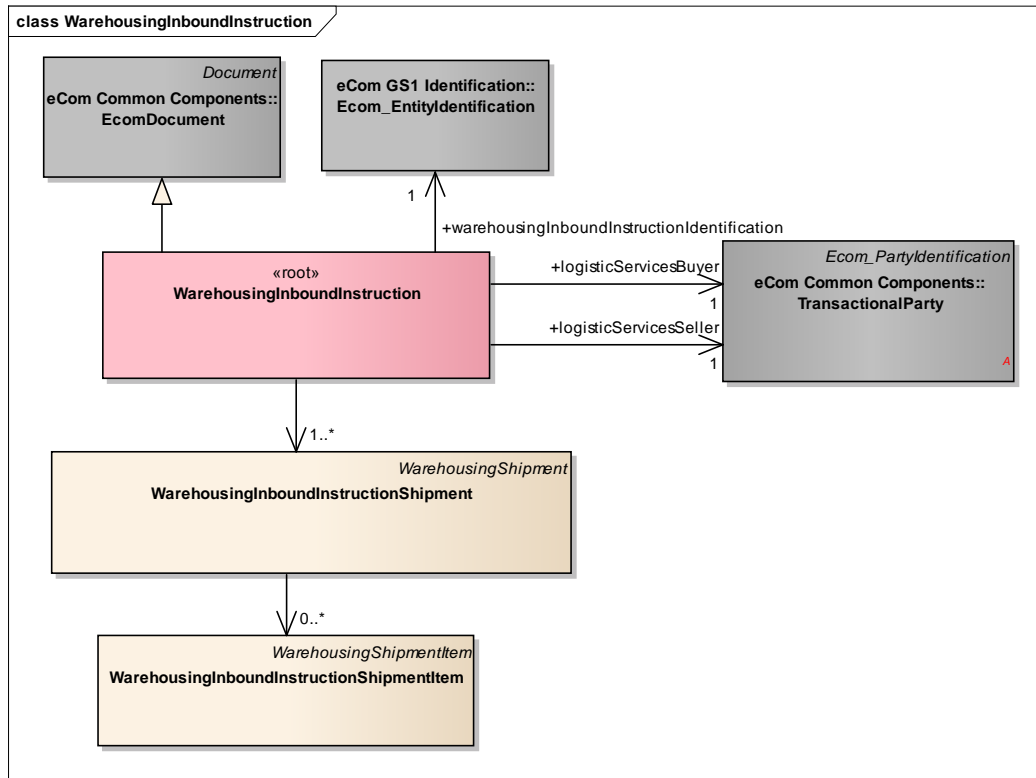




## 4 Business Information View

### 4.1 Warehousing Inbound Instruction

#### Class diagram



## GDD report

The content of the WarehousingInboundInstruction class, its structure and component definitions can be accessed in the Global Data Dictionary:  
[http://apps.gs1.org/GDD/bms/Version3\\_3/Pages/bieDetails.aspx?semanticURN=urn:gs1:gdd:bie:WarehousingInboundInstruction](http://apps.gs1.org/GDD/bms/Version3_3/Pages/bieDetails.aspx?semanticURN=urn:gs1:gdd:bie:WarehousingInboundInstruction)

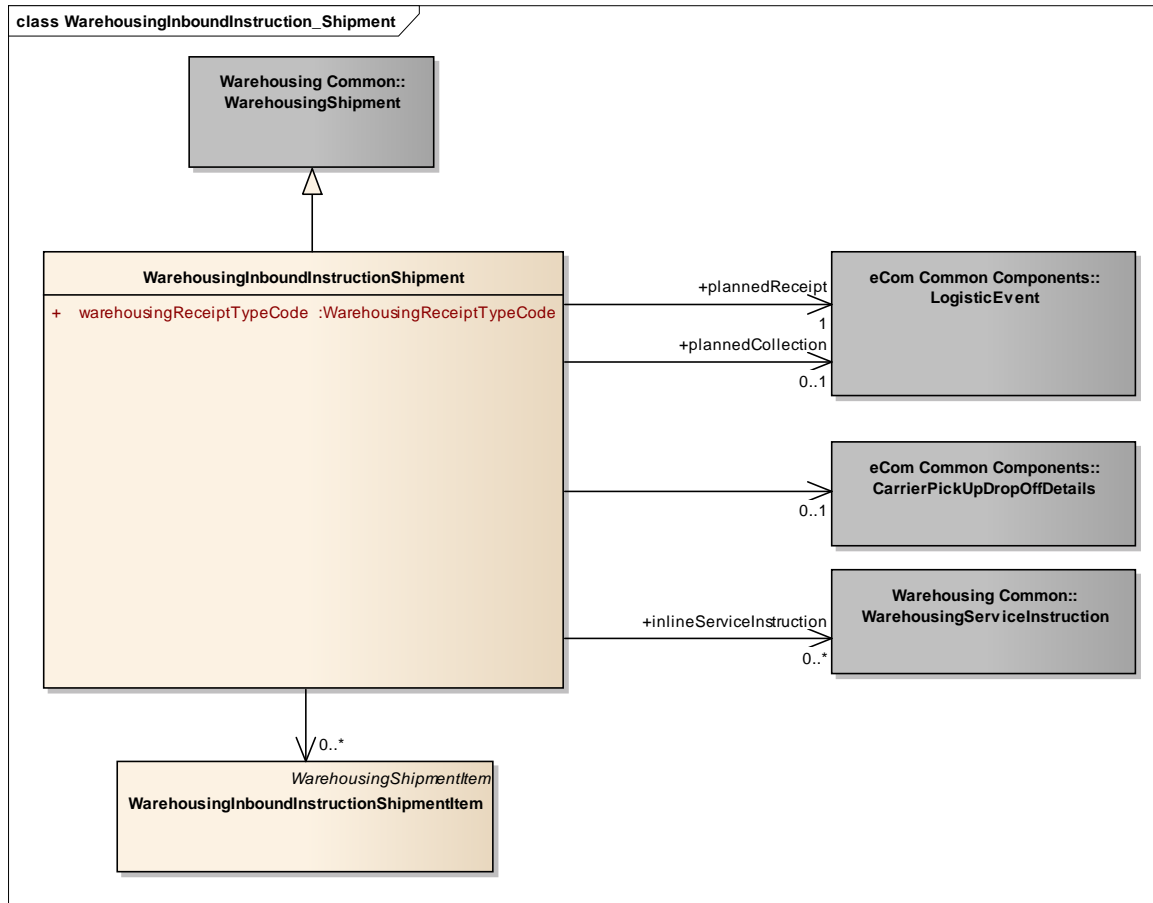
| Content                       | Attribute / Role                            | Datatype /Secondary class             | Multiplicity | Definition  | Requirements |
|-------------------------------|---|---------------------------------------|--------------|---|--------------|
| WarehousingInboundInstruction |   |                                       |              | Message that supports the warehouse inbound process, and enables a Logistic Services Client (LSC) to inform his Logistic Services Provider (LSP) that goods will be arriving. |              |
| Association                   | logisticServicesSeller                      | TransactionalParty                    | 1..1         | A party that provides logistics services to another party.  |              |
| Association                   |   | WarehousingInboundInstructionShipment | 1..*         | Information on the shipments that need to be received by the logistics services seller.   |              |
| Association                   | warehousingInboundInstructionIdentification | Ecom_EntityIdentification             | 1..1         | The identification of the warehousing inbound instruction document.   |              |
| Generalization                |   | EcomDocument                          |              | Basic information about the content of the message including version number, creation date and time.  | WR 14-000110 |
| Association                   | logisticServicesBuyer                       | TransactionalParty                    | 1..1         | A party that purchases logistics services from another party.   |              |



**Note:** Reference Shared Common Library Business Message (BMS) Release 3.3 and eCom Domain Common Library Business Message (BMS) Release 3.3 for all common information.

## 4.2 Warehousing Inbound Instruction - Shipment

### Class Diagram



### GDD Report

The content of the **WarehousingInboundInstructionShipment** class, its structure and component definitions can be accessed in the Global Data Dictionary:

[http://apps.gs1.org/GDD/bms/Version3\\_3/Pages/bieDetails.aspx?semanticURN=urn:gs1:gdd:bie:WarehousingInboundInstructionShipment](http://apps.gs1.org/GDD/bms/Version3_3/Pages/bieDetails.aspx?semanticURN=urn:gs1:gdd:bie:WarehousingInboundInstructionShipment)

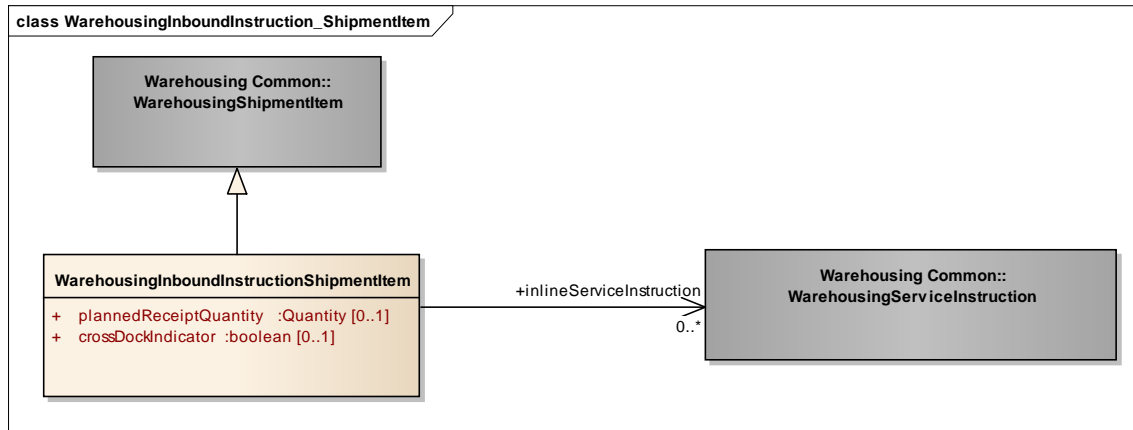
| Content                                      | Attribute / Role           | Datatype /Secondary class                 | Multiplicity | Definition  | Requirements            |
|--|----------------------------|---|--------------|---|-------------------------|
| <b>WarehousingInboundInstructionShipment</b> |                            |   |              | A shipment is an identifiable collection of one or more Trade Items available to be transported together from the shipper (Original Consignor/Shipper), to the receiver (Final/Ultimate Consignee). |                         |
| Association                                  |                            | WarehousingInboundInstructionShipmentItem | 0..*         | Details on the items contained in the shipment.   |                         |
| Association                                  | inlineServiceInstruction   | WarehousingServiceInstruction             | 0..*         | Details on one or more services to be performed by the logistic services seller during inbound processing.  | [brad-whiop:insrec_4.5] |
| Association                                  |                            | CarrierPickUpDropOffDetails               | 0..1         | Details on the carrier that will deliver the goods.   | [brad-wio:insrec_4.4]   |
| Association                                  | plannedCollection          | LogisticEvent                             | 0..1         | The date and time goods need to be collected from a rail terminal, sea port, airport or inland container terminal.This element is not intended to be used for the pick-up at supplier scenario.     | [brad-whiop:insrec_4.2] |
| Association                                  | plannedReceipt             | LogisticEvent                             | 1..1         | Date and time the goods are planned to be delivered.  | [brad-whiop:insrec_4.1] |
| Generalization                               |                            | WarehousingShipment                       |              |   |                         |
| Attribute                                    | warehousingReceiptTypeCode | WarehousingReceiptTypeCode                | 1..1         | Code specifying the type of receipt, in order to inform the receiving party how to process the receipt.   | [brad-whiop:insrec-4.3] |



**Note:** Reference Shared Common Library Business Message (BMS) Release 3.3 and eCom Domain Common Library Business Message (BMS) Release 3.3 for all common information.

## 4.3 Warehousing Inbound Instruction – Shipment Item

### Class Diagram



### GDD Report

The content of the WarehousingInboundInstructionShipmentItem class, its structure and component definitions can be accessed in the Global Data Dictionary:

[http://apps.gs1.org/GDD/bms/Version3\\_3/Pages/bieDetails.aspx?semanticURN=urn:gs1:gdd:bie:WarehousingInboundInstructionShipmentItem](http://apps.gs1.org/GDD/bms/Version3_3/Pages/bieDetails.aspx?semanticURN=urn:gs1:gdd:bie:WarehousingInboundInstructionShipmentItem)

| Content                                   | Attribute / Role         | Datatype /Secondary class     | Multiplicity | Definition  | Requirements            |
|---|--------------------------|-------------------------------|--------------|---|-------------------------|
| WarehousingInboundInstructionShipmentItem |                          |                               |              | A shipment item is collection of trade items and related logistic units that can each be identified (uniquely) within a shipment. |                         |
| Generalization                            |                          | WarehousingShipmentItem       |              |   |                         |
| Association                               | inlineServiceInstruction | WarehousingServiceInstruction | 0..*         | Details on one or more services to be performed by the logistic services seller during inbound processing.                        | [brad-whiop:insrec_5.2] |
| Attribute                                 | plannedReceiptQuantity   | Quantity                      | 0..1         | The quantity that is ordered / planned to be received.  | [brad-whiop:insrec_5.1] |



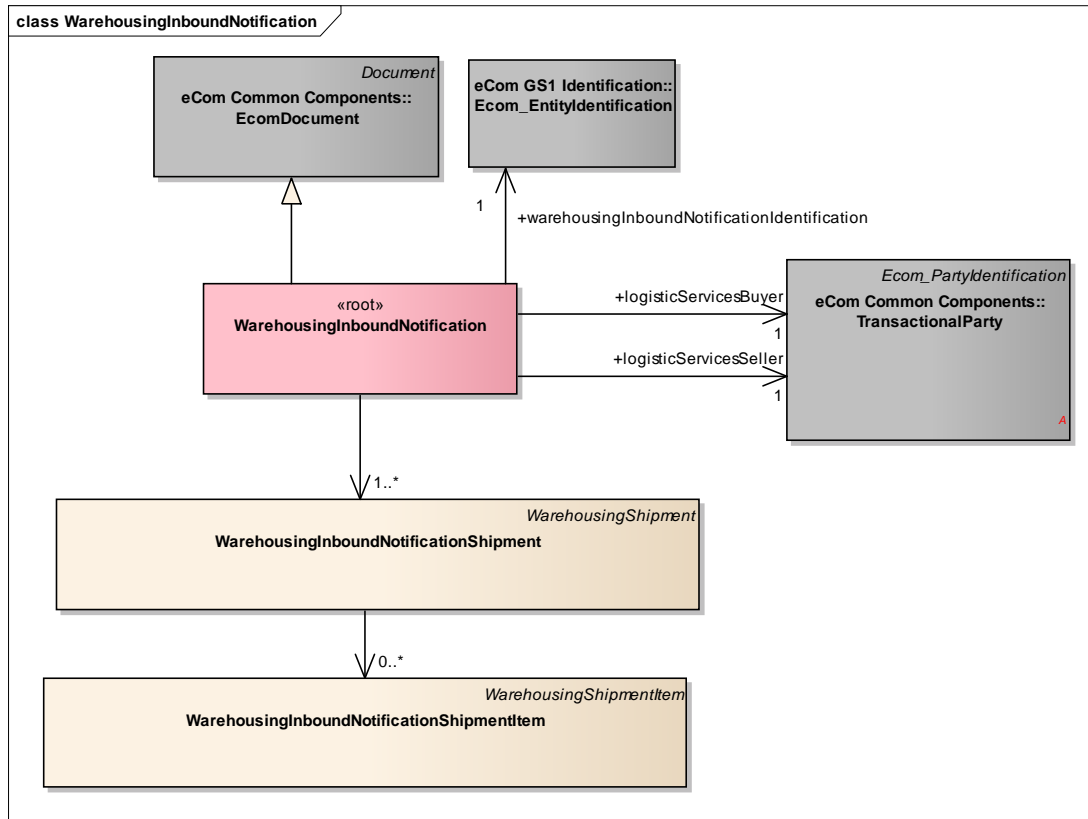
| Content   | Attribute / Role   | Datatype /Secondary class | Multiplicity | Definition   | Requirements |
|-----------|--------------------|---------------------------|--------------|--|--------------|
| Attribute | crossDockIndicator | boolean                   | 0..1         | Indication whether or not the received shipment item needs to be cross-docked instead of put into storage. |              |



**Note:** Reference Shared Common Library Business Message (BMS) Release 3.3 and eCom Domain Common Library Business Message (BMS) Release 3.3 for all common information.

## 4.4 Warehousing Inbound Notification

### Class diagram



### GDD Report

The content of the WarehousingInboundNotification class, its structure and component definitions can be accessed in the Global Data Dictionary:  
[http://apps.gs1.org/GDD/bms/Version3\\_3/Pages/bieDetails.aspx?semanticURN=urn:gs1:gdd:bie:WarehousingInboundNotification](http://apps.gs1.org/GDD/bms/Version3_3/Pages/bieDetails.aspx?semanticURN=urn:gs1:gdd:bie:WarehousingInboundNotification)

| Content                        | Attribute / Role                             | Datatype /Secondary class              | Multiplicity | Definition  | Requirements                       |
|--------------------------------|--|--|--------------|---|------------------------------------|
| WarehousingInboundNotification |  |  |              | Message that supports the warehouse inbound process, and enables a Logistic Services Provider (LSP) to inform his Logistic Services Client (LSC) on the status of goods received on behalf of the client. |                                    |
| Association                    | logisticServicesSeller                       | TransactionalParty                     | 1..1         | A party that provides logistics services to another party.  | [brad_wio:ibsta-3]                 |
| Association                    | logisticServicesBuyer                        | TransactionalParty                     | 1..1         | A party that purchases logistics services from another party.   | [brad_wio:ibsta-2]                 |
| Association                    |  | WarehousingInboundNotificationShipment | 1..*         | Status information on the shipments that have been received or are expected to be received.   | [brad_wio:ibsta-4.3]               |
| Generalization                 |  | EcomDocument                           |              | Basic information about the content of the message including version number, creation date and time.  | WR 14-000110                       |
| Association                    | warehousingInboundNotificationIdentification | Ecom_EntityIdentification              | 1..1         | The identification of the warehousing inbound notification document.  | [brad_wio:ibsta-1]<br>WR 15-000314 |

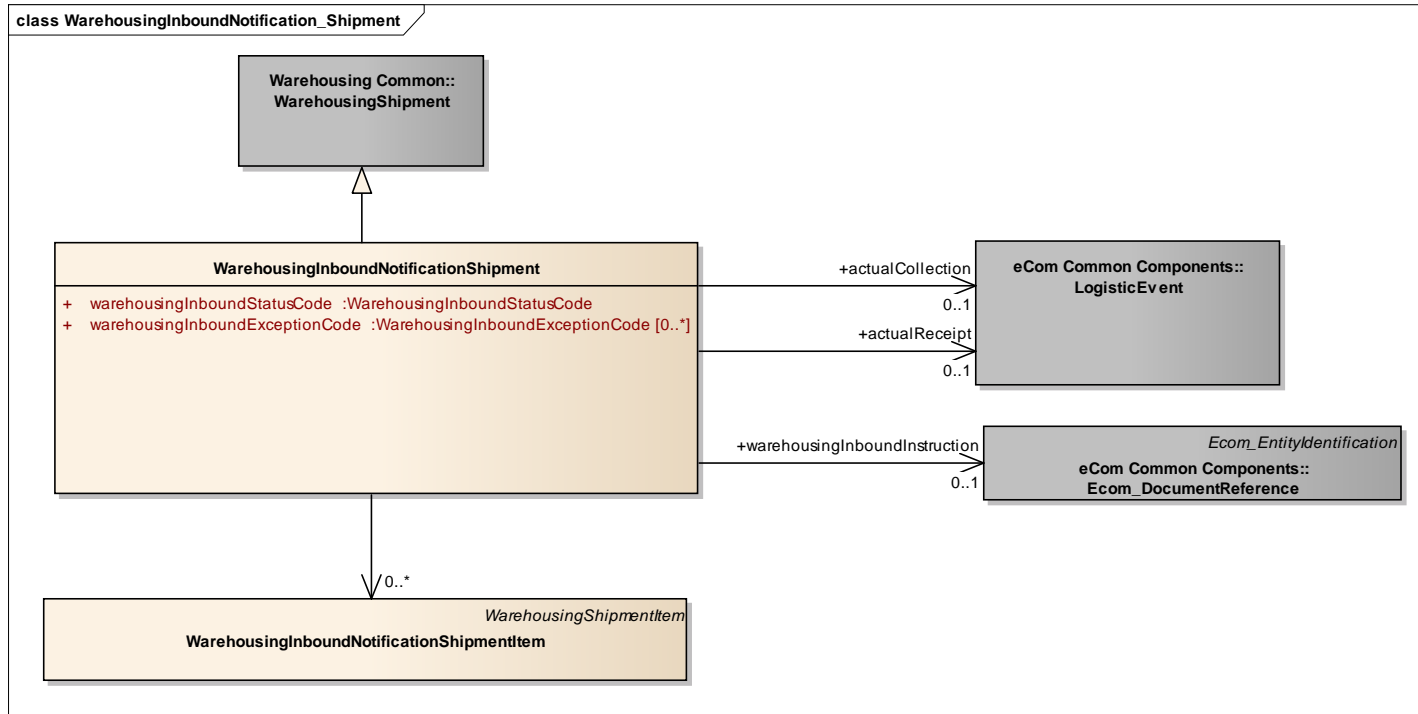


**Note:** Reference Shared Common Library Business Message (BMS) Release 3.3 and eCom Domain Common Library Business Message (BMS) Release 3.3 for all common information.



## 4.5 Warehousing Inbound Notification - Shipment

### Class diagram



## GDD Report

The content of the WarehousingInboundNotificationShipment class, its structure and component definitions can be accessed in the Global Data Dictionary:

[http://apps.gs1.org/GDD/bms/Version3\\_3/Pages/bieDetails.aspx?semanticURN=urn:gs1:gdd:bie:WarehousingInboundNotificationShipment](http://apps.gs1.org/GDD/bms/Version3_3/Pages/bieDetails.aspx?semanticURN=urn:gs1:gdd:bie:WarehousingInboundNotificationShipment)

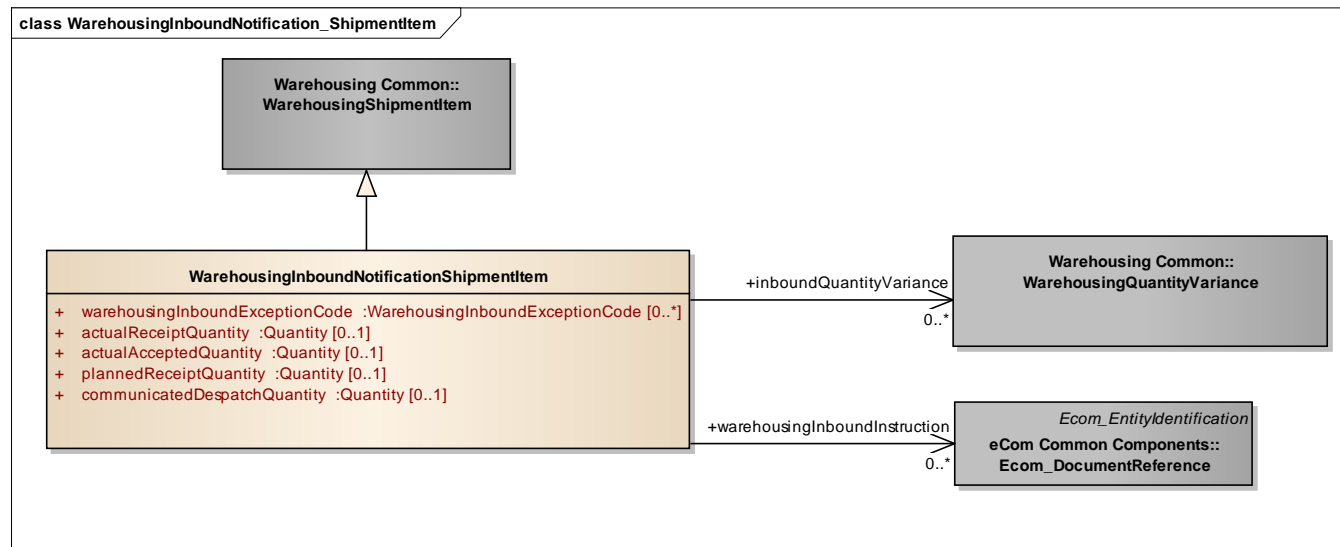
| Content                                       | Attribute / Role                | Datatype /Secondary class                  | Multiplicity | Definition  | Requirements         |
|---|---------------------------------|--|--------------|---|----------------------|
| <b>WarehousingInboundNotificationShipment</b> |                                 |  |              |   |                      |
| Association                                   | actualCollection                | LogisticEvent                              | 0..1         | Details on the date and time the goods were collected from a rail terminal, sea port, airport or inland container terminal. | [brad_wio:ibsta-4.5] |
| Association                                   |                                 | WarehousingInboundNotificationShipmentItem | 0..*         | Details on the items contained in the shipment.   | [brad_wio:ibsta-5]   |
| Association                                   | actualReceipt                   | LogisticEvent                              | 0..1         | Details on the date and time the goods were received in the warehouse.  | [brad_wio:ibsta-4.4] |
| Association                                   | warehousingInboundInstruction   | Ecom_DocumentReference                     | 0..1         | A reference to the related line item in the inbound instruction.  | WR 15-000314         |
| Generalization                                |                                 | WarehousingShipment                        |              |   |                      |
| Attribute                                     | warehousingInboundStatusCode    | WarehousingInboundStatusCode               | 1..1         | Code specifying the status of the inbound shipment.   | [brad_wio:ibsta-4.2] |
| Attribute                                     | warehousingInboundExceptionCode | WarehousingInboundExceptionCode            | 0..*         | Code specifying an exception that occurred in the inbound shipment.   | [brad_wio:ibsta-4.3] |



**Note:** Reference Shared Common Library Business Message (BMS) Release 3.3 and eCom Domain Common Library Business Message (BMS) Release 3.3 for all common information.

## 4.6 Warehousing Inbound Notification – Shipment Item

### Class diagram



### GDD Report

The content of the WarehousingInboundNotificationShipmentItem class, its structure and component definitions can be accessed in the Global Data Dictionary:

[http://apps.gs1.org/GDD/bms/Version3\\_3/Pages/bieDetails.aspx?semanticURN=urn:gs1:gdd:bie:WarehousingInboundNotificationShipmentItem](http://apps.gs1.org/GDD/bms/Version3_3/Pages/bieDetails.aspx?semanticURN=urn:gs1:gdd:bie:WarehousingInboundNotificationShipmentItem)

| Content                                    | Attribute / Role        | Datatype /Secondary class   | Multiplicity | Definition  | Requirements         |
|--|-------------------------|-----------------------------|--------------|---|----------------------|
| WarehousingInboundNotificationShipmentItem |                         |                             |              | A shipment item is collection of trade items and related logistic units that can each be identified (uniquely) within a shipment. |                      |
| Association                                | inboundQuantityVariance | WarehousingQuantityVariance | 0..*         | Quantity and reason of a shortage or surplus occurring in a warehousing process.  | [brad_wio:ibsta-5.7] |

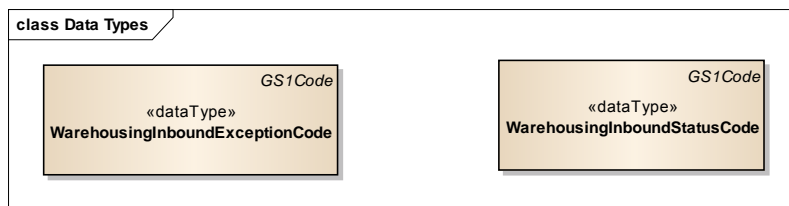
| Content        | Attribute / Role                | Datatype /Secondary class       | Multiplicity | Definition  | Requirements         |
|----------------|---------------------------------|---------------------------------|--------------|---|----------------------|
| Association    | warehousingInboundInstruction   | Ecom_DocumentReference          | 0..1         | A reference to the related line item in the inbound instruction.                                | WR 15-000314         |
| Generalization |                                 | WarehousingShipmentItem         |              |   |                      |
| Attribute      | warehousingInboundExceptionCode | WarehousingInboundExceptionCode | 0..*         | Code specifying an exception that occurred in the inbound shipment.                             | [brad_wio:ibsta-5.2] |
| Attribute      | actualReceiptQuantity           | Quantity                        | 0..1         | The number of items that were received.   | [brad_wio:ibsta-5.3] |
| Attribute      | actualAcceptedQuantity          | Quantity                        | 0..1         | The number of items that were accepted.   | [brad_wio:ibsta-5.4] |
| Attribute      | plannedReceiptQuantity          | Quantity                        | 0..1         | The number of items that were planned to be received, as stated in the inbound instruction.     | [brad_wio:ibsta-5.5] |
| Attribute      | communicatedDespatchQuantity    | Quantity                        | 0..1         | The number of items that were despatched, as stated in the despatch advice sent by the shipper. | [brad_wio:ibsta-5.6] |



**Note:** Reference Shared Common Library Business Message (BMS) Release 3.3 and eCom Domain Common Library Business Message (BMS) Release 3.3 for all common information.

## 4.7 Warehousing Inbound Notification – Data types

### Class diagram



**GDD Report**

| Content                         | Attribute / Role | Datatype /Secondary class | Multiplicity | Definition | Code List                                      |
|---------------------------------|------------------|---------------------------|--------------|------------|--|
| WarehousingInboundExceptionCode |                  |                           |              |            | urn:gs1:gdd:cl:WarehousingInboundExceptionCode |
| Generalization                  |                  | GS1Code                   |              |            |  |
| WarehousingInboundStatusCode    |                  |                           |              |            | urn:gs1:gdd:cl:WarehousingInboundStatusCode    |
| Generalization                  |                  | GS1Code                   |              |            |  |



**Note:** Reference Shared Common Library Business Message (BMS) Release 3.3 and eCom Domain Common Library Business Message (BMS) Release 3.3 for all common information.

## 4.8 Enumerations (message specific)

Not applicable

## 4.9 Code Lists

| Class   | Codelist                        | GDD Link  |
|---|---------------------------------|---|
| WarehousingInboundInstructionShipment   | WarehousingReceiptTypeCode      | <a href="http://apps.gs1.org/GDD/Pages/clDetails.aspx?semanticURN=urn:gs1:gdd:cl:WarehousingReceiptTypeCode">http://apps.gs1.org/GDD/Pages/clDetails.aspx?semanticURN=urn:gs1:gdd:cl:WarehousingReceiptTypeCode</a>           |
| WarehousingInboundNotificationShipment,<br>WarehousingInboundNotificationShipmentItem | WarehousingInboundExceptionCode | <a href="http://apps.gs1.org/GDD/Pages/clDetails.aspx?semanticURN=urn:gs1:gdd:cl:WarehousingInboundExceptionCode">http://apps.gs1.org/GDD/Pages/clDetails.aspx?semanticURN=urn:gs1:gdd:cl:WarehousingInboundExceptionCode</a> |
| WarehousingInboundNotificationShipment  | WarehousingInboundStatusCode    | <a href="http://apps.gs1.org/GDD/Pages/clDetails.aspx?semanticURN=urn:gs1:gdd:cl:WarehousingInboundStatusCode">http://apps.gs1.org/GDD/Pages/clDetails.aspx?semanticURN=urn:gs1:gdd:cl:WarehousingInboundStatusCode</a>       |



**Note:** Refer to the Global Data Dictionary (GDD) for the code values.



## 5 Business Message Examples

### 5.1 Example 1

This is an example of the Warehousing Inbound Instruction message.

#### Party Information

| GS1 Global Location Number | Party Type               |
|----------------------------|--------------------------|
| 3333333000001              | Logistic Services Seller |
| 2222222000004              | Logistic Services Buyer  |
| 1111111000007              | Shipper                  |
| 3333333000018              | Receiver                 |

#### Message Example 1

| Attribute  | Value              |
|--|--------------------|
| <b>WarehousingInboundInstruction</b>                                       |                    |
| creationDateTime   | 2012-07-11 12:15   |
| documentStatusCode   | ORIGINAL           |
| documentActionCode   | ADD                |
| <b>TransactionalParty (+logisticServicesSeller)</b>                        |                    |
| gln  | 3333333000001      |
| <b>TransactionalParty (+logisticServicesBuyer)</b>                         |                    |
| gln  | 2222222000004      |
| <b>EntityIdentification (+warehousingInboundInstructionIdentification)</b> |                    |
| entityIdentification   | INSREC00123        |
| <b>WarehousingInboundInstructionShipment</b>                               |                    |
| warehousingReceiptTypeCode   | PRIORITY_RECEIPT   |
| <b>TransactionalParty (+receiver)</b>                                      |                    |
| gln  | 3333333000018      |
| <b>TransactionalParty (+shipper)</b>                                       |                    |
| gln  | 1111111000007      |
| <b>ShipmentIdentification (+)</b>  |                    |
| gsin   | 11111110000834053  |
| <b>PackageTotal (+)</b>  |                    |
| packageTypeCode  | AF                 |
| totalPackageQuantity   | 2                  |
| <b>LogisticUnit (+)</b>  |                    |
| packageTypeCode  | : AF               |
| <b>LogisticUnitIdentification (+)</b>                                      |                    |
| sscc   | 311111110000123455 |
| <b>LogisticUnit (+)</b>  |                    |
| packageTypeCode  | AF                 |

| Attribute  | Value              |
|--|--------------------|
| <b>LogisticUnitIdentification (+)</b>            |                    |
| sscc   | 311111110000123554 |
| <b>CarrierPickUpDropOffDetails (+)</b>           |                    |
| <b>TransportMeans (+)</b>                        |                    |
| transportMeansTypeCode                           | 31                 |
| transportMeansID                                 | 11-BB-AA           |
| Person (+transportResponsiblePerson)             | personName: LENMAN |
| <b>IdentityDocument (+)</b>                      |                    |
| identityDocumentNumber                           | 12345              |
| identityDocumentType                             | DRIVERS_LICENSE    |
| <b>LogisticEvent (+plannedReceipt)</b>           |                    |
| <b>DateTimeRange (+logisticEventPeriod)</b>      |                    |
| beginDate  | 2012-07-12         |
| beginTime  | 10:00              |
| endDate  | 2012-07-12         |
| endTime  | 11:00              |
| <b>WarehousingInboundInstructionShipmentItem</b> |                    |
| lineItemNumber                                   | 1                  |
| plannedReceiptQuantity                           | 40                 |
| <b>TransactionalTradeItem</b>                    |                    |
| gtin   | 02222222003333     |
| <b>LogisticUnit</b>                              |                    |
| tradeItemQuantity                                | 20                 |
| <b>LogisticUnitIdentification (+)</b>            |                    |
| sscc   | 311111110000123455 |
| <b>LogisticUnit</b>                              |                    |
| tradeItemQuantity                                | 20                 |
| <b>LogisticUnitIdentification (+)</b>            |                    |
| sscc   | 311111110000123554 |

## 5.2 Example 2

### Warehousing Inbound Notification

This is an example of the Warehousing Inbound Notification message. The Manufacturer 2222222 has outsourced a distribution centre to LSP 3333333.

The LSP informs the Manufacturer that the unloading of the shipment from Supplier 1111111 has been completed.

### Party Information

| GS1 Global Location Number | Party Type               |
|----------------------------|--------------------------|
| 3333333000001              | Logistic Services Seller |
| 2222222000004              | Logistic Services Buyer  |





| GS1 Global Location Number | Party Type |
|----------------------------|------------|
| 1111111000007              | Shipper    |
| 3333333000018              | Receiver   |

**Message Example 2**

| Attribute   | Value              |
|---|--------------------|
| <b>WarehousingInboundNotification</b>                                       |                    |
| creationDateTime  | 2012-07-11 12:15   |
| documentStatusCode  | ORIGINAL           |
| documentActionCode  | ADD                |
| <b>EntityIdentification (+warehousingInboundNotificationIdentification)</b> |                    |
| entityIdentification  | IBSTA00113         |
| <b>TransactionalParty (+logisticServicesSeller)</b>                         |                    |
| gln   | 3333333000001      |
| <b>TransactionalParty (+logisticServicesBuyer)</b>                          |                    |
| gln   | 2222222000004      |
| <b>WarehousingInboundNotificationShipment</b>                               |                    |
| warehousingInboundStatusCode  | UNLOADING_FINISHED |
| <b>TransactionalParty (+receiver)</b>                                       |                    |
| gln   | 3333333000018      |
| <b>TransactionalParty (+shipper)</b>  |                    |
| gln   | 1111111000007      |
| <b>ShipmentIdentification (+)</b>   |                    |
| gsin  | 11111110000834053  |
| <b>DocumentReference (+warehousingInboundInstruction)</b>                   |                    |
| entityIdentification  | INSREC00123        |
| <b>PackageTotal (+)</b>   |                    |
| packageTypeCode   | AF                 |
| totalPackageQuantity  | 2                  |
| <b>LogisticUnit (+)</b>   |                    |
| packageTypeCode   | AF                 |
| LogisticUnitIdentification (+)  |                    |
| sscc  | 311111110000123455 |
| <b>LogisticUnit (+)</b>   |                    |
| packageTypeCode   | AF                 |
| LogisticUnitIdentification (+)  |                    |
| sscc  | 311111110000123554 |
| <b>LogisticEvent (+actualReceipt)</b>                                       |                    |
| <b>DateOptionalTime (+logisticEventDateTime)</b>                            |                    |
| date  | 2012-07-12         |
| time  | 11:30              |



---

## **6 Implementation Considerations**

### **6.1 User Guide**

The Functional User Guide contains more information about the structure and content of the Warehouse Inbound Instruction and Notification message:

[http://www.gs1.org/docs/ecom/xml/3/3.3/eCom-Trade\\_messages.html#WarehouseInboundInstructionandNotification](http://www.gs1.org/docs/ecom/xml/3/3.3/eCom-Trade_messages.html#WarehouseInboundInstructionandNotification)

### **6.2 Message Specific Considerations**

Not applicable

## 7 Summary of Changes

Any change in the GS1 standards is done based on the Work Request (WR) submitted by the GS1 User Companies or Member Organisations. All Work Requests are documented in the Work Request system available on the GS1 website: <http://wr.gs1.org>. The system is accessible to registered users. New visitors need to register first, to be able to access it. WRs can be searched by the number referenced in tables below, see: Search Work Requests. The number starts with the two last digits of the year when it was submitted, followed by the consecutive number within that year.



**Note:** WRs submitted earlier than February 2012 should be searched in Old Change Requests.

### 7.1 BMS Release 3.1

First publication

### 7.2 BMS Release 3.2

| Change  | Associated WR |
|---|---------------|
| <p>Added Attribute Value Pair at the root, line item and sub line item levels</p> <div> class WarehousingInboundInstruction - maintenance view <div> <div>«root»<br/>WarehousingInboundInstruction</div> <div>maintenance<br/>Change: (Verified) 3.2 changed generalisation from Document to eComDocument class to include AVP (WR 14-110)</div> </div> </div>  | 14-000110     |
| <p>Added Attribute Value Pair at the root, line item and sub line item levels</p> <div> class WarehousingInboundInstructionShipmentItem - maintenance view <div> <div>Warehousing Common::WarehousingShipmentItem</div> <div>maintenance<br/>Change: (Verified) 3.2 added +avpList (WR 14-110)<br/>Change: (Verified) 3.2 added +parentLineItemNumber (WR 14-021 &amp; 14-044)</div> </div> <div> <div>WarehousingInboundInstructionShipmentItem</div> <div>+ plannedReceiptQuantity : Quantity [0..1]<br/>+ crossDockIndicator: boolean [0..1]</div> </div> <div> <div>Warehousing Common::WarehousingServiceInstruction</div> </div> <div>+inlineServiceInstruction 0..*</div> </div> | 14-000110     |
| <p>Added Attribute Value Pair at the root, line item and sub line item levels</p> <div> class WarehousingInboundNotification - maintenance view <div> <div>«root»<br/>WarehousingInboundNotification</div> <div>maintenance<br/>Defect: (Verified) 3.2 changed generalisation from Document to eComDocument class to include AVP (WR 14-110)</div> </div> </div>  | 14-000110     |

| Change  | Associated WR           |
|---|-------------------------|
| <p>Added Attribute Value Pair at the root, line item and sub line item levels</p> <pre> class WarehousingInboundNotificationShipmentItem - maintenance view     class WarehousingCommon::WarehousingShipmentItem         maintenance         Change: (Verified) 3.2 added +avpList (WR 14-110)         Change: (Verified) 3.2 added +parentLineItemNumber (WR 14-021 &amp; 14-044)     end class     class WarehousingInboundNotificationShipmentItem         + warehousingInboundExceptionCode: WarehousingInboundExceptionCode [0..1]         + actualReceiptQuantity: Quantity [0..1]         + actualAcceptedQuantity: Quantity [0..1]         + plannedReceiptQuantity: Quantity [0..1]         + communicatedDespatchQuantity: Quantity [0..1]     end class     class WarehousingCommon::WarehousingQuantityVariance         maintenance     end class     class SharedCommonComponents::DocumentReference         EntityIdentification         maintenance         Change: (Complete) 3.1 added revisionNumber (WR 12-153)     end class     WarehousingCommon::WarehousingShipmentItem --&gt; WarehousingInboundNotificationShipmentItem     WarehousingInboundNotificationShipmentItem --&gt; WarehousingCommon::WarehousingQuantityVariance : +inboundQuantityVariance 0..*     WarehousingInboundNotificationShipmentItem --&gt; SharedCommonComponents::DocumentReference : +warehousingInboundInstruction 0..1         </pre> | <p><b>14-000110</b></p> |

### 7.3 BMS Release 3.3

| Change   | Associated WR   |
|--|---|
| <p>Created Ecom_EntityIdentification class and changed association from the previous EntityIdentification</p> <pre> class WarehousingInboundNotification - maintenance view     class eComGS1Identification::Ecom_EntityIdentification         maintenance         Change: (New) 3.3 New class (WR 15-314)     end class     class WarehousingInboundNotification         «root»         maintenance         Change: (Complete) 3.2 changed generalisation from Document to eComDocument class to include AVP (WR 14-110)         Change: (New) 3.3 changed association from EntityIdentification to Ecom_EntityIdentification (WR 15-314)     end class     WarehousingInboundNotification --&gt; eComGS1Identification::Ecom_EntityIdentification : +warehousingInboundNotificationIdentification 1         </pre>   | <p><b>15-000314</b></p> <p>Make GS1 identification keys optional in GS1 EDI XML</p> |
| <p>Created Ecom_DocumentReference class and changed association from the previous DocumentReference</p> <pre> class WarehousingInboundNotificationShipmentItem - maintenance view     class WarehousingInboundNotificationShipmentItem         + warehousingInboundExceptionCode: WarehousingInboundExceptionCode [0..1]         + actualReceiptQuantity: Quantity [0..1]         + actualAcceptedQuantity: Quantity [0..1]         + plannedReceiptQuantity: Quantity [0..1]         + communicatedDespatchQuantity: Quantity [0..1]     end class     class eComCommonComponents::Ecom_DocumentReference         Ecom_EntityIdentification         maintenance         Change: (New) 3.3 added +referenceDocumentUri (WR 16-261)         Change: (New) 3.3 New class (WR 15-314)     end class     WarehousingInboundNotificationShipmentItem --&gt; eComCommonComponents::Ecom_DocumentReference : +warehousingInboundInstruction 0..*         </pre> | <p><b>15-000314</b></p> <p>Make GS1 identification keys optional in GS1 EDI XML</p> |

| Change  | Associated WR  |
|---|--|
| <p>Created Ecom_EntityIdentification class and changed association from the previous EntityIdentification</p> <pre> classDiagram     class WarehouseInboundInstruction {         «root»         maintenance     }     class Ecom_EntityIdentification {         maintenance     }     WarehouseInboundInstruction "1" --&gt; "1" Ecom_EntityIdentification : +warehouseInboundInstructionIdentification     </pre> <p>Change: (Complete) 3.2 changed generalisation from Document to eComDocument class to include AVP (WR 14-110)<br/>Change: (New) 3.3 changed association from EntityIdentification to Ecom_EntityIdentification (WR 15-314)</p> | <p><b>15-000314</b><br/>Make GS1 identification keys optional in GS1 EDI XML</p> |

## 8 Appendices

Not Applicable

## 9 Acknowledgements

### 9.1.1 Work Group

| Function | Name                        | Company / organisation                                    |
|----------|-----------------------------|---|
| Co-chair | Rossner (Pottier), Natascha | GS1 France  |
| Co-chair | Schmidt, Tom Eric           | August Storck KG  |
| Member   | Bemrose, Jonathan           | R&R Ice Cream   |
| Member   | Bodemer, Petra              | dm-drogerie markt GmbH + Co. KG                           |
| Member   | Boikanyo, Rebene            | GS1 South Africa / Consumer Goods Council of South Africa |
| Member   | Canada, ON                  | M3B 3L1   |
| Member   | Carlson, Jim                | General Mills, Inc.                                       |
| Member   | Chresta, Richard            | GS1 Switzerland   |
| Member   | Cook, Don                   | Wal-Mart Stores, Inc.                                     |
| Member   | Cox, Marc                   | Philips Electronics N.V.                                  |
| Member   | Darnell, David              | Systrends   |
| Member   | De Flou, Nele               | GS1 Belgium & Luxembourg                                  |
| Member   | Dicks, Arne                 | GS1 Germany   |
| Member   | Duvinger, Karina            | GS1 Sweden  |
| Member   | Foerderer, Klaus            | GS1 Germany   |
| Member   | Gathmann, Stefan            | GS1 Ireland   |
| Member   | Grangard, Anders            | GS1 Global Office   |

| Function | Name                     | Company / organisation            |
|----------|--------------------------|-----------------------------------|
| Member   | Harpell, Eileen          | GS1 Community Room Staff          |
| Member   | Hand, Phil               | JDA Software                      |
| Member   | Herregodts, Kurt         | GS1 Belgium & Luxembourg          |
| Member   | Kempkes, Fred            | Unilever N.V.                     |
| Member   | Kernan, Brendan          | GS1 Ireland                       |
| Member   | Kidd, Robin              | Nestle                            |
| Member   | Krid, Anne-Claire        | GS1 France                        |
| Member   | Lanoue, Tom              | General Mills, Inc.               |
| Member   | Laur, Rita               | GS1 Canada                        |
| Member   | Lenman, Mia              | GS1 Sweden                        |
| Member   | Lerch, Hanjoerg          | METRO Group                       |
| Member   | Moberg, Dale             | Axway                             |
| Member   | Montes de Oca, Alejandra | GS1 Mexico                        |
| Member   | Ng, Ella                 | GS1 Australia                     |
| Member   | Peelen, Esther           | GS1 Netherlands                   |
| Member   | Pelekies, Andreas        | GS1 Germany                       |
| Member   | Perrier, Patricia        | GS1 France                        |
| Member   | Przybilla, Christian     | GS1 Germany                       |
| Member   | Pujol, Xavier            | GS1 Spain                         |
| Member   | Racek, Greg              | Wal-Mart Stores, Inc.             |
| Member   | Repetto, Mirko           | GS1 Italy                         |
| Member   | Robba, Steven            | 1WorldSync Holdings, Inc.         |
| Member   | Rosell, Pere             | GS1 Spain                         |
| Member   | Rosenberg, Steven        | GS1 US                            |
| Member   | Schmid, Sue              | GS1 Australia                     |
| Member   | Schneider, Christian     | GS1 Switzerland                   |
| Member   | Sehorz, Eugen            | GS1 Austria                       |
| Member   | Sharma, Vishal           | General Mills, Inc.               |
| Member   | Shimazaki, Ayako         | GS1 Japan                         |
| Member   | Sion, Emilie             | GS1 France                        |
| Member   | Souza, Nadia             | GS1 Brasil                        |
| Member   | Strand, Roman            | GS1 Germany                       |
| Member   | Tan, Milton              | GS1 Malaysia                      |
| Member   | Tompsett, Simon          | Waitrose                          |
| Member   | Trelle, Ute              | 1WorldSync Holdings, Inc.         |
| Member   | Tse, Steve               | GS1 Hong Kong                     |
| Member   | Tyson, Betty             | Knouse Foods Cooperative, Inc     |
| Member   | Van den Bergh, Senne     | GS1 Belgium & Luxembourg          |
| Member   | Van der Eijk, Pim        | OASIS - Sonnenglanz Consulting BV |
| Member   | Veldhuis, Saskia         | Procter & Gamble Co.              |

| Function | Name               | Company / organisation |
|----------|--------------------|------------------------|
| Member   | Welch, Shan        | GS1 UK                 |
| Member   | Westerkamp, Jan    | GS1 Netherlands        |
| Member   | Wilson, Mary       | GS1 US                 |
| Member   | Windsperger, Bekki | Best Buy Co., Inc.     |
| Member   | Yang, Shaopeng     | GS1 China              |
| Member   | Yusdiar, Dani      | GS1 Indonesia          |
| Member   | Zwanziger, Greg    | SUPERVALU              |

### 9.1.2 Development Team Members

| Function                   | Name              | Organisation      |
|----------------------------|-------------------|-------------------|
| GSMP Process Lead          | Jean-Luc Champion | GS1 Global Office |
| Technical Development Lead | Ewa Iwicka        | GS1 Global Office |
| Peer Review                | Mark Van Eeghem   | GS1 Global Office |