



The Global Language of Business

Transport Instruction and Response Business Message Standard (BMS)

Release 3.3, Ratified, Mar 2017



Document Summary

Document Item	Current Value
Document Name	Transport Instruction and Response Business Message Standard (BMS)
Document Date	Mar 2017
Document Version	3.3
Document Issue	1
Document Status	Ratified

Work Request Reference

Date of WR Submission to GSMP:	WR Submitter(s):	Refer to Work Request (WR) Number(s):
02-Jul-2012	GS1 Germany	12-000202
07-Feb-2014	GS1 Germany	14-000021
20-Mar-2014	GS1 Slovenia	14-000044
25-Jun-2014	GS1 Global Office	14-000110
24-Apr-2015	GS1 Germany	15-000100
27-Aug-2015	3M	15-000244

Business Requirements Document (BRAD) Reference

BRAD Title	BRAD Issue Date	BRAD Version
Transport Management		1.0

Document Change History

Date of Change	Version	Changed By	Reason for Change	Summary of Change
12-Jan-2012	BMS 3.0 – Issue 1	Mark Van Eeghem	BMS Release 3.0	See summary of changes
01-May-2013	BMS 3.1 – Issue 1	Coen Janssen	BMS Release 3.1	See summary of changes
15-Sep-2014	BMS 3.2 – Issue 1	Ewa Iwicka	BMS Release 3.2	See summary of changes
01-Mar-2017	BMS 3.3 – Issue 1	Ewa Iwicka	BMS Release 3.3	See summary of changes

Disclaimer

GS1®, under its IP Policy, seeks to avoid uncertainty regarding intellectual property claims by requiring the participants in the Work Group that developed this **Transport Instruction and Response Business Message Standard (BMS)** to agree to grant to GS1 members a royalty-free licence or a RAND licence to Necessary Claims, as that term is defined in the GS1 IP Policy. Furthermore, attention is drawn to the possibility that an implementation of one or more features of this Specification may be the subject of a patent or other intellectual property right that does not involve a Necessary Claim.



Any such patent or other intellectual property right is not subject to the licencing obligations of GS1. Moreover, the agreement to grant licences provided under the GS1 IP Policy does not include IP rights and any claims of third parties who were not participants in the Work Group.

Accordingly, GS1 recommends that any organization developing an implementation designed to be in conformance with this Specification should determine whether there are any patents that may encompass a specific implementation that the organisation is developing in compliance with the Specification and whether a licence under a patent or other intellectual property right is needed. Such a determination of a need for licencing should be made in view of the details of the specific system designed by the organisation in consultation with their own patent counsel.

THIS DOCUMENT IS PROVIDED "AS IS" WITH NO WARRANTIES WHATSOEVER, INCLUDING ANY WARRANTY OF MERCHANTABILITY, NONINFRINGEMENT, FITNESS FOR PARTICULAR PURPOSE, OR ANY WARRANTY OTHERWISE ARISING OUT OF THIS SPECIFICATION. GS1 disclaims all liability for any damages arising from use or misuse of this Standard, whether special, indirect, consequential, or compensatory damages, and including liability for infringement of any intellectual property rights, relating to use of information in or reliance upon this document.

GS1 retains the right to make changes to this document at any time, without notice. GS1 makes no warranty for the use of this document and assumes no responsibility for any errors which may appear in the document, nor does it make a commitment to update the information contained herein.

GS1 and the GS1 logo are registered trademarks of GS1 AISBL.

Table of Contents

1	Business Domain View	5
1.1	Introduction	5
1.2	References	5
2	Business Context	5
3	Business Transaction View	6
3.1	Business Transaction – Issue Transport Instruction	6
3.2	Confirm Transport Instruction	7
4	Business Information View	8
4.1	Transport Instruction Response (message).....	10
4.2	Transport Instruction Consignment.....	12
4.3	Transport Instruction Consignment Item	17
4.4	Transport Instruction Shipment	20
4.5	Transport Instruction Shipment Item	25
4.6	Transport Instruction Terms	28
4.7	Transport Instruction Transport Equipment	30
4.8	Transport Instruction Transport Movement.....	32
4.9	Enumerations (message specific)	34
4.10	Code Lists	34
5	Business Message Examples	35
5.1	Example 1.....	35
5.2	Example 2.....	36
5.3	Example 3.....	38
6	Implementation Considerations.....	40
6.1	User Guide	40
6.2	Message Specific Considerations	40
7	Summary of Changes	41
7.1	BMS Release 3.0	41
7.2	BMS Release 3.1	41
7.3	BMS Release 3.2	41
7.4	BMS Release 3.3	43
8	Appendices	45
9	Acknowledgements.....	45
9.1.1	Work Group	45
9.1.2	Development Team Members	47

1 Business Domain View

1.1 Introduction

Message Definition

Transport Instruction Message Definition

The Transport Instruction allows communication and sharing the arrangements (through the agreed conditions) of the movement of the goods (including collection and delivery) between all parties involved and providing the information necessary to perform the handling of the goods.

Transport Instruction Response Message Definition

The Transport Instruction Response may be sent from Logistic Services Seller to Logistic Services Buyer in order to confirm the instruction and to provide further detail.

Principles

The Transport Instruction will be sent by the Logistic Services Buyer (supplier, retailer, 3rd party warehouse or freight forwarder) to a Logistic Services Seller (freight forwarder or carrier) upon order creation.

The Transport Instruction can include a request for either executing a **consignment** or executing a **shipment**. The trading partners need the ability to differentiate between less detailed transport instructions (shipments) and more detailed instructions (consignments).

Exchanging Transport Instruction Response message is optional. In many cases there exist standing agreements that the Logistic Services Seller will accept all Transport Instructions from the Logistic Services Buyer 'as sent'. In that case sending the Transport Instruction Response adds no value to the process and partners can agree NOT to exchange this message-type.

1.2 References

Reference Name
BRAD Transport Management (GS1, 2009)
Logistics Interoperability Model (GS1, 2007)
BMS eCom Common Library 3.3 (GS1, 2014)
BMS Shared Common Library 3.3 (GS1, 2014)

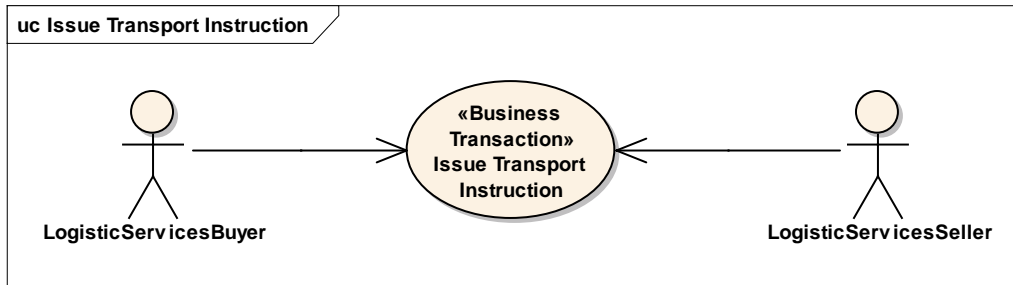
2 Business Context

Context Category	Value(s)
Industry	All
Geopolitical	All
Product	All
Process	Deliver / Transport Management
System Capabilities	GS1 System
Official Constraints	None

3 Business Transaction View

3.1 Business Transaction – Issue Transport Instruction

Use Case Diagram



Use Case Description

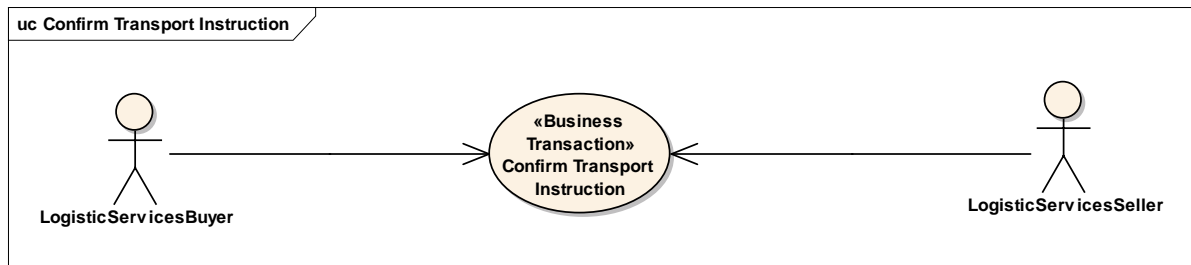
Use Case ID	UC-1									
Use Case Name	Issue Transport Instruction									
Use Case Description	The main objectives are to communicate/ share the arrangement of the transport of goods between all parties involved in the movement of the consignment(s) and or shipment(s) as well as providing the information necessary to perform that transport and delivery of the goods.									
Actors (Goal)	Logistic Services Buyer (LSB) Logistic Services Seller (LSS)									
Performance Goals	Not applicable									
Preconditions	Interoperation agreement is in place.									
Post conditions	Transport instructions have been received by the LSS									
Scenario	<p>Begins when the Logistic Services Buyer determines transport services are needed. Continues with...</p> <table><tr><th>Step #</th><th>Actor</th><th>Activity Step</th></tr><tr><td>1</td><td>LSB</td><td>Issues a transport instruction</td></tr><tr><td>2</td><td>LSS</td><td>Receives the transport instruction</td></tr></table> <p>Ends when the LSS has processed the transport instruction in the transport management system.</p>	Step #	Actor	Activity Step	1	LSB	Issues a transport instruction	2	LSS	Receives the transport instruction
Step #	Actor	Activity Step								
1	LSB	Issues a transport instruction								
2	LSS	Receives the transport instruction								
Alternative Scenario	Not applicable									
Related Requirements	Not applicable									
Related Rules	Not applicable									

Activity Diagram(s)

Not applicable

3.2 Confirm Transport Instruction

Use Case Diagram



Use Case Description

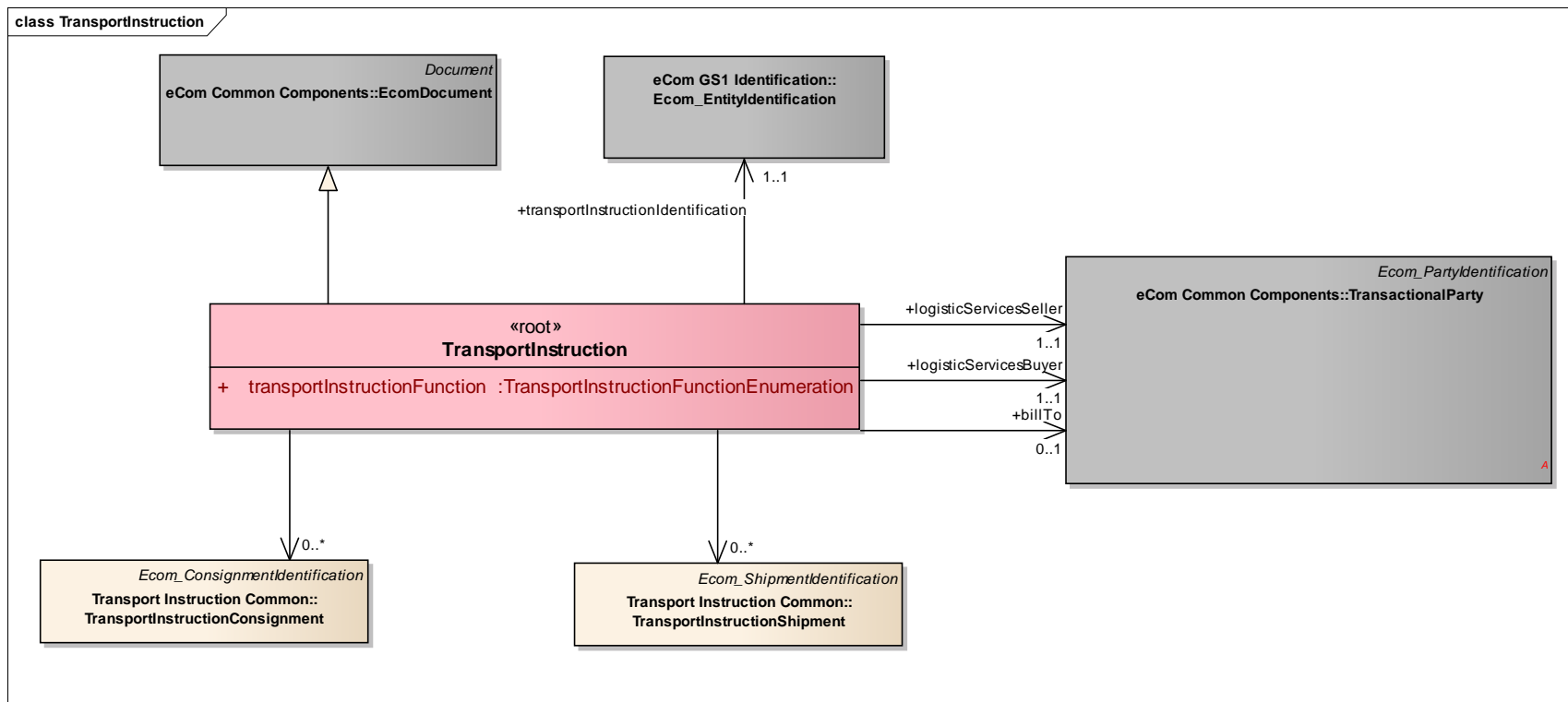
Use Case ID	UC-2												
Use Case Name	Confirm Transport Instruction												
Use Case Description	The main objectives are to give the confirmation or modification of the arrangement of the transport of goods between all parties.												
Actors (Goal)	Logistic Services Buyer Logistic Services Seller												
Performance Goals	Not applicable												
Preconditions	The Logistic Services Seller did receive a transport instruction. In the interoperation agreement it was agreed between the Logistic Services Buyer and Logistic Service Seller that												
Post conditions	Transport instruction response has been received by the LSB.												
Scenario	<p>Begins when the Logistic Service Seller has determined the appropriate response to the transport instruction.</p> <p>Continues with...</p> <table><tr><th>Step #</th><th>Actor</th><th>Activity Step</th></tr><tr><td>1</td><td>LSS</td><td>Issues a transport instruction confirmation</td></tr><tr><td>2</td><td>LSB</td><td>Receives the transport instruction confirmation</td></tr><tr><td>3</td><td></td><td></td></tr></table> <p>Ends when the LSB has processed the transport instruction confirmation in the transport management system.</p>	Step #	Actor	Activity Step	1	LSS	Issues a transport instruction confirmation	2	LSB	Receives the transport instruction confirmation	3		
Step #	Actor	Activity Step											
1	LSS	Issues a transport instruction confirmation											
2	LSB	Receives the transport instruction confirmation											
3													
Alternative Scenario	Not applicable												
Related Requirements	Not applicable												
Related Rules	Not applicable												

Activity Diagram(s)

Not applicable

4 Business Information View

Class diagram



GDD report

The content of the TransportInstruction class, its structure and component definitions can be accessed in the Global Data Dictionary:
http://apps.gs1.org/GDD/bms/Version3_3/Pages/bieDetails.aspx?semanticURN=urn:gs1:gdd:bie:TransportInstruction

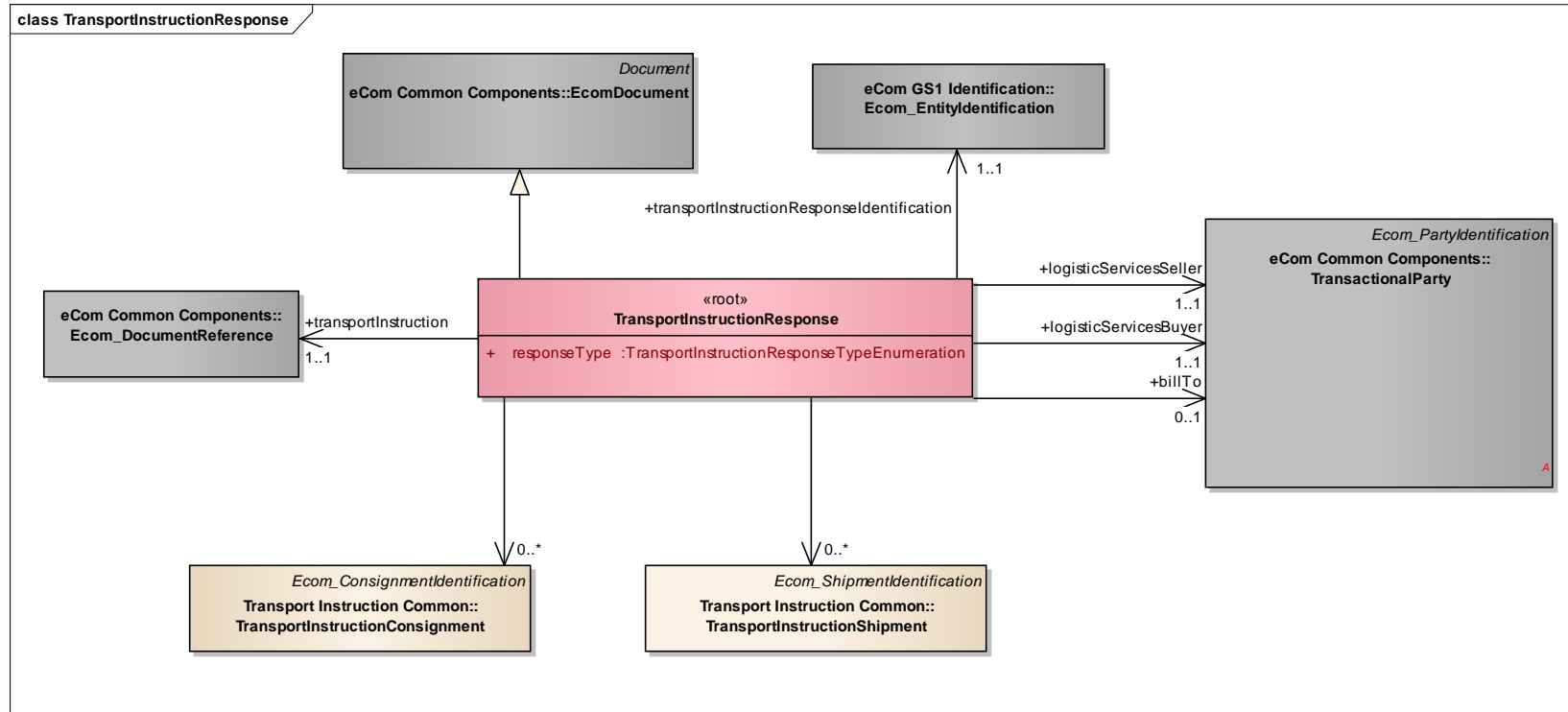
Content	Attribute / Role	Datatype / Secondaryclass	Multiplicity	Definition	Requirements
TransportInstruction				The main objectives of the Transport Instruction are to communicate and share the arrangements (through the agreed conditions) of the movement of the goods (including collection and delivery) between all parties involved and providing the information necessary to perform the handling of the goods.	
Association	logisticServices Buyer	TransactionalParty	1..1	A party that purchases logistics services from another party.	BRAD TransportInstruction-5
Association		TransportInstruction Consignment	0..*	Provides the information on a consignment contained in this transport instruction.	BRAD TransportInstruction-8, 12, 13
Association		TransportInstruction Shipment	0..*	Provides the information on a shipment contained in this transport instruction.	BRAD TransportInstruction-8, 9, 10, 11, 15
Generalization		EcomDocument		Basic information about the content of the message including version number, creation date and time.	WR 14-000110
Association	billTo	TransactionalParty	0..1	Identifies the party who receives the invoice. Synonym: Invoicee.	BRAD TransportInstruction-7
Association	logisticServices Seller	TransactionalParty	1..1	A party that provides logistics services to another party.	BRAD TransportInstruction-6
Association	transportInstructionIdentification	Ecom_EntityIdentification	1..1	The identification of the transport instruction document.	BRAD TransportInstruction-1 WR 15-000314
Attribute	transportInstructionFunction	TransportInstructionFunctionEnumeration	1..1	The transport instruction function identifies whether the transport instruction is consignment-based or shipment-based.	BRAD TransportInstruction-3



Note: Reference Shared Common Library Business Message (BMS) Release 3.3 and eCom Domain Common Library Business Message (BMS) Release 3.3 for all common information.

4.1 Transport Instruction Response (message)

Class Diagram



GDD Report

The content of the TransportInstructionResponse class, its structure and component definitions can be accessed in the Global Data Dictionary:

http://apps.gs1.org/GDD/bms/Version3_3/Pages/bieDetails.aspx?semanticURN=urn:gs1:gdd:bie:TransportInstructionResponse

Content	Attribute / Role	Datatype / Secondaryclass	Multiplicity	Definition	Requirements
TransportInstructionResponse				The main objective of the Transport Instruction Response is to confirm the requested transport services and where needed provide additional information.	

Content	Attribute / Role	Datatype / Secondaryclass	Multiplicity	Definition	Requirements
Generalization		EcomDocument		Basic information about the content of the message including version number, creation date and time.	WR 14-000110
Association	logisticServices Seller	TransactionalParty	1..1	A party that provides logistics services to another party.	BRAD TransportInstructionConfirmation-5
Association	transportInstruction	Ecom_DocumentReference	1..1	The identification of the referenced transport instruction.	BRAD TransportInstructionConfirmation-7 WR 15-000314
Association		TransportInstruction Shipment	0..*	Provides the information on a shipment contained in this transport instruction response.	BRAD TransportInstructionConfirmation-1, 15, 16
Association	logisticServices Buyer	TransactionalParty	1..1	A party that purchases logistics services from another party.	BRAD TransportInstructionConfirmation-4
Association	transportInstructionResponseIdentification	Ecom_EntityIdentification	1..1	The identification of the transport instruction response document.	BRAD TransportInstructionConfirmation-2 WR 15-000314
Association		TransportInstruction Consignment	0..*	Provides the information on a consignment contained in this transport instruction response.	BRAD TransportInstructionConfirmation-1, 10, 11, 12, 13, 19
Association	billTo	TransactionalParty	0..1	Identifies the party who receives the invoice. Synonym: Invoicee.	BRAD TransportInstructionConfirmation-6
Attribute	responseType	TransportInstruction ResponseTypeEnumeration	1..1	Code specifying the acceptance or non-acceptance of the services requested in the Transport Instruction.	

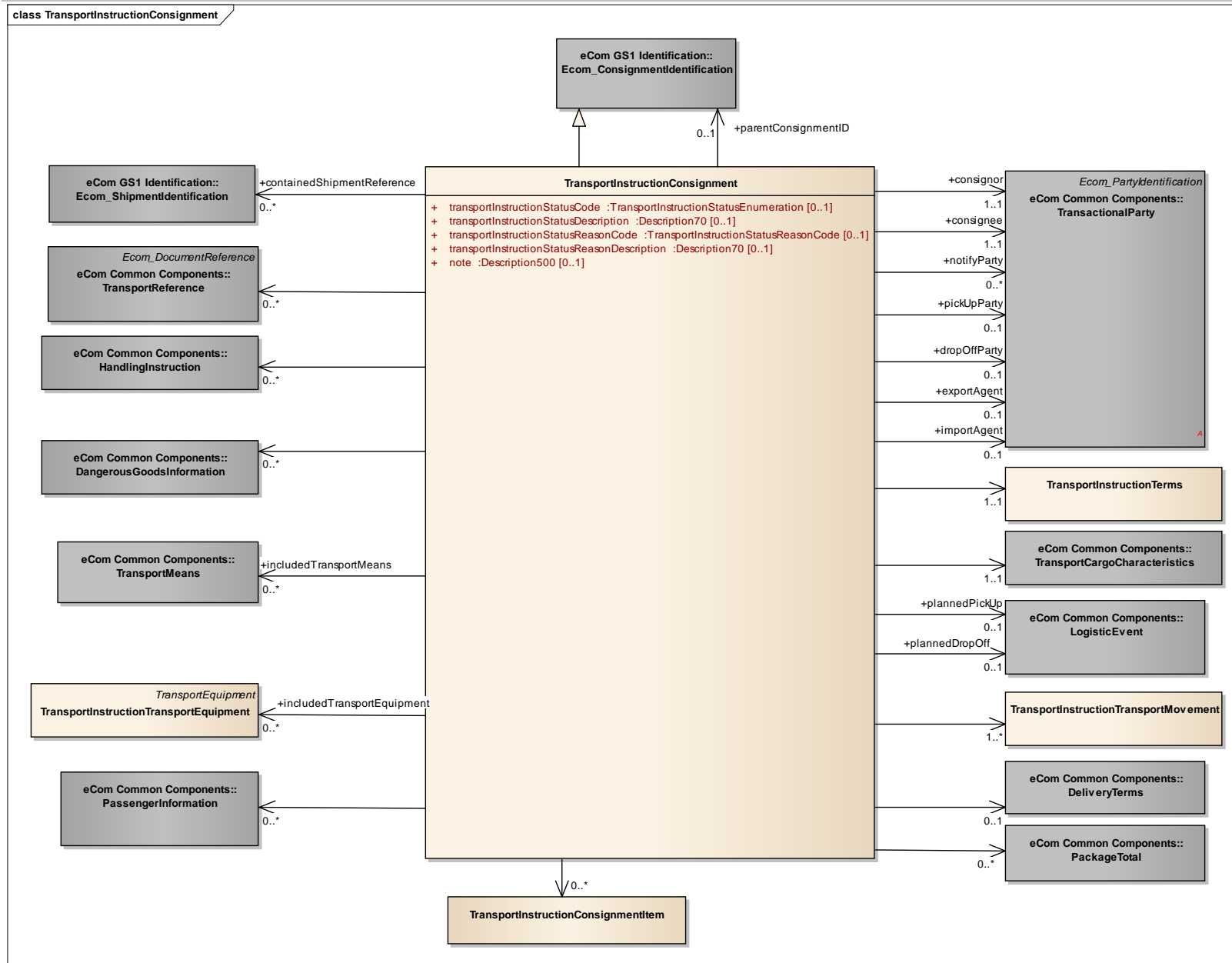


Note: Reference Shared Common Library Business Message (BMS) Release 3.3 and eCom Domain Common Library Business Message (BMS) Release 3.3 for all common information.



4.2 Transport Instruction Consignment

Class Diagram



**GDD Report**

The content of the TransportInstructionConsignment class, its structure and component definitions can be accessed in the Global Data Dictionary:
http://apps.gs1.org/GDD/bms/Version3_3/Pages/bieDetails.aspx?semanticURN=urn:gs1:gdd:bie:TransportInstructionConsignment

Content	Attribute / Role	Datatype / SecondaryClass	Multiplicity	Definition	Requirements
TransportInstructionConsignment				A consignment is a logical grouping of goods (one or more physical entities) that is intended to be transported as a whole from a consignor to a consignee by a carrier or freight forwarder via one or more modes of transport, subject to one single transport contract.	
Association	plannedDropOff	LogisticEvent	0..1	Details on the planned delivery of the consignment.	BRAD CON6, CON7 (LogisticLocation)
Association		TransportInstructionTransportMovement	1..*	The transport movement details for this consignment.	
Association	plannedPickUp	LogisticEvent	0..1	Details on the planned collection of the consignment.	BRAD CON6, CON7 (LogisticLocation)
Association		DeliveryTerms	0..1	The applicable legal, customs, financial and insurance terms that have been agreed for the delivery of the consignment.	BRAD CON10
Association		HandlingInstruction	0..*	Instruction on the way to treat the goods during transport and storage.	BRAD CON9
Association		PackageTotal	0..*	Aggregate information per type of package contained in the consignment.	BRAD CON18
Association	includedTransportEquipment	TransportInstructionTransportEquipment	0..*	Details on the transport equipment contained in the consignment.	
Association	consignee	TransactionalParty	1..1	The party receiving a consignment of goods.	BRAD CON1
Association		TransportReference	0..*	References to the commercial transaction or to transport or legal documents related to the consignment.	BRAD CON19
Association	parentConsignmentID	Ecom_ConsignmentIdentification	0..1	Reference to another consignment that contains this consignment (and several other consignments).	BRAD CON22 WR 15-000314



Transport Instruction and Response Business Message Standard (BMS)

Association		TransportCargoCharacteristics	1..1	Aggregate information on the goods that are contained in this consignment.	BRAD CON28
Association	containedShipmentReference	ShipmentIdentification	0..*	Reference to the shipment(s) contained in this consignment. #	
Association		TransportInstructionConsignmentItem	0..*	A line item included in this consignment of goods.#	
Association	notifyParty	TransactionalParty	0..*	The party which needs to be informed regarding the consignment information to fulfill the end to end transportation process.	BRAD CON2
Association	consignor	TransactionalParty	1..1	The party despatching a consignment of goods.	BRAD CON1
Association		TransportInstructionConsignment	0..*	Provides the information on a consignment contained in this transport instruction.	BRAD TransportInstruction-8, 12, 13
Association	includedTransportMeans	TransportMeans	0..*	Details on the transport means contained in the consignment, such as trucks being transported on a ferry.	
Association		DangerousGoodsInformation	0..*	Hazardous instructions for this consignment, such as where or how specified packages or containers are to be handled because of restriction from dangerous goods.	BRAD CON30
Generalization		Ecom_ConsignmentIdentification		The unique identifier for this consignment.	BRAD CON3 WR 15-000314
Association		PassengerInformation	0..*		
Association	exportAgent	TransactionalParty	0..1	The party acting as an agent for, or on behalf of, the consignor with respect to the customs export procedures for this consignment.	BRAD TM: additional requirement during design phase.
Association		TransportInstructionConsignment	0..*	Provides the information on a consignment contained in this transport instruction response.	BRAD TransportInstructionConfirmation-1, 10, 11, 12, 13, 19
Association	dropOffParty	TransactionalParty	0..1	Identification of the physical location to where goods will be or have been shipped.	BRAD CON1
Association	pickUpParty	TransactionalParty	0..1	Identification of the physical location from where goods will be picked up for delivery.	BRAD CON1



Transport Instruction and Response Business Message Standard (BMS)

Association	importAgent	TransactionalParty	0..1	The party acting as an agent for, or on behalf of, the consignee with respect to the customs import procedures for this consignment. #	BRAD TM: additional requirement during design phase.
Association		TransportInstructionTerms	1..1	The agreed transport service conditions for this consignment.	
Attribute	transportInstructionStatusCode	TransportInstructionStatusEnumeration	0..1	Code specifying the instruction status of this consignment.	BRAD TransportInstructionConfirmation-8
Attribute	transportInstructionStatusDescription	Description70	0..1	Textual description of the instruction status of this consignment. #	BRAD TransportInstructionConfirmation-8
Attribute	transportInstructionStatusReasonCode	TransportInstructionStatusReasonCode	0..1	Code specifying the instruction status reason for this consignment.	BRAD TransportInstructionConfirmation-8
Attribute	transportInstructionStatusReasonDescription	Description70	0..1	Textual description of the instruction status reason for this consignment.	BRAD TransportInstructionConfirmation-8
Attribute	note	Description500	0..1	Free text used to convey information that is not processed by applications. Only meant to present the information to a user as on a screen, in a browser, etc.	BRAD RQ 09.236.F

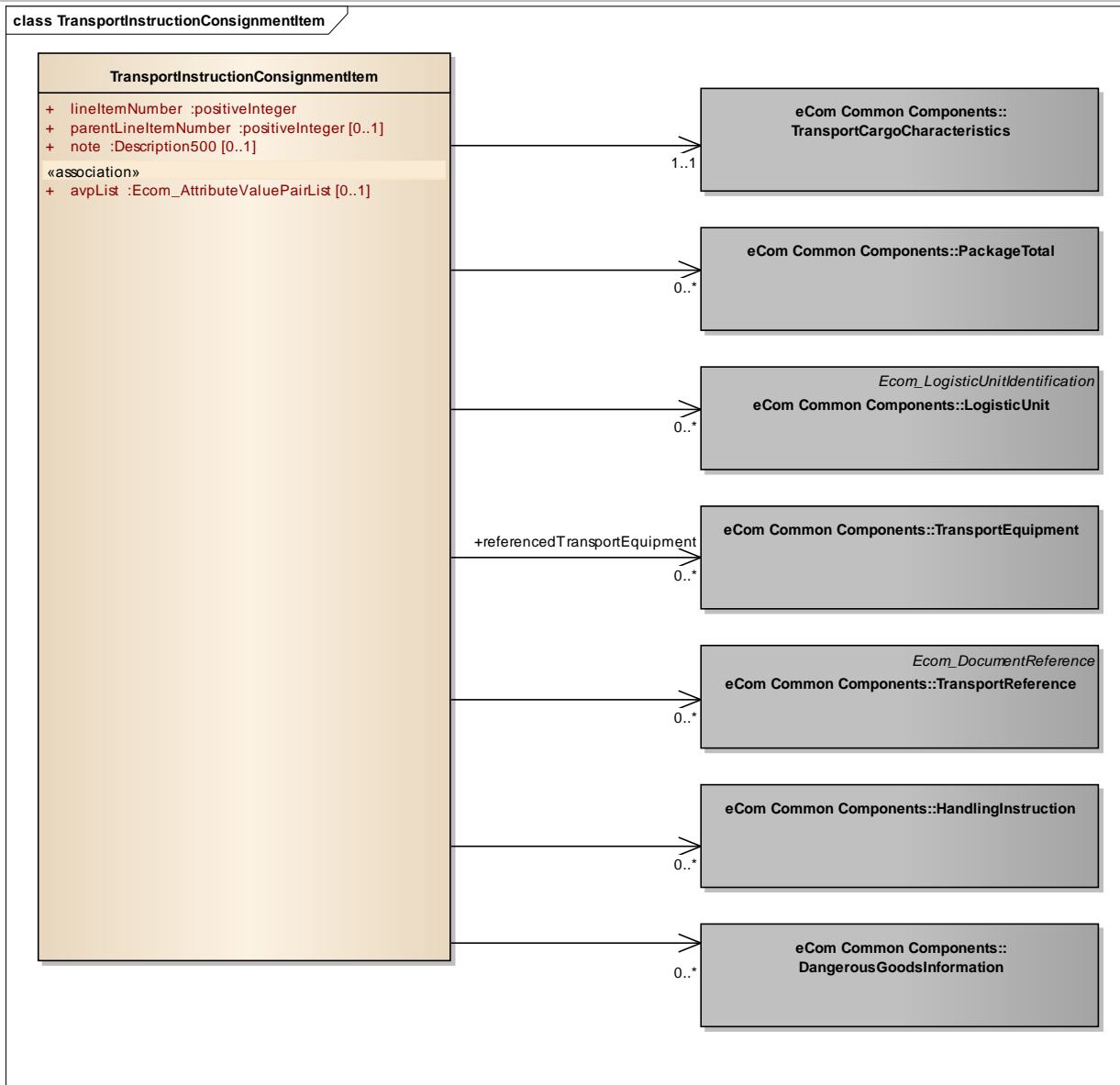


Note: Reference Shared Common Library Business Message (BMS) Release 3.3 and eCom Domain Common Library Business Message (BMS) Release 3.3 for all common information.



4.3 Transport Instruction Consignment Item

Class Diagram



**GDD Report**

The content of the TransportInstructionConsignmentItem class, its structure and component definitions can be accessed in the Global Data Dictionary: http://apps.gs1.org/GDD/bms/Version3_3/Pages/bieDetails.aspx?semanticURN=urn:gs1:gdd:bie:TransportInstructionConsignmentItem

Content	Attribute / Role	Datatype / Secondaryclass	Multiplicity	Definition	Requirements
TransportInstructionConsignmentItem				A <u>consignment item</u> is a (collection of) Load Units that can be identified (uniquely) within the consignment and may be treated/handled in the same way during transportation (and associated administrative processes).	
Association		PackageTotal	0..*	Aggregate information per type of package included in the consignment item.	BRAD CIT11
Association	referencedTransportEquipment	TransportEquipment	0..*	Identification of the transport equipment that contains the consignment item.	
Association		TransportCargoCharacteristics	1..1	Aggregate information on the goods that are included in this consignment item.	
Association		TransportReference	0..*	References to the commercial transaction or to transport or legal documents related to the consignment item.	BRAD CIT9
Association		LogisticUnit	0..*	Information on the logistic unit(s) included in the consignment item.	
Association		DangerousGoodsInformation	0..*	Hazardous instructions for this consignment item, such as where or how specified packages or containers are to be handled because of restriction from dangerous goods.	BRAD CIT7
Association		HandlingInstruction	0..*	Handling instructions for the consignment item.	BRAD CIT6, CIT8
Attribute	lineItemNumber	positiveInteger	1..1	The sequence number for this consignment item.	BRAD CIT3
Attribute	parentLineItemNumber	positiveInteger	0..1	The number of line item containing information about the parent of the current item. It allows establishing hierarchical link between the two items.	WR 14-000021 WR 14-000044

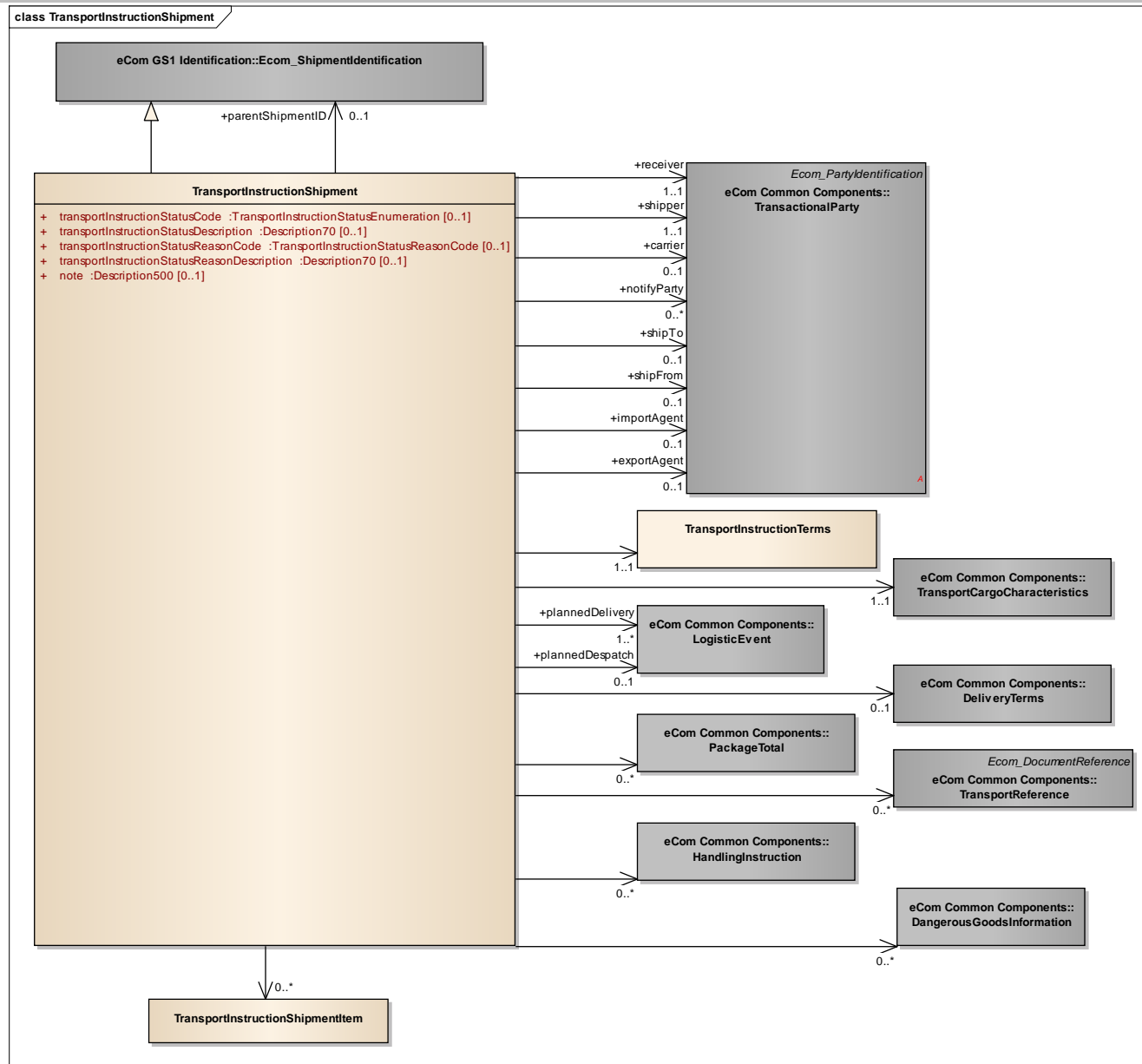
Content	Attribute / Role	Datatype / Secondaryclass	Multiplicity	Definition	Requirements
Attribute	note	Description500	0..1	Free text used to convey information that is not processed by applications. Only meant to present the information to a user as on a screen, in a browser, etc.	BRAD RQ 09.236.F
Attribute	avpList	Ecom_AttributeValue PairList	0..1	Temporary attributes introduced between minor versions.	WR 14-000110



Note: Reference Shared Common Library Business Message (BMS) Release 3.3 and eCom Domain Common Library Business Message (BMS) Release 3.3 for all common information.

4.4 Transport Instruction Shipment

Class Diagram



**GDD Report**

The content of the TransportInstructionShipment class, its structure and component definitions can be accessed in the Global Data Dictionary:
http://apps.gs1.org/GDD/bms/Version3_3/Pages/bieDetails.aspx?semanticURN=urn:gs1:gdd:bie:TransportInstructionShipment

Content	Attribute / Role	Datatype / Secondaryclass	Multiplicity	Definition	Requirements
TransportInstructionShipment				A <u>shipment</u> is an identifiable collection of one or more Trade Items available to be transported together from the shipper (Original Consignor/Shipper), to the receiver (Final/Ultimate Consignee). Typically the shipment is the entity communicated between trading partners in the Despatch and Receiving Advice.	
Association	receiver	TransactionalParty	1..1	A party which engages in receiving this shipment of goods.	BRAD SHM1
Association		TransportInstructionShipmentItem	0..*	A line item included in this shipment of goods. #	
Association		HandlingInstruction	0..*	Instruction on the way to treat the goods during transport and storage. #	BRAD SHM7
Association	notifyParty	TransactionalParty	0..*	The party which needs to be informed regarding the shipment to fulfill the end to end transportation process. #	BRAD SHM20
Association	plannedDespatch	LogisticEvent	0..1	Details on the planned despatch of the shipment.	BRAD SHM10, SHM11 (LogisticLocation)
Generalization		Ecom_ShipmentIdentification		The unique identifier for this shipment.	BRAD SHM4 WR 15-000314
Association		DeliveryTerms	0..1	The applicable legal, customs, financial and insurance terms that have been agreed for the delivery of the shipment.	BRAD SHM27
Association	parentShipmentID	Ecom_ShipmentIdentification	0..1	Reference to a shipment that contains this shipment (and several other shipments). #	BRAD SHM17 WR 15-000314
Association	shipFrom	TransactionalParty	0..1	The physical location from where goods will be or have been shipped.	BRAD SHM1
Association		TransportInstructionShipment	0..*	Provides the information on a shipment contained in this transport instruction.	BRAD TransportInstruction-8, 9, 10, 11, 15
Association	shipper	TransactionalParty	1..1	A party which engages in shipping this shipment of goods;	BRAD SHM1

Content	Attribute / Role	Datatype / Secondaryclass	Multiplicity	Definition	Requirements
Association	importAgent	TransactionalParty	0..1	The party acting as an agent for, or on behalf of, the consignee with respect to the customs import procedures for this shipment. #	BRAD TM: additional requirement during design phase.
Association		DangerousGoodsInformation	0..*	Hazardous instructions for this shipment, such as where or how specified packages or containers are to be handled because of restriction from dangerous goods.	BRAD SHM8
Association	carrier	TransactionalParty	0..1	A party that physically transports goods from one place to another.	BRAD SHM3
Association	plannedDelivery	LogisticEvent	1..*	Details on the planned delivery of the shipment.	BRAD SHM10, SHM11 (LogisticLocation) WR 15-000244
Association		TransportReference	0..*	References to the commercial transaction or to transport and legal documents related to the shipment.	BRAD SHM16
Association		PackageTotal	0..*	Aggregate information per type of package contained in the shipment.	BRAD SHM19
Association		TransportInstructionShipment	0..*	Provides the information on a shipment contained in this transport instruction response.	BRAD TransportInstructionConfirmation-1, 15, 16
Association	exportAgent	TransactionalParty	0..1	The party acting as an agent for, or on behalf of, the consignor with respect to the customs export procedures for this shipment. #	BRAD TM: additional requirement during design phase.
Association	shipTo	TransactionalParty	0..1	The physical location to where goods will be or have been shipped.	BRAD SHM1
Association		TransportCargoCharacteristics	1..1	Aggregate information on the goods that are contained in this shipment.	
Association		TransportInstructionTerms	1..1	The agreed transport service conditions for this shipment.	
Attribute	transportInstructionStatusCode	TransportInstructionStatusEnumeration	0..1	Code specifying the instruction status of this shipment. #	BRAD TransportInstructionConfirmation-9

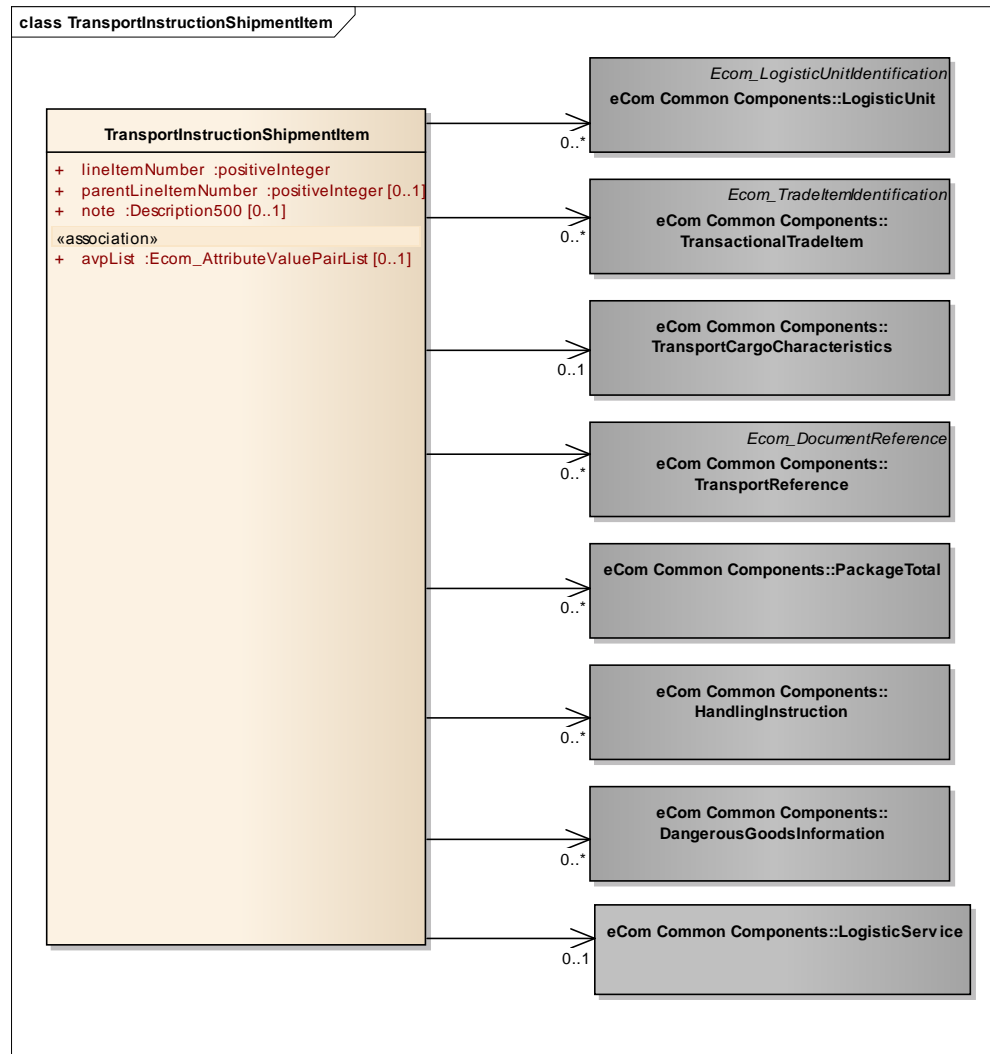
Content	Attribute / Role	Datatype / Secondaryclass	Multiplicity	Definition	Requirements
Attribute	transportInstructionStatusDescription	Description70	0..1	Textual description of the instruction status of this shipment. #	BRAD TransportInstructionConfirmation-9
Attribute	transportInstructionStatusReasonCode	TransportInstructionStatusReasonCode	0..1	Code specifying the instruction status reason for this shipment.	BRAD TransportInstructionConfirmation-9
Attribute	transportInstructionStatusReasonDescription	Description70	0..1	Textual description of the instruction status reason for this shipment. #	BRAD TransportInstructionConfirmation-9
Attribute	note	Description500	0..1	Free text used to convey information that is not processed by applications. Only meant to present the information to a user as on a screen, in a browser, etc.	BRAD RQ 09.236.F



Note: Reference Shared Common Library Business Message (BMS) Release 3.3 and eCom Domain Common Library Business Message (BMS) Release 3.3 for all common information.

4.5 Transport Instruction Shipment Item

Class Diagram



**GDD Report**

The content of the TransportInstructionShipmentItem class, its structure and component definitions can be accessed in the Global Data Dictionary:

http://apps.gs1.org/GDD/bms/Version3_3/Pages/bieDetails.aspx?semanticURN=urn:gs1:gdd:bie:TransportInstructionShipmentItem

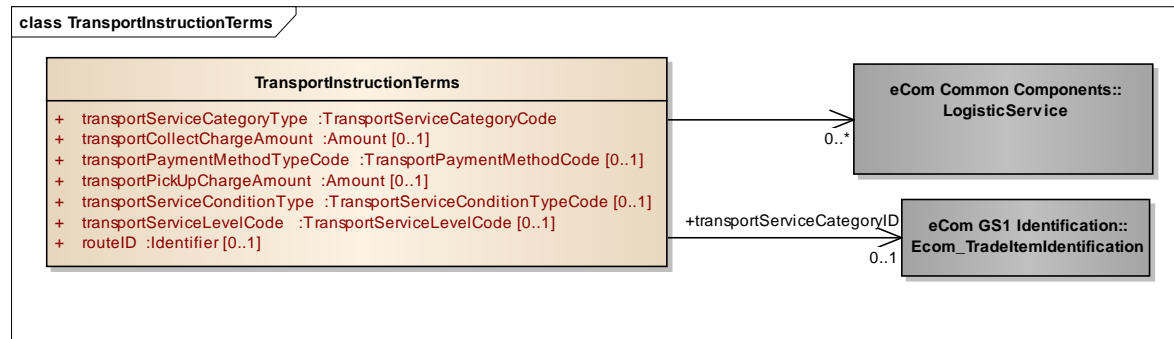
Content	Attribute / Role	Datatype / Secondaryclass	Multiplicity	Definition	Requirements
TransportInstructionShipmentItem				A <u>shipment item</u> is a (collection of) Trade Items and/or Logistic Units that can each be identified (uniquely) within a shipment.	
Association		HandlingInstruction	0..*	Handling instructions for the consignment item.	BRAD SHI6, SHI19
Association		TransportCargoCharacteristics	0..1	Aggregate information on the goods that are included in this shipment item.	
Association		PackageTotal	0..*	Aggregate information per type of package included in the shipment item.	BRAD SHI9, SHI13
Association		TransactionalTradeItem	0..*	Information on the trade item(s) included in the shipment item.	BRAD SHI1, SHI3, SHI5, SHI16, SHI17
Association		TransportReference	0..*	References to the commercial transaction or to transport or legal documents related to the shipment item.	BRAD SHI8
Association		LogisticUnit	0..*	Information on the logistic unit(s) included in the shipment item.	BRAD SHI1, SHI18
Association		DangerousGoodsInformation	0..*	Hazardous instructions for this shipment item, such as where or how specified packages or containers are to be handled because of restriction from dangerous goods.	BRAD SHI7
Association		LogisticService	0..1	Service requested from a logistic services provider.	WR 15-000100
Attribute	lineItemNumber	positiveInteger	1..1	The sequence number for this shipment item.	BRAD SHI2
Attribute	parentLineItemNumber	positiveInteger	0..1	The number of line item containing information about the parent of the current item. It allows establishing hierarchical link between the two items.	WR 14-000021 WR 14-000044
Attribute	note	Description500	0..1	Free text used to convey information that is not processed by applications. Only meant to present the information to a user as on a screen, in a browser, etc.	BRAD RQ 09.236.F
Attribute	avpList	Ecom_AttributeValuePairList	0..1	Temporary attributes introduced between minor versions.	WR 14-000110



Note: Reference Shared Common Library Business Message (BMS) Release 3.3 and eCom Domain Common Library Business Message (BMS) Release 3.3 for all common information.

4.6 Transport Instruction Terms

Class Diagram



GDD Report

The content of the TransportInstructionTerms class, its structure and component definitions can be accessed in the Global Data Dictionary:

http://apps.gs1.org/GDD/bms/Version3_3/Pages/bieDetails.aspx?semanticURN=urn:gs1:gdd:bie:TransportInstructionTerms

Content	Datatype / Secondaryclass	Attribute / Role	Multiplicity	Definition	Requirements
TransportInstru tionTerms				Information on the commercial conditions under which the requested transport services will be performed.	
Association	LogisticService		0..*	Details on the additional services agreed as part of the transport instruction terms.	
Attribute	TransportServic eCategoryCode	transportServiceCateg oryType	1..1	Code specifying the type of transport service that will be provided. For example: Courier service.	BRAD CON29, SHM26, SHM3
Attribute	Amount	transportCollectCharg eAmount	0..1	The total monetary value of all freight and other service charges which are to be collected from the consignee at or after delivery of the goods.	BRAD CON20
Attribute	TransportPaym entMethodCode	transportPaymentMeth odTypeCode	0..1	Code specifying the method of payment for the transport and service charges.	BRAD CON11, SHM5
Attribute	Amount	transportPickUpCharg eAmount	0..1	The total monetary value of all freight and other service charges which are to be collected from the consignor at or after pick-up of the goods.	BRAD CON20



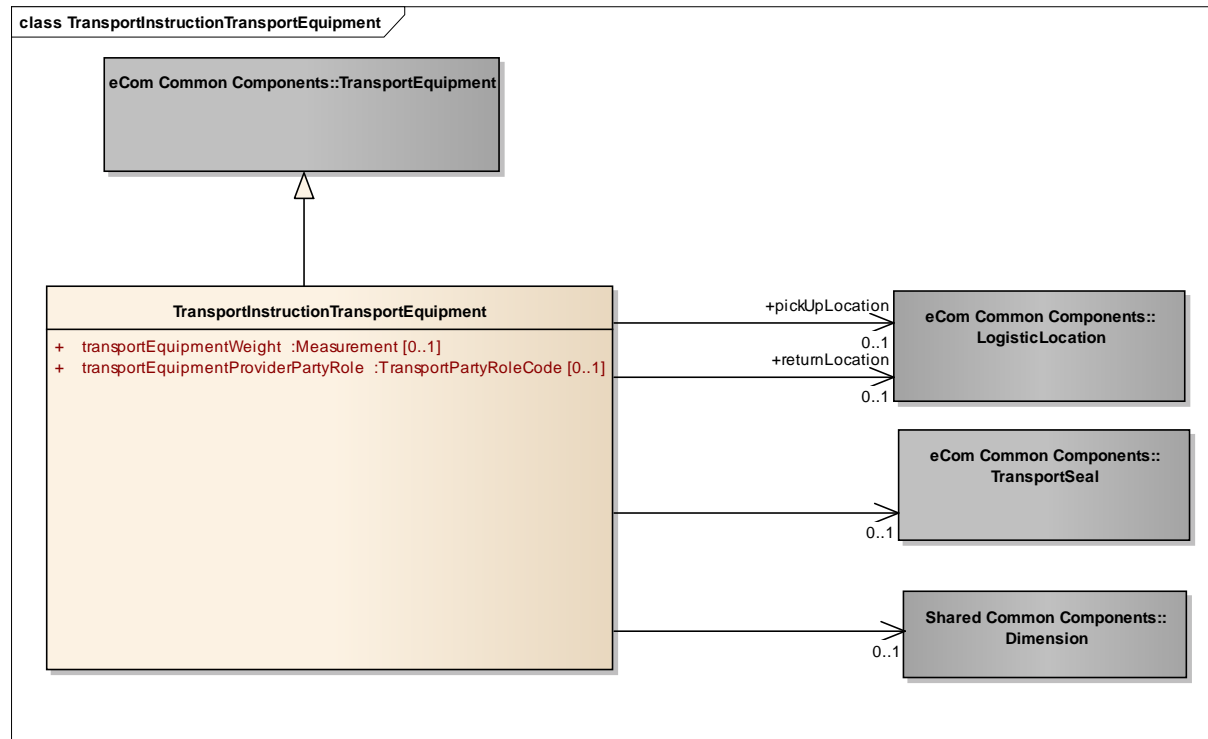
Content	Datatype / Secondaryclass	Attribute / Role	Multiplicity	Definition	Requirements
Attribute	TransportServiceConditionTypeCode	transportServiceConditionType	0..1	Code specifying the type of contractual conditions applicable to these transport terms.	BRAD CON29, SHM26
Attribute	TransportServiceLevelCode	transportServiceLevelCode	0..1	Code specifying the service level requested for the transport service. For example: Express service.	BRAD CON29, SHM26
Attribute	Identifier	routeID	0..1	Unique identifier of the standard route that will be used for this shipment.	WR 12-000202
Association	transportServiceCategoryID	Ecom_TradeItemIdentification	0..1	Uniquely identifies transport service category.	



Note: Reference Shared Common Library Business Message (BMS) Release 3.3 and eCom Domain Common Library Business Message (BMS) Release 3.3 for all common information.

4.7 Transport Instruction Transport Equipment

Class Diagram



GDD Report

The content of the TransportInstructionTransportEquipment class, its structure and component definitions can be accessed in the Global Data Dictionary:

http://apps.gs1.org/GDD/bms/Version3_3/Pages/bieDetails.aspx?semanticURN=urn:gs1:gdd:bie:TransportInstructionTransportEquipment

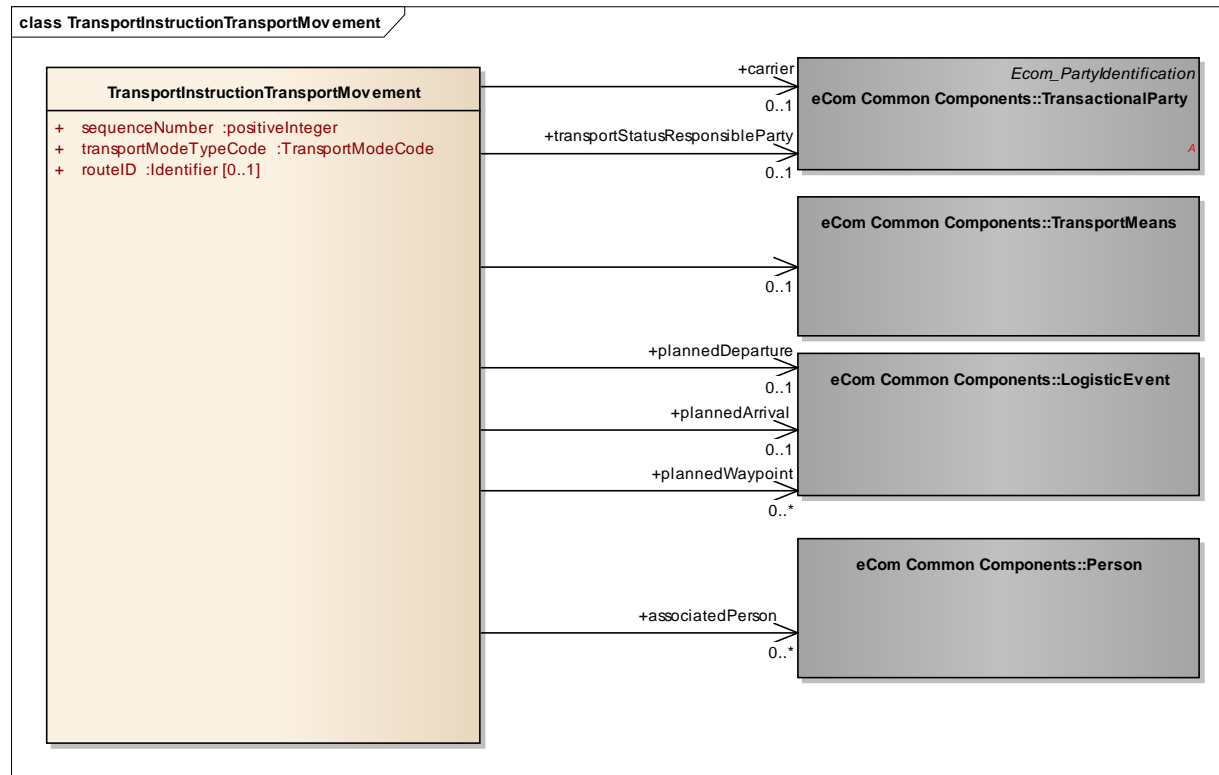
Content	Attribute / Role	Datatype / Secondaryclass	Multiplicity	Definition	Requirements
TransportInstructionTransportEquipment				<u>Transport equipment</u> is a piece of equipment used to hold, protect or secure cargo for logistics purposes. Transport Equipment is to be moved using Transport Means.	
Association		TransportSeal	0..1	Details on the seal affixed to this piece of transport equipment.	
Association	returnLocation	LogisticLocation	0..1	The physical location to where the equipment will be returned.	BRAD TEQ6
Association	pickUpLocation	LogisticLocation	0..1	The physical location from where the equipment will be collected.	BRAD TEQ5
Association		Dimension	0..1	The linear dimensions of this type of transport equipment.	
Generalization		TransportEquipment		Provides the generic identification details for the transport equipment.	
Attribute	transportEquipmentWeight	Measurement	0..1	A measure of the mass of this type of transport equipment.	
Attribute	transportEquipmentProviderPartyRole	TransportPartyRoleCode	0..1	The code specifying the role of the party responsible for supplying this piece of logistics transport equipment.	BRAD TEQ3



Note: Reference Shared Common Library Business Message (BMS) Release 3.3 and eCom Domain Common Library Business Message (BMS) Release 3.3 for all common information.

4.8 Transport Instruction Transport Movement

Class Diagram



**GDD Report**

The content of the TransportInstructionTransportMovement class, its structure and component definitions can be accessed in the Global Data Dictionary: http://apps.gs1.org/GDD/bms/Version3_3/Pages/bieDetails.aspx?semanticURN=urn:gs1:gdd:bie:TransportInstructionTransportMovement

Content	Attribute/Role	Datatype/Secondary class	Multiplicity	Definition	Requirements
TransportInstructionTransportMovement				The <u>transport movement</u> information specifies details of the movement of goods such as mode and means of transport, locations, departure, and arrival date(s) and time(s).	
Association	associatedPerson	Person	0..*	The name and/or identification of an individual associated with this transport movement.	BRAD TMV9
Association	plannedWaypoint	LogisticEvent	0..*	An administrative procedure taking place at a specific location that may have an effect on the lead time of a transport movement, such as dangerous goods handling, customs clearance, ...	
Association		TransportMeans	0..1	The type of vehicle, aircraft, vessel or other device used for the transport of goods in this transport movement	TMV19, TME1, TME2, TME3
Association	plannedArrival	LogisticEvent	0..1	The date, time, date time, or other date time value that the given party expects the means of transport for this transport movement to arrive at the designated arrival location.	BRAD TMV7, 13
Association	plannedDeparture	LogisticEvent	0..1	The date, time, date time, or other date time value that the given party expects the means of transport for this transport movement to depart from the designated departure location.	BRAD TMV6, TMV12
Association	carrier	TransactionalParty	0..1	A party that physically transports goods from one place to another.	BRAD TMV5
Association	transportStatusResponsibleParty	TransactionalParty	0..1	Party in charge of collecting and forwarding the information about the transport movement.	BRAD TMV17, TMV18
Attribute	sequenceNumber	positiveInteger	1..1	Unique number identifying the sequence of this transport movement with respect to the other specified movements.	
Attribute	transportModeTypeCode	TransportModeCode	1..1	Code specifying the transportation mode used for this transport movement.	BRAD TMV2
Attribute	routeID	Identifier	0..1	Unique identifier of the standard route that will be used for this transport movement.	BRAD TMV8



Note: Reference Shared Common Library Business Message (BMS) Release 3.3 and eCom Domain Common Library Business Message (BMS) Release 3.3 for all common information.

4.9 Enumerations (message specific)

Not applicable

4.10 Code Lists

Class	Codelist	GDD Link
TransportInstruction	TransportInstructionFunctionEnumeration	http://apps.gs1.org/GDD/Pages/clDetails.aspx?semanticURN=urn:gs1:gdd:cl:TransportInstructionFunctionEnumeration
TransportInstructionResponse	TransportInstructionResponseTypeEnumeration	http://apps.gs1.org/GDD/Pages/clDetails.aspx?semanticURN=urn:gs1:gdd:cl:TransportInstructionResponseTypeEnumeration
TransportInstructionConsignment, TransportInstructionShipment	TransportInstructionStatusEnumeration	http://apps.gs1.org/GDD/Pages/clDetails.aspx?semanticURN=urn:gs1:gdd:cl:TransportInstructionStatusEnumeration
TransportInstructionConsignment, TransportInstructionShipment	TransportInstructionStatusReasonCode	http://apps.gs1.org/GDD/Pages/clDetails.aspx?semanticURN=urn:gs1:gdd:cl:TransportInstructionStatusReasonCode
TransportInstructionTerms	TransportServiceCategoryCode	http://apps.gs1.org/GDD/Pages/clDetails.aspx?semanticURN=urn:gs1:gdd:cl:TransportServiceCategoryCode
TransportInstructionTerms	TransportPaymentMethodCode	http://apps.gs1.org/GDD/Pages/clDetails.aspx?semanticURN=urn:gs1:gdd:cl:TransportPaymentMethodCode
TransportInstructionTerms	TransportServiceConditionTypeCode	http://apps.gs1.org/GDD/Pages/clDetails.aspx?semanticURN=urn:gs1:gdd:cl:TransportServiceConditionTypeCode
TransportInstructionTerms	TransportServiceLevelCode	http://apps.gs1.org/GDD/Pages/clDetails.aspx?semanticURN=urn:gs1:gdd:cl:TransportServiceLevelCode
TransportInstructionTransportEquipment	TransportPartyRoleCode	http://apps.gs1.org/GDD/Pages/clDetails.aspx?semanticURN=urn:gs1:gdd:cl:TransportPartyRoleCode
TransportInstructionTransportMovement	TransportModeCode	http://apps.gs1.org/GDD/Pages/clDetails.aspx?semanticURN=urn:gs1:gdd:cl:TransportModeCode



Note: Refer to the Global Data Dictionary (GDD) for the code values.

5 Business Message Examples

5.1 Example 1

Transport Instruction – Domestic, 1 consignment, 1 truck, with logistic units

Party Information

GS1 Global Location Number	Party Type
6665566156192	Logistic Service Buyer
4048623000003	Logistic Service Seller
6665566156192	Consignor
6660011234562	Consignee

Message Example 1

Attribute	Value
TransportInstruction	
creationDateTime	2011-01-12T12:00:00
documentStatusCode	ORIGINAL
transportInstructionFunction	CONSIGNMENT
EntityIdentification (+transportInstructionIdentification)	
uniqueCreatorIdentification	TRINS00001
TransactionalParty (+logisticServicesSeller)	
gln	4048623000003
TransactionalParty (+logisticServicesBuyer)	
gln	6665566156192
TransportInstructionConsignment	
ConsignmentIdentification	
ginc	6665566156191234567
TransactionalParty (+consignor)	
gln	6665566156192
TransactionalParty (+consignee)	
gln	6660011234562
TransportInstructionTerms	
transportServiceCategoryType	30
TransportCargoCharacteristics	
cargoTypeCode	21
cargoTypeDescription	General cargo (EN)
totalGrossVolume	3.5 (CBM)
totalGrossWeight	1500 (KGM)
totalPackageQuantity	5
TransportInstructionTransportMovement	
sequenceNumber	1

Attribute	Value
transportModeTypeCode	30
LogisticEvent (+plannedDeparture)	
DateOptionalTime (+logisticEventDateTime)	
date	2011-01-14
LogisticLocation	
Address	
city	Stockholm
LogisticEvent (+plannedArrival)	
LogisticLocation	
Address	
city	Lund
PackageTotal	
packageTypeCode	201
totalPackageQuantity	3
PackageTotal	
packageTypeCode	211
totalPackageQuantity	2
TransportInstructionConsignmentItem	
lineItemNumber	1
TransportCargoCharacteristics	
cargoTypeCode	21
cargoTypeDescription	Furniture (EN)
LogisticUnit (*)	
sscc	666655661561900011
packageTypeCode	201
LogisticUnit (*)	
sscc	666655661561920026
packageTypeCode	201
LogisticUnit (*)	
sscc	666655661561920033
packageTypeCode	201
LogisticUnit (*)	
sscc	3666655661561920040
packageTypeCode	211
LogisticUnit (*)	
sscc	666655661561920057
packageTypeCode	211

5.2 Example 2

Transport Instruction Response– Domestic, 1 consignment, 1 truck, with logistic units

Message Example 2

Attribute	Value
TransportInstructionResponse	
creationDateTime	2011-01-13T12:00:00
documentStatusCode	ORIGINAL
responseType	FULLY_ACCEPTED_WITH_AMENDMENTS
EntityIdentification (+transportInstructionResponseIdentification)	
uniqueCreatorIdentification	TRINR00001
TransactionalParty (+logisticServicesSeller)	
gln	4048623000003
TransactionalParty (+logisticServicesBuyer)	
gln	6665566156192
DocumentReference (+transportInstruction)	
uniqueCreatorIdentification	TRINS00001
TransportInstructionConsignment	
ginc	6665566156191234567
TransactionalParty (+consignor)	
gln	6665566156192
TransactionalParty (+consignee)	
gln	6660011234562
TransportInstructionTerms	
transportServiceCategoryType	30
TransportCargoCharacteristics	
cargoTypeCode	21
cargoTypeDescription	General cargo (EN)
totalGrossVolume	3.5 (CBM)
totalGrossWeight	1500 (KGM)
totalPackageQuantity	5
TransportInstructionTransportMovement	
sequenceNumber	1
transportModeTypeCode	30
TransactionalParty (+carrier)	
gln	4048623000003
LogisticEvent (+plannedDeparture)	
LogisticLocation	
Address	
city	Stockholm
DateOptionalTime (+logisticEventDateTime)	
date	2011-01-14

Attribute	Value
time	08:00:00
LogisticEvent (+plannedArrival)	
LogisticLocation	
Address	
city	Lund
DateOptionalTime (+logisticEventDateTime)	
date	2011-01-14
time	17:00:00
PackageTotal	
packageTypeCode	201
totalPackageQuantity	3
PackageTotal	
packageTypeCode	211
totalPackageQuantity	2
TransportInstructionConsignmentItem	
lineItemNumber	1
TransportCargoCharacteristics	
cargoTypeCode	21
cargoTypeDescription	Furniture (EN)
LogisticUnit (*)	
sscc	666655661561900011
packageTypeCode	201
LogisticUnit (*)	
sscc	666655661561920026
packageTypeCode	201
LogisticUnit (*)	
sscc	666655661561920033
packageTypeCode	201
LogisticUnit (*)	
sscc	3666655661561920040
packageTypeCode	211
LogisticUnit (*)	
sscc	666655661561920057
packageTypeCode	211

5.3 Example 3

Transport Instruction – Domestic, 1 shipment, 1 truck, with logistic units

Message Example 3

Attribute	Value
TransportInstruction	
creationDateTime	2011-01-12T12:00:00
documentStatus	ORIGINAL
transportInstructionFunction	SHIPMENT
EntityIdentification (+transportInstructionIdentification)	
uniqueCreatorIdentification	TRINS00002
TransactionalParty (+logisticServicesSeller)	
gln	4048623000003
TransactionalParty (+logisticServicesBuyer)	
gln	6665566156192
TransportInstructionShipment	
gsin	66655661561920123
TransactionalParty (+receiver)	
gln	6660011234562
TransactionalParty (+shipper)	
gln	6665566156192
TransactionalParty (+shipTo)	
Address	
city	Lund
postalCode	22478
streetAddressOne	Glimmervägen 125
TransportInstructionTerms	
transportServiceCategoryType	30
TransportCargoCharacteristics	
cargoTypeCode	21
cargoTypeDescription	General cargo (EN)
totalGrossVolume	3.5 (CBM)
totalGrossWeight	1500 (KGM)
totalPackageQuantity	5
LogisticEvent (+plannedDelivery)	
DateOptionalTime (+logisticEventDateTime)	
date	2011-01-18
PackageTotal (*)	
packageTypeCode	201
totalPackageQuantity	3
PackageTotal (*)	
packageTypeCode	211
totalPackageQuantity	2

Attribute	Value
TransportInstructionShipment Item (*)	
lineItemNumber	1
LogisticUnit (*)	
sscc	666655661561900011
packageTypeCode	201
LogisticUnit (*)	
sscc	666655661561920026
packageTypeCode	201
LogisticUnit (*)	
sscc	666655661561920033
packageTypeCode	201
TransactionalTradeItem	
gtin	03736556615609
tradeItemQuantity	3
TransportInstructionShipment Item (*)	
lineItemNumber	2
LogisticUnit (*)	
sscc	3666655661561920040
packageTypeCode	211
tradeItemQuantity	10
LogisticUnit (*)	
sscc	666655661561920057
packageTypeCode	211
tradeItemQuantity	10
TransactionalTradeItem	
gtin	03736556615616
tradeItemQuantity	20

6 Implementation Considerations

6.1 User Guide

The Functional User Guide contains more information about the structure and content of the Transport Instruction and Response message: http://www.gs1.org/docs/ecom/xml/3/3.3/eCom-Trade_messages.html#TransportInstructionandResponse

6.2 Message Specific Considerations

Not applicable

7 Summary of Changes

Any change in the GS1 standards is done based on the Work Request (WR) submitted by the GS1 User Companies or Member Organisations. All Work Requests are documented in the Work Request system available on the GS1 website: <http://wr.gs1.org>. The system is accessible to registered users. New visitors need to register first, to be able to access it. WRs can be searched by the number referenced in tables below, see: Search Work Requests. The number starts with the two last digits of the year when it was submitted, followed by the consecutive number within that year.



Note: WRs submitted earlier than February 2012 should be searched in Old Change Requests.

7.1 BMS Release 3.0

First publication.

7.2 BMS Release 3.1

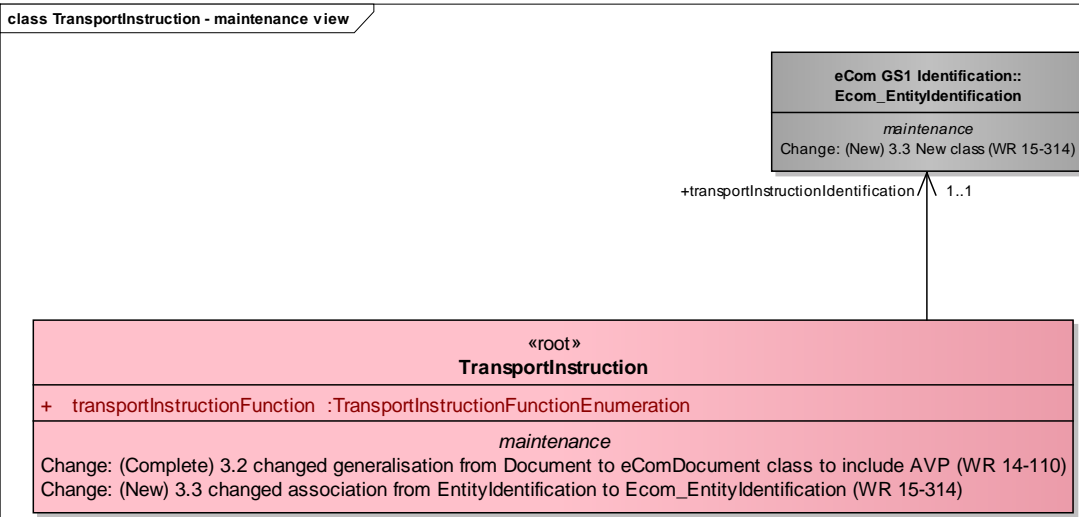
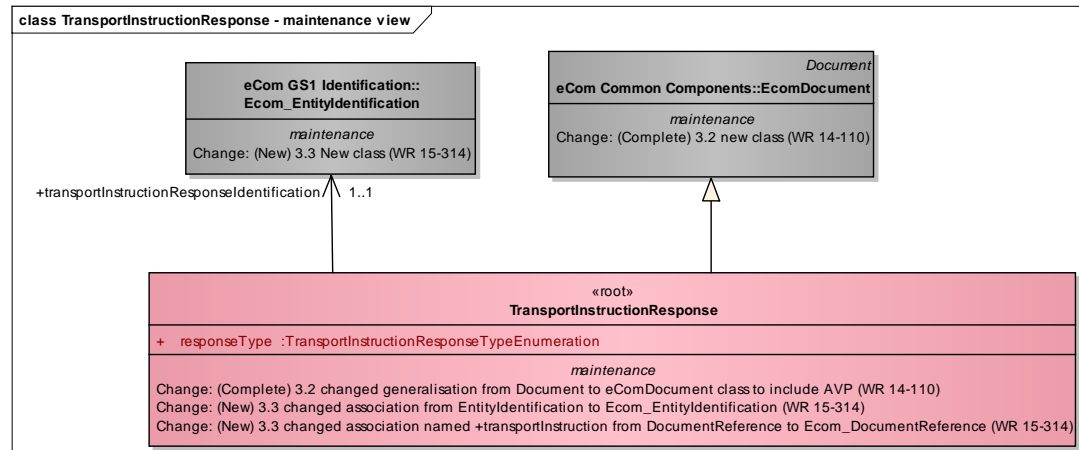
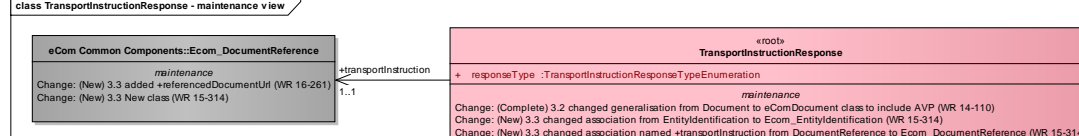
Change	Associated CR Number
<div> <div>class TransportInstructionTerms - maintenance view</div> <div> <div>TransportInstructionTerms</div> <div> + transportServiceCategoryType: TransportServiceCategoryCode + transportCollectChargeAmount: Amount [0..1] + transportPaymentMethodTypeCode: TransportPaymentMethodCode [0..1] + transportPickUpChargeAmount: Amount [0..1] + transportServiceConditionType: TransportServiceConditionTypeCode [0..1] + transportServiceLevelCode : TransportServiceLevelCode [0..1] + routeID: Identifier [0..1] </div> <div> <div>maintenance</div> <div>Change: (Verified) added routeID (WR 12-202)</div> </div> </div> </div>	WR 12-202

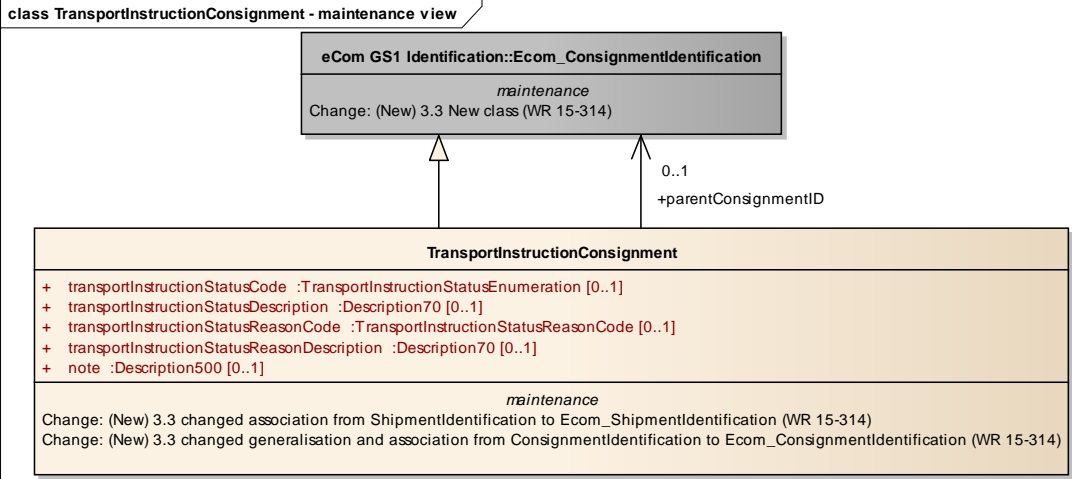
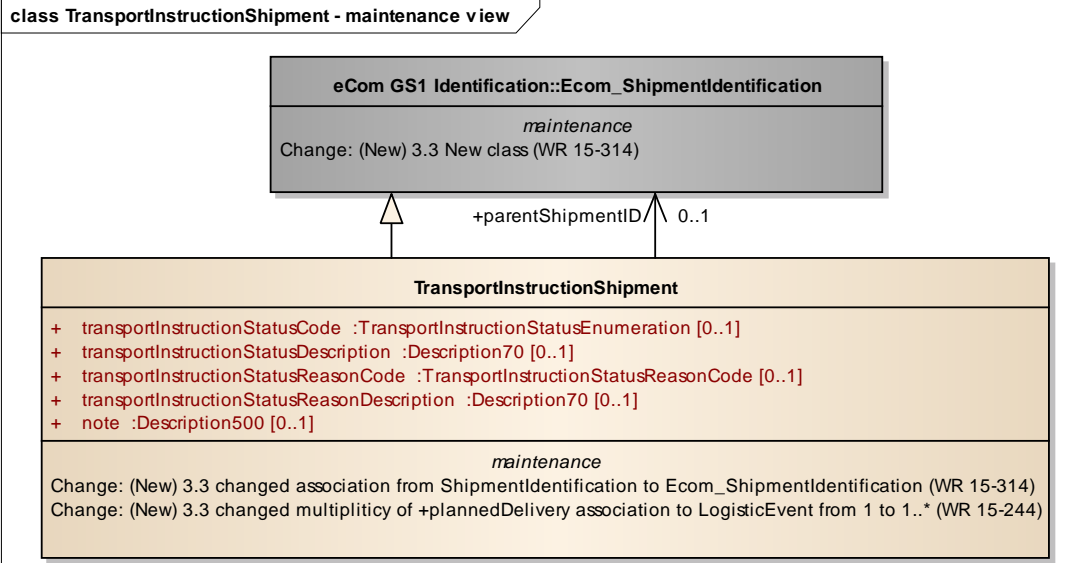
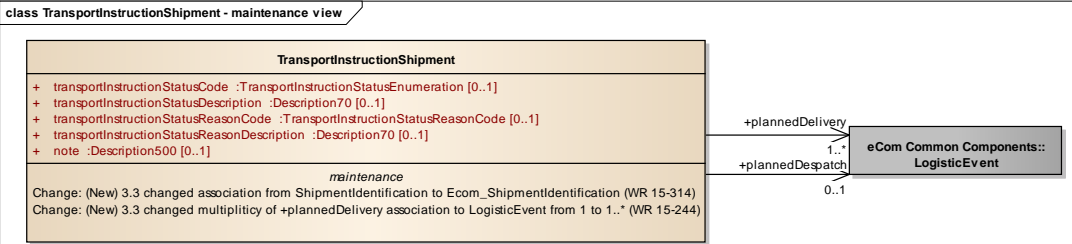
7.3 BMS Release 3.2

Change	Associated WR
<div>Added Attribute Value Pair at the root, line item and sub line item levels</div> <div> <div>class TransportInstruction - maintenance view</div> <div> <div>«root»</div> <div>TransportInstruction</div> <div> + transportInstructionFunction :TransportInstructionFunctionEnumeration </div> <div> <div>maintenance</div> <div>Change: (Verified) 3.2 changed generalisation from Document to eComDocument class to include AVP (WR 14-110)</div> </div> </div> </div>	14-000110
<div>Added Attribute Value Pair at the root, line item and sub line item levels</div> <div> <div>class TransportInstructionResponse - maintenance view</div> <div> <div>«root»</div> <div>TransportInstructionResponse</div> <div> + responseType :TransportInstructionResponseTypeEnumeration </div> <div> <div>maintenance</div> <div>Change: (Verified) 3.2 changed generalisation from Document to eComDocument class to include AVP (WR 14-110)</div> </div> </div> </div>	14-000110

Change	Associated WR
<ul style="list-style-type: none"> Added a reference to parent line number to all LineItem classes, to support hierarchical items. (WRs 14-021 & 14-044) Added Attribute Value Pair at the root, line item and sub line item levels (WR 14-110) <div> class TransportInstructionConsignmentItem - maintenance view <div> <div> TransportInstructionConsignmentItem </div> <div> + lineItemNumber :positiveInteger + parentLineItemNumber :positiveInteger [0..1] + note :Description500 [0..1] + «association» avpList :Ecom_AttributeValuePairList [0..1] </div> <div> <i>maintenance</i> Change: (Verified) 3.2 added +avpList (WR 14-110) Change: (Verified) 3.2 added +parentLineItemNumber (WR 14-021 & 14-044) </div> </div> </div>	14-000021 14-000044 14-000110
<ul style="list-style-type: none"> Added a reference to parent line number to all LineItem classes, to support hierarchical items. (WRs 14-021 & 14-044) Added Attribute Value Pair at the root, line item and sub line item levels (WR 14-110) <div> class TransportInstructionShipmentItem - maintenance view <div> <div> TransportInstructionShipmentItem </div> <div> + lineItemNumber :positiveInteger + parentLineItemNumber :positiveInteger [0..1] + note :Description500 [0..1] + «association» avpList :Ecom_AttributeValuePairList [0..1] </div> <div> <i>maintenance</i> Change: (Verified) 3.2 added +avpList (WR 14-110) Change: (Verified) 3.2 added +parentLineItemNumber (WR 14-021 & 14-044) </div> </div> </div>	14-000021 14-000044 14-000110

7.4 BMS Release 3.3

Change	Associated WR
<p>Created Ecom_EntityIdentification class and changed association from the previous EntityIdentification</p> <p>class TransportInstruction - maintenance view</p>  <p>«root» TransportInstruction</p> <p>+ transportInstructionFunction :TransportInstructionFunctionEnumeration</p> <p><i>maintenance</i></p> <p>Change: (Complete) 3.2 changed generalisation from Document to eComDocument class to include AVP (WR 14-110) Change: (New) 3.3 changed association from EntityIdentification to Ecom_EntityIdentification (WR 15-314)</p> <p>eCom GS1 Identification:: Ecom_EntityIdentification</p> <p><i>maintenance</i></p> <p>Change: (New) 3.3 New class (WR 15-314)</p> <p>+transportInstructionIdentification / 1..1</p>	<p>15-000314</p> <p>Make GS1 identification keys optional in GS1 EDI XML</p>
<p>Created Ecom_EntityIdentification class and changed association from the previous EntityIdentification</p> <p>class TransportInstructionResponse - maintenance view</p>  <p>«root» TransportInstructionResponse</p> <p>+ responseType :TransportInstructionResponseTypeEnumeration</p> <p><i>maintenance</i></p> <p>Change: (Complete) 3.2 changed generalisation from Document to eComDocument class to include AVP (WR 14-110) Change: (New) 3.3 changed association from EntityIdentification to Ecom_EntityIdentification (WR 15-314) Change: (New) 3.3 changed association named +transportInstruction from DocumentReference to Ecom_DocumentReference (WR 15-314)</p> <p>eCom GS1 Identification:: Ecom_EntityIdentification</p> <p><i>maintenance</i></p> <p>Change: (New) 3.3 New class (WR 15-314)</p> <p>+transportInstructionResponseIdentification / 1..1</p> <p>eCom Common Components::EcomDocument</p> <p><i>Document</i></p> <p><i>maintenance</i></p> <p>Change: (Complete) 3.2 new class (WR 14-110)</p>	<p>15-000314</p> <p>Make GS1 identification keys optional in GS1 EDI XML</p>
<p>Created Ecom_DocumentReference class and changed association from the previous DocumentReference</p> <p>class TransportInstructionResponse - maintenance view</p>  <p>«root» TransportInstructionResponse</p> <p>+ responseType :TransportInstructionResponseTypeEnumeration</p> <p><i>maintenance</i></p> <p>Change: (Complete) 3.2 changed generalisation from Document to eComDocument class to include AVP (WR 14-110) Change: (New) 3.3 changed association from EntityIdentification to Ecom_EntityIdentification (WR 15-314) Change: (New) 3.3 changed association named +transportInstruction from DocumentReference to Ecom_DocumentReference (WR 15-314)</p> <p>eCom Common Components::Ecom_DocumentReference</p> <p><i>maintenance</i></p> <p>Change: (New) 3.3 added +referencedDocumentUri (WR 16-261) Change: (New) 3.3 New class (WR 15-314)</p> <p>+transportInstruction / 1..1</p>	<p>15-000314</p> <p>Make GS1 identification keys optional in GS1 EDI XML</p>

Change	Associated WR
<p>Created Ecom_ConsignmentIdentification class and changed association and generalisation from the previous ConsignmentIdentification</p> <p>class TransportInstructionConsignment - maintenance view</p>  <p>Change: (New) 3.3 changed association from ShipmentIdentification to Ecom_ShipmentIdentification (WR 15-314) Change: (New) 3.3 changed generalisation and association from ConsignmentIdentification to Ecom_ConsignmentIdentification (WR 15-314)</p>	<p>15-000314</p> <p>Make GS1 identification keys optional in GS1 EDI XML</p>
<p>Created Ecom_ShipmentIdentification class and changed association and generalisation from the previous ShipmentIdentification</p> <p>class TransportInstructionShipment - maintenance view</p>  <p>Change: (New) 3.3 changed association from ShipmentIdentification to Ecom_ShipmentIdentification (WR 15-314) Change: (New) 3.3 changed multiplicity of +plannedDelivery association to LogisticEvent from 1 to 1..* (WR 15-244)</p>	<p>15-000314</p> <p>Make GS1 identification keys optional in GS1 EDI XML</p>
<p>Made plannedDelivery in TransportInstructionShipment class repeatable</p> <p>class TransportInstructionShipment - maintenance view</p>  <p>Change: (New) 3.3 changed association from ShipmentIdentification to Ecom_ShipmentIdentification (WR 15-314) Change: (New) 3.3 changed multiplicity of +plannedDelivery association to LogisticEvent from 1 to 1..* (WR 15-244)</p>	<p>15-000244</p> <p>Add a new planned delivery differentiation</p>

Change	Associated WR
<p>Added association to TradeItemIdentification class named transportServiceCategoryID in TransportInstructionTerms associated to TransportInstructionShipment</p> <p>class TransportInstructionShipmentItem - maintenance view</p> <pre> classDiagram class TransportInstructionShipmentItem { +lineItemNumber :positiveInteger +parentLineItemNumber :positiveInteger [0..1] +note :Description500 [0..1] <<association>> +avpList :Ecom_AttributeValuePairList [0..1] } class Ecom_Common_Components_LogisticService { maintenance } TransportInstructionShipmentItem "0..1" --> "0..1" Ecom_Common_Components_LogisticService </pre> <p>Change: (Complete) 3.2 added +avpList (WR 14-110) Change: (Complete) 3.2 added +parentLineItemNumber (WR 14-021 & 14-044) Change: (New) 3.3 added association to LogisticService (WR 15-100)</p>	<p>15-000100 Add transport service identification</p>
<p>Created Ecom_TradeItemIdentification class and changed association from the previous TradeItemIdentification</p> <p>class TransportInstructionTerms - maintenance view</p> <pre> classDiagram class TransportInstructionTerms { +transportServiceCategoryType :TransportServiceCategoryCode +transportCollectedChargeAmount :Amount [0..1] +transportPaymentMethodTypeCode :TransportPaymentMethodCode [0..1] +transportPickUpChargeAmount :Amount [0..1] +transportServiceConditionType :TransportServiceConditionTypeCode [0..1] +transportServiceLevelCode :TransportServiceLevelCode [0..1] +routeID :Identifier [0..1] } class Ecom_GS1_Identification_Ecom_TradeItemIdentification { maintenance } TransportInstructionTerms "0..1" --> "0..1" Ecom_GS1_Identification_Ecom_TradeItemIdentification : +transportServiceCategoryID </pre> <p>Change: (Complete) 3.1 added routeID (WR 12-202) Change: (New) 3.3 added association to Ecom_TradeItemIdentification named +transportServiceCategoryID (WR 15-100)</p>	<p>15-000314 Make GS1 identification keys optional in GS1 EDI XML</p>

8 Appendices

Not Applicable

9 Acknowledgements

9.1.1 Work Group

Function	Name	Company / organisation
Co-chair	Rossner (Pottier), Natascha	GS1 France
Co-chair	Schmidt, Tom Eric	August Storck KG
Member	Bemrose, Jonathan	R&R Ice Cream
Member	Bodemer, Petra	dm-drogerie markt GmbH + Co. KG
Member	Boikanyo, Rebone	GS1 South Africa / Consumer Goods Council of South Africa
Member	Canada, ON	M3B 3L1
Member	Carlson, Jim	General Mills, Inc.
Member	Chresta, Richard	GS1 Switzerland
Member	Cook, Don	Wal-Mart Stores, Inc.
Member	Cox, Marc	Philips Electronics N.V.
Member	Darnell, David	Systrends
Member	De Flou, Nele	GS1 Belgium & Luxembourg
Member	Dicks, Arne	GS1 Germany
Member	Duvinger, Karina	GS1 Sweden

Function	Name	Company / organisation
Member	Foerderer, Klaus	GS1 Germany
Member	Gathmann, Stefan	GS1 Ireland
Member	Grangard, Anders	GS1 Global Office
Member	Harpell, Eileen	GS1 Community Room Staff
Member	Hand, Phil	JDA Software
Member	Herregodts, Kurt	GS1 Belgium & Luxembourg
Member	Kempkes, Fred	Unilever N.V.
Member	Kernan, Brendan	GS1 Ireland
Member	Kidd, Robin	Nestle
Member	Krid, Anne-Claire	GS1 France
Member	Lanoue, Tom	General Mills, Inc.
Member	Laur, Rita	GS1 Canada
Member	Lenman, Mia	GS1 Sweden
Member	Lerch, Hanjoerg	METRO Group
Member	Moberg, Dale	Axway
Member	Montes de Oca, Alejandra	GS1 Mexico
Member	Ng, Ella	GS1 Australia
Member	Peelen, Esther	GS1 Netherlands
Member	Pelekies, Andreas	GS1 Germany
Member	Perrier, Patricia	GS1 France
Member	Przybilla, Christian	GS1 Germany
Member	Pujol, Xavier	GS1 Spain
Member	Racek, Greg	Wal-Mart Stores, Inc.
Member	Repetto, Mirko	GS1 Italy
Member	Robba, Steven	1WorldSync Holdings, Inc.
Member	Rosell, Pere	GS1 Spain
Member	Rosenberg, Steven	GS1 US
Member	Schmid, Sue	GS1 Australia
Member	Schneider, Christian	GS1 Switzerland
Member	Sehorz, Eugen	GS1 Austria
Member	Sharma, Vishal	General Mills, Inc.
Member	Shimazaki, Ayako	GS1 Japan
Member	Sion, Emilie	GS1 France
Member	Souza, Nadia	GS1 Brasil
Member	Strand, Roman	GS1 Germany
Member	Tan, Milton	GS1 Malaysia
Member	Tompsett, Simon	Waitrose
Member	Trelle, Ute	1WorldSync Holdings, Inc.
Member	Tse, Steve	GS1 Hong Kong
Member	Tyson, Betty	Knouse Foods Cooperative, Inc

Function	Name	Company / organisation
Member	Van den Bergh, Senne	GS1 Belgium & Luxembourg
Member	Van der Eijk, Pim	OASIS - Sonnenglanz Consulting BV
Member	Veldhuis, Saskia	Procter & Gamble Co.
Member	Welch, Shan	GS1 UK
Member	Westerkamp, Jan	GS1 Netherlands
Member	Wilson, Mary	GS1 US
Member	Windsperger, Bekki	Best Buy Co., Inc.
Member	Yang, Shaopeng	GS1 China
Member	Yusdiar, Dani	GS1 Indonesia
Member	Zwanziger, Greg	SUPERVALU

9.1.2 Development Team Members

Function	Name	Organisation
GSMP Process Lead	Jean-Luc Champion	GS1 Global Office
Technical Development Lead	Ewa Iwicka	GS1 Global Office
Peer Review	Mark Van Eeghem	GS1 Global Office