



The Global Language of Business

# Transport Capacity Booking and Response Business Message Standard (BMS)

*Release 3.3, Ratified, Mar 2017*



## Document Summary

| Document Item    | Current Value   |
|------------------|---|
| Document Name    | Transport Capacity Booking and Response Business Message Standard (BMS) |
| Document Date    | Mar 2017  |
| Document Version | 3.3   |
| Document Issue   | 1   |
| Document Status  | Ratified  |

## Work Request Reference

| Date of WR Submission to GSMP: | WR Submitter(s):  | Refer to Work Request (WR) Number(s): |
|--------------------------------|-------------------|---------------------------------------|
| 08-Jul-2009                    | DHL               | 09-000189                             |
| 25-Jun-2014                    | GS1 Global Office | 14-000110                             |

## Business Requirements Document (BRAD) Reference

| BRAD Title         | BRAD Issue Date | BRAD Version |
|--------------------|-----------------|--------------|
| Transport Planning | March 2011      | 1.0          |

## Document Change History

| Date of Change | Version           | Changed By      | Reason for Change | Summary of Change      |
|----------------|-------------------|-----------------|-------------------|------------------------|
| 12-Jan-2012    | BMS 3.0 – Issue 1 | Mark Van Eeghem | BMS Release 3.0   | See summary of changes |
| 01-May-2013    | BMS 3.1 – Issue 1 | Coen Janssen    | BMS Release 3.1   | See summary of changes |
| 15-Sep-2014    | BMS 3.2 – Issue 1 | Ewa Iwicka      | BMS Release 3.2   | See summary of changes |
| 01-Mar-2017    | BMS 3.3 – Issue 1 | Ewa Iwicka      | BMS Release 3.3   | See summary of changes |

## Disclaimer

GS1®, under its IP Policy, seeks to avoid uncertainty regarding intellectual property claims by requiring the participants in the Work Group that developed this **Transport Capacity Booking and Response Business Message Standard (BMS)** to agree to grant to GS1 members a royalty-free licence or a RAND licence to Necessary Claims, as that term is defined in the GS1 IP Policy. Furthermore, attention is drawn to the possibility that an implementation of one or more features of this Specification may be the subject of a patent or other intellectual property right that does not involve a Necessary Claim. Any such patent or other intellectual property right is not subject to the licencing obligations of GS1. Moreover, the agreement to grant licences provided under the GS1 IP Policy does not include IP rights and any claims of third parties who were not participants in the Work Group.

Accordingly, GS1 recommends that any organization developing an implementation designed to be in conformance with this Specification should determine whether there are any patents that may encompass a specific implementation that the



organisation is developing in compliance with the Specification and whether a licence under a patent or other intellectual property right is needed. Such a determination of a need for licencing should be made in view of the details of the specific system designed by the organisation in consultation with their own patent counsel.

THIS DOCUMENT IS PROVIDED "AS IS" WITH NO WARRANTIES WHATSOEVER, INCLUDING ANY WARRANTY OF MERCHANTABILITY, NONINFRINGEMENT, FITNESS FOR PARTICULAR PURPOSE, OR ANY WARRANTY OTHERWISE ARISING OUT OF THIS SPECIFICATION. GS1 disclaims all liability for any damages arising from use or misuse of this Standard, whether special, indirect, consequential, or compensatory damages, and including liability for infringement of any intellectual property rights, relating to use of information in or reliance upon this document.

GS1 retains the right to make changes to this document at any time, without notice. GS1 makes no warranty for the use of this document and assumes no responsibility for any errors which may appear in the document, nor does it make a commitment to update the information contained herein.

GS1 and the GS1 logo are registered trademarks of GS1 AISBL.

# Table of Contents

|          |   |           |
|----------|---|-----------|
| <b>1</b> | <b>Business Domain View .....</b>                                 | <b>5</b>  |
| 1.1      | Introduction .....  | 5         |
| 1.2      | References .....  | 5         |
| <b>2</b> | <b>Business Context .....</b>                                     | <b>5</b>  |
| <b>3</b> | <b>Business Transaction View .....</b>                            | <b>6</b>  |
| 3.1      | Business Transaction – Manage Transport Capacity Booking .....    | 6         |
| 3.2      | Business Transaction - Issue Transport Capacity Booking .....     | 7         |
| 3.3      | Business Transaction - Respond to Transport Capacity Booking..... | 7         |
| <b>4</b> | <b>Business Information View .....</b>                            | <b>9</b>  |
| 4.1      | Transport Capacity Booking .....                                  | 9         |
| 4.1.1    | Transport Capacity Booking Space Requirements.....                | 13        |
| 4.1.2    | Transport Capacity Booking Transport Movement.....                | 15        |
| 4.2      | Transport Capacity Booking Response.....                          | 17        |
| 4.3      | Enumerations (message specific) .....                             | 19        |
| 4.4      | Code Lists .....  | 19        |
| <b>5</b> | <b>Business Message Examples .....</b>                            | <b>19</b> |
| 5.1      | Example 1 .....   | 19        |
| 5.2      | Example 2 .....   | 21        |
| 5.3      | Example 3 .....   | 22        |
| <b>6</b> | <b>Implementation Considerations.....</b>                         | <b>22</b> |
| 6.1      | User Guide .....  | 22        |
| 6.2      | Message Specific Considerations .....                             | 23        |
| <b>7</b> | <b>Summary of Changes .....</b>                                   | <b>23</b> |
| 7.1      | BMS Release 3.0 .....   | 23        |
| 7.2      | BMS Release 3.1 .....   | 23        |
| 7.3      | BMS Release 3.2 .....   | 23        |
| 7.4      | BMS Release 3.3 .....   | 24        |
| <b>8</b> | <b>Appendices .....</b>   | <b>25</b> |
| <b>9</b> | <b>Acknowledgements.....</b>                                      | <b>25</b> |
| 9.1.1    | Work Group .....  | 25        |
| 9.1.2    | Development Team Members .....                                    | 27        |

# 1 Business Domain View

## 1.1 Introduction

### Message Definition

#### Transport Capacity Booking Message Definition

Transport Capacity Booking is the process to reserve space for estimated consignments or shipments. Typically the booking process covers a period of less than a week prior to actual shipments covered by capacity booking moving through the Logistics Network. The Logistic Services Buyer will send transport capacity booking requests to the Logistic Services Seller.

#### Transport Capacity Response Message Definition

The Transport Capacity Booking Response is sent by the Logistic Services Seller to the Logistic Services Buyer, accepting or rejecting the Transport Capacity Booking.

### Principles

Capacity booking requests are used to reserve space *prior to the goods being ready for despatch*. At the point that the goods are actually ready to be moved and have been assigned a shipment or consignment identification, the Transport Execution process begins with the Transport Instruction message. The Transport Execution process is supported by separate Business Message Standards.

In cases where the Logistic Services Buyer and Logistic Services Seller share capacity forecasts, the capacity booking process will be used to drive the short-term Capacity Planning process of the Logistic Services Seller based on more detailed information from the Logistic Services Buyer in terms of quantities (volume, weights, pallets, trucks, etc..) than was shared during the capacity forecasting process. In this case the booking process "consumes" the long-term reservation of capacity expressed in the forecast. If all runs well, the total long-term forecasted capacity for the period should be close to the total capacity booked in the short-term capacity booking process for the same period. The forecasting process is supported by separate Business Message Standards.

## 1.2 References

| Reference Name                               | Description   |
|--|---|
| BRAD Transport Planning (GS1, 2011)          |   |
| Logistics Interoperability Model (GS1, 2007) |   |
| BMS eCom Domain Common Library Release 3.3   | The documented design of components that are used in multiple messages within the eCom domain.          |
| BMS Shared Common Library Release 3.3        | The documented design of components that are used in multiple messages within the eCom domain and GDSN. |

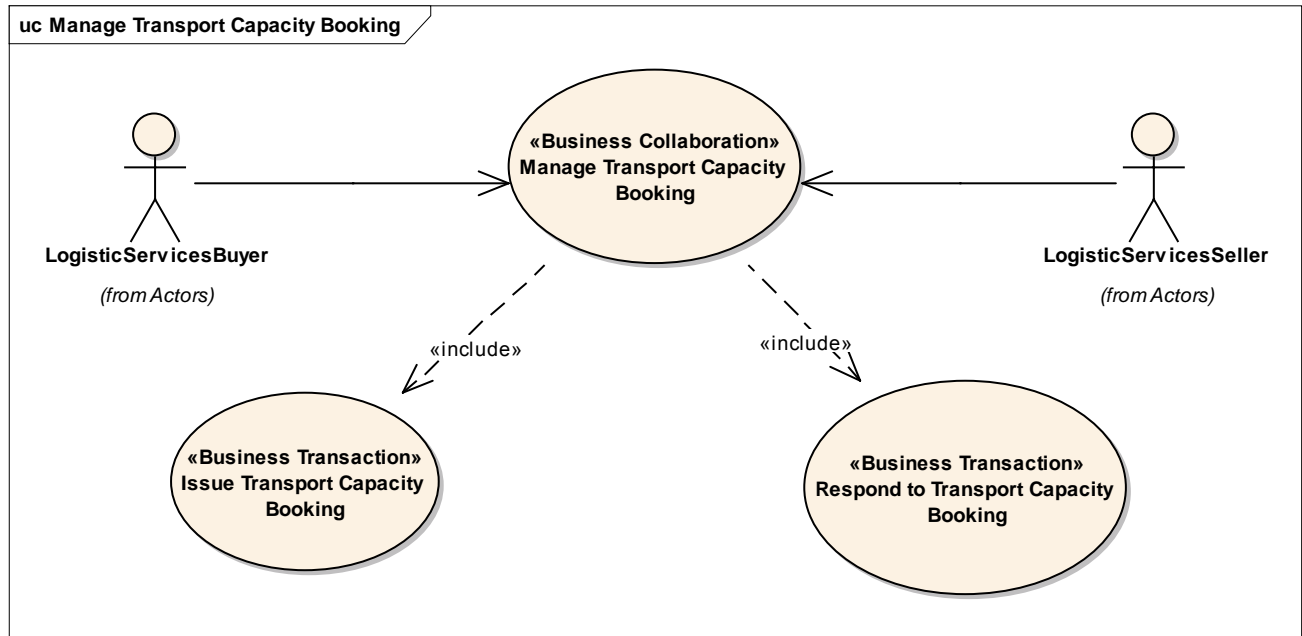
# 2 Business Context

| Context Category     | Value(s)             |
|----------------------|----------------------|
| Industry             | All                  |
| Geopolitical         | All                  |
| Product              | All                  |
| Process              | Transport Management |
| System Capabilities  | GS1 System           |
| Official Constraints | None                 |

## 3 Business Transaction View

### 3.1 Business Transaction – Manage Transport Capacity Booking

#### Use Case Diagram



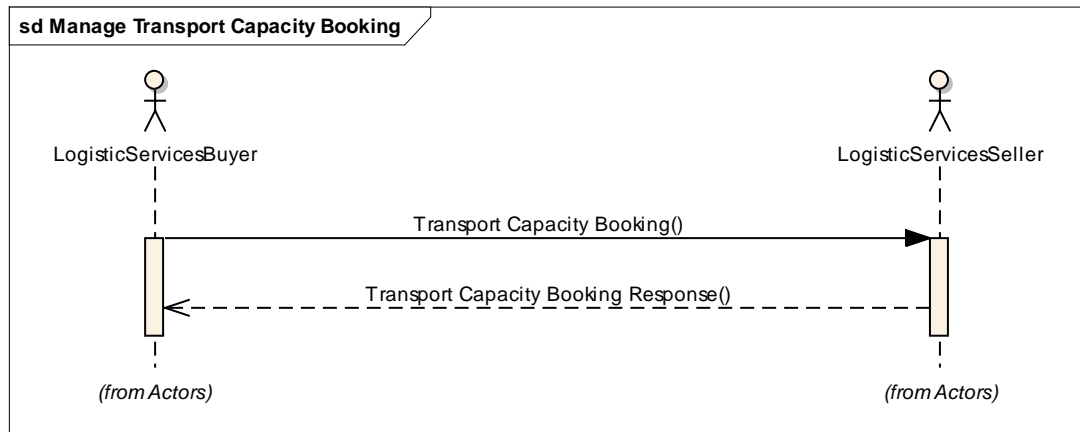
#### Use Case Description

| Use Case ID          | UC-2  |
|----------------------|---|
| Use Case Name        | Manage Transport Capacity Booking   |
| Use Case Description | The Logistic Services Buyer (LSB) requests the Logistics Services Seller (LSS) to reserve space on a means of transport for goods items to be transported together. The LSS may accept the booking, conditionally accept the booking, or reject the booking.  |
| Actors (Goal)        | Logistic Services Buyer (LSB)<br>Logistic Services Seller (LSS)   |
| Performance Goals    |   |
| Preconditions        | The LSB and LSS have a relationship.<br>The LSB has plans for goods items to be transported and knows: <ul style="list-style-type: none"> <li>■ The mode of transport</li> <li>■ The type of means of transport</li> </ul>  |
| Post conditions      | The LSB and LSS may or may not have a commercial agreement on the requested space booking.<br>An agreement has been made between the LSB and the LSS as to whether or not final transport instructions and/or transport arrangements are required and what will be the next steps to take in either case.           |
| Scenario             | The Logistics Service Buyer sends a request to the Logistic Service Seller to make a reservation for space for movement of goods items.<br>The LSS checks the availability of space for the requested booking on the means of transport and either confirms the space booking or does not accept the space booking. |
| Alternative Scenario |   |

### Activity Diagram(s)

Not applicable

### Sequence Diagram(s)



## 3.2 Business Transaction - Issue Transport Capacity Booking

| Use Case ID          | UC-2A  |
|----------------------|--|
| Use Case Name        | Issue Transport Capacity Booking   |
| Use Case Description | The Logistic Services Buyer requests the Logistic Services Seller to reserve space on a means of transport for goods items to be transported together.                   |
| Actors (Goal)        | Logistic Services Buyer (LSB)<br>Logistic Services Seller (LSS)  |
| Performance Goals    |  |
| Preconditions        | The LSB has goods items to be transported and knows: <ul style="list-style-type: none"> <li>■ The mode of transport</li> <li>■ The type of means of transport</li> </ul> |
| Post conditions      | The LSS receives a booking request.  |
| Scenario             | The LSB sends a request to the LSS to reserve space on a means of transport for goods items to be transported together.  |
| Alternative Scenario |  |

## 3.3 Business Transaction - Respond to Transport Capacity Booking

| Use Case ID          | UC-2B   |
|----------------------|---|
| Use Case Name        | Respond to Transport Capacity Booking   |
| Use Case Description | The Logistic Services Seller confirms space booking or does not accept the space booking  |
| Actors (Goal)        | Logistic Services Buyer (LSB)<br>Logistic Services Seller (LSS)   |
| Performance Goals    |   |
| Preconditions        | The LSB and LSS have a relationship.<br>The LSB has submitted a booking request to the LSS.<br>In their interoperation agreement the LSB and LSS have agreed to use a response as mandatory step in the transport capacity booking process. |

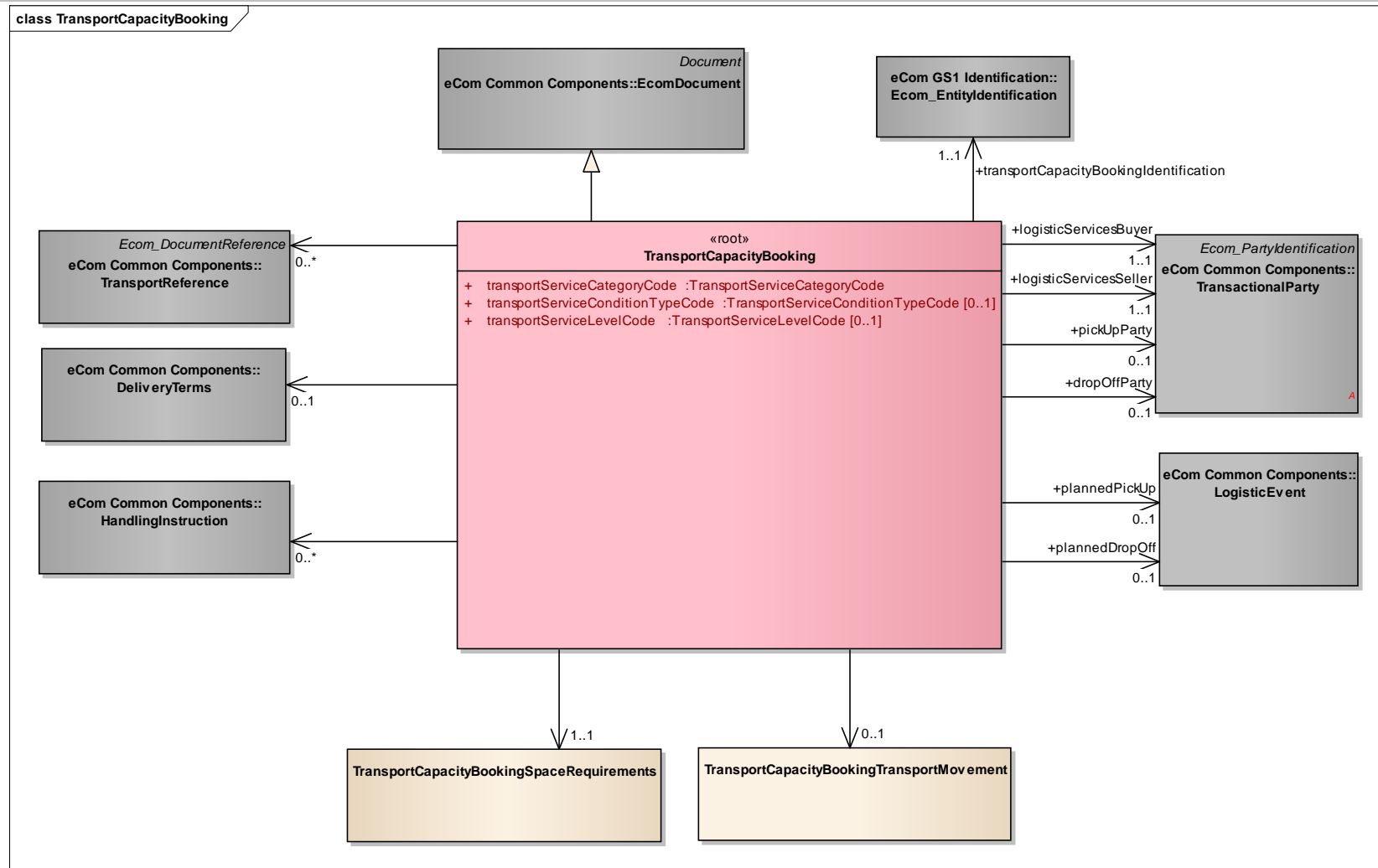
| Use Case ID          | UC-2B  |
|----------------------|--|
| Post conditions      | <p>The LSB and LSS may or may not have a commercial agreement on the requested space booking.</p> <p>An agreement has been made between the LSB and the LSS on the next steps.</p>                                   |
| Scenario             | <p>The LSS checks availability of the requested space booking on the means of transport and either confirms the space booking or does not accept the space booking</p> <p>The LSS sends the response to the LSB.</p> |
| Alternative Scenario |  |



## **4 Business Information View**

### **4.1 Transport Capacity Booking**

**Class diagram**



## GDD report

The content of the TransportCapacityBooking class, its structure and component definitions can be accessed in the Global Data Dictionary: [http://apps.gs1.org/GDD/bms/Version3\\_3/Pages/bieDetails.aspx?semanticURN=urn:gs1:gdd:bie:TransportCapacityBookingSpaceRequirements](http://apps.gs1.org/GDD/bms/Version3_3/Pages/bieDetails.aspx?semanticURN=urn:gs1:gdd:bie:TransportCapacityBookingSpaceRequirements)

| Content                  | Attribute / Role        | Datatype / Secondaryclass                 | Multiplicity | Definition   | Requirements                         |
|--------------------------|-------------------------|---|--------------|--|--------------------------------------|
| TransportCapacityBooking |                         |   |              | The Transport Capacity Booking is sent by the Logistic Services Buyer to the Logistic Services Seller, to reserve transport resources for estimated consignments or shipments. |                                      |
| Association              | plannedDropOff          | LogisticEvent                             | 0..1         | Details on the planned delivery of the goods.  | BRAD Transport Planning - BKH8       |
| Generalization           |                         | EcomDocument                              |              | Basic information about the content of the message including version number, creation date and time.   | BRAD Transport Planning - BKH2, BKH3 |
| Association              |                         | DeliveryTerms                             | 0..1         | The applicable legal, customs, financial and insurance terms that have been agreed for a goods delivery.   | BRAD Transport Planning - BKH11      |
| Association              | pickUpParty             | TransactionalParty                        | 0..1         | The party where the goods will be collected.   | BRAD Transport Planning - BKH6, BKH7 |
| Association              | logisticServices Seller | TransactionalParty                        | 1..1         | A party that provides logistics services to another party.   | BRAD Transport Planning - BKH5       |
| Association              |                         | TransportCapacityBookingTransportMovement | 0..1         | Details for the booked movement of the goods   | BRAD Transport Planning - BKH14      |
| Association              |                         | HandlingInstruction                       | 0..*         | Instructions on the way to treat the goods during transport and storage.   | BRAD Transport Planning - BKH9       |
| Association              |                         | TransportReference                        | 0..*         | References to associated information in support of related business processes. For example: purchase order number, bank account number.  | BRAD Transport Planning - BKH10      |
| Association              | plannedPickUp           | LogisticEvent                             | 0..1         | Details on the planned collection of the goods.  | BRAD Transport Planning - BKH8       |
| Association              | dropOffParty            | TransactionalParty                        | 0..1         | The party where the goods will be delivered.   | BRAD Transport Planning - BKH6, BKH7 |
| Association              | logisticServices Buyer  | TransactionalParty                        | 1..1         | A party that purchases logistics services from another party.  | BRAD Transport Planning - BKH4       |

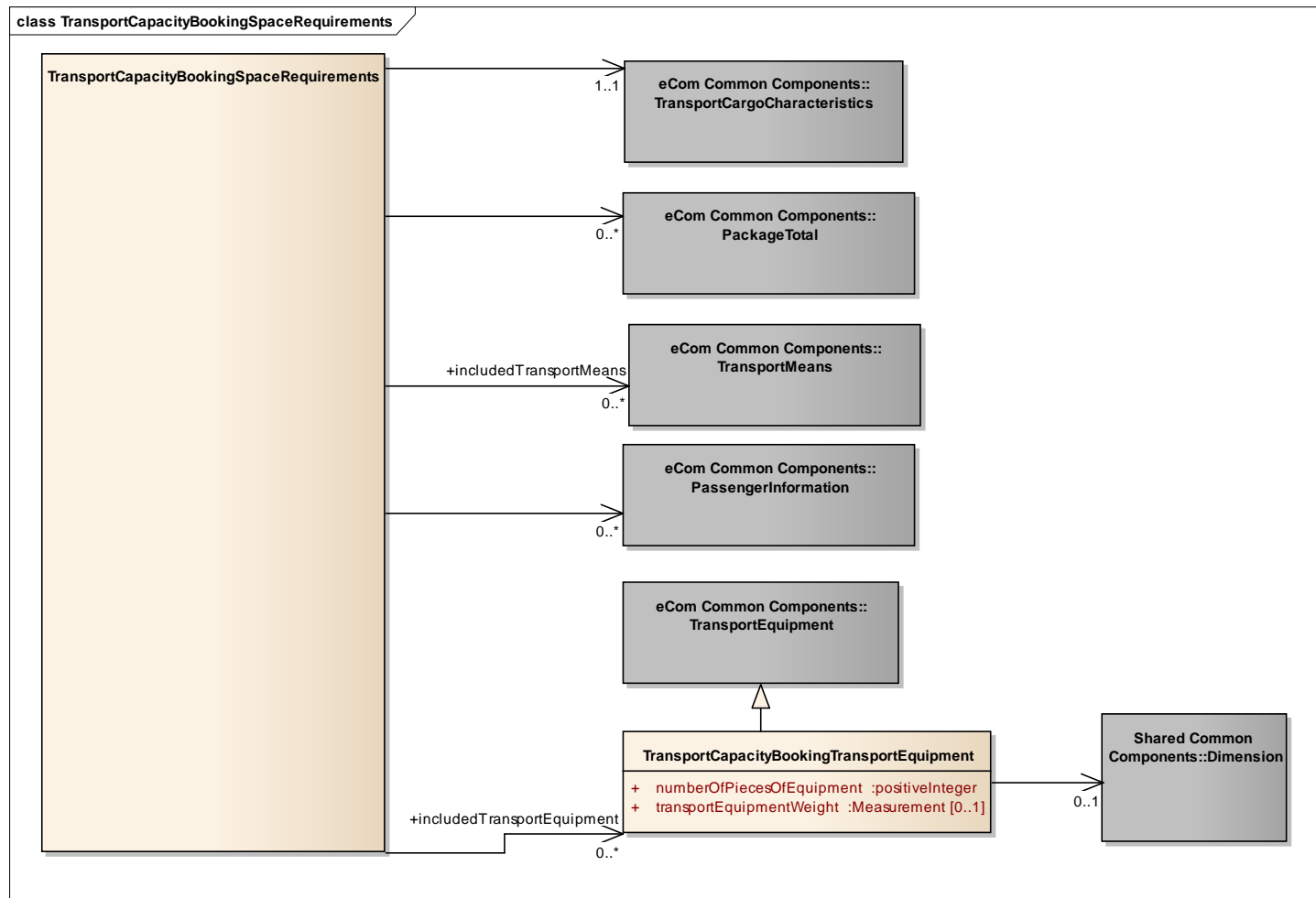
| Content     | Attribute / Role                       | Datatype / Secondaryclass                 | Multiplicity | Definition   | Requirements                                |
|-------------|--|---|--------------|--|---|
| Association | transportCapacityBookingIdentification | Ecom_EntityIdentification                 | 1..1         | The identification of the transport capacity booking document.   | BRAD Transport Planning - BKH1 WR 15-000340 |
| Association |  | TransportCapacityBookingSpaceRequirements | 1..1         | Details on the booked transport space, such as volume, weight, transport equipment.                                | BRAD Transport Planning - BKH13             |
| Attribute   | transportServiceCategoryCode           | TransportServiceCategoryCode              | 1..1         | Code specifying the type of transport service that will be provided. For example: Courier service.                 | BRAD Transport Planning - BKH12             |
| Attribute   | transportServiceConditionTypeCode      | TransportServiceConditionTypeCode         | 0..1         | Code specifying the type of contractual conditions applicable to the transport service. For example: Port to port. | BRAD Transport Planning - BKH12             |
| Attribute   | transportServiceLevelCode              | TransportServiceLevelCode                 | 0..1         | Code specifying the service level requested for the transport service. For example: Express service.               | BRAD Transport Planning - BKH12             |



**Note:** Reference Shared Common Library Business Message (BMS) Release 3.3 and eCom Domain Common Library Business Message (BMS) Release 3.3 for all common information.

## 4.1.1 Transport Capacity Booking Space Requirements

### Class Diagram



## GDD Report

The content of the TransportCapacityBookingSpaceRequirements class, its structure and component definitions can be accessed in the Global Data Dictionary:

[http://apps.gs1.org/GDD/bms/Version3\\_3/Pages/bieDetails.aspx?semanticURN=urn:gs1:gdd:bie:TransportCapacityBookingSpaceRequirements](http://apps.gs1.org/GDD/bms/Version3_3/Pages/bieDetails.aspx?semanticURN=urn:gs1:gdd:bie:TransportCapacityBookingSpaceRequirements)

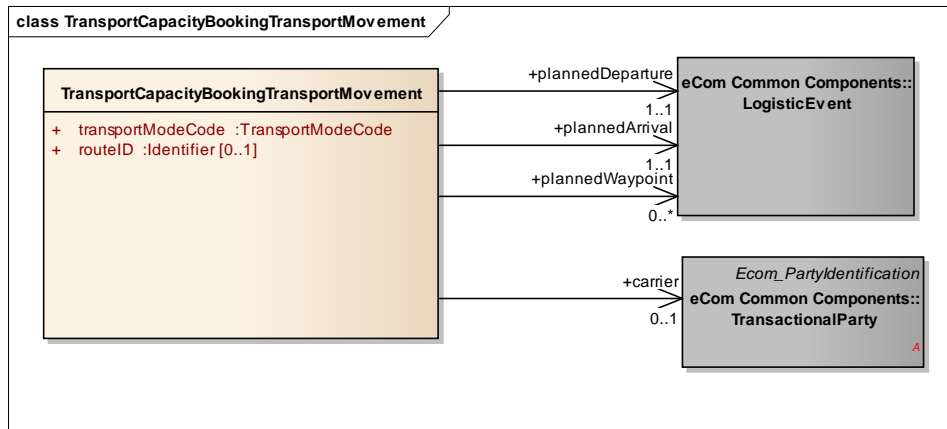
| Content                                    | Attribute / Role           | Datatype / Secondaryclass                  | Multiplicity | Definition  | Requirements                         |
|--|----------------------------|--|--------------|---|--------------------------------------|
| TransportCapacityBookingSpaceRequirements  |                            |  |              | Details on the booked transport space, such as volume, weight, transport equipment. |                                      |
| Association                                |                            | PassengerInformation                       | 0..*         | Information on passengers for which capacity is being booked.                       | BRAD Transport Planning - TBC6       |
| Association                                |                            | PackageTotal                               | 0..*         | Aggregate information per type of package to be transported.                        | BRAD Transport Planning - TBC3       |
| Association                                |                            | TransportCargoCharacteristics              | 1..1         | Aggregate information on the goods to be transported.                               | BRAD Transport Planning - TBC1, TBC2 |
| Association                                | includedTransportEquipment | TransportCapacityBookingTransportEquipment | 0..*         | Information on transport means to be transported as part of the cargo.              | BRAD Transport Planning - TBC4       |
| Association                                | includedTransportMeans     | TransportMeans                             | 0..*         | Information on transport means to be transported as part of the cargo.              | BRAD Transport Planning - TBC5       |
| TransportCapacityBookingTransportEquipment |                            |  |              | Information on transport means to be transported as part of the cargo.              |                                      |
| Generalization                             |                            | TransportEquipment                         |              |   |                                      |
| Association                                |                            | Dimension                                  | 0..1         | Dimensions for one piece of this type of transport equipment.                       |                                      |
| Attribute                                  | numberOfPiecesOfEquipment  | positiveInteger                            | 1..1         | The total number of pieces of the specified type of transport equipment.            |                                      |
| Attribute                                  | transportEquipmentWeight   | Measurement                                | 0..1         | A measure of the mass for one piece of transport equipment.                         |                                      |



**Note:** Reference Shared Common Library Business Message (BMS) Release 3.3 and eCom Domain Common Library Business Message (BMS) Release 3.3 for all common information.

## 4.1.2 Transport Capacity Booking Transport Movement

### Class Diagram



### GDD Report

The content of the **TransportCapacityBookingTransportMovement** class, its structure and component definitions can be accessed in the Global Data Dictionary:

[http://apps.gs1.org/GDD/bms/Version3\\_3/Pages/bieDetails.aspx?semanticURN=urn:gs1:gdd:bie:TransportCapacityBookingTransportMovement](http://apps.gs1.org/GDD/bms/Version3_3/Pages/bieDetails.aspx?semanticURN=urn:gs1:gdd:bie:TransportCapacityBookingTransportMovement)

| Content                                   | Attribute / Role | Datatype / Secondaryclass | Multiplicity | Definition   | Requirements                   |
|---|------------------|---------------------------|--------------|--|--------------------------------|
| TransportCapacityBookingTransportMovement |                  |                           |              | Details of the booked movement of the goods, such as mode of transport, locations, departure, and arrival date(s) and time(s).   |                                |
| Association                               | plannedWaypoint  | LogisticEvent             | 0..*         | An administrative procedure taking place at a specific location that may have an effect on the lead time of a transport movement, such as dangerous goods handling, customs clearance. |                                |
| Association                               | plannedArrival   | LogisticEvent             | 1..1         | The location and date and time on which the means of transport for this transport movement is scheduled to arrive.   | BRAD Transport Planning - TBM3 |

| Content     | Attribute / Role  | Datatype / Secondaryclass | Multiplicity | Definition   | Requirements                              |
|-------------|-------------------|---------------------------|--------------|--|---|
| Association | plannedDeparture  | LogisticEvent             | 1..1         | The location and date and time on which the means of transport for this transport movement is scheduled to depart. | BRAD Transport Planning - TBM2            |
| Association | carrier           | TransactionalParty        | 0..1         | A party which physically transports goods from one place to another.   | BRAD Transport Planning - new requirement |
| Attribute   | transportModeCode | TransportModeCode         | 1..1         | Code specifying the transportation mode used for this transport movement.  |   |
| Attribute   | routeID           | Identifier                | 0..1         | Unique identifier of the standard route that will be used for this transport movement.                             | BRAD Transport Planning - TBM1            |

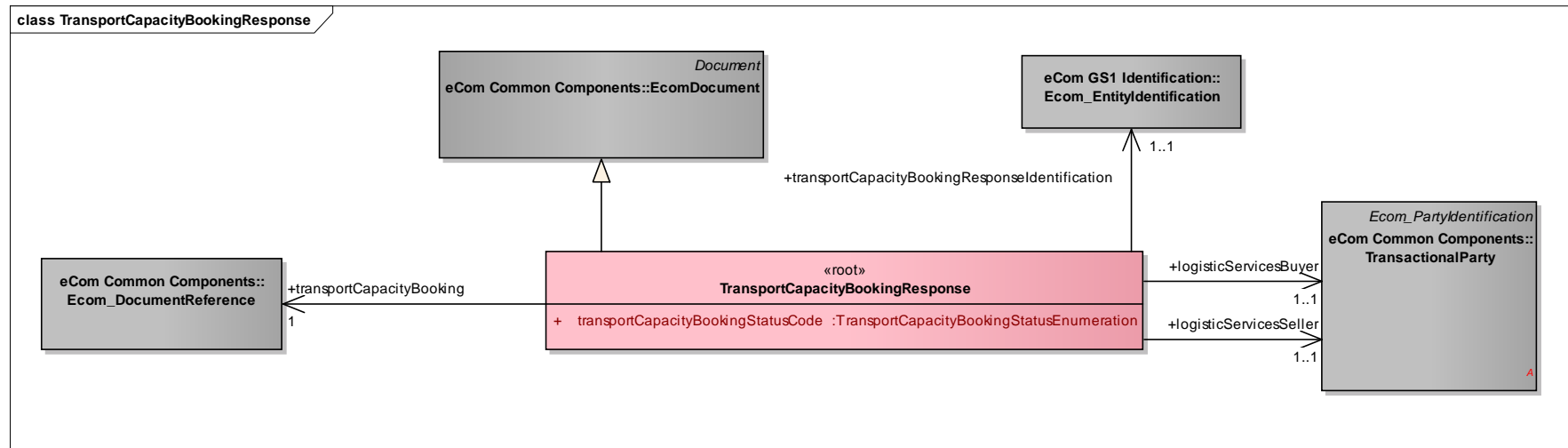


**Note:** Reference Shared Common Library Business Message (BMS) Release 3.3 and eCom Domain Common Library Business Message (BMS) Release 3.3 for all common information.



## 4.2 Transport Capacity Booking Response

### Class Diagram



### GDD Report

The content of the TransportCapacityBookingResponse class, its structure and component definitions can be accessed in the Global Data Dictionary:

[http://apps.gs1.org/GDD/bms/Version3\\_3/Pages/bieDetails.aspx?semanticURN=urn:gs1:gdd:bie:TransportCapacityBookingResponse](http://apps.gs1.org/GDD/bms/Version3_3/Pages/bieDetails.aspx?semanticURN=urn:gs1:gdd:bie:TransportCapacityBookingResponse)

| Content                          | Attribute / Role         | Datatype / Secondaryclass | Multiplicity | Definition   | Requirements                    |
|----------------------------------|--------------------------|---------------------------|--------------|--|---------------------------------|
| TransportCapacityBookingResponse |                          |                           |              | The Transport Capacity Booking Response is sent by the Logistic Services Seller to the Logistic Services Buyer, accepting or rejecting the Transport Capacity Booking. |                                 |
| Association                      | logisticServices Seller  | TransactionalParty        | 1..1         | A party that provides logistics services to another party.   | BRAD Transport Planning - CBCH7 |
| Association                      | transportCapacityBooking | DocumentReference         | 1..1         | Reference to the Transport Capacity Booking document being confirmed.  | BRAD Transport Planning - CBCH2 |

| Content        | Attribute / Role                               | Datatype / Secondaryclass                 | Multiplicity | Definition   | Requirements                                    |
|----------------|--|---|--------------|--|---|
| Association    | transportCapacityBookingResponseIdentification | Ecom_EntityIdentification                 | 1..1         | The identification of the transport capacity booking response document.                              | BRAD Transport Planning - CBCH1<br>WR 15-000314 |
| Association    | logisticServicesBuyer                          | TransactionalParty                        | 1..1         | A party that purchases logistics services from another party.  | BRAD Transport Planning - CBCH6                 |
| Generalization |  | EcomDocument                              |              | Basic information about the content of the message including version number, creation date and time. | BRAD Transport Planning - CBCH3, CBCH4          |
| Attribute      | transportCapacityBookingStatusCode             | TransportCapacityBookingStatusEnumeration | 1..1         | Code specifying the type of response.<br>Example: ACCEPTED.  | BRAD Transport Planning - CBCH5                 |



**Note:** Reference Shared Common Library Business Message (BMS) Release 3.3 and eCom Domain Common Library Business Message (BMS) Release 3.3 for all common information.

### 4.3 Enumerations (message specific)

Not applicable

### 4.4 Code Lists

| Class                                     | Codelist                                  | GDD Link  |
|---|---|---|
| TransportCapacityBookingResponse          | TransportCapacityBookingStatusEnumeration | <a href="http://apps.gs1.org/GDD/Pages/clDetails.aspx?semanticURN=urn:gs1:gdd:cl:TransportCapacityBookingStatusEnumeration">http://apps.gs1.org/GDD/Pages/clDetails.aspx?semanticURN=urn:gs1:gdd:cl:TransportCapacityBookingStatusEnumeration</a> |
| TransportCapacityBooking                  | TransportServiceCategoryCode              | <a href="http://apps.gs1.org/GDD/Pages/clDetails.aspx?semanticURN=urn:gs1:gdd:cl:TransportServiceCategoryCode">http://apps.gs1.org/GDD/Pages/clDetails.aspx?semanticURN=urn:gs1:gdd:cl:TransportServiceCategoryCode</a>                           |
| TransportCapacityBooking                  | TransportServiceConditionTypeCode         | <a href="http://apps.gs1.org/GDD/Pages/clDetails.aspx?semanticURN=urn:gs1:gdd:cl:TransportServiceConditionTypeCode">http://apps.gs1.org/GDD/Pages/clDetails.aspx?semanticURN=urn:gs1:gdd:cl:TransportServiceConditionTypeCode</a>                 |
| TransportCapacityBooking                  | TransportServiceLevelCode                 | <a href="http://apps.gs1.org/GDD/Pages/clDetails.aspx?semanticURN=urn:gs1:gdd:cl:TransportServiceLevelCode">http://apps.gs1.org/GDD/Pages/clDetails.aspx?semanticURN=urn:gs1:gdd:cl:TransportServiceLevelCode</a>                                 |
| TransportCapacityBookingTransportMovement | TransportModeCode                         | <a href="http://apps.gs1.org/GDD/Pages/clDetails.aspx?semanticURN=urn:gs1:gdd:cl:TransportModeCode">http://apps.gs1.org/GDD/Pages/clDetails.aspx?semanticURN=urn:gs1:gdd:cl:TransportModeCode</a>   |



**Note:** Refer to the Global Data Dictionary (GDD) for the code values.

## 5 Business Message Examples

### 5.1 Example 1

Logistic Service Buyer, CAB\_Manufacturing identified by GLN 1234567890128 sends a booking BOOK1234 in reference to the Transport Contract with reference 12345678 based on requirements of RQMT1234 to Logistics Service Seller XYZ\_Logistics, identified by GLN 9876543212344. The pickup party is company A, identified by GLN 1275432190141, the drop off party is company B, identified by GLN 4567891234533.

#### Party Information

| GS1 Global Location Number | Party Type              |
|----------------------------|-------------------------|
| 1234567890128              | Logistic Service Buyer  |
| 9876543212344              | Logistic Service Seller |
| 1275432190141              | Pickup Party            |
| 4567891234533              | Drop Off Party          |

#### Message Example 1

| Attribute   | Value               |
|---|---------------------|
| <b>TransportCapacityBooking</b>   |                     |
| creationDateTime  | 2011-02-11T12:00:00 |
| documentStatusCode  | ORIGINAL            |
| documentActionCode  | ADD                 |
| transportServiceCategoryCode  | 60 (multimode)      |
| <b>EntityIdentification<br/>(+transportCapacityBookingIdentification)</b> |                     |
| entityIdentification  | BOOK1234            |

| Attribute   | Value                  |
|---|------------------------|
| <b>TransactionalParty (+logisticServicesBuyer)</b>  |                        |
| Gln   | 1234567890128          |
| <b>TransactionalParty (+logisticServicesSeller)</b> |                        |
| Gln   | 9876543212344          |
| <b>TransactionalParty (+pickUpParty)</b>            |                        |
| Gln   | 4567891234533          |
| <b>Contact</b>                                      |                        |
| personName  | Mr Sven Ole Pedersen   |
| departmentName                                      | Log547                 |
| <b>CommunicationChannel</b>                         |                        |
| communicationChannelCode                            | TELEPHONE              |
| communicationValue                                  | +3227887827            |
| <b>CommunicationChannel</b>                         |                        |
| communicationChannelCode                            | TELEPHONE              |
| communicationValue                                  | +32496123923           |
| <b>CommunicationChannel</b>                         |                        |
| communicationChannelCode                            | TELEFAX                |
| communicationValue                                  | +3227887899            |
| <b>CommunicationChannel</b>                         |                        |
| communicationChannelCode                            | EMAIL                  |
| communicationValue                                  | svenole.pedersen@a.com |
| <b>TransactionalParty (+dropOffParty)</b>           |                        |
| Gln   | 22754321901233         |
| <b>Contact</b>                                      |                        |
| personName  | Herr. Uwe Haas         |
| departmentName                                      | LOG                    |
| <b>CommunicationChannel</b>                         |                        |
| communicationChannelCode                            | TELEPHONE              |
| communicationValue                                  | +3237887827            |
| <b>LogisticEvent (+plannedPickUp)</b>               |                        |
| <b>DateTimeRange (+logisticEventPeriod)</b>         |                        |
| beginDate   | 2011-02-17             |
| beginTime   | 17:00:00               |
| endTime   | 18:00:00               |
| <b>LogisticEvent (+plannedDropOff)</b>              |                        |
| <b>DateOptionalTime (+logisticEventDateTime)</b>    |                        |
| Date  | 2011-02-21             |
| <b>DeliveryTerms</b>                                |                        |
| incotermsCode                                       | DDP                    |
| <b>TransportCapacityBookingSpaceRequirements</b>    |                        |

| Attribute                            | Value                         |
|--------------------------------------|-------------------------------|
| <b>TransportCargoCharacteristics</b> |                               |
| cargoTypeDescription                 | Mobile Phones and Accessories |
| totalGrossWeight                     | 4500 KGM                      |
| totalGrossVolume                     | 40 CBM                        |

## 5.2 Example 2

Booking from Company B to Company D ferry for second leg (Gothenburg-Kiel).

### Message Example 2

| Attribute   | Value               |
|---|---------------------|
| <b>TransportCapacityBooking</b>                                       |                     |
| creationDateTime  | 2011-02-12T12:00:00 |
| documentStatusCode  | ORIGINAL            |
| documentActionCode  | ADD                 |
| transportServiceCategoryCode  | 10                  |
| transportServiceConditionTypeCode                                     | 36                  |
| <b>EntityIdentification (+transportCapacityBookingIdentification)</b> |                     |
| entityIdentification  | BOOK1236            |
| <b>TransactionalParty (+logisticServicesBuyer)</b>                    |                     |
| Gln   | 9876543212344       |
| <b>TransactionalParty (+logisticServicesSeller)</b>                   |                     |
| Gln   | 1234567892316       |
| <b>LogisticEvent (+plannedPickUp)</b>                                 |                     |
| <b>DateTimeRange (+logisticEventDateTime)</b>                         |                     |
| Date  | 2011-02-18          |
| Time  | 15:00:00            |
| <b>LogisticEvent (+plannedDropOff)</b>                                |                     |
| <b>DateOptionalTime (+logisticEventDateTime)</b>                      |                     |
| Date  | 2011-02-19          |
| Time  | 06:00:00            |
| <b>DeliveryTerms</b>  |                     |
| incotermsCode   | DDP                 |
| <b>TransportCapacityBookingTransportMovement</b>                      |                     |
| transportModeCode   | 10                  |
| routeID   | GOTKIE-17           |
| <b>LogisticEvent (+plannedDeparture)</b>                              |                     |
| <b>DateOptionalTime (+logisticEventDateTime)</b>                      |                     |
| Date  | 2011-02-18          |
| Time  | 17:00:00            |

| Attribute  | Value                         |
|--|-------------------------------|
| <b>LogisticEvent (+plannedArrival)</b>           |                               |
| <b>DateOptionalTime (+logisticEventDateTime)</b> |                               |
| Date   | 2011-02-19                    |
| Time   | 04:00:00                      |
| <b>TransportCapacityBookingSpaceRequirements</b> |                               |
| <b>TransportCargoCharacteristics</b>             |                               |
| cargoTypeCode                                    | 4                             |
| cargoTypeDescription                             | Mobile Phones and Accessories |
| totalGrossWeight                                 | 4500 KGM                      |
| totalGrossVolume                                 | 40 CBM                        |

### 5.3 Example 3

This is an example of a response to the booking from Company B to Company D ferry for second leg (Gothenburg-Kiel).

#### Message Example 3

| Attribute   | Value               |
|---|---------------------|
| <b>TransportCapacityBookingResponse</b>                                       |                     |
| creationDateTime  | 2011-02-12T12:01:00 |
| documentStatusCode  | ORIGINAL            |
| documentActionCode  | ADD                 |
| transportCapacityBookingStatusCode  | ACCEPTED            |
| <b>EntityIdentification (+transportCapacityBookingResponseIdentification)</b> |                     |
| entityIdentification  | BOOKRESP1236        |
| <b>DocumentReference (+transportCapacityBooking)</b>                          |                     |
| entityIdentification  | BOOK1236            |
| <b>TransactionalParty (+logisticServicesBuyer)</b>                            |                     |
| gln   | 9876543212344       |
| <b>TransactionalParty (+logisticServicesSeller)</b>                           |                     |
| gln   | 1234567892316       |

## 6 Implementation Considerations

### 6.1 User Guide

The Functional User Guide contains more information about the structure and content of the Transport Capacity Booking and Response message:

[http://www.gs1.org/docs/ecom/xml/3/3.3/eCom-Trade\\_messages.html#TransportCapacityBookingandResponse](http://www.gs1.org/docs/ecom/xml/3/3.3/eCom-Trade_messages.html#TransportCapacityBookingandResponse)

## 6.2 Message Specific Considerations

Not applicable

## 7 Summary of Changes

Any change in the GS1 standards is done based on the Work Request (WR) submitted by the GS1 User Companies or Member Organisations. All Work Requests are documented in the Work Request system available on the GS1 website: <http://wr.gs1.org>. The system is accessible to registered users. New visitors need to register first, to be able to access it. WRs can be searched by the number referenced in tables below, see: Search Work Requests. The number starts with the two last digits of the year when it was submitted, followed by the consecutive number within that year.



**Note:** WRs submitted earlier than February 2012 should be searched in Old Change Requests.

### 7.1 BMS Release 3.0

| Change   | Associated CR Number |
|--|----------------------|
| <ul style="list-style-type: none"> <li>In class diagram and GDD report for Transport Capacity Booking Response: Changed role name transportCapacityBookingConfirmationIdentification into transportCapacityBookingResponseIdentification</li> <li>Corrected sample data in paragraphs 6.1 (wrong GLN format) and 6.3 (missing reference).</li> </ul> |                      |

### 7.2 BMS Release 3.1

No work requests. Indirect changes due to upgrade to new Shared and eCom Common libraries.

### 7.3 BMS Release 3.2

| Change   | Associated<br>WR |
|--|------------------|
| <div>Added Attribute Value Pair at the root, line item and sub line item levels</div> <div><div>class TransportCapacityBooking - maintenance view</div><div><div>«root»<br/>TransportCapacityBooking</div><div><div>+ transportServiceCategoryCode :TransportServiceCategoryCode</div><div>+ transportServiceConditionTypeCode :TransportServiceConditionTypeCode [0..1]</div><div>+ transportServiceLevelCode :TransportServiceLevelCode [0..1]</div></div><div><div>maintenance</div><div>Change: (Verified) 3.2 changed generalisation from Document to eComDocument class to include AVP (WR 14-110)</div></div></div></div> | 14-000110        |

| Change  | Associated WR    |
|---|------------------|
| <p>Added Attribute Value Pair at the root, line item and sub line item levels</p> <pre> class TransportCapacityBookingResponse - maintenance view     «root»     TransportCapacityBookingResponse     + transportCapacityBookingStatusCode :TransportCapacityBookingStatusEnumeration     maintenance     Change: (Verified) 3.2 changed generalisation from Document to eComDocument class to include AVP (WR 14-110)         </pre> | <b>14-000110</b> |

## 7.4 BMS Release 3.3

| Change  | Associated WR  |
|---|--|
| <p>Created Ecom_EntityIdentification class and changed association from the previous EntityIdentification</p> <pre> class TransportCapacityBooking - maintenance view     «root»     TransportCapacityBooking     + transportServiceCategoryCode :TransportServiceCategoryCode     + transportServiceConditionTypeCode :TransportServiceConditionTypeCode [0..1]     + transportServiceLevelCode :TransportServiceLevelCode [0..1]     maintenance     Change: (Complete) 3.2 changed generalisation from Document to eComDocument class to include AVP (WR 14-110)     Change: (New) 3.3 changed association from EntityIdentification to Ecom_EntityIdentification (WR 15-314)      eCom GS1 Identification:: Ecom_EntityIdentification     maintenance     Change: (New) 3.3 New class (WR 15-314)     1..1     +transportCapacityBookingIdentification         </pre>                               | <b>15-000314</b><br>Make GS1 identification keys optional in GS1 EDI XML |
| <p>Created Ecom_EntityIdentification class and changed association from the previous EntityIdentification</p> <pre> class TransportCapacityBookingResponse - maintenance view     «root»     TransportCapacityBookingResponse     + transportCapacityBookingStatusCode :TransportCapacityBookingStatusEnumeration     maintenance     Change: (Complete) 3.2 changed generalisation from Document to eComDocument class to include AVP (WR 14-110)     Change: (New) 3.3 changed association from EntityIdentification to Ecom_EntityIdentification (WR 15-314)     Change: (New) 3.3 changed association named +transportCapacityBooking from DocumentReference to Ecom_DocumentReference (WR 15-314)      eCom GS1 Identification:: Ecom_EntityIdentification     maintenance     Change: (New) 3.3 New class (WR 15-314)     1..1     +transportCapacityBookingResponseIdentification         </pre> | <b>15-000314</b><br>Make GS1 identification keys optional in GS1 EDI XML |



| Change   | Associated WR   |
|--|---|
| <p>Created Ecom_DocumentReference class and changed association from the previous DocumentReference</p> <pre> classDiagram     class Ecom_Common_Components {         class Ecom_DocumentReference {             maintenance             Change: (New) 3.3 added referencedDocumentURI (WR 16-261)             Change: (New) 3.3 New class (WR 15-314)         }     }     class TransportCapacityBookingResponse {         transportCapacityBookingStatus         transportCapacityBookingStatusEnumeration         maintenance         Change: (Complete) 3.2 changed generalisation from Document to eComDocument class to include AVP (WR 14-110)         Change: (New) 3.3 changed association from EntityIdentification to Ecom_EntityIdentification (WR 15-314)         Change: (New) 3.3 changed association named transportCapacityBooking from DocumentReference to Ecom_DocumentReference (WR 15-314)     }     Ecom_Common_Components "Ecom_DocumentReference" -- "TransportCapacityBookingResponse" : transportCapacityBooking                     </pre> | <p><b>15-000314</b></p> <p>Make GS1 identification keys optional in GS1 EDI XML</p> |

## 8 Appendices

Not Applicable

## 9 Acknowledgements

### 9.1.1 Work Group

| Function | Name                        | Company / organisation                                    |
|----------|-----------------------------|---|
| Co-chair | Rossner (Pottier), Natascha | GS1 France  |
| Co-chair | Schmidt, Tom Eric           | August Storck KG  |
| Member   | Bemrose, Jonathan           | R&R Ice Cream   |
| Member   | Bodemer, Petra              | dm-drogerie markt GmbH + Co. KG                           |
| Member   | Boikanyo, Rebene            | GS1 South Africa / Consumer Goods Council of South Africa |
| Member   | Canada, ON                  | M3B 3L1   |
| Member   | Carlson, Jim                | General Mills, Inc.                                       |
| Member   | Chresta, Richard            | GS1 Switzerland   |
| Member   | Cook, Don                   | Wal-Mart Stores, Inc.                                     |
| Member   | Cox, Marc                   | Philips Electronics N.V.                                  |
| Member   | Darnell, David              | Systrends   |
| Member   | De Flou, Nele               | GS1 Belgium & Luxembourg                                  |
| Member   | Dicks, Arne                 | GS1 Germany   |
| Member   | Duvinger, Karina            | GS1 Sweden  |
| Member   | Foerderer, Klaus            | GS1 Germany   |
| Member   | Gathmann, Stefan            | GS1 Ireland   |
| Member   | Grangard, Anders            | GS1 Global Office   |
| Member   | Harpell, Eileen             | GS1 Community Room Staff                                  |
| Member   | Hand, Phil                  | JDA Software  |
| Member   | Herregodts, Kurt            | GS1 Belgium & Luxembourg                                  |
| Member   | Kempkes, Fred               | Unilever N.V.   |
| Member   | Kernan, Brendan             | GS1 Ireland   |
| Member   | Kidd, Robin                 | Nestle  |
| Member   | Krid, Anne-Claire           | GS1 France  |



| Function | Name                     | Company / organisation            |
|----------|--------------------------|-----------------------------------|
| Member   | Lanoue, Tom              | General Mills, Inc.               |
| Member   | Laur, Rita               | GS1 Canada                        |
| Member   | Lenman, Mia              | GS1 Sweden                        |
| Member   | Lerch, Hanjoerg          | METRO Group                       |
| Member   | Moberg, Dale             | Axway                             |
| Member   | Montes de Oca, Alejandra | GS1 Mexico                        |
| Member   | Ng, Ella                 | GS1 Australia                     |
| Member   | Peelen, Esther           | GS1 Netherlands                   |
| Member   | Pelekies, Andreas        | GS1 Germany                       |
| Member   | Perrier, Patricia        | GS1 France                        |
| Member   | Przybilla, Christian     | GS1 Germany                       |
| Member   | Pujol, Xavier            | GS1 Spain                         |
| Member   | Racek, Greg              | Wal-Mart Stores, Inc.             |
| Member   | Repetto, Mirko           | GS1 Italy                         |
| Member   | Robba, Steven            | 1WorldSync Holdings, Inc.         |
| Member   | Rosell, Pere             | GS1 Spain                         |
| Member   | Rosenberg, Steven        | GS1 US                            |
| Member   | Schmid, Sue              | GS1 Australia                     |
| Member   | Schneider, Christian     | GS1 Switzerland                   |
| Member   | Sehorz, Eugen            | GS1 Austria                       |
| Member   | Sharma, Vishal           | General Mills, Inc.               |
| Member   | Shimazaki, Ayako         | GS1 Japan                         |
| Member   | Sion, Emilie             | GS1 France                        |
| Member   | Souza, Nadia             | GS1 Brasil                        |
| Member   | Strand, Roman            | GS1 Germany                       |
| Member   | Tan, Milton              | GS1 Malaysia                      |
| Member   | Tompsett, Simon          | Waitrose                          |
| Member   | Trelle, Ute              | 1WorldSync Holdings, Inc.         |
| Member   | Tse, Steve               | GS1 Hong Kong                     |
| Member   | Tyson, Betty             | Knouse Foods Cooperative, Inc     |
| Member   | Van den Bergh, Senne     | GS1 Belgium & Luxembourg          |
| Member   | Van der Eijk, Pim        | OASIS - Sonnenglanz Consulting BV |
| Member   | Veldhuis, Saskia         | Procter & Gamble Co.              |
| Member   | Welch, Shan              | GS1 UK                            |
| Member   | Westerkamp, Jan          | GS1 Netherlands                   |
| Member   | Wilson, Mary             | GS1 US                            |
| Member   | Windsperger, Bekki       | Best Buy Co., Inc.                |
| Member   | Yang, Shaopeng           | GS1 China                         |
| Member   | Yusdiar, Dani            | GS1 Indonesia                     |
| Member   | Zwanziger, Greg          | SUPERVALU                         |

### 9.1.2 Development Team Members

| Function                   | Name              | Organisation      |
|----------------------------|-------------------|-------------------|
| GSMP Process Lead          | Jean-Luc Champion | GS1 Global Office |
| Technical Development Lead | Ewa Iwicka        | GS1 Global Office |
| Peer Review                | Mark Van Eeghem   | GS1 Global Office |