



The Global Language of Business

Logistics Inventory Report Request and Report Business Message Standard (BMS)

Release 3.3, Ratified, Mar 2017



Document Summary

Document Item	Current Value
Document Name	Logistics Inventory Report Request and Report Business Message Standard (BMS)
Document Date	Mar 2017
Document Version	3.3
Document Issue	1
Document Status	Ratified

Work Request Reference

Date of WR Submission to GSMP:	WR Submitter(s):	Refer to Work Request (WR) Number(s):
25-Jun-2014	GS1 Global Office	14-000110
11-Mar-2015	GS1 Germany	15-000046
12-Jul-2016	GS1 Global Office	16-000340

Business Requirements Document (BRAD) Reference

BRAD Title	BRAD Issue Date	BRAD Version
Collaborative Receipt Settlement	13-May-2006	0.0.15

Document Change History

Date of Change	Version	Changed By	Reason for Change	Summary of Change
12-Jan-2012	BMS 3.0 – Issue 1	Mark Van Eeghem	BMS Release 3.0	See summary of changes
01-May-2013	BMS 3.1 – Issue 1	Coen Janssen	BMS Release 3.1	See summary of changes
15-Sep-2014	BMS 3.2 – Issue 1	Ewa Iwicka	BMS Release 3.2	See summary of changes
01-Mar-2017	BMS 3.3 – Issue 1	Ewa Iwicka	BMS Release 3.3	See summary of changes

Disclaimer

GS1®, under its IP Policy, seeks to avoid uncertainty regarding intellectual property claims by requiring the participants in the Work Group that developed this **Logistics Inventory Report Request and Report Business Message Standard (BMS)** to agree to grant to GS1 members a royalty-free licence or a RAND licence to Necessary Claims, as that term is defined in the GS1 IP Policy. Furthermore, attention is drawn to the possibility that an implementation of one or more features of this Specification may be the subject of a patent or other intellectual property right that does not involve a Necessary Claim. Any such patent or other intellectual property right is not subject to the licencing obligations of GS1. Moreover, the agreement to grant licences provided under the GS1 IP Policy does not include IP rights and any claims of third parties who were not participants in the Work Group.



Request and Report

Accordingly, GS1 recommends that any organization developing an implementation designed to be in conformance with this Specification should determine whether there are any patents that may encompass a specific implementation that the organisation is developing in compliance with the Specification and whether a licence under a patent or other intellectual property right is needed. Such a determination of a need for licencing should be made in view of the details of the specific system designed by the organisation in consultation with their own patent counsel.

THIS DOCUMENT IS PROVIDED "AS IS" WITH NO WARRANTIES WHATSOEVER, INCLUDING ANY WARRANTY OF MERCHANTABILITY, NONINFRINGEMENT, FITNESS FOR PARTICULAR PURPOSE, OR ANY WARRANTY OTHERWISE ARISING OUT OF THIS SPECIFICATION. GS1 disclaims all liability for any damages arising from use or misuse of this Standard, whether special, indirect, consequential, or compensatory damages, and including liability for infringement of any intellectual property rights, relating to use of information in or reliance upon this document.

GS1 retains the right to make changes to this document at any time, without notice. GS1 makes no warranty for the use of this document and assumes no responsibility for any errors which may appear in the document, nor does it make a commitment to update the information contained herein.

GS1 and the GS1 logo are registered trademarks of GS1 AISBL.



Table of Contents

1	Business Domain View	5
1.1	Introduction	5
1.2	References	5
2	Business Context	5
3	Business Transaction View	6
3.1	Business Transaction – Issue Inventory Report Request	6
3.2	Business Transaction – Issue Inventory Report	7
4	Business Information View	8
4.1	Logistics Inventory Report Request (message)	8
4.2	Logistics Inventory Report (message)	11
4.3	Logistics Inventory Report Inventory Location	13
4.4	Enumerations (message specific)	16
4.4.1	LogisticsInventoryReportTypeEnumeration	16
4.5	Code Lists	16
5	Business Message Examples	17
5.1	Example 1	17
5.2	Example 2	19
6	Implementation Considerations	22
6.1	User Guide	22
6.2	Message Specific Considerations	22
7	Summary of Changes	23
7.1	BMS Release 3.1	23
7.2	BMS Release 3.2	23
7.3	BMS Release 3.3	24
8	Appendices	25
9	Acknowledgements	25
9.1	Work Group	25
9.2	Development Team Members	26

1 Business Domain View

1.1 Introduction

Message Definition

Logistics Inventory Request Message Definition

The Logistics Inventory Request message enables a party to request an inventory report from another party, using specific selection criteria.

Logistics Inventory Report Message Definition

The Logistics Inventory Report enables a party to report on inventory status and events as registered in his system.

Principles

These messages support the inventory management process.

1.2 References

[LIM] GS1 Logistics Interoperability Model, 1.0, GS1 2007

[BRAD_WIM] BRAD Warehousing Inventory Management, 1.0, GS1 2012

[BMS_Shared] BMS Shared Common Library, 3.3, GS1 2016

[BMS_eCom] BMS eCom Common Library, 3.3, GS1 2016

[BMS_Warehousing] BMS Warehousing Common Library, 3.3, GS1 2016

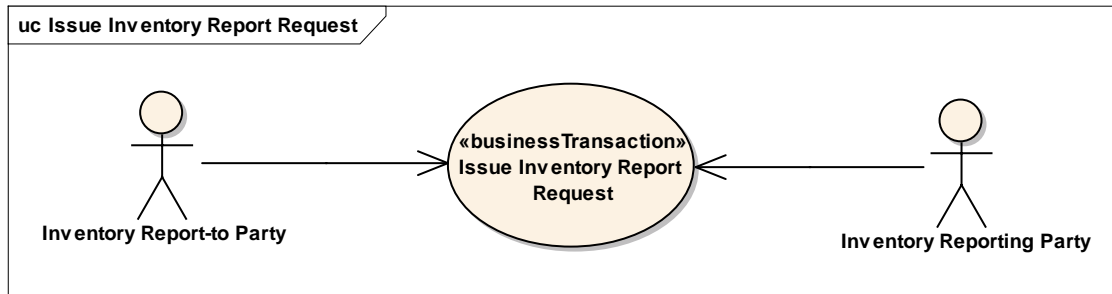
2 Business Context

Context Category	Value(s)
Industry	All
Geopolitical	All
Product	All
Process	Warehousing – Outbound Operations
System Capabilities	GS1 System
Official Constraints	None

3 Business Transaction View

3.1 Business Transaction – Issue Inventory Report Request

Use case diagram



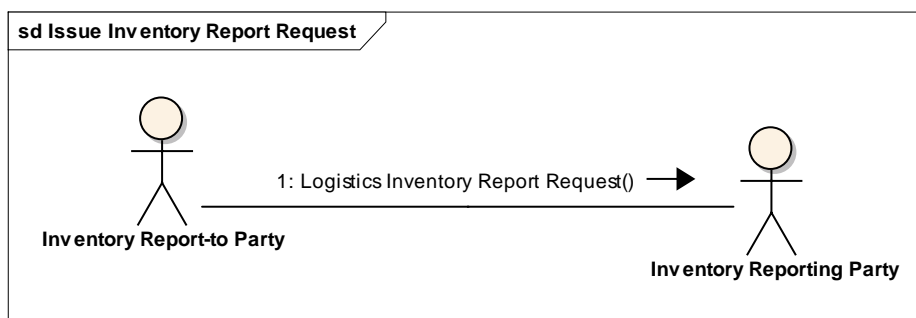
Use case description

Use Case Name	Issue Inventory Report Request
Use Case Description	The Inventory Report-to Party informs the Inventory Reporting Party that an inventory report is requested.
Actors (Goal)	Inventory Report-to Party Inventory Reporting Party
Performance Goals	Not applicable
Preconditions	none
Post conditions	The Inventory Reporting Party has been informed on the report request.
Main Scenario	<ul style="list-style-type: none"> Inventory Report-to Party sends the request to the Inventory Reporting Party. Inventory Reporting Party receives the request.
Alternative Scenario(s)	Not applicable
Related Requirements	
Related Rules	

Activity diagram

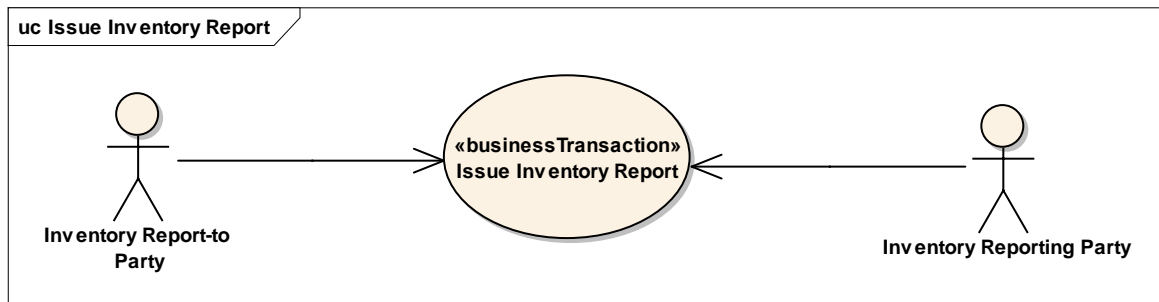
Not applicable

Communication diagram



3.2 Business Transaction – Issue Inventory Report

Use case diagram



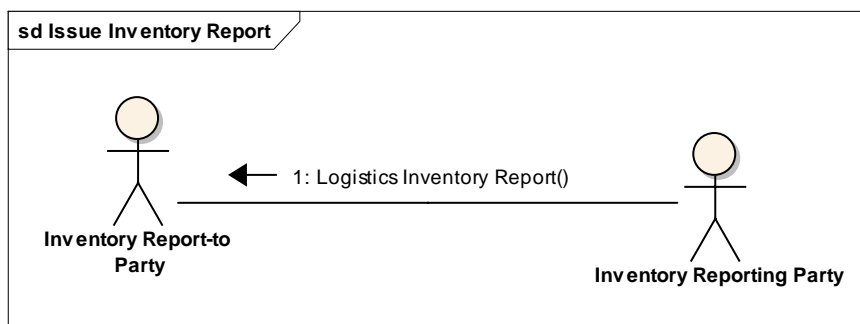
Use case description

Use Case Name	Issue Inventory Report
Use Case Description	The Inventory Reporting Party provides the Inventory Report-to Party with an inventory report.
Actors (Goal)	Inventory Report-to Party Inventory Reporting Party
Performance Goals	Not applicable
Preconditions	(Optional) The Inventory Reporting Party has received an Inventory Report Request
Post conditions	The Inventory Report-to Party has received the report.
Main Scenario	<u>Based on a report request by the Inventory Report-to Party:</u> <ul style="list-style-type: none"> Inventory Reporting Party generates the report. Inventory Reporting Party sends the report to the Inventory Report-to Party. Inventory Report-to Party receives the report and processes it in his system.
Alternative Scenario(s)	<u>Periodical report:</u> Same steps as in main scenario <u>Ad-hoc report initiated by Inventory Reporting Party:</u> Same steps as in main scenario
Related Requirements	
Related Rules	

Activity diagram

Not applicable

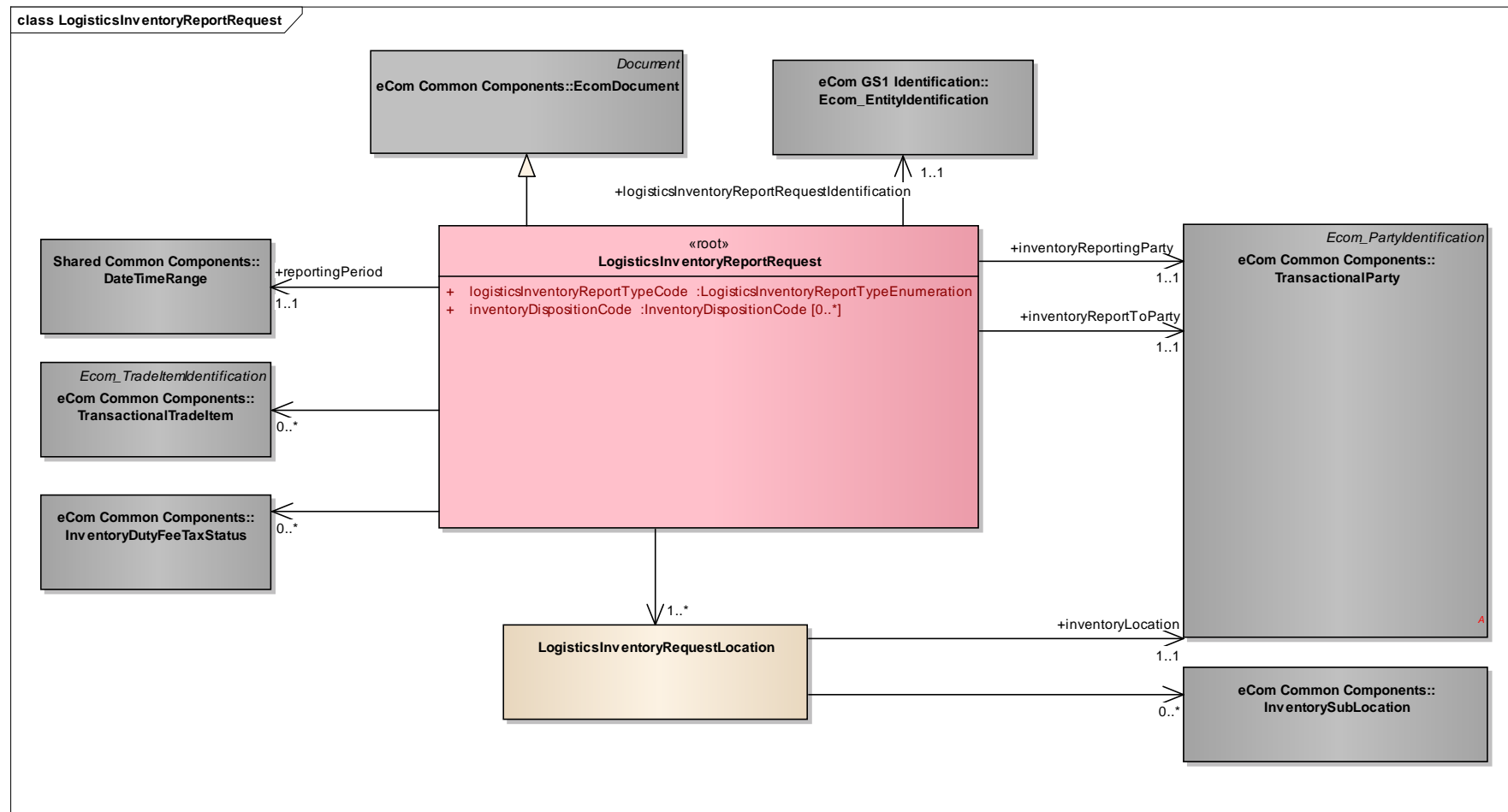
Communication diagram



4 Business Information View

4.1 Logistics Inventory Report Request (message)

Class diagram



**GDD report**

The content of the LogisticsInventoryReportRequest class, its structure and component definitions can be accessed in the Global Data Dictionary:
http://apps.gs1.org/GDD/bms/Version3_3/Pages/bieDetails.aspx?semanticURN=urn:gs1:gdd:bie:LogisticsInventoryReportRequest

Content	Attribute / Role	Datatype / Secondary class	Multiplicity	Definition	Requirements
LogisticsInventoryReportRequest				The Logistics Inventory Report Request enables a party (the inventory report to party) to request information on inventory levels and inventory changes to another party (the inventory reporting party).	
Association		InventoryDutyFeeTaxStatus	0..*	The inventory duty, fee or tax status on which inventory information is being requested.	[brad-wim:invrpr-10,11]
Association	reportingPeriod	DateTimeRange	1..1	The time period for which the inventory information is being requested.	[brad-wim:invrpr-5]
Association		TransactionalTradeItem	0..*	The trade items on which inventory information is being requested.	[brad-wim:invrpr-6]
Association		LogisticsInventoryRequestLocation	1..*	Contains the inventory location and related sub-locations for which inventory information is being requested.	
Association	inventoryReportingParty	TransactionalParty	1..1	The identification of the party reporting about the inventory.	[brad-wim:invrpr-2]
Generalization		EcomDocument		Basic information about the content of the message including version number, creation date and time.	WR 14-000110
Association	logisticsInventoryReportRequestIdentification	Ecom_EntityIdentification	1..1	Unique identification of the logistics inventory report request, assigned by the inventory report to party.	[brad-wim:invrpr-1] WR 15-000314
Association	inventoryReportToParty	TransactionalParty	1..1	The identification of the party to which the inventory is being reported.	[brad-wim:invrpr-2]
Attribute	logisticsInventoryReportTypeCode	LogisticsInventoryReportTypeEnumeration	1..1	Code specifying the type of report that is requested.	
Attribute	inventoryDispositionCode	InventoryDispositionCode	0..*	Denotes the business states of trade items for which information is being requested.	

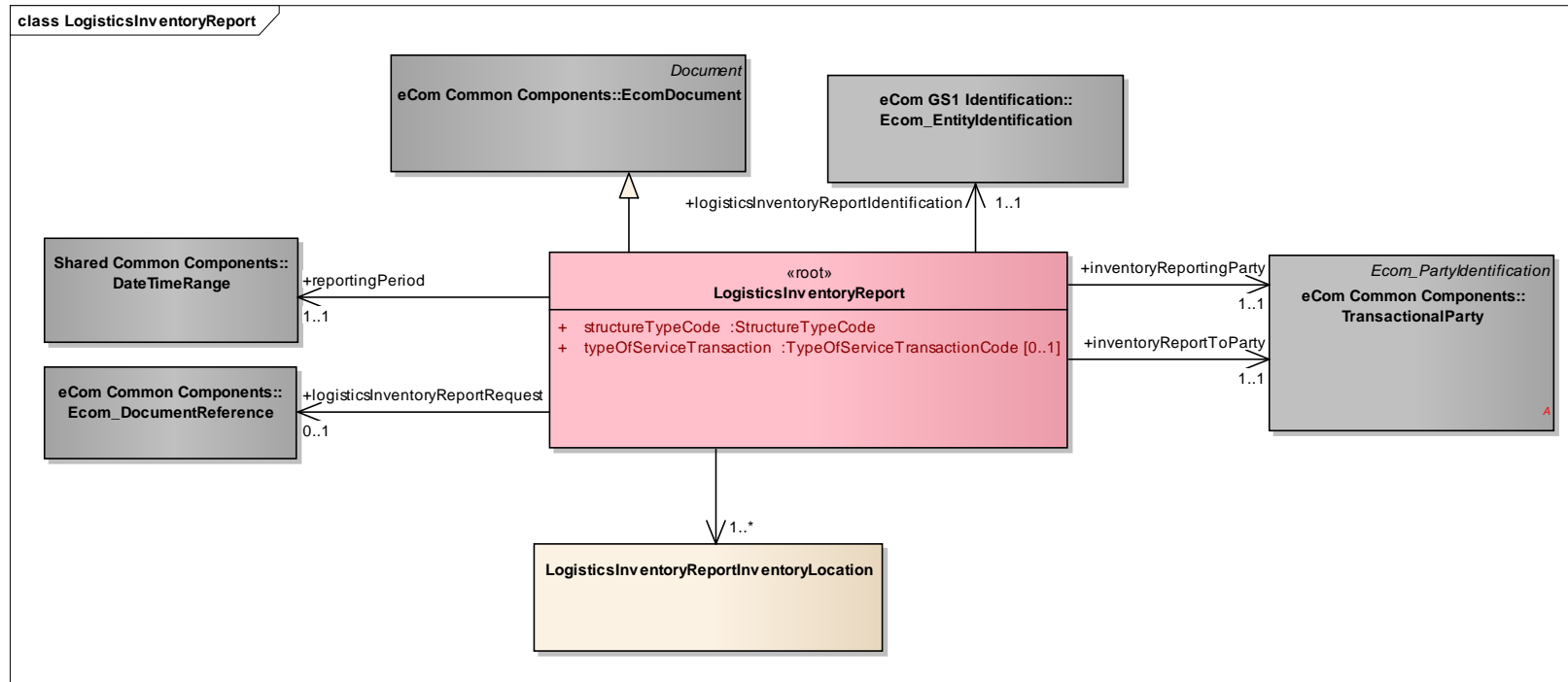
Content	Attribute / Role	Datatype / Secondary class	Multiplicity	Definition	Requirements
LogisticsInventoryRequestLocation				Contains the inventory location and related sub-locations for which inventory information is being requested.	
Association	inventoryLocation	TransactionalParty	1..1	The inventory location for which inventory information is being requested	[brad-wim:invrpr-7]
Association		InventorySubLocation	0..*	The inventory sub-locations for which inventory information is being requested.	[brad-wim:invrpr-8]



Note: Reference Shared Common Library Business Message (BMS) Release 3.3 and eCom Domain Common Library Business Message (BMS) Release 3.3 for all common information.

4.2 Logistics Inventory Report (message)

Class Diagram



GDD Report

The content of the LogisticsInventoryReport class, its structure and component definitions can be accessed in the Global Data Dictionary:
http://apps.gs1.org/GDD/bms/Version3_3/Pages/bieDetails.aspx?semanticURN=urn:gs1:gdd:bie:LogisticsInventoryReportInventoryLocation

Content	Attribute / Role	Datatype / Secondary class	Multiplicity	Definition	Requirements
LogisticsInventoryReport				The Logistics Inventory Report enables a party (the inventory reporting party) to provide information on inventory levels and inventory changes to another party (the inventory report to party).	

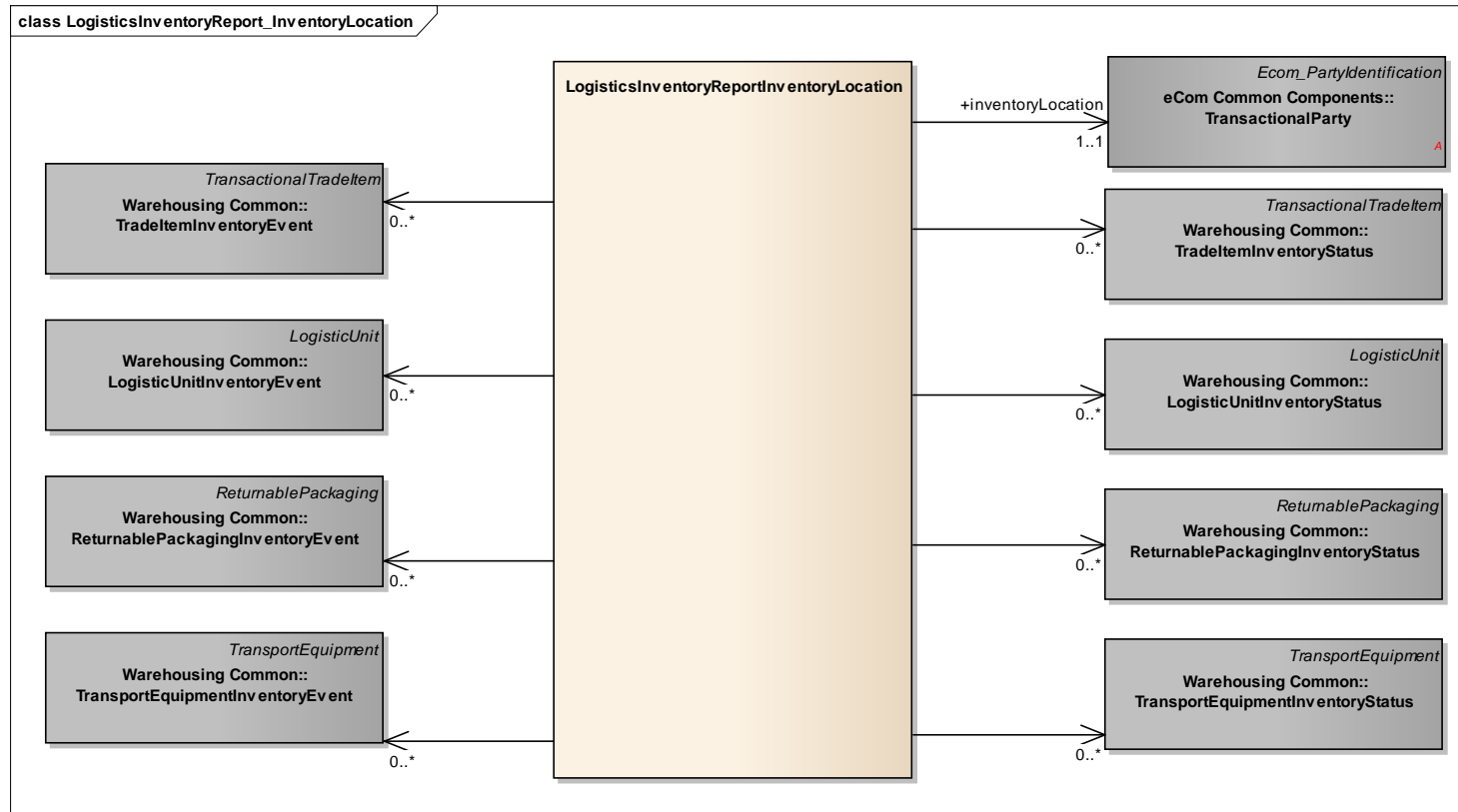
Content	Attribute / Role	Datatype / Secondary class	Multiplicity	Definition	Requirements
Association	logisticsInventoryReportIdentification	Ecom_EntityIdentification	1..1	Unique identification of the inventory report, assigned by the inventory reporting party.	
Association	logisticsInventoryReportRequest	Ecom_DocumentReference	0..1	Reference to the logistics inventory report request, if applicable.	
Association	reportingPeriod	DateTimeRange	1..1	The time period for which the inventory report provides information.	
Association	inventoryReportingParty	TransactionalParty	1..1	The identification of the party reporting about the inventory.	
Association		LogisticsInventoryReportInventoryLocation	1..*	Contains the inventory information per inventory location.	
Generalization		EcomDocument		Basic information about the content of the message including version number, creation date and time.	WR 14-000110
Association	inventoryReportToParty	TransactionalParty	1..1	The identification of the party to which the inventory is being reported.	
Attribute	structureTypeCode	StructureTypeCode	1..1	Contains the type of sequencing of the inventory report	
Attribute	typeOfServiceTransaction	TypeOfServiceTransactionCode	0..1	Specifies whether inventory report is generated according to schedule or triggered by a specific event.	WR 15-000046



Note: Reference Shared Common Library Business Message (BMS) Release 3.3 and eCom Domain Common Library Business Message (BMS) Release 3.3 for all common information.

4.3 Logistics Inventory Report Inventory Location

Class Diagram



**GDD Report**

The content of the LogisticsInventoryReportInventoryLocation class, its structure and component definitions can be accessed in the Global Data Dictionary:

http://apps.gs1.org/GDD/bms/Version3_3/Pages/bieDetails.aspx?semanticURN=urn:gs1:gdd:bie:LogisticsInventoryReportInventoryLocation

Content	Attribute / Role	Datatype / Secondary class	Multiplicity	Definition	Requirements
LogisticsInventoryReportInventoryLocation				Contains the inventory information for an inventory location.	
Association		ReturnablePackagingInventoryStatus	0..*	Information specifying the inventory status of a set of returnable packaging items (of the same type) at a specific sub-location at a specific point in time.	[brad-wim:eCom-1]
Association		LogisticUnitInventoryEvent	0..*	Information specifying an inventory activity of a specific logistic unit at a specific sub-location at a specific point in time.	
Association		TransportEquipmentInventoryEvent	0..*	Information specifying an inventory activity of one or more pieces of transport equipment (of the same type) at a specific sub-location at a specific point in time.	[brad-wim:eCom-1]
Association		ReturnablePackagingInventoryEvent	0..*	Information specifying an inventory activity of one or more returnable packaging items (of the same type) at a specific sub-location at a specific point in time.	[brad-wim:eCom-1]
Association		TradeItemInventoryEvent	0..*	Information specifying an inventory activity of one or more trade items (of the same type) at a specific sub-location at a specific point in time.	[brad-wim:IR-301,302,3003,304]
Association		TransportEquipmentInventoryStatus	0..*	Information specifying the inventory status of a set of pieces of transport equipment (of the same type) at a specific sub-location at a specific point in time.	[brad-wim:eCom-1]
Association		LogisticUnitInventoryStatus	0..*	Information specifying the inventory status of a logistic unit at a specific sub-location at a specific point in time.	



Content	Attribute / Role	Datatype / Secondary class	Multiplicity	Definition	Requirements
Association		TradeItemInventoryStatus	0..*	Information specifying the inventory status of a set of trade items (of the same type) at a specific sub-location at a specific point in time.	[brad-wim:IR-100,200]
Association	inventoryLocation	TransactionalParty	1..1	Identification of the site where the items are located.	

4.4 Enumerations (message specific)

4.4.1 LogisticsInventoryReportTypeEnumeration

Code Value	Code Definition
FULL_REPORT	Report containing activity and status information on multiple trade items and non-trade items.
FULL_STATUS_REPORT	Report containing status information on multiple trade items and non-trade items.
TRADE_ITEM_REPORT	Report containing activity and status information on one or more trade items.
TRADE_ITEM_STATUS_REPORT	Report containing status information on one or more trade items.
NON_TRADE_ITEM_REPORT	Report containing containing activity and status information on multiple non-trade items.
NON_TRADE_ITEM_STATUS_REPORT	Report containing containing status information on multiple non-trade items.

4.5 Code Lists

Class	Codelist	GDD Link
LogisticsInventoryReport	StructureTypeCode	http://apps.gs1.org/GDD/Pages/clDetails.aspx?semanticURN=urn:gs1:gdd:cl:StructureTypeCode
LogisticsInventoryReportRequest	InventoryDispositionCode	http://apps.gs1.org/GDD/Pages/clDetails.aspx?semanticURN=urn:gs1:gdd:cl:InventoryDispositionCode
LogisticsInventoryReport	TypeOfServiceTransactionCode	http://apps.gs1.org/GDD/Pages/clDetails.aspx?semanticURN=urn:gs1:gdd:cl:TypeOfServiceTransactionCode



Note: Refer to the Global Data Dictionary (GDD) for the code values.

5 Business Message Examples

5.1 Example 1

This is an example of the Logistic Inventory Report message used to communicate the periodical status.

Party Information

GS1 Global Location Number	Party Type
3333333000001	Inventory Reporting Party
2222222000004	Report To Party
3333333000018	Inventory Location

Message Example 1

Attribute	Value
LogisticsInventoryReport	
creationDateTime	2012-07-11 00:00
documentStatusCode	ORIGINAL
documentActionCode	ADD
structureTypeCode	LOCATION_BY_ITEM
EntityIdentification (+logisticsInventoryReportIdentification)	
entityIdentification	INVRPT-0123
DateTimeRange (+reportingPeriod)	
beginDate	2012-07-11
beginTime	00:00
TransactionalParty (+inventoryReportingParty)	
gln	3333333000001
TransactionalParty (+inventoryReportToParty)	
gln	2222222000004
LogisticsInventoryReportInventoryLocation	
TransactionalParty (+inventoryLocation)	
gln	3333333000018
TradeItemInventoryStatus	
gtin	01111111001110
tradeItemQuantity	400
inventoryDispositionCode	sellable_accessible
InventorySubLocation (+)	
glnExtension	AB-1
TransactionalItemData (+)	



Attribute	Value
tradeItemQuantity	200
batchNumber	bno120032
TransactionalItemData (+)	
tradeItemQuantity	200
batchNumber	bno120033
TradeItemInventoryStatus	
gtin	01111111001110
tradeItemQuantity	400
inventoryDispositionCode	NON-SELLABLE_QUARANTINED
InventorySubLocation (+)	
glnExtension	AB-2
TransactionalItemData (+)	
tradeItemQuantity	200
batchNumber	bno120034
TransactionalItemData (+)	
tradeItemQuantity	200
batchNumber	bno120035

Message Example 1 Including Cycle Count Data:

Attribute	Value
TradeItemInventoryEvent	
gtin	01111111001110
tradeItemQuantity	400
eventDateTime	2012-07-11 12:20
inventoryBusinessStepCode	COUNTING
inventoryDispositionCode	SELLABLE_ACCESSIBLE
InventorySubLocation	
glnExtension	AB-1
TradeItemInventoryEvent	
gtin	01111111001110
tradeItemQuantity	399
eventDateTime	2012-07-11 12:20
inventoryBusinessStepCode	COUNTING
inventoryDispositionCode	SELLABLE_ACCESSIBLE
InventorySubLocation	
glnExtension	AB-2
TradeItemInventoryEvent	
gtin	01111111001110
tradeItemQuantity	1

Attribute	Value
eventDateTime	2012-07-11 12:20
inventoryBusinessStepCode	COUNTING
inventoryDispositionCode	NON-SELLABLE_DAMAGED
InventorySubLocation	
glnExtension	AB-2

5.2 Example 2

This is an example of the Logistic Inventory Request message used for adhoc query

Party Information

GS1 Global Location Number	Party Type
3333333000001	Inventory Reporting Party
2222222000004	Report To Party
3333333000018	Inventory Location

Message Example 1

Attribute	Value
LogisticsInventoryRequest	
creationDateTime	2012-07-11 00:00
documentStatusCode	ORIGINAL
documentActionCode	ADD
logisticsInventoryReportTypeCode	TRADE_ITEM_REPORT
EntityIdentification (+logisticsInventoryReportRequestIdentification)	
entityIdentification	INVRPRQ-21
TransactionalParty (+inventoryReportingParty)	
gln	3333333000001
TransactionalParty (+inventoryReportToParty)	
gln	2222222000004
TransactionalTradeItem (+)	
gtin	01111111001110
DateRange (+reportingPeriod)	
beginDate	2012-07-01
beginTime	00:00
endDate	2012-08-01
endTime	00:00
LogisticsInventoryRequestLocation	
TransactionalParty (+inventoryLocation)	

Attribute	Value
gln	3333333000018
InventorySubLocation (+)	
glnExtension	AB-1

Response to the request:

Attribute	Value
LogisticsInventoryReport	
creationDateTime	2012-07-11 00:00
documentStatusCode	ORIGINAL
documentActionCode	ADD
structureTypeCode	LOCATION_BY_ITEM
EntityIdentification (+logisticsInventoryReportIdentification)	
entityIdentification	INVRPT-01256
TransactionalParty (+inventoryReportingParty)	
gln	3333333000001
TransactionalParty (+inventoryReportToParty)	
gln	2222220000004
DateTimeRange (+reportingPeriod)	
beginDate	2012-07-01
beginTime	00:00
endDate	2012-08-01
endTime	00:00
DocumentReference (+logisticsInventoryReportRequest)	
entityIdentification	INVRPRQ-21
LogisticsInventoryReportInventoryLocation	
TransactionalParty (+inventoryLocation)	
gln	3333333000018
TradeItemInventoryStatus	
gtin	01111111001110
tradeItemQuantity	300
inventoryDispositionCode	SELLABLE_ACCESSIBLE
inventoryDateTime	2012-08-01 00:00
InventorySubLocation (+)	
glnExtension	AB-1
TransactionalItemData (+)	
tradeItemQuantity	200
batchNumber	bno120032
TransactionalItemData (+)	
tradeItemQuantity	200

Attribute	Value
batchNumber	bn0120033
InventoryDutyFeeTaxStatus (+)	
dutyFeeTaxTypeCode	IMP
customsWarehouseStatusCode	FREE_CIRCULATION
TradeItemInventoryEvent	
gtin	01111111001110
tradeItemQuantity	200
eventDateTime	2012-07-11 12:15
inventoryBusinessStepCode	STATUS_CHANGING
inventoryDispositionCode	SELLABLE_ACCESSIBLE
inventoryMovementTypeCode	DECREASE
InventorySubLocation (+)	
glnExtension	AB-1
InventoryDutyFeeTaxStatus (+)	
dutyFeeTaxTypeCode	IMP
customsWarehouseStatusCode	BONDED
TradeItemInventoryEvent	
gtin	01111111001110
tradeItemQuantity	200
eventDateTime	2012-07-11 12:15
inventoryBusinessStepCode	STATUS_CHANGING
inventoryDispositionCode	SELLABLE_ACCESSIBLE
inventoryMovementTypeCode	INCREASE
InventorySubLocation (+)	
glnExtension	AB-1
InventoryDutyFeeTaxStatus (+)	
dutyFeeTaxTypeCode	IMP
customsWarehouseStatusCode	BONDED
InventorySubLocation (+)	
glnExtension	AB-1
InventoryDutyFeeTaxStatus (+)	
dutyFeeTaxTypeCode	IMP
customsWarehouseStatusCode	FREE_CIRCULATION
TradeItemInventoryEvent	
gtin	01111111001110
tradeItemQuantity	100
eventDateTime	2012-0-21 14:15
inventoryBusinessStepCode	TRANSFERRING
inventoryDispositionCode	SELLABLE_ACCESSIBLE
inventoryMovementTypeCode	INCREASE
InventorySubLocation (+)	

Attribute	Value
glnExtension	AB-1
InventoryDutyFeeTaxStatus (+)	
dutyFeeTaxTypeCode	IMP
customsWarehouseStatusCode	FREE_CIRCULATION
TradeItemInventoryEvent	
gtin	01111111001110
tradeItemQuantity	100
eventDateTime	2012-07-21 13:15
inventoryBusinessStepCode	TRANSFERRING
inventoryDispositionCode	SELLABLE_ACCESSIBLE
inventoryMovementTypeCode	DECREASE
InventorySubLocation (+)	
glnExtension	AB-2
InventoryDutyFeeTaxStatus (+)	
dutyFeeTaxTypeCode	IMP
customsWarehouseStatusCode	FREE_CIRCULATION

6 Implementation Considerations

6.1 User Guide

The Functional User Guide contains more information about the structure and content of the Logistics Inventory Report Request and Report message:

http://www.gs1.org/docs/ecom/xml/3/3.3/eCom-Trade_messages.html#LogisticsInventoryReportRequestandReport

6.2 Message Specific Considerations

Not applicable.

7 Summary of Changes

Any change in the GS1 standards is done based on the Work Request (WR) submitted by the GS1 User Companies or Member Organisations. All Work Requests are documented in the Work Request system available on the GS1 website: <http://wr.gs1.org>. The system is accessible to registered users. New visitors need to register first, to be able to access it. WRs can be searched by the number referenced in tables below, see: Search Work Requests. The number starts with the two last digits of the year when it was submitted, followed by the consecutive number within that year.



Note: WRs submitted earlier than February 2012 should be searched in Old Change Requests.

7.1 BMS Release 3.1

First release of this message standard.

7.2 BMS Release 3.2

Change	Associated WR
<p>Added Attribute Value Pair at the root, line item and sub line item levels</p> <div> class LogisticsInventoryReportRequest - maintenance view <div> <div>«root»</div> <div>LogisticsInventoryReportRequest</div> <div> + logisticsInventoryReportTypeCode :LogisticsInventoryReportTypeEnumeration + inventoryDispositionCode :InventoryDispositionCode [0..*] </div> <div>maintenance</div> <div>Change: (Verified) 3.2 changed generalisation from Document to eComDocument class to include AVP (WR 14-110)</div> </div> </div>	14-000110
<p>Added Attribute Value Pair at the root, line item and sub line item levels</p> <div> class LogisticsInventoryReport - maintenance view <div> <div>«root»</div> <div>LogisticsInventoryReport</div> <div> + structureTypeCode :StructureTypeCode </div> <div>maintenance</div> <div>Change: (Verified) 3.2 changed generalisation from Document to eComDocument class to include AVP (WR 14-110)</div> </div> </div>	14-000110

7.3 BMS Release 3.3

Change	Associated WR
<ul style="list-style-type: none"> Created Ecom_EntityIdentification class and changed association from the previous EntityIdentification Created Ecom_DocumentReference class and changed association from the previous DocumentReference 	<p>15-000314</p> <p>Make GS1 identification keys optional in GS1 EDI XML</p>
<p>Created TypeOfServiceTransactionCode class and added TypeOfServiceTransactionCode in LogisticsInventoryReport class</p>	<p>15-000314</p> <p>Make GS1 identification keys optional in GS1 EDI XML</p>
<p>Created Ecom_EntityIdentification class and changed association from the previous EntityIdentification</p>	<p>15-000314</p> <p>Make GS1 identification keys optional in GS1 EDI XML</p>

8 Appendices

Not Applicable

9 Acknowledgements

9.1 Work Group

Function	Name	Company / organisation
Co-chair	Rossner (Pottier), Natascha	GS1 France
Co-chair	Schmidt, Tom Eric	August Storck KG
Member	Bemrose, Jonathan	R&R Ice Cream
Member	Bodemer, Petra	dm-drogerie markt GmbH + Co. KG
Member	Boikanyo, Rebhone	GS1 South Africa / Consumer Goods Council of South Africa
Member	Canada, ON	M3B 3L1
Member	Carlson, Jim	General Mills, Inc.
Member	Chresta, Richard	GS1 Switzerland
Member	Cook, Don	Wal-Mart Stores, Inc.
Member	Cox, Marc	Philips Electronics N.V.
Member	Darnell, David	Systrends
Member	De Flou, Nele	GS1 Belgium & Luxembourg
Member	Dicks, Arne	GS1 Germany
Member	Duvinger, Karina	GS1 Sweden
Member	Foerderer, Klaus	GS1 Germany
Member	Gathmann, Stefan	GS1 Ireland
Member	Grangard, Anders	GS1 Global Office
Member	Harpell, Eileen	GS1 Community Room Staff
Member	Hand, Phil	JDA Software
Member	Herregodts, Kurt	GS1 Belgium & Luxembourg
Member	Kempkes, Fred	Unilever N.V.
Member	Kernan, Brendan	GS1 Ireland
Member	Kidd, Robin	Nestle
Member	Krid, Anne-Claire	GS1 France
Member	Lanoue, Tom	General Mills, Inc.
Member	Laur, Rita	GS1 Canada
Member	Lenman, Mia	GS1 Sweden
Member	Lerch, Hanjoerg	METRO Group
Member	Moberg, Dale	Axway
Member	Montes de Oca, Alejandra	GS1 Mexico
Member	Ng, Ella	GS1 Australia
Member	Peelen, Esther	GS1 Netherlands
Member	Pelekies, Andreas	GS1 Germany

Function	Name	Company / organisation
Member	Perrier, Patricia	GS1 France
Member	Przybilla, Christian	GS1 Germany
Member	Pujol, Xavier	GS1 Spain
Member	Racek, Greg	Wal-Mart Stores, Inc.
Member	Repetto, Mirko	GS1 Italy
Member	Robba, Steven	1WorldSync Holdings, Inc.
Member	Rosell, Pere	GS1 Spain
Member	Rosenberg, Steven	GS1 US
Member	Schmid, Sue	GS1 Australia
Member	Schneider, Christian	GS1 Switzerland
Member	Sehorz, Eugen	GS1 Austria
Member	Sharma, Vishal	General Mills, Inc.
Member	Shimazaki, Ayako	GS1 Japan
Member	Sion, Emilie	GS1 France
Member	Souza, Nadia	GS1 Brasil
Member	Strand, Roman	GS1 Germany
Member	Tan, Milton	GS1 Malaysia
Member	Tompsett, Simon	Waitrose
Member	Trelle, Ute	1WorldSync Holdings, Inc.
Member	Tse, Steve	GS1 Hong Kong
Member	Tyson, Betty	Knouse Foods Cooperative, Inc
Member	Van den Bergh, Senne	GS1 Belgium & Luxembourg
Member	Van der Eijk, Pim	OASIS - Sonnenglanz Consulting BV
Member	Veldhuis, Saskia	Procter & Gamble Co.
Member	Welch, Shan	GS1 UK
Member	Westerkamp, Jan	GS1 Netherlands
Member	Wilson, Mary	GS1 US
Member	Windsperger, Bekki	Best Buy Co., Inc.
Member	Yang, Shaopeng	GS1 China
Member	Yusdiar, Dani	GS1 Indonesia
Member	Zwanziger, Greg	SUPERVALU

9.2 Development Team Members

Function	Name	Organisation
GSMP Process Lead	Jean-Luc Champion	GS1 Global Office
Technical Development Lead	Ewa Iwicka	GS1 Global Office
Peer Review	Mark Van Eeghem	GS1 Global Office