



# **Business Message Standard (BMS) Debit Credit Advice**

**BMS Release: 2.3.0, BRG Name: eCom**

***Issue 3.0.4 , 25- May- 2007***

## Document Summary

Document Item	Current Value
Document Title	Business Message Standard (BMS)
BMS Name	Debit Credit Advice
BMS Release	2.3.0
BRG Name	eCom
Document Number	Issue 3.0.4
Date Last Modified	25- May- 2007
Status	Approved
Owner	eCom BRG
BMS Template Version	1.8

## Change Request Reference

Date of CR Submission to GSMP:	CR Submitter(s):	Refer to Change Request (CR) Number(s):
20061115	Andy Kim, GS1 Australia	06-000283
20061119	Andy Kim, GS1 Australia	06-000303
20061217	Andy Kim, GS1 Australia	06-000334

## Business Requirements Document (BRAD) Reference

BRAD Title:	BRAD Date:	BRAD Version
Debit Credit Advice Enhancements	20070111	Version 0.0.1
Common Library		BMS Release Version 2.3
BRD Debit or Credit Advice	20040417	Version 1.1

## Document Change History

Date of Change	Version	Changed By	Reason for Change	Summary of Change	Model Build #
20041231	2.0.0	Andrew Hearn	Initial Version in BMS/BSD template	Migration of BRD to standard BMS.BRD format	N/A
20041231	2.0.0	Rob Toole	Added GDD information and updated class diagram	Migration of BRD to standard BMS.BRD format	N/A
20050331	2.0.2	Andrew Hearn	Context Update	Updated the context listed within the document	N/A

Date of Change	Version	Changed By	Reason for Change	Summary of Change	Model Build #
20070208	3.0.0	John Ryu	Updated BMS into template version 1.3 CR 06-283 CR 06-303 CR 06-334		MDL P4CL: 9016  BSD P4CL: 9052
20070314	3.0.1	John Ryu	Based on Peer Review 9059  eCom BRG Motioned, and submitted for TSD Development		BSD P4CL: 9101
20070412	3.0.2	John Ryu	Post for Public Review	Upgraded to BMS Template Version 1.8	BSD P4CL: 9233
20070503	3.0.3	John Ryu	Update based on Public Review	Noted in section 10	MDL P4CL: 9289  BSD P4CL: 9290
20070525	3.0.4	John Ryu	eCom BRG eballot approved	Updated BMS to approved	BMS p4cl: 9460

## Disclaimer

Whilst every effort has been made to ensure that the guidelines to use the GS1 standards contained in the document are correct, GS1 and any other party involved in the creation of the document HEREBY STATE that the document is provided without warranty, either expressed or implied, of accuracy or fitness for purpose, AND HEREBY DISCLAIM any liability, direct or indirect, for damages or loss relating to the use of the document. The document may be modified, subject to developments in technology, changes to the standards, or new legal requirements. Several products and company names mentioned herein may be trademarks and/or registered trademarks of their respective companies.

# Table of Contents

<b>1. Business Domain View .....</b>	<b>5</b>
1.1. Problem Statement / Business Need .....	5
1.2. Objective.....	5
1.3. Audience.....	5
1.4. References .....	5
1.5. Acknowledgements .....	6
1.5.1. BRG Work Group .....	6
1.5.2. Design Team Members .....	7
<b>2. Business Context .....</b>	<b>7</b>
<b>3. Additional Technical Requirements Analysis.....</b>	<b>8</b>
3.1. Technical Requirements (optional).....	8
<b>4. Business Transaction View .....</b>	<b>8</b>
4.1. Business Transaction Use Case Diagram .....	8
4.2. Use Case Description.....	8
4.3. Business Transaction Activity Diagram(s).....	9
4.4. Business Transaction Sequence Diagram(s) (optional).....	9
<b>5. Information Model (Including GDD Report) .....</b>	<b>10</b>
5.1. GDD Report.....	10
5.2. Class Diagrams .....	16
5.2.1. Class Diagram Debit Credit Advice.....	16
5.3. Code Lists.....	17
<b>6. Business Document Example .....</b>	<b>17</b>
<b>7. Implementation Considerations.....</b>	<b>17</b>
<b>8. Testing.....</b>	<b>17</b>
8.1. Pass / Fail Criteria .....	17
8.2. Test Data .....	18
<b>9. Appendices .....</b>	<b>19</b>
<b>10. Summary of Changes.....</b>	<b>19</b>

# 1. Business Domain View

## 1.1. Problem Statement / Business Need

As part of the trade of goods and services process, situations may arise when adjustments are necessary to reflect the actual flow, price, receipt or other agreements for the use of goods and services between trading parties. Situations such as (but not limited to):

- goods being received damaged
- incorrect quantity of goods are received
- retroactive volume discounts

result in the need for one party to notify the other trading party that an adjustment is being applied, resulting in a change to the monetary amount owed/due between the parties.

The goal of this 'Debit Or Credit Advice' use case is to provide an electronic advice to a trading partner that a monetary adjustment - debit or credit amount value - is being applied to the purchase of goods or services.

## 1.2. Objective

To supply the detail design of the (specific) business transaction needed to meet the requirements of the referenced BRAD(s).

## 1.3. Audience

The audience of the standards would be any participant in the global supply chain. This would include retailers, manufacturers, service providers, and other third parties

## 1.4. References

Reference Number	Reference Name	Description
[Ref1]	Debit Credit Advice Enhancements	Version 0.0.1
[Ref2]	Common Library	BMS Release Version 2.3
[Ref3]	BRD Debit or Credit Advice	BRD Version 1.1
[Ref 4/ 8957]	BRAD Debit or Credit Advice Enhancement	BRAD Version 0.0.1

## 1.5. Acknowledgements

List of the individuals—and their companies—who participated in the creation, review and approval of this BMS.

### 1.5.1. BRG Work Group

Function	Name	Company / organisation
BRG Work Group Chair	Open	
BRG Work Group Manager	John RYU	GS1
BRG Work Group Member	Ryohei ARIGA	Procter & Gamble
BRG Work Group Member	Rick BATTISTA	Roadway
BRG Work Group Member	Maureen BONITO	ISI Mars
BRG Work Group Member	Richard CHRESTA	GS1 Switzerland
BRG Work Group Member	Marilyn DODD	3M
BRG Work Group Member	Brad DOMINY	Wells Fargo Century
BRG Work Group Member	Sue DONARSKI	Schneider
BRG Work Group Member	Karina DUVINGER	GS1 Sweden
BRG Work Group Member	Carol EDISON	General Mills
BRG Work Group Member	Chris EMMENT	Compass Services
BRG Work Group Member	Suzanne FASSLER	JC Penney
BRG Work Group Member	Don FLINT	CHEP
BRG Work Group Member	Klaus FORDERER	GS1 Germany
BRG Work Group Member	Wayne GINGERICH	Werner
BRG Work Group Member	Anders GRANGARD	GS1
BRG Work Group Member	Steve HAMMOND	Compass
BRG Work Group Member	Rob HEATHER	GS1 UK
BRG Work Group Member	Tom HEIST	GS1
BRG Work Group Member	Sandra HURD	CIT
BRG Work Group Member	James JENNINGS	Procter & Gamble
BRG Work Group Member	Andy KIM	GS1 Australia
BRG Work Group Member	Fred KEMPKE	Unilever
BRG Work Group Member	Rita LAUR	GS1 Canada
BRG Work Group Member	Bill LOHSE	Data Tronics
BRG Work Group Member	Ana Paula MANIERO	GS1 Brazil
BRG Work Group Member	Eric MAREE	Accenture
BRG Work Group Member	Shanda MARVIN	Procter & Gamble

Function	Name	Company / organisation
BRG Work Group Member	James MORRISON	Whirlpool
BRG Work Group Member	Dana MORTON	Fedex
BRG Work Group Member	Frank NAPOLI	LMI
BRG Work Group Member	Eileen NAUSED	McCormick
BRG Work Group Member	Debby NOYES	Johnsonville
BRG Work Group Member	Marie PERRY	Coca Cola
BRG Work Group Member	Natascha POTTIER	GS1 France
BRG Work Group Member	Rich RICHARDSON	GS1 US
BRG Work Group Member	Steve ROSENBERG	GS1 US
BRG Work Group Member	Kazuya SATO	GS1 Japan
BRG Work Group Member	Jon SHARRATT	Target
BRG Work Group Member	Andy SIOW	GS1 Singapore
BRG Work Group Member	Tan Jin SOON	GS1 Singapore
BRG Work Group Member	Ste SPAAN	GS1 Netherlands
BRG Work Group Member	Jacques VERMEULEN	GS1 Netherlands
BRG Work Group Member	Chi YANG	UPS

### 1.5.2. Design Team Members

Function	Name	Organisation
Modeler	John Ryu	GS1
XML Technical Designer	Dipan Anarkat	GS1
EANCOM Technical Designer	Not Applicable	
Peer Reviewer	Brian Bennett	GS1

## 2. Business Context

Context Category	Value(s)
Industry	All
Geopolitical	Global
Product	All
Process	Pay
System Capabilities	GS1 System
Official Constraints	None

### 3. Additional Technical Requirements Analysis

This section documents the analysis of additional technical requirements.

#### 3.1. Technical Requirements (optional)

Number	Statement	Rationale
	No Technical Requirements	

### 4. Business Transaction View

#### 4.1. Business Transaction Use Case Diagram

No Use Case Diagram

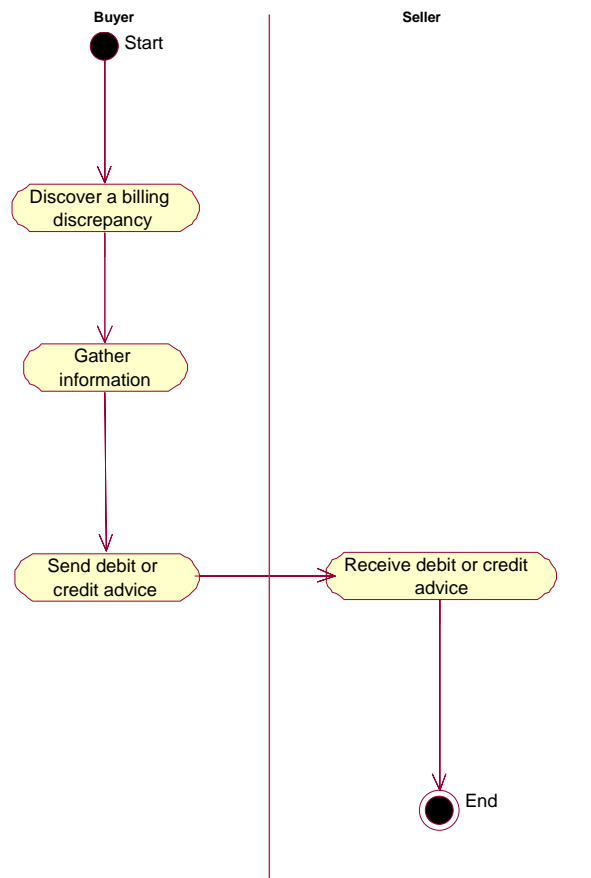
#### 4.2. Use Case Description

Use Case ID	UC-1												
Use Case Name	Initiates debit or credit advice												
Use Case Description	Buyer or Seller discovers a discrepancy or needs to advise a trading party regarding one or more adjustments related to item(s) or service(s) on previously traded information.												
Actors (Goal)	The two general actors in the 'Debit Or Credit Advice' process are the Buyer and the Seller. Depending on the specific nature of the relationship, other players may have a role, such as a third party. A defined third party for this message may be a Carrier, who may have a relationship with the Buyer or Seller, or both.												
Performance Goals	None												
Preconditions	The Buyer and Seller have an established relationship, and have entered into an agreement for the trade of goods or services, which have defined terms and conditions for the trade.												
Post conditions	None												
Scenario	<p><b>Begins when...</b></p> <p>The Buyer or Seller discovers a discrepancy or needs to advise the other trading party regarding adjustments related to item(s) or service(s) on previously traded information.</p> <p><b>Continues with...</b></p> <table><tr><th>Step #</th><th>Actor</th><th>Activity Step</th></tr><tr><td>1</td><td>Buyer or Seller</td><td>Discovers a discrepancy on previously traded information regarding goods or services.</td></tr><tr><td>2</td><td>Buyer or Seller</td><td>Gathers the information necessary to properly give information detail to trading partner.</td></tr><tr><td>3</td><td>Buyer or Seller</td><td>Issues appropriate Debit or Credit Advice document.</td></tr></table> <p><b>Ends when...</b> the Buyer or Seller issues a Debit Or Credit Advice to rectify previous transactional information, which is received by the affected party.</p>	Step #	Actor	Activity Step	1	Buyer or Seller	Discovers a discrepancy on previously traded information regarding goods or services.	2	Buyer or Seller	Gathers the information necessary to properly give information detail to trading partner.	3	Buyer or Seller	Issues appropriate Debit or Credit Advice document.
Step #	Actor	Activity Step											
1	Buyer or Seller	Discovers a discrepancy on previously traded information regarding goods or services.											
2	Buyer or Seller	Gathers the information necessary to properly give information detail to trading partner.											
3	Buyer or Seller	Issues appropriate Debit or Credit Advice document.											



Alternative Scenario			
	Step #	Actor	Activity Step
	1	No Alternative Scenario	
Related Requirements	1. No Related Requirements		
Related Rules	2. No Related Rules		

### 4.3. Business Transaction Activity Diagram(s)



### 4.4. Business Transaction Sequence Diagram(s) (optional)

No Sequence Diagram

## 5. Information Model (Including GDD Report)

### 5.1. GDD Report

Class (ABIE)	Attribute (BBIE)	Association (ASBIE)	Secondary Class	Definition	Multiplicity	Data Type Components	Related Requirements
BuyerCarrierPartyIdentification				This identifies the buyer's and carrier's party identification			Debit Or Credit Advice BRD V 1.1 14.04.2004
		buyerIdentification	PartyIdentification	Unique identifier for the Buyer.	1..1		Debit Or Credit Advice BRD V 1.1 14.04.2004
		carrierIdentification	PartyIdentification	Unique identifier for the company which physically transports goods from one place to another.	1..1		Debit Or Credit Advice BRD V 1.1 14.04.2004
BuyerSellerPartyIdentification				This identifies the buyer's and seller's party identification.			Debit Or Credit Advice BRD V 1.1 14.04.2004
		buyerIdentification	PartyIdentification	Party to which merchandise is sold	1..1		Debit Or Credit Advice BRD V 1.1 14.04.2004
		sellerIdentification	PartyIdentification	Party, which sells products or services to a buyer.	1..1		Debit Or Credit Advice BRD V 1.1 14.04.2004
DebitCreditAdvice				Buyer or Seller discovers a discrepancy or needs to advise a trading party regarding one or more adjustments related to item(s) or service(s) on previously traded information.			Debit Or Credit Advice BRD V 1.1 14.04.2004

Class (ABIE)	Attribute (BBIE)	Association (ASBIE)	Secondary Class	Definition	Multiplicity	Data Type Components	Related Requirements
	AdditionalDebitCreditInstruction			<p>A text field which cannot be codified, for inclusion of comments related to message header and / or line level.</p> <p>This field should only be used in exception circumstances if the information cannot be codified.</p> <p>Examples of free text field. Debit or Credit Advice Header: Faulty products taken by Sales Rep Items disposed of, not returned Claimed in error</p>	0..1	LongDescription	BRAD Debit or Credit Advice Enhancements Version 0.0.1 BR#2
		None	BuyerCarrierPartyIdentification	This information on BuyerCarrierPartyIdentification for DebitCreditAdvice.	1..1		Debit Or Credit Advice BRD V 1.1 14.04.2004
		None	BuyerSellerPartyIdentification	This information on BuyerSellerPartyIdentification for DebitCreditAdvice.	1..1		Debit Or Credit Advice BRD V 1.1 14.04.2004
		debitCreditDetail	DebitCreditLineItem	Sequence number that identifies the line.	1..*		Debit Or Credit Advice BRD V 1.1 14.04.2004
		None	Document	This information on Document for DebitCreditAdvice.	1..1		Debit Or Credit Advice BRD V 1.1 14.04.2004
		debitCreditAdviceIdentification	EntityIdentification	A unique identifier for the debit credit advice message	1..1		Debit Or Credit Advice BRD V 1.1 14.04.2004

Class (ABIE)	Attribute (BBIE)	Association (ASBIE)	Secondary Class	Definition	Multiplicity	Data Type Components	Related Requirements
		None	ShipToLogistics	<p>Addition of an optional field for Delivered To Name and Delivered To Address. There may be a situation when goods are received and there is no perceived issue, but later (potentially weeks/months) the goods are opened and found to be damaged. These goods are then shipped to a central returns warehouse and then in bulk returned to the supplier. For the supplier, they need to know which store or which building site the goods were originally shipped to. The building site would have been a one off ship to address and therefore would not have a GLN allocated to it.</p> <p>Delivered to Name and Address is defined as the name and address information for the place the goods were transported to.</p>	0..1		BRAD Debit or Credit Advice Enhancements Version 0.0.1 BR#1
		None	SellerCarrierPartyIdentification	This information on SellerCarrierPartyIdentification for DebitCreditAdvice.	1..1		Debit Or Credit Advice BRD V 1.1 14.04.2004
		netSummary	SummaryInformation	The net settlement amount associated with the debit or credit.	1..1		Debit Or Credit Advice BRD V 1.1 14.04.2004
DebitCreditLineDetail				Allows a sender to provide information of multiple adjustments to a line item from the same referenced document.			Debit Or Credit Advice BRD V 1.1 14.04.2004
	alignedPrice			Price expressed as a monetary value. Through alignment between parties, this price has been previously been agreed to.	0..1	Quantity. Content Quantity Unit. Code Quantity Unit. Code List Agency. Identifier	Debit Or Credit Advice BRD V 1.1 14.04.2004

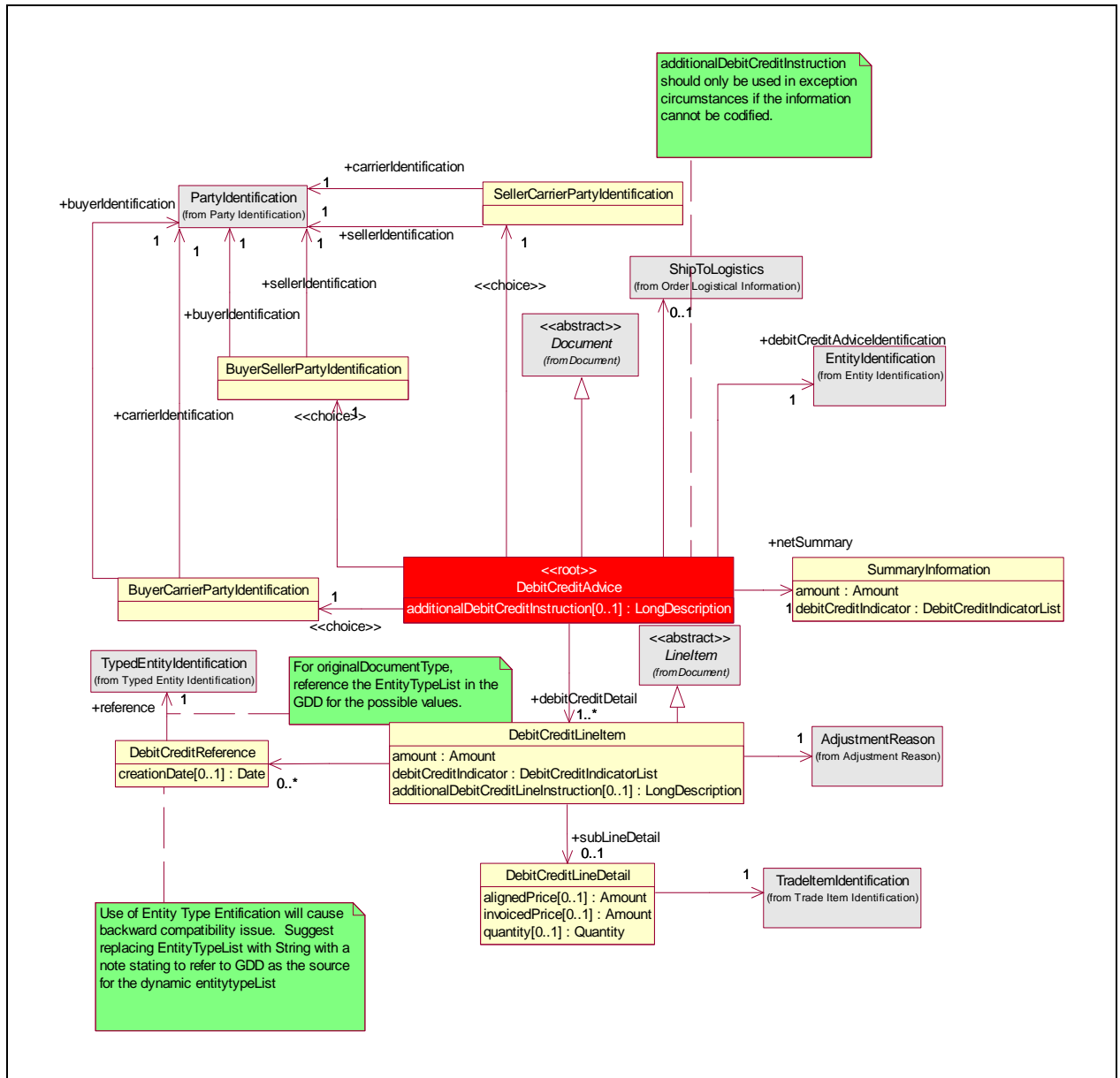
Class (ABIE)	Attribute (BBIE)	Association (ASBIE)	Secondary Class	Definition	Multiplicity	Data Type Components	Related Requirements
	invoicedPrice			Monetary value of the item or service noted on the invoice.	0..1	Quantity. Content Quantity Unit. Code Quantity Unit. Code List Agency. Identifier	Debit Or Credit Advice BRD V 1.1 14.04.2004
	quantity			Number of units required of a product or service.	0..1	Quantity. Content Quantity Unit. Code Quantity Unit. Code List Agency. Identifier	BRAD Debit or Credit Advice Enhancements Version 0.0.1 BR#3
		None	TradeItemIdentification	This information on TradeItemIdentification for DebitCreditLineDetail.	1..1		Debit Or Credit Advice BRD V 1.1 14.04.2004
DebitCreditLineItem				Provides the Debit Credit Advice Line Item Details			Debit Or Credit Advice BRD V 1.1 14.04.2004
	AdditionalDebitCreditLineInstruction			<p>A text field which cannot be codified, for inclusion of comments related to message header and / or line level.</p> <p>This field should only be used in exception circumstances if the information cannot be codified.</p> <p>Debit or Credit Advice Line: Aerosol doesn't work Seeds have passed expiry date Return due to customer dissatisfaction</p>	0..1	LongDescription	BRAD Debit or Credit Advice Enhancements Version 0.0.1 BR#2
	amount			Monetary amount of debit or credit adjustment	1..1	Indicator. Content Indicator. Format. Text	Debit Or Credit Advice BRD V 1.1 14.04.2004
	debitCreditIndicator			Indicator Value indicates whether amount is a debit or credit.	1..1	Indicator. Content Indicator. Format. Text	Debit Or Credit Advice BRD V 1.1 14.04.2004

Class (ABIE)	Attribute (BBIE)	Association (ASBIE)	Secondary Class	Definition	Multiplicity	Data Type Components	Related Requirements
		None	AdjustmentReason	This information on AdjustmentReason for DebitCreditLineItem.	1..1		Debit Or Credit Advice BRD V 1.1 14.04.2004
		subLineDetail	DebitCreditLineDetail	Allows a sender to provide information of multiple adjustments to a line item from the same referenced document.	0..1		Debit Or Credit Advice BRD V 1.1 14.04.2004
		None	DebitCreditReference	Document(s) to which this Debit or Credit refers.	0..*		Debit Or Credit Advice BRD V 1.1 14.04.2004
		None	LineItem	This information on LineItem for DebitCreditLineItem.	1..1		Debit Or Credit Advice BRD V 1.1 14.04.2004
DebitCreditReference				Provides the Debit or Credit Line Item reference.			Debit Or Credit Advice BRD V 1.1 14.04.2004
	creationDate			The date that a settlement in response to a request for payment was created.	0..1	Code. Content Code List. Agenc. Identifier Code List. Agency Name. Text	Debit Or Credit Advice BRD V 1.1 14.04.2004
		reference	TypedEntityIdentification	Identification of the referenced document.	1..1		Debit Or Credit Advice BRD V 1.1 14.04.2004
SellerCarrierPartyIdentification				!! identifies the carrier's and seller's party identification			Debit Or Credit Advice BRD V 1.1 14.04.2004
		carrierIdentification	PartyIdentification	Unique identifier for the company which physically transports goods from one place to another.	1..1		Debit Or Credit Advice BRD V 1.1 14.04.2004
		sellerIdentification	PartyIdentification	Unique identifier for the Seller.	1..1		Debit Or Credit Advice BRD V 1.1 14.04.2004
SummaryInformation				Summary level (total) for debit and/or credit advice.			Debit Or Credit Advice BRD V 1.1 14.04.2004

Class (ABIE)	Attribute (BBIE)	Association (ASBIE)	Secondary Class	Definition	Multiplicity	Data Type Components	Related Requirements
	amount			Monetary amount of debit or credit.	1..1	Indicator. Content Indicator. Format. Text	Debit Or Credit Advice BRD V 1.1 14.04.2004
	debitCreditIndicator			Indicator Value indicates whether amount is a debit or credit.	1..1	Indicator. Content Indicator. Format. Text	Debit Or Credit Advice BRD V 1.1 14.04.2004

## 5.2. Class Diagrams

### 5.2.1. Class Diagram Debit Credit Advice





### 5.3. Code Lists

Code List Name	Code List Description
DebitCreditIndicatorList	
Code Name	Code Description
CREDIT	The deduction of a payment made by a debtor from an amount due. The right-hand side of an account on which such amounts are entered.
DEBIT	An accounting entry acknowledging sums that are owing The left-hand side of an account on which such entries are made opposite a credit.

## 6. Business Document Example

- The following is an example of an invoice message. The message is sent out on April 5th at 11 AM. The message is identified with the unique identifier CR03001 and is initiated by the buyer.
- The credit advice is sent by the buyer (9377771021131) to the seller (9377771056465).
- In this example, it is a credit advice for 3000.00. The Buyer advises that the goods have already been taken by a sellers Sales Rep, so an adjustment for credit for the buyer for 3000.00 is required
- The goods are to be shipped to
  - Brian Smith
  - 12 Gembrook Road
  - Melbourne Australia
- Contact information
  - Material Planning
  - Phone: 609.275.7575

## 7. Implementation Considerations

No Implementation Consideration

## 8. Testing

### 8.1. Pass / Fail Criteria

No.	Test Criteria	Related Requirement	Design Element	Pass Criteria	Fail Criteria
1	None				

## 8.2. Test Data

DebitCreditAdvice	
- creationDateTime	2005-04-05T11:00:00
- documentStatus	ORIGINAL
Entity Identification (+debitCreditAdviceIdentification)	
uniqueCreatorIdentification	CR03001
PartyIdentification (+contentOwner)	
gLN	9377771021131
additionalDebitCreditInstruction	Faulty products taken by Sales Rep
BuyerSellerPartyIdentifiacion	
- PartyIdentification (+buyerIdentification)	
gLN	9377771021131
- PartyIdentification (+sellerIdentification)	
gLN	9377771056465
ShipToLogistics	
ShipToNonCommercial	
Contact	
personOrDepartmentName	Building Site
NameAndAddress	
City	Melbourne
countryCode	AU
langaugeOfTheParty	English
name	Brian Smith
State	Victoria
streetAddressOne	12 Gembrook Road
Contact	
MultiDescription (+personOrDepartmentName)	Material Planning, ENG
CommunicationChannel	
communicationNumber	609.275.7575
communicationChannelCode	TELEPHONE
amount	3000.00
debitCreditIndicator	CREDIT
DebitCreditLineItem (+debitCreditDetail)	
LineItem	
lineItemNumber	1
- Amount	3000.00

DebitCreditAdvice	
- debitCreditIndicator	CREDIT
- additionalDebitCreditLineInstruction	Have passed expiry date
DebitCreditLineDetail (+subLineDetail)	
- quantity	1000
-UOM	Packs
AdjustmentReason	
messageReason	Trading partner agreement 0123
sourceCode	123
TypeEntityIdentification (+reference)	
uniqueCreatorIdentification	DEB1111
DebitCreditReference	
creationDate	2005-04-05T10:00:00

## 9. Appendices

None

## 10. Summary of Changes

Change	BSD Version	Associated CR Number
<b>DebitCreditAdvice</b> Added additionalDebitCreditInstruction[0..1]:Description Added association(0..1) to ShipToLogistics <b>DebitCreditLineItem</b> Added additionalDebitCreditLineInstruction[0..1]:Description <b>DebitCreditLineDetail</b> Changed datatype in Quantity[0..1]:Float→Quantity	3.0..0	06-000283 06-000334 06-000303
Updated GDD Platform to include Related Requirements Removed (!) from GDD Report	3.0.1	Based on Peer Review
Upgraded to BMS Template Version 1.8	3.0.2	
Changed data types from Description→LongDescription to allow for longer text values. ■ additionalDebitCreditInstruction ■ additionalDebitCreditLineInstruction	3.0.3	Based on public review