

sBusiness Message Standard (BMS)

for

Plan / Exception Criteria

BRG: Plan

Version:2.0.3

Date: 31/03/2005



Change Request Reference

Refer to Change Request (CR) Number(s):	
CR Submitter(s):	
Date of CR Submission to GSMP:	

Business Requirements Document (BRAD) Reference

BRAD Title: Exception Criteria – Business Requirement Document
BRAD Date: 01/07/2004
BRAD Version: 1.3.4

BRAD Title:
BRAD Date:
BRAD Version:

Document Summary

Document Title:	BMS For Plan/Exception Criteria
Document Version	2.0.3
Owner:	Plan BRG
Status:	(Check one box) <input type="checkbox"/> DRAFT <input checked="" type="checkbox"/> Approved
BMS Template Version:	1.0
Targeted BMS Publication Version	2.0.2

Document Change History

Date of Change	Version	Changed By	Reason for Change	Summary of Change	Model Build #
31/03/2005	2.0.1	Alice Aguemon	Initial Version in BMS/BSD template	Migration of BRD to standard BMS/BSD format	N/A
31/03/2005	2.0.2	Andrew Hearn	Context Update	Updated the context listed within the document	N/A
23/04/2007	2.0.3	Giovanni Biffi	Editorial Changes	Minor Editorial Changes to the Document	N/A

Business Message Standard

Table of contents

Chapter	Page
1 Business Solution Design	7
1.1 Business Domain View.....	7
1.1.1 Problem Statement / Business Need.....	7
1.1.2 Objective.....	7
1.1.3 Audience.....	8
1.1.4 Artefacts	8
1.1.5 References	8
1.1.6 Acknowledgements	9
1.1.7 BRG Members.....	9
1.1.8 ITRG Members	9
1.1.9 Task/Project Group Participants (<i>where applicable</i>)	9
1.1.10 Design Team Members	9
1.2 Business Context	10
1.3 Additional Technical Requirements Analysis	10
1.3.1 Technical Requirements (optional).....	10
1.4 Business Transaction View	11
1.4.1 Business Transaction Use Case Diagram.....	11
1.4.2 Use Case Description.....	Error! Bookmark not defined.
1.4.3 Business Transaction Activity Diagram(s)	13
1.4.4 Business Transaction Sequence Diagram(s) (optional)	14
1.5 Information Model (including GDD Report)	15
1.5.1 Data Description:	15
1.5.2 GDD Report :	18
1.5.3 Class Diagrams	26
1.5.4 Code Lists.....	Error! Bookmark not defined.
1.6 Business Document Example	29
1.7 Implementation Considerations	30
1.8 Testing.....	30
1.8.1 Pass / Fail Criteria	30
1.8.2 Test Data	30
1.9 Appendices.....	31
1.10 Summary of Changes.....	31

2 XML Technical Solution 32

1 Business Solution Design

1.1 Business Domain View

1.1.1 Problem Statement / Business Need

Collaborative Planning Forecasting and Replenishment (CPFR®) is a well documented nine step process developed and maintained by the Voluntary Interindustry Commerce Standards Association (VICS) for use by trading partners.

In the CPFR® process exception criteria define the threshold for variances, beyond which an exception message should be triggered.

The Exception Criteria Business Requirements Document is the output of the VICS CPFR®, GCI, the Plan BRG (Business Requirements Group) and EAN ECEG (Electronic Commerce Expert Group). It is the responsibility of the BRG's to provide the business requirements for the process of the creation and maintenance of the business and data models. The BRG's develop and maintain business process models and supporting use case diagrams, class diagrams and data requirements for a specific business function in a global electronic commerce environment. The BRG's review and resolve change requests. The BRG's provide guidance for the technical application of new business processes and changes to existing business processes. Currently, BRG's exist for the following business processes: Align Data, Plan, Order, Despatch, Pay, After Sales Services, Asset Management, Manufacturing and Point Of Service. EAN (ECEG) covers similar functionality, through a pool of experts that liaises with the local users, ensuring the effective gathering of the business requirements from its network of national Member Organisations world-wide.

Exception criteria are rules that describe the thresholds for forecast variance, product activity, and performance history beyond which exceptions should be triggered.

CPFR® implementations exchange exception criteria so that their respective exception engines can use the same rules to evaluate data, and trigger identical exceptions in parallel.

Forecast item exception criteria may be restricted to a single component of a forecast (for example, a variance in the promotional component of two sales forecasts), or they can compare totals. The effective dates for an exception describe a horizon in which a criterion is valid.

CPFR® is the registered trademark of VICS, the Voluntary Interindustry Commerce Standards Association

1.1.2 Objective

The objective of this BRD is to document a process-to-data approach. The Unified Modelling Language (UML) is used for notation. Processes are clearly understood because of the use of formal modelling with the UML models. Agreed to models permit the application of the data elements to support the processes. The biggest benefit of this process-to-data approach is the alignment of the model to fit the business need.

1.1.3 Audience

The audience for this document is anyone involved in collaborative planning, forecasting and replenishment.

To better understand this business requirements document the audience should become familiar with the VICS CPFR® Process, the VICS CPFR® XML Messaging Model, June 13, 2001 and VICS Collaborative Planning Forecasting and Replenishment (CPFR®), Global Commerce Initiative Recommendation, June 30, 2001 as these documents provide the basis and context of the business requirements.

1.1.4 Artefacts

Artefact name	State	Artefact / State description

1.1.5 References

Reference Name	Description
EAN•UCC Global Business Model (Process and Data), "The Trade Of Goods and Services", October 1999	
VICS CPFR® XML Messaging Model, June 13, 2001	
VICS Collaborative Planning Forecasting and Replenishment (CPFR®), Global Commerce Initiative Recommendation, June 30, 2001	

1.1.6 Acknowledgements

1.1.6.1 BRG Members

Function	Name	Company
Plan BRG Co-Chair	Not filled in the previous BRD	
Plan BRG Member	Not filled in the previous BRD	
Plan BRG Member		
Plan BRG Member		
Plan BRG Member		
Plan BRG Manager		

1.1.6.2 ITRG Members

Function	Name	Company / organisation
ITRG Chair	None	
ITRG Member	None	
ITRG Member	None	
ITRG Member	None	
...		

1.1.6.3 Task/Project Group Participants (*where applicable*)

Function	Name	Company / organisation
Participant	None	
Participant	None	
Participant	None	
...		

1.1.6.4 Design Team Members

Function	Name	Organisation
Modeller		
XML Technical Designer		
EANCOM Technical Designer		
Peer Reviewer		

1.2 Business Context

Context Category	Value(s)
Industry	All
Geopolitical	All
Product	All
Process	Plan
System Capabilities	EAN.UCC
Official Constraints	None

1.3 Additional Technical Requirements Analysis

1.3.1 Technical Requirements (optional)

(User Interface, Security, Performance, Quality, etc.)

Number	Statement	Rationale

1.4 Business Transaction View

1.4.1 Business Transaction Use Case Diagram

Use Case ID	UC-1
Use Case Name	Request Exception criteria
Use Case Description	Not filled in the previous BRD
Actors (Goal)	<ul style="list-style-type: none">Exception Notification is a two-actor system involving a buyer and a seller.
Performance Goals	<i>Goals related to technical requirements</i> None
Preconditions	Both trading partners agree on the exception criteria and are implementing CPFR®.
Post conditions	Success : Exception criteria triggers an exception notification for variances beyond threshold limits. Failure : Variances do not trigger an exception notification.
Scenario	<p>Begins when the development of a collaborative arrangement and implementation of CPFR® is done.</p> <p>Continues with...</p> <p>1 Both trading partners have established the buyer and seller exception criteria as part of CPFR® Step 1 ("Develop Collaboration Arrangement" includes the identification of buyer and seller exception criteria. The exception criteria establish the exception triggers for the exception notification).</p> <p>2 Both trading partners are implementing CPFR®</p> <p>3 Both trading partners are collecting and evaluating data</p> <p>4 A variance exceeding the assigned threshold criteria occurs</p> <p>5 An exception is triggered</p> <p>Ends when...the implementation of the exception criteria against operational, metric and forecast performance is done.</p>

Business Solution Design

Alternative Scenario	There are no alternative scenarios. None
Related Requirements	None
Related Rules	<i>Business rules associated with use case.</i> None

Business Solution Design

1.4.2 Business Transaction Activity Diagram(s)

Not filled in the previous BRD

Business Solution Design

1.4.3 Business Transaction Sequence Diagram(s) (optional)

Not filled in the previous BRD

Business Solution Design

1.5 Information Model (including GDD Report)

1.5.1 Data Description:

Class (ABIE)	Attribute (BBIE)	Association (ASBIE)	Secondary Class	Related Requirements
CollaborativeTradeItem				BRD for Exception Criteria Version 1.3.4, 01.07.2004
		buyerLocation	PartyIdentification	BRD for Exception Criteria Version 1.3.4
		sellerLocation	PartyIdentification	BRD for Exception Criteria Version 1.3.4
		product	TradeItemIdentification	BRD for Exception Criteria Version 1.3.4
ExceptionCriteria				BRD for Exception Criteria Version 1.3.4
		criterion	ExceptionCriterion	BRD for Exception Criteria Version 1.3.4
		None	PlanDocument	BRD for Exception Criteria Version 1.3.4
ExceptionCriterion				BRD for Exception Criteria Version 1.3.4
	autoResolution-Rules			BRD for Exception Criteria Version 1.3.4
	collaborationPriority			BRD for Exception Criteria Version 1.3.4
	criterionStatus			BRD for Exception Criteria Version 1.3.4
	exceptionValue-Comparison			BRD for Exception Criteria Version 1.3.4
		item	CollaborativeTradeItem	BRD for Exception Criteria Version 1.3.4
		None	ForecastAccuracyEx-	BRD for Exception Criteria

Business Solution Design

Class (ABIE)	Attribute (BBIE)	Association (ASBIE)	Secondary Class	Related Requirements
			ceptionCriterion	Version 1.3.4
		None	ForecastComparison-ExceptionCriterion	BRD for Exception Criteria Version 1.3.4
		None	MetricExceptionCriterion	BRD for Exception Criteria Version 1.3.4
		threshold	MultiMeasurement-Value	BRD for Exception Criteria Version 1.3.4
		None	OperationalExceptionCriterion	BRD for Exception Criteria Version 1.3.4
		effectiveDate	TimePeriodDue	BRD for Exception Criteria Version 1.3.4
ForecastAccuracyExceptionCriterion				BRD for Exception Criteria Version 1.3.4
		None	ForecastDataItemExceptionCriterion	BRD for Exception Criteria Version 1.3.4
ForecastComparisonExceptionCriterion				BRD for Exception Criteria Version 1.3.4
	comparison-DataSource			BRD for Exception Criteria Version 1.3.4
		None	ForecastDataItemExceptionCriterion	BRD for Exception Criteria Version 1.3.4
ForecastDataItemExceptionCriterion				BRD for Exception Criteria Version 1.3.4
	dataSource			BRD for Exception Criteria Version 1.3.4
	forecastPurpose			BRD for Exception Criteria Version 1.3.4
	forecastType			BRD for Exception Criteria Version 1.3.4
	timeDelta-DaysQuantity			BRD for Exception Criteria Version 1.3.4

Business Solution Design

Class (ABIE)	Attribute (BBIE)	Association (ASBIE)	Secondary Class	Related Requirements
MetricExceptionCriterion				BRD for Exception Criteria Version 1.3.4
	metricType			BRD for Exception Criteria Version 1.3.4
MultiMeasurementValue				BRD for Exception Criteria Version 1.3.4
	measurementValue			BRD for Exception Criteria Version 1.3.4
OperationalException-Criterion				BRD for Exception Criteria Version 1.3.4
	activityType			BRD for Exception Criteria Version 1.3.4
PlanDocument				BRD for Exception Criteria Version 1.3.4
	dataSourceCode			BRD for Exception Criteria Version 1.3.4
	plannerIdentification			BRD for Exception Criteria Version 1.3.4
		None	Document	BRD for Exception Criteria Version 1.3.4
		buyer	PartyIdentification	BRD for Exception Criteria Version 1.3.4
		seller	PartyIdentification	BRD for Exception Criteria Version 1.3.4
		period	TimePeriodDue	BRD for Exception Criteria Version 1.3.4

Business Solution Design

1.5.2 GDD Report :

(Output from GDD should be pasted in this section.)

Class (ABIE)	Attribute (BBIE)	Association (ASBIE)	Secondary Class	Official Dictionary Entry Name	Definition	Multi-plicity
CollaborativeTradeItem				Collaborative Item. Details	!! This external class originates in Plan Common and is a class that is used in more than one CPFR class diagram. Collaborative Trade Item identifies the product with the buyer and seller locations.	
		buyerLocation	PartyIdentification	Collaborative Item. Buyer Location. Party Identification	None	1..1
		sellerLocation	PartyIdentification	Collaborative Item. Seller Location. Party Identification	None	1..1
		product	TradeItemIdentification	Collaborative Item. Product. Trade Item Identification	None	1..1
ExceptionCriteria				Exception Criteria. Details	!! The Exception Criteria classes are pictured and are listed here alphabetically. These include: Activity Type Code, Auto Resolution Rules List, Collaborative Item , Collaboration Priority Code, Criterion Status Code, Data Source Code, Exception Criteria, Exception Criterion, Exception Value Comparison Code, Forecast Accuracy Exception Criterion, Forecast Comparison Exception Criterion, Forecast Item Exception Criterion, Forecast Purpose Code,	

Business Solution Design

Class (ABIE)	Attribute (BBIE)	Association (ASBIE)	Secondary Class	Official Dictionary Entry Name	Definition	Multi- plicity
					Forecast Type Code, Measurement, Metric Exception Criterion, Metric Type Code, Operational Exception Criterion, Plan Document, Time Period	
		criterion	ExceptionCriterion	Exception Criteria. Criterion. Exception Criteria Line	!! This class links exception criterion for the type of exception, priority, status, comparison code, threshold, effective dates and item to the exception criteria. This class has no attributes.	1..*
		None	PlanDocument	Exception Criteria. Inheritance_ Association. Plan Document	!! This class links exception criterion for the type of exception; priority; status; comparison code; threshold; effective dates and item to the exception criteria. This class has no attributes.	1..1
ExceptionCriterion				Exception Criteria Line. Details	!! This class links exception criterion for the type of exception, priority, status, comparison code, threshold, effective dates and item to the exception criteria. This class has no attributes.	
	autoResolution-Rules			Exception Criteria Line. AutoResolutionRules. Code	An enumeration list of rules for the auto resolution of exceptions shall be available for trading partners that agree to use auto resolution.	0..*
	collaborationPriority			Exception Criteria Line. Collaboration Priority. Collaboration Priority_ Code	!! This external class originates in Collaboration Common. Each exception shall have an assigned collaboration priority code. This class provides the codes. The collaboration	1..1

Business Solution Design

Class (ABIE)	Attribute (BBIE)	Association (ASBIE)	Secondary Class	Official Dictionary Entry Name	Definition	Multi- plicity
					priority code list has the following attributes: Low, Medium and High.	
	criterionStatus			Exception Criteria Line. Criterion Status. Criterion Status_ Code	Each exception criterion shall have an assigned criterion status code. This class provides the codes. The criterion status code list has the following attributes: Deleted, New and Revised.	1..1
	exceptionValue- Comparison			Exception Criteria Line. Exception Value Comparison. Exception Value Comparison_ Code	!! Exception Value Comparison codes shall be established for each exception. This class provides the codes. The Exception Value Comparison Code List has the following attributes: Exceeds Exception Value and Falls Below Exception Value.	1..1
		item	CollaborativeTrade- Item	Exception Criteria Line. Item. Collaborative Item	!! This external class originates in Plan Common and is a class that is used in more than one CPFR class diagram. Collaborative Trade Item identifies the product with the buyer and seller locations.	1..1
		None	ForecastAccuracyEx- ceptionCriterion	Exception Criteria Line. Choice_ Association. Accuracy_ Exception Criteria Line	!! This external class originates in Plan Common and is a class that is used in more than one CPFR class diagram. Collaborative Trade Item identifies the product with the buyer and seller locations.	1..1
		None	ForecastComparison- ExceptionCriterion	Exception Criteria Line. Choice_ Association. Forecast Comparison_ Exception Criteria Line	!! This external class originates in Plan Common and is a class that is used in more than one CPFR class diagram. Collaborative Trade Item identifies the product with the buyer	1..1

Business Solution Design

Class (ABIE)	Attribute (BBIE)	Association (ASBIE)	Secondary Class	Official Dictionary Entry Name	Definition	Multi- plicity
					and seller locations.	
		None	MetricExceptionCrite- rion	Exception Criteria Line. Choice_ Association. Met- ric_ Exception Criteria Line	!! This external class originates in Plan Common and is a class that is used in more than one CPFR class diagram. Collaborative Trade Item identifies the product with the buyer and seller locations.	1..1
		threshold	MultiMeasurement- Value	Exception Criteria Line. Threshold. Multi-unit Meas- ure	!! This external class originates in Plan Common and is a class that is used in more than one CPFR class diagram. Collaborative Trade Item identifies the product with the buyer and seller locations.	1..1
		None	OperationalExcep- tionCriterion	Exception Criteria Line. Choice_ Association. Opera- tional_ Exception Criteria Line	!! This external class originates in Plan Common and is a class that is used in more than one CPFR class diagram. Collaborative Trade Item identifies the product with the buyer and seller locations.	1..1
		effectiveDate	TimePeriodDue	Exception Criteria Line. Date. Time Period	None	0..1
ForecastAccuracyExcep- tionCriterion				Accuracy_ Exception Crite- ria Line. Details	This establishes criterion for one of the two kinds of forecast data item exceptions. This class identifies the exception as a forecast accuracy exception.	
		None	ForecastDataItemEx- ceptionCriterion	Accuracy_ Exception Crite- ria Line. Association. Fore- cast_ Exception Criteria Line	None	1..1
ForecastComparisonEx- ceptionCriterion				Forecast Comparison_ Ex- ception Criteria Line. Details	This establishes the criterion for one of the two kinds of forecast data	

Business Solution Design

Class (ABIE)	Attribute (BBIE)	Association (ASBIE)	Secondary Class	Official Dictionary Entry Name	Definition	Multi- plicity
					item exceptions. This class compares the buyer and seller data source(s) and identifies the time basis of comparison. This class has no attributes.	
	comparison-DataSource			Forecast Comparison_ Exception Criteria Line. Comparison_ Data Source. Data Source_ Code	!! This external class originates in Plan Common and is a class that is used in more than one CPFR class diagram. The source of a forecast data item exception shall be identified. This class provides the codes. The data source code list has the following attributes: Buyer, Seller	1..1
		None	ForecastDataItemExceptionCriterion	Forecast Comparison_ Exception Criteria Line. Association. Forecast_ Exception Criteria Line	None	1..1
ForecastDataItemExceptionCriterion				Forecast_ Exception Criteria Line. Details	This establishes the criterion for one of the three types of exceptions. This class provides criteria for the kind of forecast exception, the identification of the purpose of the forecast, the source of data and the time basis criteria for the exception. The Forecast Data Item Exception Criterion has one attribute: · Time delta days quantity	
	dataSource			Forecast_ Exception Criteria Line. Data Source. Data Source_ Code	!! This external class originates in Plan Common and is a class that is used in more than one CPFR class diagram. The source of a forecast data item exception shall be identified. This class provides the codes.	1..1

Business Solution Design

Class (ABIE)	Attribute (BBIE)	Association (ASBIE)	Secondary Class	Official Dictionary Entry Name	Definition	Multi- plicity
					The data source code list has the following attributes: Buyer, Seller	
	forecastPurpose			Forecast_ Exception Criteria Line. Forecast Purpose. Forecast Purpose Criteria Type_ Code	!! This external class originates in Plan Common and is a class that is used in more than one CPFR class diagram. Each Forecast Data Item Exception Criterion will be assigned a forecast purpose code. The Forecast Purpose Code List has the following attributes: Order forecast, Sales forecast	1..1
	forecastType			Forecast_ Exception Criteria Line. Forecast Type. Forecast Type_ Code	!! This external class originates in Plan Common and is a class that is used in more than one CPFR class diagram. Each Abstract Forecast Data Item will be assigned a forecast type code identifying it as a base, promotional, seasonal or total type of item. The Forecast Type Code List has the following attributes. Base, Promotional, Seasonal, Total	0..1
	timeDelta-DaysQuantity			Forecast_ Exception Criteria Line. Time Delta Days. Quantity		0..1
MetricExceptionCriterion				Metric_ Exception Criteria Line. Details	!! This establishes the criterion for one of the three types of exceptions.	
	metricType			Metric_ Exception Criteria Line. Metric Type. Metric Criteria Type_ Code	!! This external class originates in Plan Common and is a class that is used in more than one CPFR class diagram. This class identifies the metric type code. The metric type code list has the following attributes:	1..1

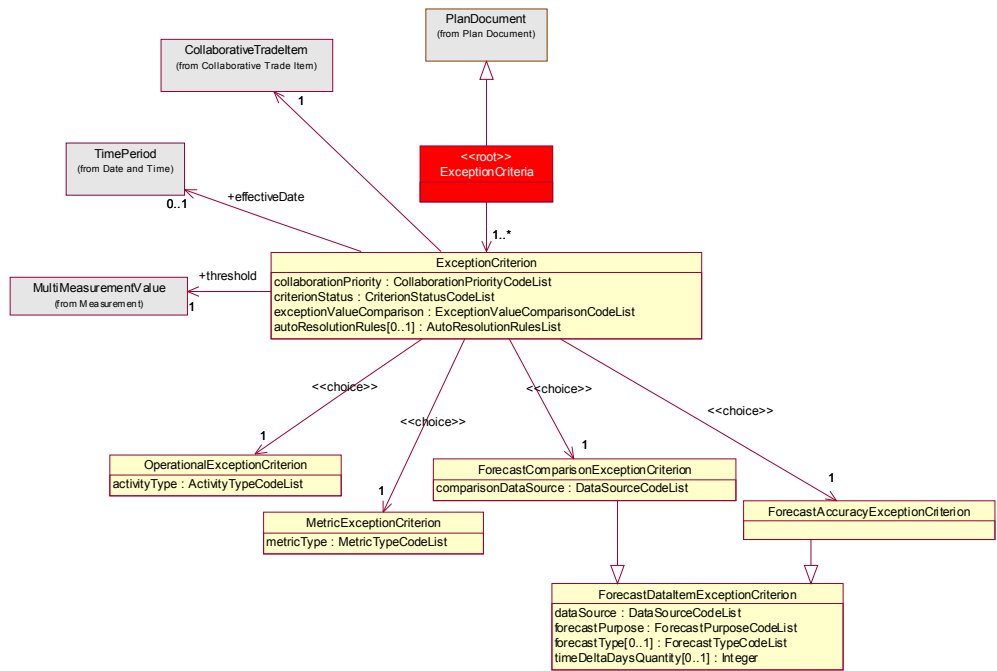
Business Solution Design

Class (ABIE)	Attribute (BBIE)	Association (ASBIE)	Secondary Class	Official Dictionary Entry Name	Definition	Multi- plicity
					Fill rate, Forecast accuracy, Gross margin, In stock, On time delivery, Supply	
MultiMeasurementValue				Multi-unit Measure. Details		
	measurementValue			Multi-unit Measure. Measure.		1..*
OperationalException-Criterion				Operational_ Exception Criteria Line. Details	!! This establishes the criterion for one of the three types of exceptions. This class links the activity type code list to the exception criterion.	
	activityType			Operational_ Exception Criteria Line. Activity Type. Activity Criteria Type_ Code	!! This external class originates in Plan Common and is a class that is used in more than one CPFR class diagram. This class identifies the activity type code for an operational exception. The activity type code list has the following attributes: Canceled orders, Emergency orders , On hand, Orders, Receipts, Sales, Shipments	1..1
PlanDocument				Plan Document. Details	!! This external class originates in Plan Common and is a class that is used in more than one CPFR class diagram. Plan Document class is the EAN•UCC System equivalent to CPFR Message class. This class has an attribute that provides the identification of the planner, identifies the source of the data, the time period for the document and the buyer and seller.	
	dataSourceCode			Plan Document. Data	!! This external class originates in	1..1

Business Solution Design

Class (ABIE)	Attribute (BBIE)	Association (ASBIE)	Secondary Class	Official Dictionary Entry Name	Definition	Multi- plicity
				Source. Data Source_ Code	Plan Common and is a class that is used in more than one CPFR class diagram. The source of a forecast data item exception shall be identified. This class provides the codes. The data source code list has the following attributes: Buyer, Seller.	
	plannerIdentification			Plan Document. Planner Identification. Text		0..1
		None	Document	Plan Document. Association. Electronic_ Document	None	1..1
		buyer	PartyIdentification	Plan Document. Buyer. Party Identification	None	1..1
		seller	PartyIdentification	Plan Document. Seller. Party Identification	None	1..1
		period	TimePeriodDue	Plan Document. Period. Time Period	None	1..1

1.5.3 Class Diagrams



1.5.4 Code Lists

(Note: Code Lists are taken from the GDD though a GDD report)

Code List Name	Code List Description
CriterionStatusCodeList	
Code Name	Code Description
DELETED	N/A
NEW	N/A
REVISED	N/A

Code List Name	Code List Description
ExceptionValueComparisonCodeList	
Code Name	Code Description
EXCEEDS_EXCEPTION_VALUE	N/A
FALLS_BELOW_EXCEPTION_VALUE	N/A

Code List Name	Code List Description
AutoResolutionRulesList	
Code Name	Code Description
DEFAULT_TO_AVERAGE_OF_COMPARED_VALUES	N/A
DEFAULT_TO_BUYERS_VALUE	N/A
DEFAULT_TO_HIGH_VALUE	N/A
DEFAULT_TO_LOW_VALUE	N/A
DEFAULT_TO_SELLERS_VALUE	N/A
MANUAL_RESOLUTION	N/A
MUTUALLY_DEFINED	N/A

Code List Name	Code List Description
DaysOfTheWeeksList	
Code Name	Code Description
Friday	N/A
Monday	N/A
SATURDAY	N/A
SUNDAY	N/A
THURSDAY	N/A
TUESDAY	N/A
WEDNESDAY	N/A

Code List Name	Code List Description
FMCGTradeItemIdentificationList	
Code Name	Code Description
ISBN_NUMBER	N/A
ISSN_NUMBER	N/A
LOTTERY_GAME_NUMBER	N/A
LOTTERY_PACK_BOOK_NUMBER	N/A

Business Solution Design

MANUFACTURER_PART_NUMBER	N/A
NABCA_PRODUCT_CODE	N/A

Code List Name	Code List Description
AdditionalTradeItemIdentification	
Code Name	Code Description
BUYER_ASSIGNED	N/A
INDUSTRY_ASSIGNED	N/A
SUPPLIER_ASSIGNED	N/A

Code List Name	Code List Description
AdditionalPartyIdentificationList	
Code Name	Code Description
BUYER_ASSIGNED_IDENTIFIER_FOR_A_PARTY	N/A
DEA_DRUG_ENFORCEMENT_AGENCY	N/A
DUNS	N/A
DUNS_PLUS_FOUR	N/A
HIN_CANADIAN_HEALTHCARE_IDENTIFICATION_NUMBER	N/A
SCAC	N/A
SELLER_ASSIGNED_IDENTIFIER_FOR_A_PARTY	N/A
TD_LINK_TRADE_DIMENSIONS	N/A
UCC_COMMUNICATION_IDENTIFICATION	N/A
UN_LOCATION_CODE	N/A
USDA_ESTABLISHMENT_NUMBER	N/A

1.6 Business Document Example

Not filled in the previous BRD

Business Solution Design

1.7 Implementation Considerations

Not filled in the previous BRD

1.8 Testing

1.8.1 Pass / Fail Criteria

Unit testing criteria for business solution.

Number	Test Criteria	Related Requirement	Design Element	Pass Criteria	Fail Criteria
1					
2					
3					

1.8.2 Test Data

Test data is detailed in section 1.7.

Business Solution Design

1.9 Appendices

1.10 Summary of Changes

(Details changes to BMS for each version by BMS Section)

Change	BMS Version	Associated CR Number

2. XML Technical Solution ITRG Packet

The Technical Representation of the Business process is documented in a Technical Solution ITRG Packet containing all supplemental XML artefacts and is used by the Information Requirements Group (ITRG) to evaluate the solution. Upon approval from the Information Technical Requirements Group (ITRG), the Technical Solution ITRG Packet is updated to the Technical Solution Implementers Packet and published with the Business

Message Standard at:

http://www.ean-ucc.org/global_smp/ean.ucc_standards.htm.

Technical Solution ITRG Packet Content:

- Business Message Standard (BMS)
- ITRG Review Packet
 - Style Sheet: This HTML has been created using a Style Sheet that is a visual representation of the data. It is not an actual Style Sheet, but an ex-ample of what a Style Sheet may look like.
 - Instance File: The Instance File is an example of what the schema may look like when it includes live data. This can be used as comparison to a completed schema and can serve as a point of reference for development.
 - Technical Level GDD Report

Technical Solution Implementers Packet Content:

Contains all the message specific.XSD files required to implement

Example:

- AS2Envelope
- Command.xsd
- DocumentCommand.xsd
- Proxy.xsd
- ComponentLibrary.xsd

Both the Business Message Standard and the Implementers Packet are available during the ITRG Review Period in the working documents section of the ITRG eRoom:

http://eroom.uncouncil.org/eRoom/facility/InformationTechnicalAssessmentGroupITAG/0_14f7

All documents for review will be in this folder listed by name of the Change Request and Change Request Number. The Business Message Standard is not open for review, but offered as the basis for determining the suitability of the technical solutions.

This eRoom may be accessed by using the following User Name and Password:

User Name: guest

Password: guest