

EAN.UCC XML
Business Message
Standard For

Small Package
Pickup Manifest

Version 1.3

July 2003



TABLE OF CONTENTS

PURPOSE	4
BACKGROUND	5
BUSINESS REQUIREMENTS DOCUMENT FOR SMALL PACKAGE MANIFEST	6
FORWARD.....	9
1.0 BUSINESS OPPORTUNITY	9
1.1 Introduction	9
1.2 Problem Statement.....	9
1.3 References	9
1.4 Acknowledgements	10
2.0 PROCESS VIEW – TRANSPORT	11
2.1 Use Case Scenario: <i>Send Pickup Manifest</i>	12
2.2 Activity Diagram: <i>Send Pickup Manifest</i>	13
2.3 Sequence Diagram: <i>Send Pickup Manifest</i>	14
3.0 LOGICAL VIEW	15
4.0 SMALL PACKAGE PICKUP MANIFEST.....	15
4.1 Cash On Delivery Funds Code List.....	15
4.2 Delivery Confirmation Code List.....	16
4.3 Document Code List	16
4.4 Package Code List.....	16
4.5 Pickup Manifest.....	16
4.6 Pickup Manifest Detail.....	17
4.7 Pickup Manifest Shipment Level.....	17
4.8 Residential Code List.....	17
4.9 Return Service Code List.....	17
4.10 Return Type Code List.....	18
4.11 Service Level Code List	18
4.12 Shipment Party Information	18
4.13 Shipper Information.....	18
4.14 Special Charge Code List.....	18
5.0 COMMON CLASSES	19
5.1 Deliver Location Information:.....	19
5.2 Deliver Package Measurements	19
5.3 Deliver Payment Method Code List.....	19
5.4 Deliver Shipment Information	20
5.5 Document:	20
5.6 Entity Identification:.....	20
6.0 GLOBAL DATA DICTIONARY: DATA ATTRIBUTES FOR SMALL PACKAGE PICKUP MANIFEST	21
APPENDICES:	23
Appendix 1: <i>Class Diagram For Pickup Manifest</i>	23
Appendix 2: <i>Class Diagram From Deliver Common</i>	24
Appendix 3: <i>Class Diagram From Document</i>	25
Appendix 4: <i>Class Diagram From Entity Identification</i>	25
Appendix 5: <i>Class Diagram From Party Common</i>	26
Appendix 6: <i>Class Diagram From Party Identification</i>	27
STYLE SHEET.....	28
DESCRIPTION.....	28
HTML EXAMPLE	28
GLOBAL DATA DICTIONARY.....	31

1.0 SMALL PACKAGE PICKUP MANIFESTCLASS DATA DESCRIPTIONS v1.3	31
INSTANCE FILE	40
DESCRIPTION.....	40
INSTANCE FILE EXAMPLE.....	40

Purpose

The purpose of this Business Message Standard is to provide the necessary information to implement this message as part of the EAN.UCC System. The information contained within this document is a direct result of the work conducted by the EAN.UCC's Plan Business Requirements Group.

The content of this document is actually a collection of material from several different sources to create a single source of information that will provide the necessary basics to understand and implement this EAN.UCC Business Message Standard. The core of this document originates from the Business Requirements Document that is created by the Business Requirements Groups to define the business needs that are to be addressed by this Message. The document then provides the technical details needed to implement the message: a report from the Global Data Dictionary, StyleSheet and Instance File.

This Business Message Standard is meant to be used in conjunction with the EAN.UCC XML Schemas that are available on the EAN and UCC websites. The implementer of these standards needs to be aware of the interrelationship amongst the XML Schemas and the importance of using only interoperable versions.

The reader will notice as they progress through this document that there are several different 'levels' of information that is presented. We begin with the business rationale for the message and then move into the technical details of how and what is needed to exchange this message. This design is deliberate to reach the broadest audience and to meet their needs. Based upon the reader's experience and intentions, specific sections of this document may be more valuable than others. This design and content of this document is based upon the direct feedback from our user community and as such, we are constantly revising and refining how and what we present.

Background

EAN.UCC Business Message Standard:	Small Package Pickup Manifest	
Business Requirement Group:	Deliver	
Business Requirement Document:	Small Package Pickup Manifest	
Business Requirements Group Manager:	Philip Jerred	e.Centre
Global Data Dictionary:	EAN.UCC Global Data Dictionary v1.3	
Schemas:	EAN.UCC Schemas v1.3	
Schemas have been tested on Parser(s) and Version(s):	XML Spy Version 4.4, Xerces, XSV	

***Business Requirements Group
(BRG)***

**Business Requirements
Document For**

**SMALL PACKAGE
PICKUP MANIFEST**

Version 1.3

June 30, 2003

DOCUMENT HISTORY

Document Number:	1.3
Document Version:	1.3
Document Issue Date	June 30, 2003

Document Summary

Document Title	<p>EAN•UCC – Business Requirements Document For “Small Package Pickup Manifest”</p>
Owner	<p>Deliver BRG Doug Harness, Co-Chair Philip Jerred- BRG Manager philip.jerred@e-centre.org.uk</p>
Status	ITRG Approved

Document Change History Log

Date of Change	Version	Reason for Change	Summary of Change	CCR #
June 4, 2002	0.1	Initial BRD		01-000066
August 16, 2002	1.0	To set version number at 1.0 indicating the BRD is approved.	Final edit. No change to business requirements. Upgraded classes to current common enhancement: Added new appendices for Deliver Common	
August 20, 2002	1.1	Returned BRD format to previous style to be consistent with existing BRDs.	Style changes only. No content changes were made.	
April 9, 2003	1.2	Harmonisation version 1.3		
June 30, 2003	1.3	Incorporation of ITRG Harmonisation comments	Replaced Entity Identification class diagram	

Approvals

Name	Title	Signature	Date

Table Of Contents

FORWARD.....	9
1.0 BUSINESS OPPORTUNITY	9
1.1 Introduction	9
1.2 Problem Statement.....	9
1.3 References	9
1.4 Acknowledgements	10
2.0 PROCESS VIEW – TRANSPORT	11
2.1 Use Case Scenario: Send Pickup Manifest.....	12
2.2 Activity Diagram: Send Pickup Manifest.....	13
2.3 Sequence Diagram: Send Pickup Manifest.....	14
3.0 LOGICAL VIEW	15
4.0 SMALL PACKAGE PICKUP MANIFEST.....	15
4.1 Cash On Delivery Funds Code List.....	15
4.2 Delivery Confirmation Code List.....	16
4.3 Document Code List	16
4.4 Package Code List.....	16
4.5 Pickup Manifest.....	16
4.6 Pickup Manifest Detail.....	17
4.7 Pickup Manifest Shipment Level.....	17
4.8 Residential Code List.....	17
4.9 Return Service Code List.....	17
4.10 Return Type Code List.....	18
4.11 Service Level Code List	18
4.12 Shipment Party Information	18
4.13 Shipper Information.....	18
4.14 Special Charge Code List.....	18
5.0 COMMON CLASSES.....	19
5.1 Deliver Location Information:.....	19
5.2 Deliver Package Measurements	19
5.3 Deliver Payment Method Code List.....	19
5.4 Deliver Shipment Information	20
5.5 Document:	20
5.6 Entity Identification:.....	20
6.0 GLOBAL DATA DICTIONARY: DATA ATTRIBUTES FOR SMALL PACKAGE PICKUP MANIFEST	21
APPENDICES:	23
Appendix 1: Class Diagram For Pickup Manifest.....	23
Appendix 2: Class Diagram From Deliver Common	24
Appendix 3: Class Diagram From Document	25
Appendix 4: Class Diagram From Entity Identification.....	25
Appendix 5: Class Diagram From Party Common	26
Appendix 6: Class Diagram From Party Identification	27

Forward

The EAN.UCC System uses a process-to-data approach to the creation and maintenance of global standards.

The work of the Business Requirements Group (BRG) is to establish clear and unambiguous business requirements based upon validated business processes. The Business Requirements Document (BRD) is the vehicle by which business requirements are documented.

The BRD, when approved by the BRG, will be incorporated directly into subsequent standards documentation prepared by either the Information Technical Requirements Group (ITRG) or the Physical Technical Requirements Group (PTRG).

The Unified Modeling Language (UML) has been chosen for modeling business processes because of its current popularity and global acceptance. UML business process models form the basis from which business processes, supporting data and global standards are linked.

1.0 Business Opportunity

1.1 Introduction

The Small Package Pickup Manifest BRD is the result of the talents of the EAN.UCC Deliver Business Requirements Group.

1.2 Problem Statement

A message is needed that can provide manifest information of all packages tendered to the carrier from the Shipper, Consignee or Third Party.

1.3 References

- Change Request Transportation AS-IS Model, Draft 1.2, July 13, 2001
- X-12 (215) Transaction Set
- Change Request #01-000066

1.4 Acknowledgements

Doug Harness
Regina A. De Baker
Becky Dettling
Sue Donarski
K. Wayne Gingerich
Stephanie Hodge-
Daniels
Kent Jamison
Kari Melhus
Jeff Miller
Debra Noyes
Mike Osiecki
Jamie Rodriguez
John Ryu

Fleming Companies, Inc. Co-Chair
Watkins Associated Industries
3M Company
Schneider Logistics
Werner Enterprises
Levi Strauss & Co.

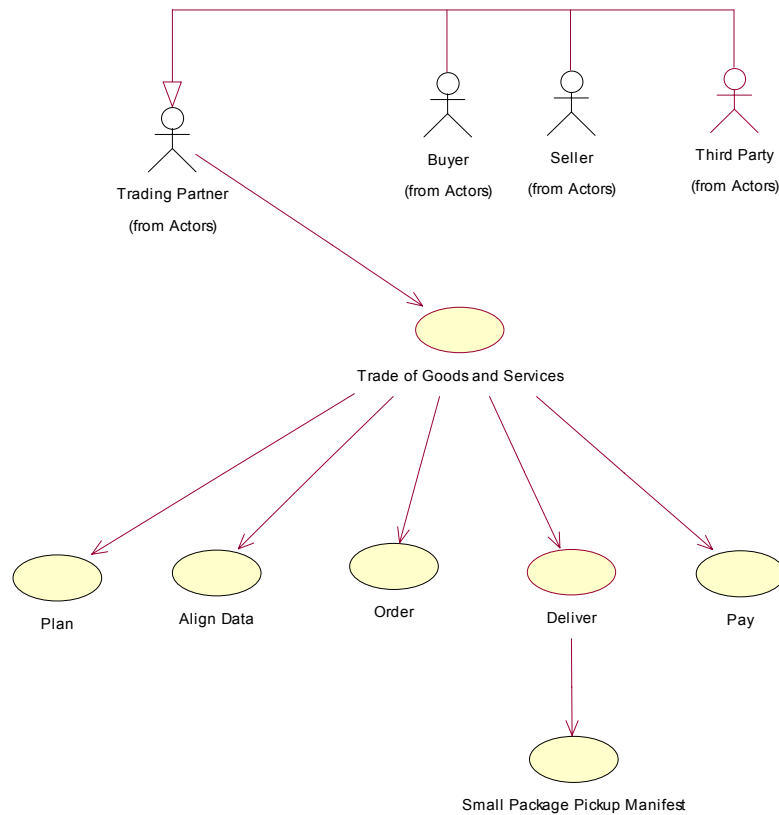
Consolidated Freightways
Target Corporation
Kraft Foods, Inc.
Johnsonville Sausage, L.L.C.
Best Buy Company, Inc.
UCC – BRG Manager
UCC – Business Process Modeler

2.0 Process View – Transport

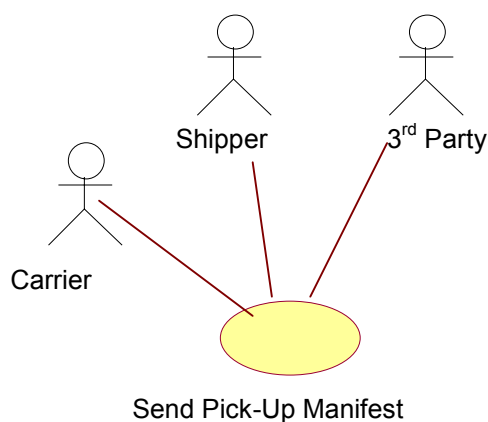
Small Package Pickup Manifest is a transportation process used by the Shipper to communicate package level detail about a shipment ready for pickup by small package carrier.

Small Package Pickup Manifest is a North American Motor Carrier specific process.

The diagram below illustrates the position of the small package pickup manifest within the overall EAN.UCC General Business Model.



2.1 Use Case Scenario: Send Pickup Manifest



2.1.1 Business Opportunity/Problem Statement

A standard pickup manifest for small packages, would provide the North American Motor Freight industry an electronic means of communicating pickup manifest information to the carrier from the shipper (also called consignor), or 3rd party.

2.1.2 Stakeholders: Actors

There are two actors in this process: the Carrier and Shipper with another possible actor called 3rd Party.

2.1.3 Process Start State

Packages are ready and/or scheduled to be picked up.

2.1.4 Process End State

Carrier receives manifest message.

2.1.5 Preconditions

Business Relationship and Process Alignment established.

2.1.6 Successful End Condition

Carrier receives manifest message.

2.1.7 Failed End Condition

Shipper cannot transmit manifest message.

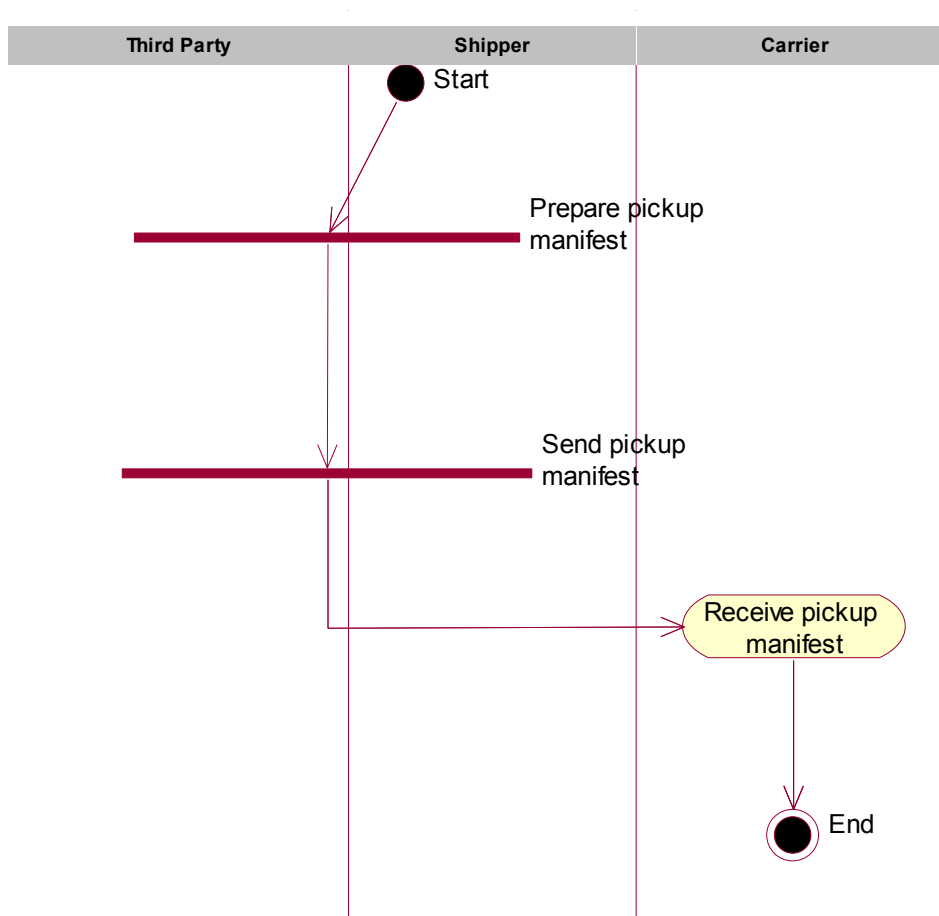
2.1.8 Main Process Flow

1. Shipper or 3rd Party prepares manifest message.
2. Shipper or 3rd Party sends manifest message.
3. Carrier receives manifest message.

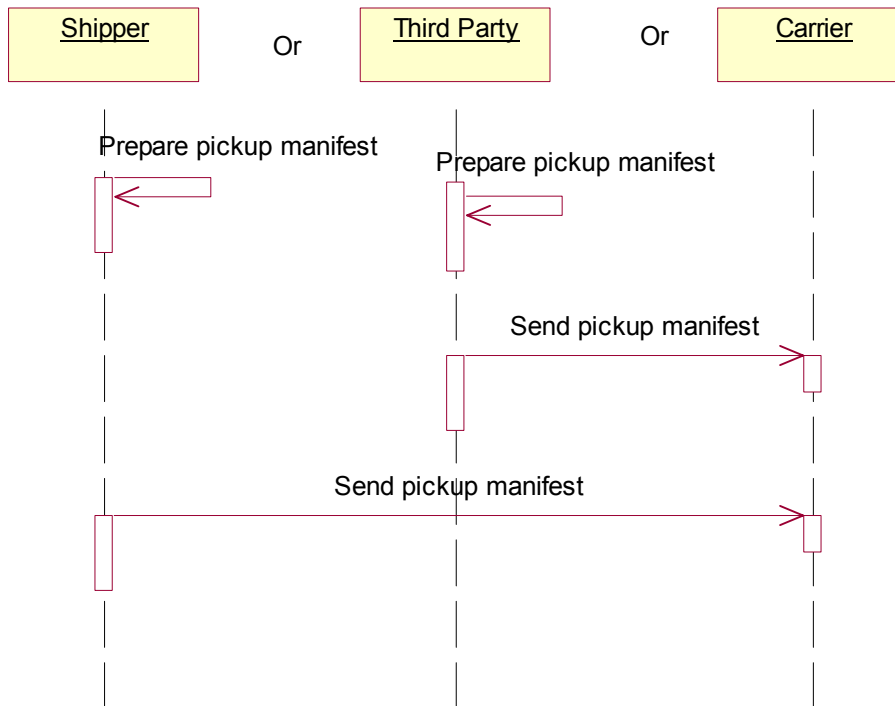
2.1.9 Alternate Process Flow

None

2.2 Activity Diagram: Send Pickup Manifest



2.3 Sequence Diagram: Send Pickup Manifest



3.0 Logical View

The class diagram for Small Package Pickup Manifest included in the appendixes uses the following color coding

- Red indicates that the class is the root class for the diagram.
- Grey indicates that the class is outside of or external to the root class.
- Yellow indicates that the class pertains specifically to the root class.
- Green indicates notes

4.0 Small Package Pickup Manifest

The Small Package Pickup Manifest classes are pictured and the classes are listed alphabetically. These include:

- Cash On Delivery Funds Code List
- Delivery Confirmation Code List
- Document Code List
- Package Code List
- Pickup Manifest
- Pickup Manifest Detail
- Pickup Manifest Shipment Level
- Residential Code List
- Return Service Code List
- Return Type Code List
- Service Level Code List
- Shipment Party Information
- Shipper Information
- Special Charge Code List

4.1 Cash On Delivery Funds Code List

1. A pickup manifest detail may have a cash on delivery code.
2. This is an enumerated class and is optional.
3. One of the three defined attributes must be selected.
 - ALL_SUPPORTED_FUNDS
 - CASHIERS_CHECK_MONEY_ORDER_ONLY
 - CHECK_CASHIERS_CHECK_MONEY_ORDER_ONLY

4.2 Delivery Confirmation Code List

1. A pickup manifest detail may have a delivery confirmation code.
2. This class is an enumerated class and is optional.
3. One of the three defined attributes must be selected.
 - ADULT_SIGNATURE_REQUIRED
 - NAME_AND_DATE
 - SIGNATURE_AND_DATE

4.3 Document Code List

1. A pickup manifest detail has a document code.
2. This class is an enumerated class and is mandatory.
3. One of the three defined attributes must be selected.
 - DOCUMENT
 - LETTER
 - NON_DOCUMENT

4.4 Package Code List

1. A pickup manifest detail has a package code.
2. This class is an enumerated class and is mandatory.
3. One of the nine defined attributes must be selected.
 - BOX
 - CUSTOMER_SUPPLIED
 - JUMBO
 - MIXED_UNKNOWN
 - NAME
 - PACKED_NOT_OTHERWISE_SPECIFIED
 - SPECIAL_JUMBO
 - TUBE
 - UNIT_LETTER

4.5 Pickup Manifest

1. 'Pickup Manifest' class is the root of the Small Package Pickup Manifest class diagram.
2. This 'Pickup Manifest' class inherits attributes from the 'Document' class.
3. 'Pickup Manifest' class has three mandatory associations.
 - a. First mandatory association exists to 'Entity Identification' class with a role name of pickup manifest identification.
 - b. Second mandatory association exists to 'Shipper Information' class with a role name of shipper.
 - c. The third mandatory association with possible multiple occurrences exists to 'Pickup Manifest Shipment Level' with a role name of detail.
4. The 'Pickup Manifest' class contains one attribute.
 - Actual Pick Up Date

4.6 Pickup Manifest Detail

1. 'Pickup Manifest Detail' class is mandatory with possible multiple occurrences.
2. 'Pickup Manifest Detail' class has four mandatory associations to other classes.
 - a. Deliver Package Measurements with role name package measurement
 - b. Document Code List with role name document
 - c. Package Code List with role name package
 - d. Residential Code List with role name residential
3. 'Pickup Manifest Detail' class has five optional associations to other classes.
 - a. Cash On Delivery Funds Code List with role name cash on delivery funds
 - b. Delivery Confirmation Code List with role name delivery confirmation
 - c. Special Charge Code List with role name special charge
 - d. Return Service Code List with role name return service
 - e. Return Type Code List with role name return type code.
4. The 'Pickup Manifest Detail' class contains one attribute.
 - Reference Number

4.7 Pickup Manifest Shipment Level

1. This class is mandatory with possible multiple occurrences.
2. This class has three mandatory associations to other classes.
 - a. Deliver Shipment Information with role name shipment information
 - b. Delivery Payment Method Code List with role name method of payment
 - c. Service Level Code List with role name service level.
3. This class has a choice relationship to the Shipment Party Information class with the following role choices and one the three role must be selected.
 - a. Consignee
 - b. Return service
 - c. Third party
4. The class contains one attribute.
 - Reference Number

4.8 Residential Code List

1. This is an enumerated class and is mandatory.
2. One of the two defined attributes must be selected.
 - BUSINESS_DELIVERY
 - RESIDENTIAL_DELIVERY

4.9 Return Service Code List

1. This is an enumerated class and is optional.
2. One of the five defined attributes must be selected.
 - CALL_TAG
 - ONE_ATTEMPT
 - ONLINE_CALL_TAG
 - PRINT_AND_MAIL
 - PRINT_RETURN_LABEL

4.10 Return Type Code List

1. This is an enumerated class and is optional.
2. One of the two defined attributes must be selected.
 - REGULAR_COD
 - TAGLESS_COD

4.11 Service Level Code List

1. This is an enumerated class and is mandatory.
2. One of the three defined attributes must be selected.
 - MULTIWEIGHT
 - MUTUALLY_DEFINED
 - STANDARD_GROUND_HUNDRED_WEIGHT

4.12 Shipment Party Information

1. This class is mandatory, and one of the three defined roles must be selected.
 - Consignee
 - Return service
 - Third party
2. There is a mandatory association to 'Deliver Location Information' class.
3. The class contains two attributes
 - Account Number
 - Attention

4.13 Shipper Information

1. This class is mandatory with a role name of shipper.
2. The class contains four attributes.
 - Account Number
 - Country ISO Code
 - Currency ISO Code
 - Name

4.14 Special Charge Code List

1. This is an enumerated class and is optional.
2. One of the six defined attributes must be selected.
 - HAZARDOUS_CARGO_CHARGE
 - HOLDING_CHARGE
 - OVERSIZED_PREMIUM_EXTRA_LENGTH
 - SATURDAY_DELIVERY
 - SATURDAY_PICKUP
 - SPECIAL_HANDLING_SERVICE

5.0 Common Classes

The small package pickup manifest reused classes are pictured and the classes are listed alphabetically. These include:

- Deliver Location Information
- Deliver Package Measurements
- Deliver Payment Method Code List
- Deliver Shipment Information
- Document
- Entity Identification

5.1 Deliver Location Information:

1. This class originates from Deliver Common
2. This class is mandatory with a role name party information.
3. There is a mandatory association to 'Name And Address' class.
4. There is an optional association to 'Party Identification' class.
5. There is an optional multiple occurrence association to Contact class.
6. This class contains no attributes.

5.2 Deliver Package Measurements

1. This class originates from Deliver Common
2. This class is mandatory with a role name of package measurement.
3. There are four attributes that gives the ability to define the unit of measure for each attribute
 - Package Height
 - Package Length
 - Package Weight
 - Package Width

5.3 Deliver Payment Method Code List

1. This class originates from Deliver Common
2. This class is an enumerated class and is mandatory with a role name of method of payment.
3. One of the four defined attributes must be selected.
 - COLLECT
 - PAID_BY_BUYER
 - PREPAID_BY_SELLER
 - THIRD_PARTY_PAY

5.4 Deliver Shipment Information

1. This class originates from Deliver Common.
2. This class is mandatory with a role name of shipment information and provides the following two attributes
 - Number of Units
 - Shipment Weight

5.5 Document:

1. This class originates from Document.
2. It contains four attributes.
 1. Content Version: This is a version number for the content of the document.
 2. Creation Date: This is the date the message was created. The format is 'YYYYMMDDTHHMMSS'
 3. Document Structure Version: This is a version number for the structure of the document
 4. Last Update Date: This is the last update date for the specific document. The format is 'YYYYMMDD'

5.6 Entity Identification:

1. This class originates from Entity Identification.
2. This is a mandatory class with a role name of pickup Manifest identification.
3. It contains one attribute.
 - Unique Creator Identification

6.0 Global Data Dictionary: Data Attributes for Small Package Pickup Manifest

CashOnDeliveryFundsCodeList

ALL_SUPPORTED_FUNDS: TBD
CASHIERS_CHECK_MONEY_ORDER_ONLY: TBD
CHECK_CASHIERS_CHECK_MONEY_ORDER_ONLY: TBD

DeliveryConfirmationCodeList

ADULT_SIGNATURE_REQUIRED
NAME_AND_DATE
SIGNATURE_AND_DATE

DocumentCodeList

DOCUMENT: TBD
LETTER: TBD
NON_DOCUMENT: TBD

PackageCodeList

BOX: TBD
CUSTOMER_SUPPLIED: TBD
JUMBO: TBD
MIXED_UNKNOWN: TBD
NAME: TBD
PACKED_NOT_OTHERWISE_SPECIFIED: TBD
SPECIAL_JUMBO: TBD
TUBE: TBD
UNIT_LETTER: TBD

PickupManifest

actualPickUpDate: TBD

PickupManifestDetail

referenceNumber: TBD

PickupManifestShipmentLevel

referenceNumber: TBD

ResidentialCodeList

BUSINESS_DELIVERY: TBD
RESIDENTIAL_DELIVERY: TBD

ReturnServiceCodeList

CALL_TAG: TBD
ONE_ATTEMPT: TBD
ONLINE_CALL_TAG: TBD
PRINT_AND_MAIL: TBD
PRINT_RETURN_LABEL: TBD

ReturnTypeCodeList

REGULAR_COD: TBD
TAGLESS_COD: TBD

ServiceLevelCodeList

MULTIWEIGHT
MUTUALLY_DEFINED
STANDARD_GROUND_HUNDRED_WEIGHT

ShipmentPartyInformation

accountNumber: The shipping party's account number
attention: The designation of the shipment to the attention of a specific party.

ShipperInformation

accountNumber: The shipper's account number
countryISOCode: A global standard for country identification.
currencyISOCode: A global standard for currency identification.
name: The shipper's name.

SpecialChargeCodeList

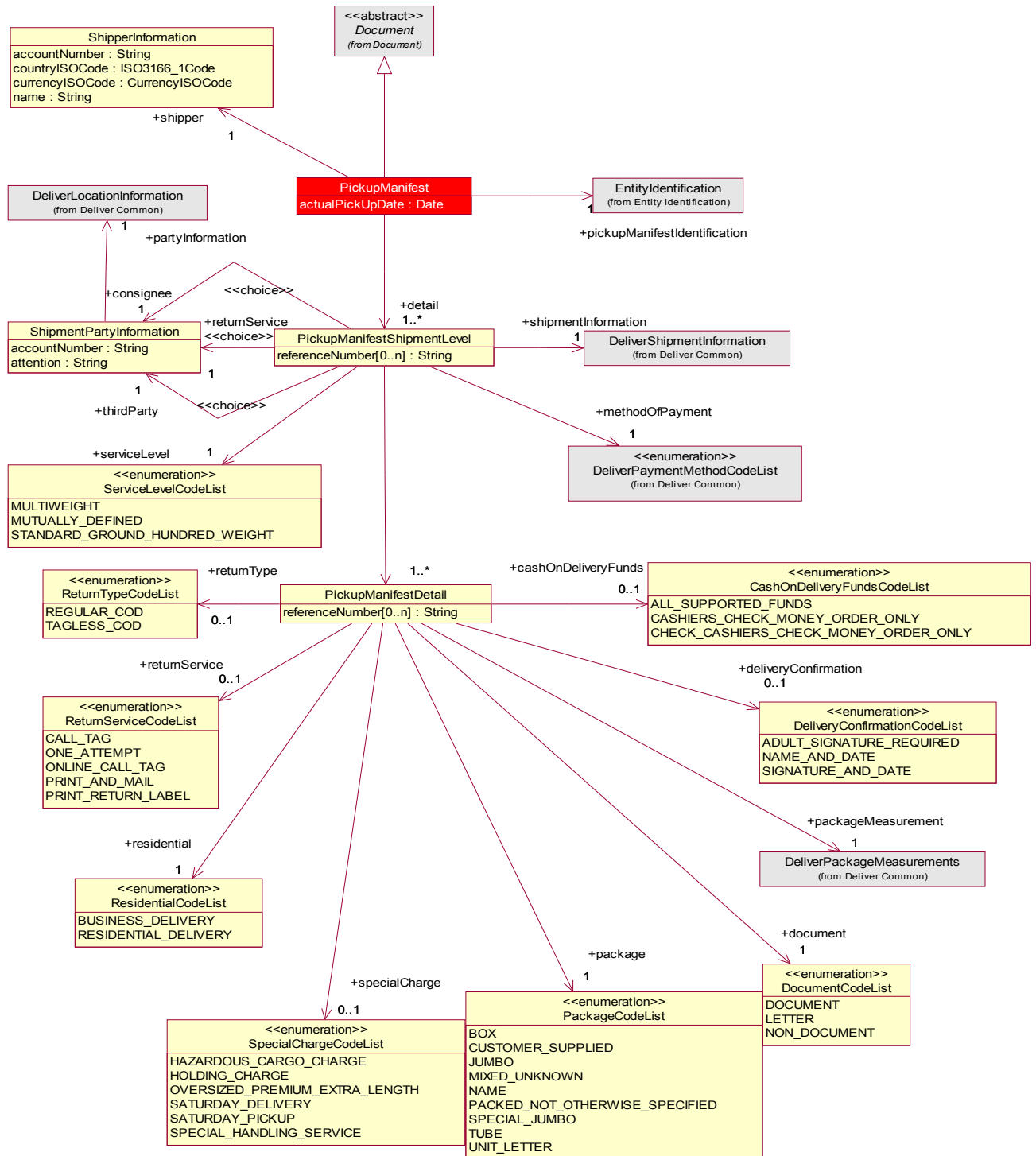
HAZARDOUS_CARGO_CHARGE: TBD
HOLDING_CHARGE: TBD
OVERSIZED_PREMIUM_EXTRA_LENGTH: TBD
SATURDAY_DELIVERY: TBD
SATURDAY_PICKUP: TBD
SPECIAL_HANDLING_SERVICE: TBD

Note: See Common Global Data Dictionary for all common classes/attributes.

Appendices:

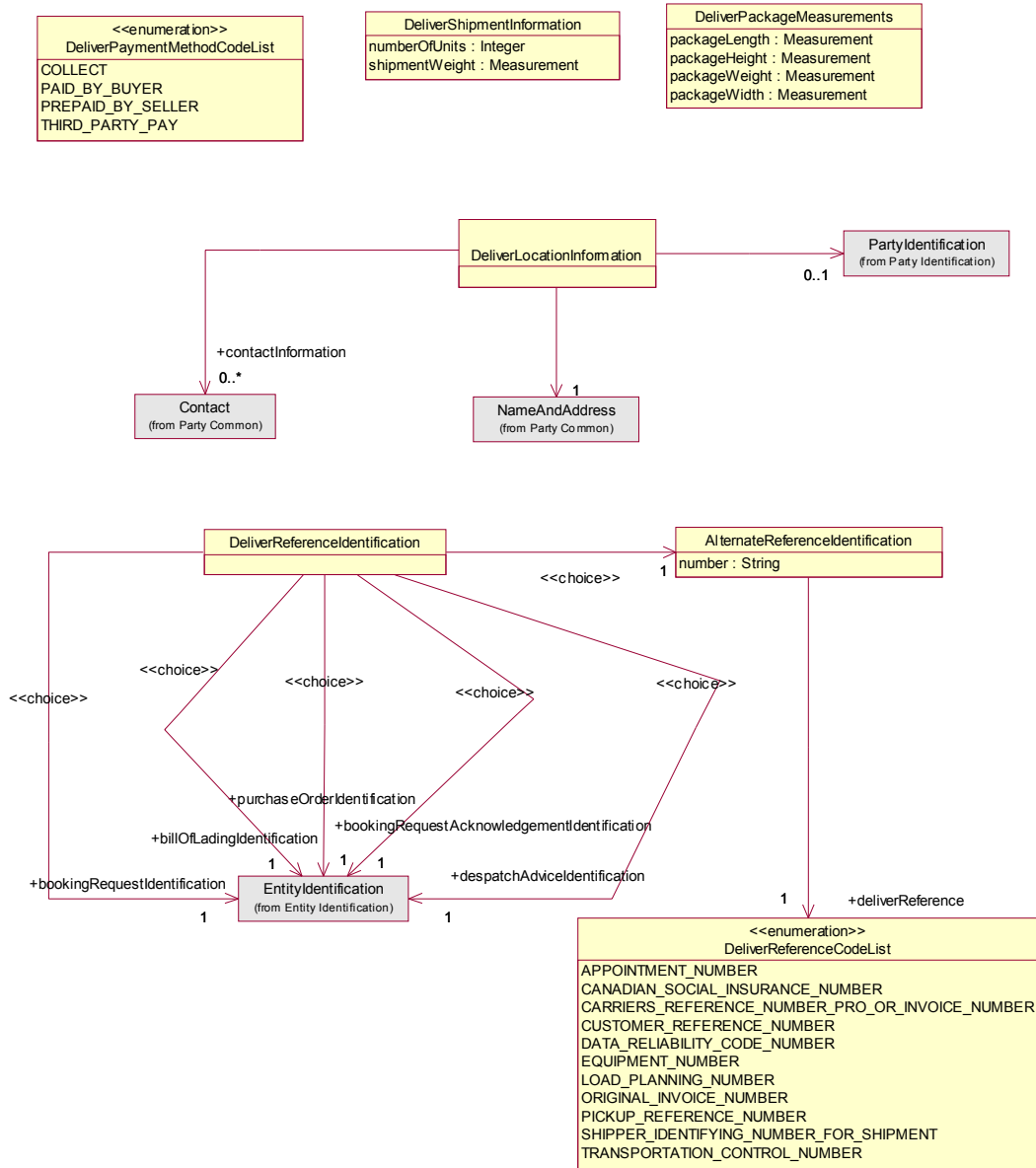
Appendix 1: Class Diagram For Pickup Manifest

Business Process: DELIVER: Pickup Manifest



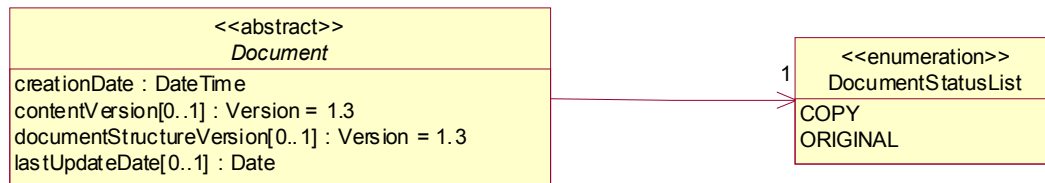
Appendix 2: Class Diagram From Deliver Common

Business Process: DELIVER: Deliver Common



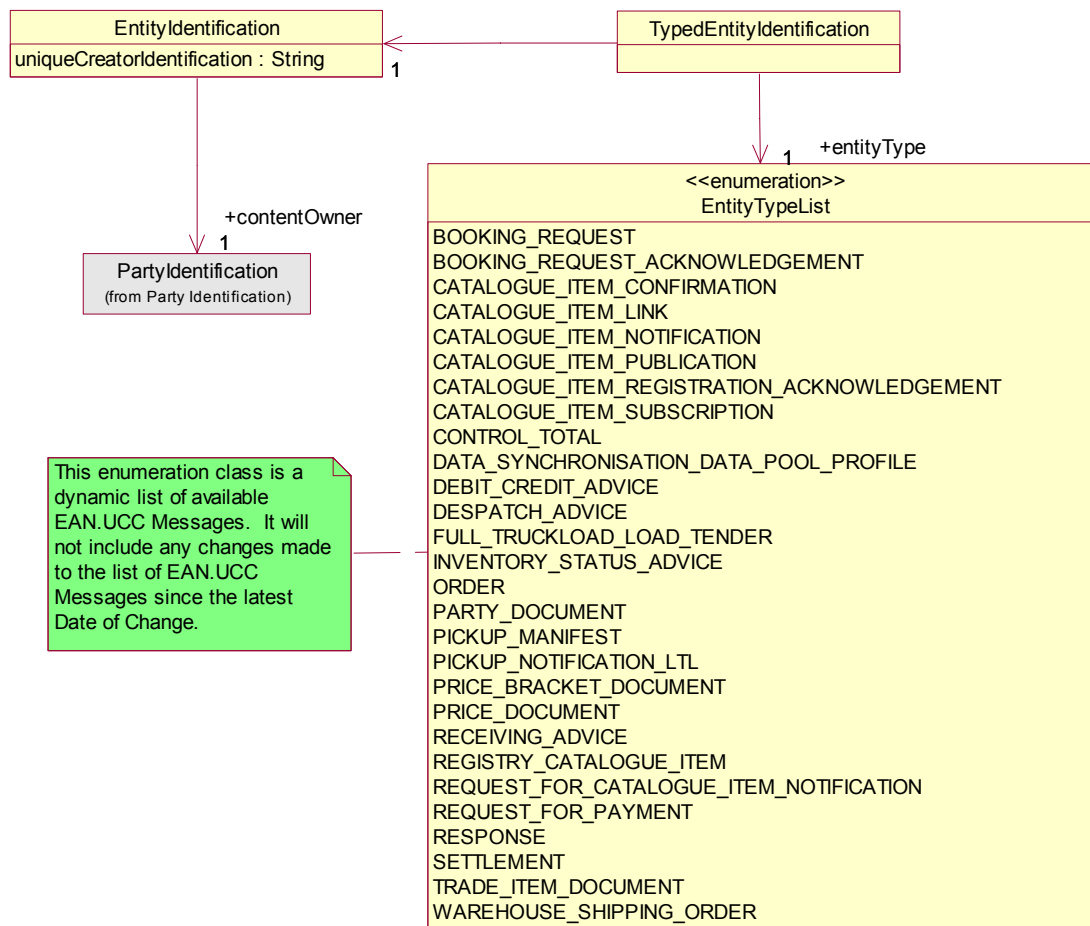
Appendix 3: Class Diagram From Document

Common Library :Common: Components: Document



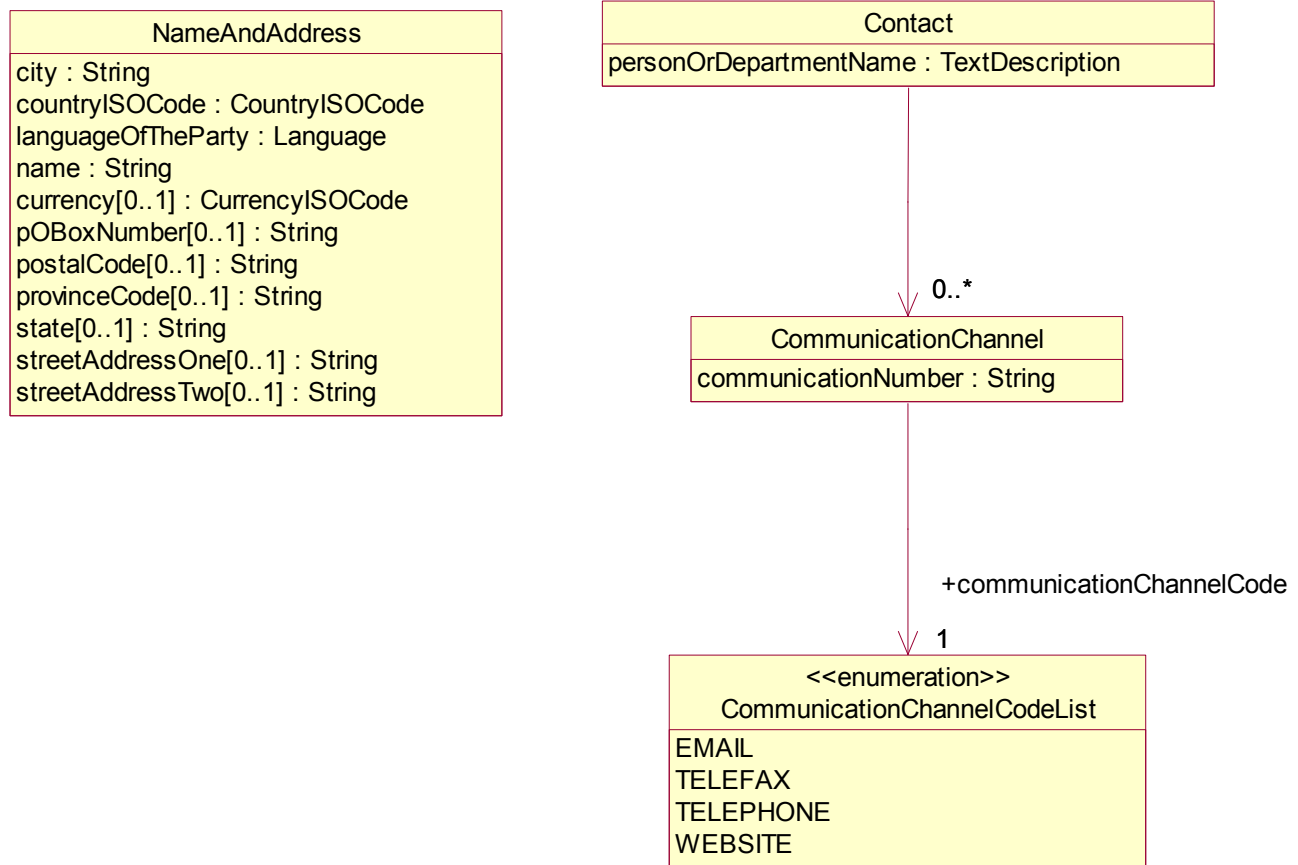
Appendix 4: Class Diagram From Entity Identification

Common Library: Common: Identification: Entity Identification



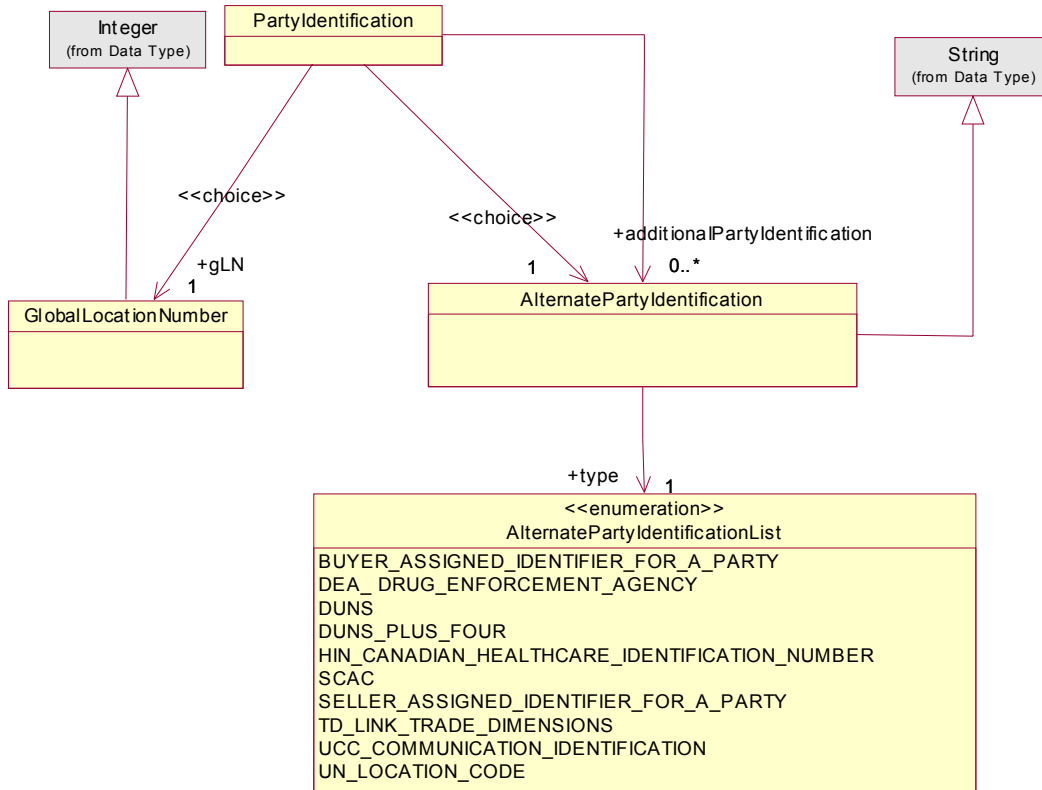
Appendix 5: Class Diagram From Party Common

Business Process: ALIGN: Party: Party Common



Appendix 6: Class Diagram From Party Identification

Common Library: Common: Identification: Party Identification



Style Sheet

Description

This HTML has been created using a Style Sheet that is a visual representation of the data. It is not an actual Style Sheet, but an example of what a Style Sheet may look like.

HTML Example

Message MSG-123

Creation Date	August 02, 2001 12:00:00	Representing Party	0012345000065
Msg From Party	0614141000012	Msg To Party	0012345000065

Transaction

Creator ID = OJGROWER-TRANS-12345

Content Owner = 0614141000012

Command ADD

Creator ID = OJGROWER-ITEM-12345

Content Owner = 0614141000012

Document Information

Creation Date	January 10, 2004 12:00:01	Last Update Date	October 01, 2004
Content Version	1.3	Doc Structure Version	1.3
Status	ORIGINAL		

Pickup Manifest Information

Actual Pickup Date August 13, 2004

Shipper

Name Walker Enterprises
Country Code US

Account Number WE-125337Z
Currency Code USD

Shipment Detail 1

Return Service

Account Number AN-2345
Name Walker Enterprises
Language en
Currency

Attention Shipping Department
Address 78 3rd St.
 New Orleans, Louisiana 11735 US

Shipment Information

Shipment Weight 10.2 LBS, 12.5 LBS
Method of Payment PAID_BY_BUYER
Reference Number(s) ABC123, DEF456, RN-12396, RN-456Z

Number Of Units 2
Service Level MULTIWEIGHT

Pickup Manifest Details

	Ref Number(s)	Measurements	Package	Document	Properties
1	ABC123, DEF456	Length: 10.2 IN Height: 10.2 IN Width: 10.2 IN Weight: 10.2 LBS	BOX	LETTER	Delivery Confirmation: ADULT_SIGNATURE_REQUIRED Residential: BUSINESS_DELIVERY Return Service: CALL_TAG Return Type: REGULAR_COD COD Funds: ALL_SUPPORTED_FUNDS Special Charge: OVERSIZED_PREMIUM_EXTRA_LENGTH
2	ABC123, DEF456	Length: 17.5 IN Height: 25 IN Width: 2 IN Weight: 10.2 LBS	MIXED_UNKNOWN	LETTER	Delivery Confirmation: SIGNATURE_AND_DATE Residential: RESIDENTIAL_DELIVERY Return Service: PRINT_AND_MAIL Return Type: TAGLESS_COD COD Funds: CASHIERS_CHECK_MONEY_ORDER_ONLY Special Charge: SATURDAY_DELIVERY

3	RN-123Z, RN-456	Length: 25 IN Height: 18.2 IN Width: 8 IN Weight: 12 LBS	CUSTOMER_SUPPLIED	DOCUMENT	Delivery Confirmation: NAME_AND_DATE Residential: BUSINESS_DELIVERY Return Service: CALL_TAG Return Type: REGULAR_COD COD Funds: ALL_SUPPORTED_FUNDS Special Charge: OVERSIZED_PREMIUM_EXTRA_LENGTH
---	--------------------	---	-------------------	----------	---

4	RN-1568, RN-93147- Z	Length: 18.5 IN Height: 22 IN Width: 11.2 IN Weight: 100 LBS	TUBE	DOCUMENT	Delivery Confirmation: SIGNATURE_AND_DATE Residential: BUSINESS_DELIVERY Return Service: CALL_TAG Return Type: REGULAR_COD COD Funds: ALL_SUPPORTED_FUNDS Special Charge: OVERSIZED_PREMIUM_EXTRA_LENGTH
---	----------------------------	--	------	----------	---

GLOBAL DATA DICTIONARY

1.0 Small Package Pickup ManifestClass Data Descriptions v1.3

Class Name	Role Name	Enumerated Value for List Class	Attribute Name	Description	Min/Max Size	M/O	EAN.UCC XSD
AlternatePartyIdentification	additionalPartyIdentification			Only one primary party identifier is used for each party. If an alternate identifier, other than GLN is used, there is no guarantee of data integrity across the process. It is the responsibility of the company electing the choice to ensure data integrity.		O	Identification
AlternatePartyIdentificationList	type			Only one primary party identifier is used for each party. If an alternate identifier, other than GLN is used, there is no guarantee of data integrity across the process. It is the responsibility of the company electing the choice to ensure data integrity.		M	Identification
		BUYER_ASSIGNED_IDENTIFIER_FOR_A_PARTY		This optional code will be used for cross-reference on a one-to-one relationship.			
		DEA_DRUG_ENFORCEMENT_AGENCY		This optional code will be used for cross-reference on a one-to-one relationship.			
		DUNS		This optional code will be used for cross-reference on a one-to-one relationship.			
		DUNS_PLUS_FOUR		This optional code will be used for cross-reference on a one-to-one relationship.			
		HIN_CANADIAN_HEALTHCARE_IDENTIFICATION_NUMBER		This optional code will be used for cross-reference on a one-to-one relationship.			

		SCAC		This optional code will be used for cross-reference on a one-to-one relationship.			
		SELLER_ASSIGN D_IDENTIFIER_FO R_A_PARTY		This optional code will be used for cross-reference on a one-to-one relationship.			
		TD_LINK_TRADE_D IMENSIONS		This optional code will be used for cross-reference on a one-to-one relationship.			
		UCC_COMMUNICA TION_IDENTIFICATI ON		This optional code will be used for cross-reference on a one-to-one relationship.			
		UN_LOCATION_CO DE		This optional code will be used for cross-reference on a one-to-one relationship.			
CashOnDeliveryFundsCodeList	cashOnDeliveryFunds			A pickup manifest detail may have a cash on delivery code. This is an enumerated class and is optional.		O	PickupManifest
		ALL_SUPPORTED_FUNDS		All Supported Funds	1/5		
		CASHIERS_CHECK_MONEY_ORDER_ONLY		Cashiers Check Money Order Only	1/5		
		CHECK_CASHIERS_CHECK_MONEY_ORDER_ONLY		Check Cashiers Check Money Order Only	1/5		
CommunicationChannel				Each contact can have zero or more communication channels. The channel types are expressed as a telephone number, an email address, a telefax number, or web address.		O	DeliverComponentLibrary
			communicationNumber	String		M	

Communication ChannelCodeList	communicationCh annelCode			Each contact can have zero or more communication channels. The channel types are expressed as a telephone number, an email address, a telefax number, or web address.		M	DeliverCompone ntLibrary
		EMAIL		Email			
		TELEFAX		Telefax			
		TELEPHONE		Telephone			
		WEBSITE		Website			
Contact	contactInformation			These attributes detail the contact name or department name within the party. To simplify the overall trade process, each party has the option to identify one or more points of contact.		O	Identification
			personOrDepartment	String		M	
DeliveryConfirmation CodeList	deliveryConfirmati on			A pickup manifest detail may have a delivery confirmation code. This class is an enumerated class and is optional.		O	PickupManifest
		ADULT_SIGNATUR E_REQUIRED		Adult Signature Required	1/25		
		NAME_AND_DATE		Name And Date	1/25		
		SIGNATURE_AND_ DATE		Signature And Date	1/25		
DeliverLocationInfor mation				This class originates from Deliver Common This class is mandatory with a role name party information.		M	DeliverCompone ntLibrary
	partyInformation					M	

DeliverPackageMeasurements	packageMeasurement			This external class originates from Deliver Common and is used to identify the measurements of packages in weight, width, length and height. Each of these package dimension measurements is required. This is a mandatory class.	1/15	M	DeliverComponentLibrary
			packageHeight		1/15	M	
			packageLength		1/15	M	
			packageWeight		1/15	M	
			packageWidth		1/15	M	
DeliverPaymentMethodCodeList	methodOfPayment			This class originates from Deliver Common This class is an enumerated class and is mandatory with a role name of method of payment.		M	DeliverComponentLibrary
		COLLECT		Collect			
		PAID_BY_BUYER		Paid By Buyer			
		PREPAID_BY_SELLER		Prepaid By Seller			
		THIRD_PARTY_PAY		Third Party Pay			
DeliverShipmentInformation	shipmentInformation			This class originates from Deliver Common. This class is mandatory with a role name of shipment information.	1/15	M	DeliverComponentLibrary
			numberOfUnits	TBD	1/15	M	
			shipmentWeight	TBD	1/15	M	
Document				This class is used to specify the basic information about the context of the message.		M	Components
			creationDate	DateTime		M	
			contentVersion	Version = 1.3		O	
			documentStructureVersion	Version =1.3		O	
			lastUpdateDate	Date		O	

DocumentCodeList	document			A pickup manifest detail has a document code. This class is an enumerated class and is mandatory.		M	PickupManifest
		DOCUMENT		Document			
		LETTER		Letter			
		NON_DOCUMENT		Non Document			
DocumentStatusList	documentStatus			Indicates if the document is a copy or an original.		M	Components
		COPY		A copy of the original document			
		ORIGINAL		The original document			
EntityIdentification	pickupManifestIdentification			This class originates from Entity Identification. This is a mandatory class with a role name of pickup Manifest identification.	1/30	M	Identification
			uniqueCreatorIdentification			M	
GlobalLocationNumber	gLN			The Global Location Number (GLN) is a structured Identification of a physical location, legal or functional entity within an enterprise. The GLN is the recommended primary party identifier. Each party identified in the trading relationship must have a prim		O	Identification
NameAndAddress				Each party will identify their party name and address. The Party information will include city, name, country code ISO 3166, and the language of the party ISO 639-1988.		M	Components
			city	City		M	
			countryISOCode	ISO Country Code		M	
			languageOfTheParty	Language of the Party		M	
			name	Name		M	
			currency	Currency		O	

			pOBoxNumber	PO Box Number		O	
			postalCode	Postal Code		O	
			provinceCode	Province Code		O	
			state	State		O	
			streetAddressOne	Street Address One		O	
			streetAddressTwo	Street Address Two		O	
PackageCodeList	package			A pickup manifest detail has a package code. This class is an enumerated class and is mandatory.		M	PickupManifest
		BOX		Box	1/15		
		CUSTOMER_SUPPLIED		Customer Supplied	1/15		
		JUMBO		Jumbo	1/15		
		MIXED_UNKNOWN		Mixed Unknown	1/15		
		NAME		Name	1/15		
		PACKED_NOT_OTHERWISE_SPECIFIED		Packed not Otherwise Specified	1/15		
		SPECIAL_JUMBO		Special Jumbo	1/15		
		TUBE		Tube	1/15		
		UNIT_LETTER		Unit Letter	1/15		
PartyIdentification				There is a choice of selecting either a GLN (Recommended) or Alternate Party Identification as your primary party identification. Additionally, optional party identification, which cannot be GLN may be included. For example you may select one GLN as your		O	Identification
PickupManifest			actualPickupDate	This is the root class for the Pickup Manifest Message.		M	PickupManifest
PickupManifestDetail	detail					M	PickupManifest

PickupManifestShipmentLevel	detail		referenceNumber	This class is mandatory with possible multiple occurrences. This class has three mandatory associations to other classes. Deliver Shipment Information with role name shipment information Delivery Payment Method Code List with role name method of payment Service Level Code List with role name service level. This class has a choice relationship to the Shipment Party Information class with the following role choices and one the three role must be selected. Consignee Return service Third party The class contains one attribute. Reference Number	1/20	O	PickupManifest
ResidentialCodeList	residential		referenceNumber	This is an enumerated class and is mandatory.	1/20	O	PickupManifest
		BUSINESS_DELIVERY		Business Delivery			
		RESIDENTIAL_DELIVERY		Residential Delivery			
ReturnServiceCodeList	returnService			Online Call Tag		O	PickupManifest
		CALL_TAG		CallTag			
		ONE_ATTEMPT		One Attempt			
		ONLINE_CALL_TAG		Online Call Tag			
		PRINT_AND_MAIL		Print and Mail			
		PRINT_RETURN_LABEL		Print Return Label			

ReturnTypeCodeList	returnType			This is an enumerated class and is optional.		O	PickupManifest
		REGULAR_COD		Regular COD			
		TAGLESS_COD		Tagless COD			
ServiceLevelCodeList	serviceLevel			This is an enumerated class and is mandatory.		M	PickupManifest
		MULTIWEIGHT		Multiweight			
		MUTUALLY_DEFINED		Mutually Defined			
		STANDARD_GROUND_HUNDRED_WEIGHT		Standard Ground Hundred Weight			
ShipmentPartyInformation	consignee			This class is mandatory, and one of the three defined roles must be selected. Consignee Return service Third party There is a mandatory association to 'Deliver Location Information' class. The class contains two attributes Account Number Attention		M	PickupManifest
	returnService			Return Service			
	thirdParty			Third Party			
			accountNumber			M	
			attention			M	
ShipperInformation	shipper		accountNumber	This class is mandatory with a role name of shipper.		M	PickupManifest
			countryISOCODE		1/2	M	
			currencyISOCODE		1/3	M	
			name		1/5	M	
			timeReady	The ship from location's TBD time.	1/8	M	

SpecialChargeCode List	specialCharge			This is an enumerated class and is optional.		O	PickupManifest
		HAZARDOUS_CAR GO_CHARGE		Hazardous Cargo Charge			
		HOLDING_CHARGE		Holding Charge			
		OVERSIZED_PREM IUM_EXTRA LENG TH		Oversized Premium Extra Length			
		SATURDAY_DELIV ERY		Saturday Delivery			
		SATURDAY_PICKU P		Saturday Pickup			
		SPECIAL_HANDLIN G_SERVICE		Special Handling Service			

Instance File

Description

The Instance File is an example of what the schema may look like when it includes live data. This can be used as comparison to a completed schema and can serve as a point of reference for development.

Instance File Example

```
<?xml version="1.0" encoding="UTF-8"?>
<?xml-stylesheet type="text/xsl" href="../../4_XSL/Main.xsl"?>
<!-- This is a sample file-->
<eanucc:envelope xmlns:xsi="http://www.w3.org/2001/XMLSchema-instance"
  xmlns:eanucc="http://www.ean-ucc.org/schemas/1.3/eanucc"
  xsi:schemaLocation="http://www.ean-ucc.org/schemas/1.3/eanucc
    ../2_XSD_PROXY/PickupManifestProxy.xsd" communicationVersion="1.3">
  <messageHeader creationDate="2001-08-02T12:00:00">
    <userId>OJGROWER-12345</userId>
    <password>SECRET</password>
    <messageIdentifier>MSG-123</messageIdentifier>
    <to>
      <gln>0012345000065</gln>
    </to>
    <from>
      <gln>0614141000012</gln>
    </from>
    <representingParty>
      <gln>0012345000065</gln>
    </representingParty>
  </messageHeader>
  <body>
    <eanucc:transaction>
      <entityIdentification>
        <uniqueCreatorIdentification>OJGROWER-TRANS-
12345</uniqueCreatorIdentification>
        <contentOwner>
          <gln>0614141000012</gln>
        </contentOwner>
      </entityIdentification>
      <command>
        <eanucc:documentCommand>
          <documentCommandHeader type="ADD">
            <entityIdentification>
              <uniqueCreatorIdentification>OJGROWER-ITEM-
12345</uniqueCreatorIdentification>
              <contentOwner>
                <gln>0614141000012</gln>
              </contentOwner>
            </entityIdentification>
          </documentCommandHeader>
          <documentCommandOperand>
```

```

        <eanucc:pickupManifest creationDate="2004-01-10T12:00:01"
documentStatus="ORIGINAL" contentVersion="1.3" documentStructureVersion="1.3"
lastUpdateDate="2004-10-01">
    <pickupManifestIdentification>

    <uniqueCreatorIdentification>D10876</uniqueCreatorIdentification>
        <contentOwner>
            <gln>0614141000032</gln>
        </contentOwner>
    </pickupManifestIdentification>
    <actualPickupDate>2004-08-13</actualPickupDate>
    <shipper>
        <name>
            Walker Enterprises
        </name>
        <accountNumber>WE-125337Z</accountNumber>
        <countryISOCODE>US</countryISOCODE>
        <currencyISOCODE>USD</currencyISOCODE>
    </shipper>
    <detail>
        <consignee>
            <accountNumber>AN-2345</accountNumber>
            <attention>Shipping Department</attention>
            <partyInformation>
                <nameAndAddress>
                    <city>New Orleans</city>
                    <countryISOCODE>US</countryISOCODE>
                    <languageOfTheParty>en</languageOfTheParty>
                    <name>Walker Enterprises</name>
                    <postalCode>11735</postalCode>
                    <state>Louisiana</state>
                    <streetAddressOne>78 3rd
St.</streetAddressOne>
                </nameAndAddress>
            </partyInformation>
        </consignee>
        <shipmentInformation>
            <shipmentWeight>
                <measurementValue
unitOfMeasure="LBS">10.2</measurementValue>
            </shipmentWeight>
            <numberOfUnits>2</numberOfUnits>
        </shipmentInformation>
        <methodOfPayment>PAID_BY_BUYER</methodOfPayment>
        <serviceLevel>MULTIWEIGHT</serviceLevel>
        <referenceNumber>ABC123</referenceNumber>
        <referenceNumber>DEF456</referenceNumber>
        <pickupManifestDetails>
            <referenceNumber>ABC123</referenceNumber>
            <referenceNumber>DEF456</referenceNumber>
            <packageMeasurements>
                <packageLength>
                    <measurementValue
unitOfMeasure="IN">10.2</measurementValue>
                </packageLength>
                <packageHeight>
                    <measurementValue
unitOfMeasure="IN">10.2</measurementValue>
                </packageHeight>
                <packageWidth>
                    <measurementValue
unitOfMeasure="IN">10.2</measurementValue>
                </packageWidth>
                <packageWeight>
                    <measurementValue
unitOfMeasure="LBS">10.2</measurementValue>
                </packageWeight>
            </packageMeasurements>
        </pickupManifestDetails>
    </detail>
    </pickupManifestIdentification>
</pickupManifest>

```

```

        </packageMeasurements>
        <package>BOX</package>
        <document>LETTER</document>

    <deliveryConfirmation>ADULT_SIGNATURE_REQUIRED</deliveryConfirmation>
        <residential>BUSINESS_DELIVERY</residential>
        <returnService>CALL_TAG</returnService>
        <returnType>REGULAR_COD</returnType>

    <cashOnDeliveryFunds>ALL_SUPPORTED_FUNDS</cashOnDeliveryFunds>

    <specialCharge>OVERSIZED_PREMIUM_EXTRA_LENGTH</specialCharge>
    </pickupManifestDetails>
    <pickupManifestDetails>
        <referenceNumber>ABC123</referenceNumber>
        <referenceNumber>DEF456</referenceNumber>
        <packageMeasurements>
            <packageLength>
                <measurementValue
unitOfMeasure="IN">17.5</measurementValue>
            </packageLength>
            <packageHeight>
                <measurementValue
unitOfMeasure="IN">25</measurementValue>
            </packageHeight>
            <packageWidth>
                <measurementValue
unitOfMeasure="IN">2</measurementValue>
            </packageWidth>
            <packageWeight>
                <measurementValue
unitOfMeasure="LBS">10.2</measurementValue>
            </packageWeight>
        </packageMeasurements>
        <package>MIXED_UNKNOWN</package>
        <document>LETTER</document>

    <deliveryConfirmation>SIGNATURE_AND_DATE</deliveryConfirmation>
        <residential>RESIDENTIAL_DELIVERY</residential>
        <returnService>PRINT_AND_MAIL</returnService>
        <returnType>TAGLESS_COD</returnType>

    <cashOnDeliveryFunds>CASHIERS_CHECK_MONEY_ORDER_ONLY</cashOnDeliveryFunds>
        <specialCharge>SATURDAY_DELIVERY</specialCharge>
    </pickupManifestDetails>
</detail>
<detail>
    <returnService>
        <accountNumber>AN-56789</accountNumber>
        <attention>John Doe</attention>
        <partyInformation>
            <nameAndAddress>
                <city>New Orleans</city>
                <countryISOCODE>US</countryISOCODE>
                <languageOfTheParty>en</languageOfTheParty>
                <name>John's Trucking</name>
                <postalCode>11735</postalCode>
                <state>Louisiana</state>
                <streetAddressOne>2509 Tratman
Ave.</streetAddressOne>
            </nameAndAddress>
            <contactInformation>
                <communicationChannel
communicationChannelCode="EMAIL" communicationNumber="john@doe.com"/>
                <communicationChannel
communicationChannelCode="TELEPHONE" communicationNumber="268-458-5555"/>
                <personOrDepartmentName>

```

```

        <description language="en">
            <text>John Doe</text>
        </description>
    </personOrDepartmentName>
</contactInformation>
<contactInformation>
    <communicationChannel
communicationChannelCode="TELEFAX" communicationNumber="268-458-5582"/>
    <communicationChannel
communicationChannelCode="TELEPHONE" communicationNumber="268-458-5580"/>
    <personOrDepartmentName>
        <description language="en">
            <text>Receiving</text>
        </description>
    </personOrDepartmentName>
</contactInformation>
</partyInformation>
</returnService>
<shipmentInformation>
    <shipmentWeight>
        <measurementValue
unitOfMeasure="LBS">12.5</measurementValue>
    </shipmentWeight>
    <numberOfUnits>2</numberOfUnits>
</shipmentInformation>
<methodOfPayment>PAID_BY_BUYER</methodOfPayment>
<serviceLevel>MULTIWEIGHT</serviceLevel>
<referenceNumber>RN-12396</referenceNumber>
<referenceNumber>RN-456Z</referenceNumber>
<pickupManifestDetails>
    <referenceNumber>RN-123Z</referenceNumber>
    <referenceNumber>RN-456</referenceNumber>
    <packageMeasurements>
        <packageLength>
            <measurementValue
unitOfMeasure="IN">25</measurementValue>
        </packageLength>
        <packageHeight>
            <measurementValue
unitOfMeasure="IN">18.2</measurementValue>
        </packageHeight>
        <packageWidth>
            <measurementValue
unitOfMeasure="IN">8</measurementValue>
        </packageWidth>
        <packageWeight>
            <measurementValue
unitOfMeasure="LBS">12</measurementValue>
        </packageWeight>
    </packageMeasurements>
    <package>CUSTOMER_SUPPLIED</package>
    <document>DOCUMENT</document>

    <deliveryConfirmation>NAME_AND_DATE</deliveryConfirmation>
    <residential>BUSINESS_DELIVERY</residential>
    <returnService>CALL_TAG</returnService>
    <returnType>REGULAR_COD</returnType>

    <cashOnDeliveryFunds>ALL_SUPPORTED_FUNDS</cashOnDeliveryFunds>

    <specialCharge>OVERSIZED_PREMIUM_EXTRA_LENGTH</specialCharge>
</pickupManifestDetails>
<pickupManifestDetails>
    <referenceNumber>RN-1568</referenceNumber>
    <referenceNumber>RN-93147-Z</referenceNumber>
    <packageMeasurements>
        <packageLength>

```

```

                                <measurementValue
unitOfMeasure="IN">18.5</measurementValue>
                                </packageLength>
                                <packageHeight>
                                    <measurementValue
unitOfMeasure="IN">22</measurementValue>
                                </packageHeight>
                                <packageWidth>
                                    <measurementValue
unitOfMeasure="IN">11.2</measurementValue>
                                </packageWidth>
                                <packageWeight>
                                    <measurementValue
unitOfMeasure="LBS">100</measurementValue>
                                </packageWeight>
                                </packageMeasurements>
                                <package>TUBE</package>
                                <document>DOCUMENT</document>

                                <deliveryConfirmation>SIGNATURE AND DATE</deliveryConfirmation>
                                <residential>BUSINESS_DELIVERY</residential>
                                <returnService>CALL_TAG</returnService>
                                <returnType>REGULAR_COD</returnType>

                                <cashOnDeliveryFunds>ALL_SUPPORTED_FUNDS</cashOnDeliveryFunds>

                                <specialCharge>OVERSIZED_PREMIUM_EXTRA_LENGTH</specialCharge>
                                </pickupManifestDetails>
                                </detail>
                                </eanucc:pickupManifest>
                                </documentCommandOperand>
                                </eanucc:documentCommand>
                                </command>
                                </eanucc:transaction>
                                </body>
                                </eanucc:envelope>
```