

EAN.UCC XML
Business Message
Standard For
Receiving Advice

Version 1.3

July 2003



TABLE OF CONTENTS

PURPOSE	3
BACKGROUND	4
BUSINESS REQUIREMENTS DOCUMENT FOR RECEIVING ADVICE	5
FORWARD.....	9
1.0 BUSINESS OPPORTUNITY	9
1.1 Introduction	9
1.2 Problem Statement.....	9
1.3 Audience.....	9
1.4 References.....	9
1.5 Acknowledgements	10
2.0 PROCESS VIEW – GENERAL REQUIREMENTS	10
2.1 Use Case Scenario: Receiving Advice.....	12
2.2 Sequence Diagram: Shipment With Shipping Notice.....	13
2.3 Sequence Diagram: Shipment Without Shipping Notice.....	14
3.0 LOGICAL VIEW	15
RECEIVING ADVICE.....	15
4.1 Document.....	15
4.2 Entity Identification	15
4.3 Measurement Value	16
4.4 Party Identification.....	16
4.5 Receiving Advice	16
4.6 Receiving Advice Trade Item Information	16
4.7 Receiving Condition Code List	17
4.8 Reporting Code List.....	17
4.9 Shipment Details.....	17
4.10 Trade Item Identification	17
5.0 GLOBAL DATA DICTIONARY: DATA ATTRIBUTES FOR RECEIVING ADVICE	18
APPENDICES:	19
Appendix 1: Class Diagram for Receiving Advice	19
Appendix 2: Class Diagram For Document	20
Appendix 3: Class Diagram From Entity Identification.....	21
Appendix 4: Class Diagram from Trade Item Identification	22
Appendix 5: Class Diagram From Party Identification	24
Appendix 6: Class Diagram From Measurement	25
STYLE SHEET.....	26
DESCRIPTION.....	26
HTML EXAMPLE	26
GLOBAL DATA DICTIONARY.....	28
1.0 RECEIVING ADVICE CLASS DATA DESCRIPTIONS V1.3	28
INSTANCE FILE	38
DESCRIPTION.....	38
INSTANCE FILE EXAMPLE.....	38

Purpose

The purpose of this Business Message Standard is to provide the necessary information to implement this message as part of the EAN.UCC System. The information contained within this document is a direct result of the work conducted by the EAN.UCC's Plan Business Requirements Group.

The content of this document is actually a collection of material from several different sources to create a single source of information that will provide the necessary basics to understand and implement this EAN.UCC Business Message Standard. The core of this document originates from the Business Requirements Document that is created by the Business Requirements Groups to define the business needs that are to be addressed by this Message. The document then provides the technical details needed to implement the message: a report from the Global Data Dictionary, StyleSheet and Instance File.

This Business Message Standard is meant to be used in conjunction with the EAN.UCC XML Schemas that are available on the EAN and UCC websites. The implementer of these standards needs to be aware of the interrelationship amongst the XML Schemas and the importance of using only interoperable versions.

The reader will notice as they progress through this document that there are several different 'levels' of information that is presented. We begin with the business rationale for the message and then move into the technical details of how and what is needed to exchange this message. This design is deliberate to reach the broadest audience and to meet their needs. Based upon the reader's experience and intentions, specific sections of this document may be more valuable than others. This design and content of this document is based upon the direct feedback from our user community and as such, we are constantly revising and refining how and what we present.

Background

EAN.UCC Business Message Standard:	Receiving Advice	
Business Requirement Group:	Deliver	
Business Requirement Document:	Receiving Advice	
Business Requirements Group Manager:	Philip Jerred	e.Centre
Global Data Dictionary:	EAN.UCC Global Data Dictionary v1.3	
Schemas:	EAN.UCC Schemas v1.3	
Schemas have been tested on Parser(s) and Version(s):	XML Spy Version 4.4, Xerces, XSV	

***Business Requirements Group
(BRG)***

**Business Requirements
Document For
RECEIVING ADVICE**

Version 1.0.2

June 30, 2003

DOCUMENT HISTORY

Document Number:	1.0.2
Document Version:	1.0.2
Document Issue Date	June 30, 2003

Document Summary

Document Title	EAN•UCC – Business Requirements Document For “Receiving Advice”
Owner	Deliver BRG Doug Harness, Vice Chair Philip Jerred- BRG Manager philip.jerred@e-centre.org.uk
Status	ITRG Approved

Document Change History Log

Date of Change	Version	Reason for Change	Summary of Change	CCR #
May 6, 2002	0.0.0	Initial BRD for Deliver BRG review		01-000086
May 20, 2002	0.0.1	Deliver BRG comments	Mark-ups for change.	01-000086
May 20, 2002	0.0.2	Additional BRG comments	Mark-ups for change.	01-000086
June 4, 2002	0.0.3	Incorporation of Deliver BRG comments.	Changed ASN to shipping notification in the document text and on the sequence diagrams. Added attributes to the Receiving Condition Code List. Used a common class, string, for the purchase order number and consignor shipment number. Also made minor editorial changes.	01-000086
June 6, 2002	0.0.4	Incorporation of XML team comments.	1. Added common class “entity identification” to provide a receiving advice ID. 2. Added class diagram for entity identification (an appendix). 3. Changed the direction of the arrow from root to document.	01-000086
July 12, 2002	0.0.5	Incorporate BRG comments from July 11, 2002 meeting	1. Corrected spelling errors for consignor and consignee in text and on diagrams. 2. Changed 2.1.4 3. Revised 2 nd sentence in 4.6 Party Identification. 4. Added new sentence to 4.7 Quantity. 5. 4.13 Shipment Details now reads	01-000086

			“...consignor shipment identification... 6. 4.14..consignor shipment identification is mandatory and purchase order identification is optional.	
September 5, 2002	1.0.0	Upgrade class diagrams from IUML/BUML/BRD review.	Changed appendix 1, Receiving Advice Class Diagram to incorporate the latest, best modeling practices. Revised Section 4 to align with the class diagram. Revised appendices to match common classes on Appendix 1. All changes conform to current approved business requirements. No business requirements have been changed.	01-000086
April 11, 2003	1.0.1	Harmonisation version 1.3		
June 30, 2003	1.0.2	Incorporation of ITRG Harmonisation Comments	Replaced Entity Identification and Measurement class diagram	

Approvals

Name	Title	Signature	Date

Table Of Contents

FORWARD.....	9
1.0 BUSINESS OPPORTUNITY	9
1.1 Introduction	9
1.2 Problem Statement.....	9
1.3 Audience.....	9
1.4 References.....	9
1.5 Acknowledgements	10
2.0 PROCESS VIEW – GENERAL REQUIREMENTS	10
2.1 Use Case Scenario: Receiving Advice.....	12
2.2 Sequence Diagram: Shipment With Shipping Notice.....	13
2.3 Sequence Diagram: Shipment Without Shipping Notice.....	14
3.0 LOGICAL VIEW	15
RECEIVING ADVICE	15
4.1 Document.....	15
4.2 Entity Identification	15
4.3 Measurement Value	16
4.4 Party Identification.....	16
4.5 Receiving Advice	16
4.6 Receiving Advice Trade Item Information.....	16
4.7 Receiving Condition Code List	17
4.8 Reporting Code List.....	17
4.9 Shipment Details.....	17
4.10 Trade Item Identification	17
5.0 GLOBAL DATA DICTIONARY: DATA ATTRIBUTES FOR RECEIVING ADVICE	18
APPENDICES:	19
Appendix 1: Class Diagram for Receiving Advice	19
Appendix 2: Class Diagram For Document	20
Appendix 3: Class Diagram From Entity Identification.....	21
Appendix 4: Class Diagram from Trade Item Identification	22
Appendix 5: Class Diagram From Party Identification	24
Appendix 6: Class Diagram From Measurement	25

Forward

The purpose of the Business Requirements Document is to document a process-to-data approach using the Unified Modeling Language (UML) notation. Processes and their business requirements are clearly understood because of the use of formal modeling with the UML models. Agreed to models permit the application of the data elements to support the processes. The biggest benefit of this process-to-data approach is the alignment of the model to fit the business need.

1.0 Business Opportunity

1.1 Introduction

Change Request #01-000086 has identified a need to provide for a proof of delivery.

1.2 Problem Statement

An event in the supply chain can include delivery of trade items to a location and that requires a message of acknowledgement that the trade items were received. A simple message is required that can pass receiving information to the consignor from the consignee.

Note: This problem statement does not apply to internal operations such as internal stock transfers.

1.3 Audience

The audiences for this document are consignee and consignor.

1.4 References

- Change Request #01-000086
- DTG Glossary
- BRG Deliver

1.5 Acknowledgements

Doug Harness	Fleming Companies, Inc. CoChair
Regina A. De Baker	Watkins Associated Industries
Becky Dettling	3M Company
Sue Donarski	Schneider Logistics
K. Wayne Gingerich	Werner Enterprises
Stephanie Hodge-Daniels	Levi Strauss & Co.
Kent Jamison	Consolidated Freightways
Kari Melhus	Target Corporation
Jeff Miller	Kraft Foods, Inc.
Debra Noyes	Johnsonville Sausage, L.L.C.
Mike Osiecki	Best Buy Company, Inc.
Jamie Rodriquez	UCC – BRG Manager
Tom Heist	UCC – Business Process Modeler
Distribution Task Group	
Paul Martin	General Mills
Ed Jesus	CHEP
Paula Giovanetti	Arrow Products

2.0 Process View – General Requirements

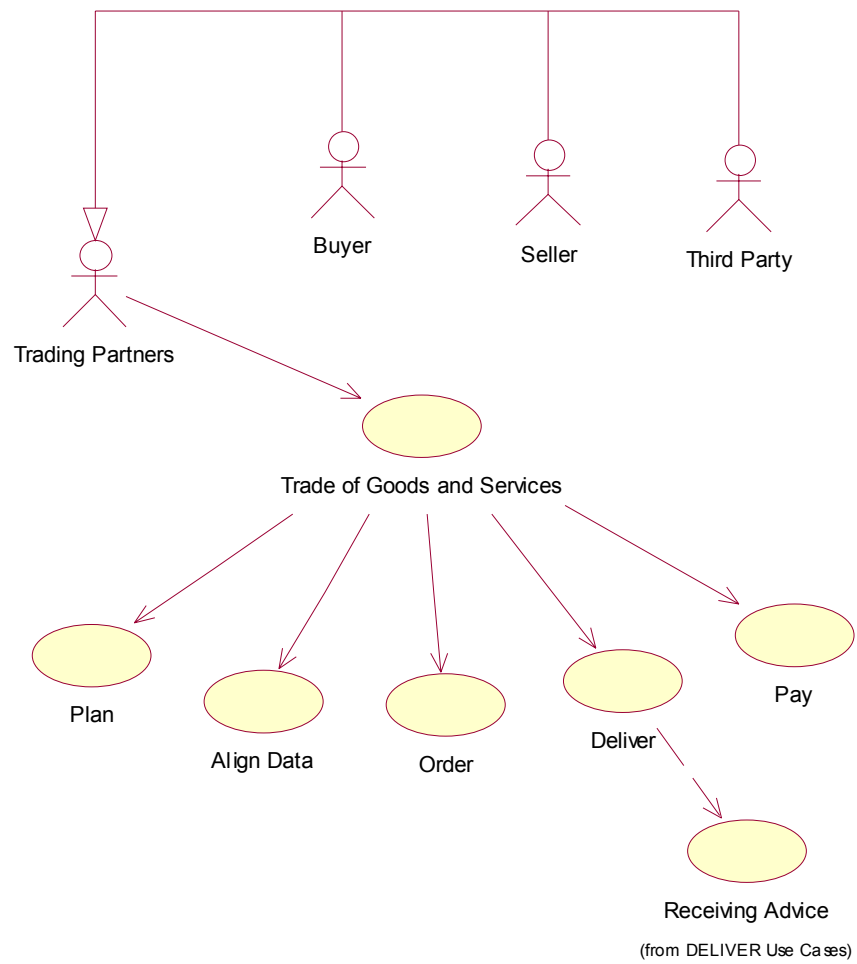
The Consignor and the Consignee must complete all their planning and data alignment activities. Then, together they must be prepared to send and receive electronic transactions.

The Consignor, the party that initiates the transport request, shall prepare and document the contents of the shipment. The Consignor may, prior to delivery, send a notification of goods shipped to the Consignee.

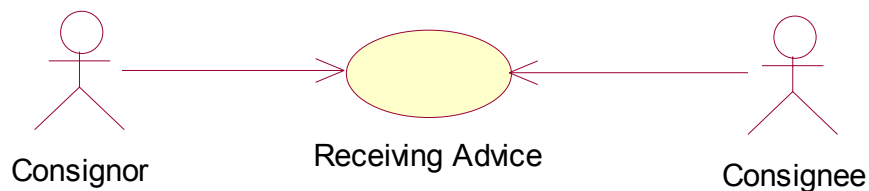
The Consignor shall include the shipping documents with the shipment being transported by the carrier, so the shipping documents arrive with the shipment. These documents may be in the form of a:

- Packing Slip
- Bill of Lading

The Consignee, the party that receives the goods, shall compare the physical count of trade items received to the shipping documents. The results of this comparison shall be the basis for the content of the Receiving Advice.



2.1 Use Case Scenario: Receiving Advice



Note: In the supply chain the roles of Consignor and Consignee could be a type of Buyer, Seller or 3rd Party.

2.1.1 Business Opportunities/Problem Statement

The consignor has transported a shipment with documentation to the consignee. The consignee has received the shipment and compared the physical count of the trade items received to the shipping documents. The consignee uses an electronic message to advise the consignor of the trade items received.

2.1.2 Stakeholders: Actors

This is a two party system. The primary or human actors are Consignor and Consignee.

2.1.3 Process Start State

Shipment is received by Consignee.

2.1.4 Process End State

Consignor receives Receiving Advice from Consignee.

2.1.5 Preconditions

Both parties have established their trading partner agreement, aligned their data and are capable of sending and receiving transactions.

2.1.6 Successful End Condition

Consignor has received the Receiving Advice from Consignee.

2.1.7 Failed End Condition

Consignor fails to receive the Receiving Advice from Consignee.

2.1.8 Main Process Flow – With Consignor Sending Shipping Notification

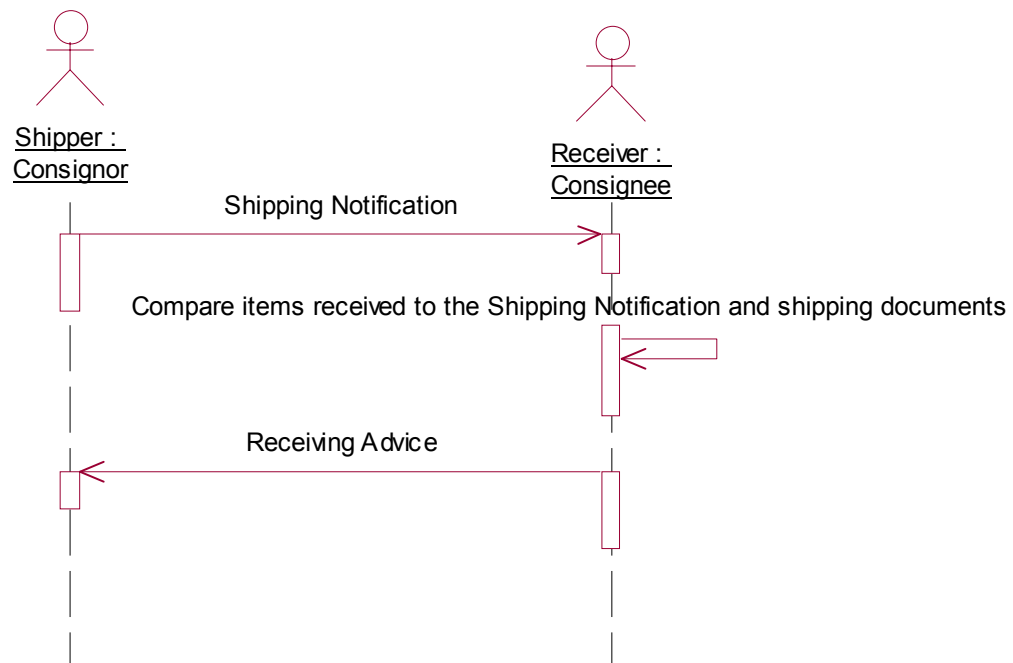
1. Consignee receives shipping notification.
2. Consignee receives shipment and shipping documentation.
3. Consignee compares physical receipt of goods to the shipping notification and shipping documents.
4. Consignee sends Receiving Advice.

2.1.9 Alternate Process Flow – Consignor Does Not Send Shipping Notification

1. Consignee receives shipment and shipping documentation.
2. Consignee compares physical receipt of goods to the shipping documentation.
3. Consignee sends Receiving Advice.

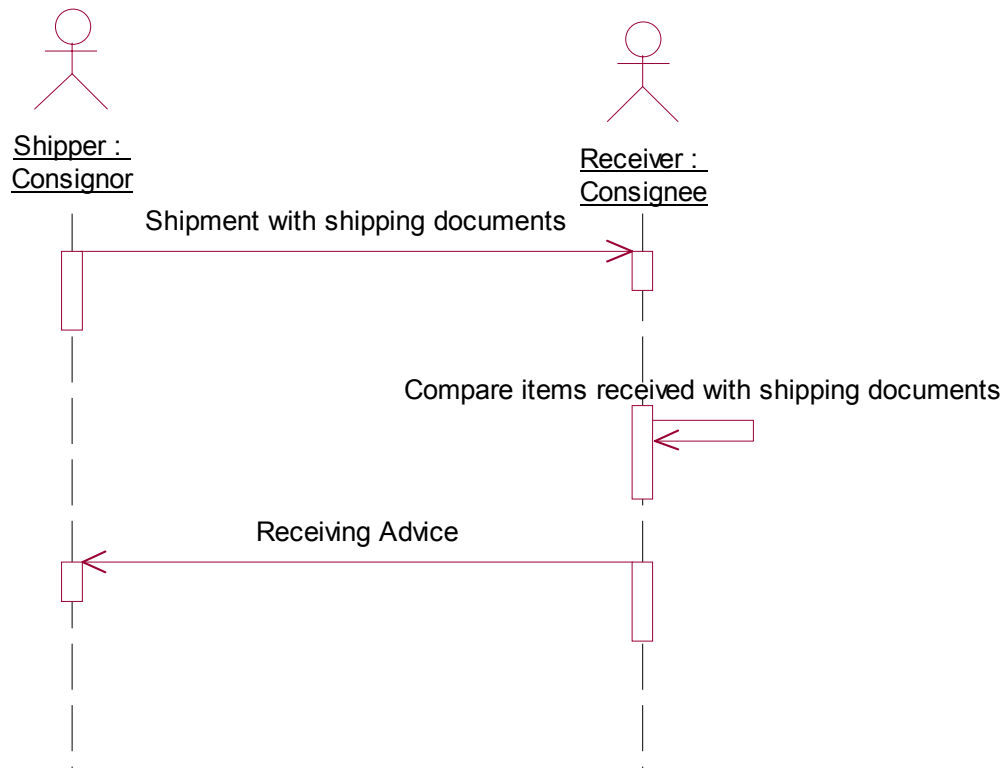
2.2 Sequence Diagram: Shipment With Shipping Notice

The diagram illustrates the sequence using the main process flow. In this diagram the Shipping Notification could be electronic, fax or e-mail.



2.3 Sequence Diagram: Shipment Without Shipping Notice

The diagram illustrates the sequence using the alternate process flow. In this diagram the shipping documents could be a Bill of Lading (BOL) or a Packing List.



3.0 Logical View

The class diagram for Receiving Advice, Appendix 1, uses color-coding: Red is used to indicate the root class for these business requirements. Grey is used to indicate classes that are common to more than one class diagram, supporting the practice and benefits of class re-usability. Yellow is used to indicate classes that are specific at this time to the receiving advice.

Class diagrams for the common classes shown on the Receiving Advice Class Diagram (Appendix 1) are included as appendices for reference.

Receiving Advice

The following is a listing of the supporting data classes. These data classes are described in the sections below and are illustrated in the class diagrams included as appendices to this document. The class diagrams are provided as a reference to the reader.

- Document
- Entity Identification
- Measurement Value
- Party Identification
- Receiving Advice
- Receiving Advice Trade Item Information
- Receiving Condition Code List
- Reporting Code List
- Shipment Details
- Trade Item Identification

4.1 Document

This class originates from Document and is a class that is used in many class diagrams. This class is mandatory. It contains four attributes.

- Content Version
- Creation Date
- Document Structure Version
- Last Update Date

4.2 Entity Identification

A Receiving Advice must have a unique identification. The Entity Identification class originates from Entity Identification in the common library. This class provides for the creator's identification of the Receiving Advice. This class is mandatory. It contains one attribute.

- Unique Creator Identification

4.3 Measurement Value

This external class originates from Measurement and is a class that is used in many class diagrams. This class includes the number of units (quantity) and unit of measure being reported as the quantity received. There is multiple and numerous possible unit of measures. The EAN.UCC system refers to the UN/Cefact's UN/ECE Recommendation 20 list for the possible unit of measure. The unit of measure is not broken down into categories of UOM such as "Time UOM, Weight UOM, Dimensional UOM, or Net Content UOM". It's a list of all the possible units of measure. This class is mandatory. It contains one attribute.

- Unit Of Measure

4.4 Party Identification

This class originates from Party Identification and is reused in many class diagrams. This mandatory class provides the identification of the consignor and consignee. It has no attributes, but provides for identification by use of the GLN. It also provides a list of alternate types of identification.

4.5 Receiving Advice

This is the root class for these business requirements. It is inherited from the Document class. There are five mandatory associations

- two with Party Identification with roles of consignor and consignee,
- with Receiving Advice Trade Item Information (possible multiple occurrences),
- with Shipment Details,
- with Entity Identification with a role of receiving advice identification.

The root class has no attributes.

4.6 Receiving Advice Trade Item Information

This class is used to provide the detailed information of the trade items received, by association to other classes. This class holds the quantity of trade items indicated as shipped on the advice. This class is mandatory per trade item in a receiving advice. It has one attribute.

- Quantity Indicated As Shipped

4.7 Receiving Condition Code List

This class provides for the selection of a receiving condition code from a list. This class is mandatory. This class has the following attributes:

- Adjusted Cumulative Supplier Shipped Quantity
- Damaged Product Or Container
- Good Condition
- Hold
- Incorrect Product
- Material Scrapped
- Non-standard Container
- Not Received Serial Number Required
- Quality Problem
- Quantity Over
- Quantity Over-Return To Supplier
- Quantity Received Cannot Process Because No Matching Serial Number
- Quantity Received Processed With No Matching Serial Number
- Quantity Short
- Rejected

4.8 Reporting Code List

This class provides a code to indicate if the Receiving Advice is a full detail report or an exception report. This class is mandatory. This class has two attributes:

- Exception
- Full Details

4.9 Shipment Details

This class provides for the reporting of the shipment details which includes the receiving date, consignor shipment identification and optional purchase order identification. This class is mandatory. This class has two attributes.

- Consignor Shipment Identification
- Receiving Date

4.10 Trade Item Identification

This class originates from Trade Item Identification and is a class that is used in many class diagrams. This class is mandatory and is used to identify the trade items received.

5.0 Global Data Dictionary: Data Attributes for Receiving Advice

ReceivingAdvice

ReceivingAdviceTradeItemInformation

quantityIndicatedAsShipped: TBD

ReceivingConditionCodeList

ADJUSTED_CUMULATIVE_SUPPLIER_SHIPPED_QUANTITY

DAMAGED_PRODUCT_OR_CONTAINER

GOOD_CONDITION

HOLD

INCORRECT_PRODUCT

MATERIAL_SCRAPPED

NON_STANDARD_CONTAINER

NOT_RECEIVED_SERIAL_NUMBER_REQUIRED

QUALITY_PROBLEM

QUANTITY_OVER

QUANTITY_OVER_RETURN_TO_SUPPLIER

QUANTITY_RECEIVED_CANNOT_PROCESS_BECAUSE_NO_MATCHING_SERIAL_NUMBER

QUANTITY_RECEIVED_PROCESSED_WITH_NO_MATCHING_SERIAL_NUMBER

QUANTITY_SHORT

ReportingCodeList

EXCEPTION

FULL_DETAILS

ShipmentDetails

consignorShipmentIdentification: TBD

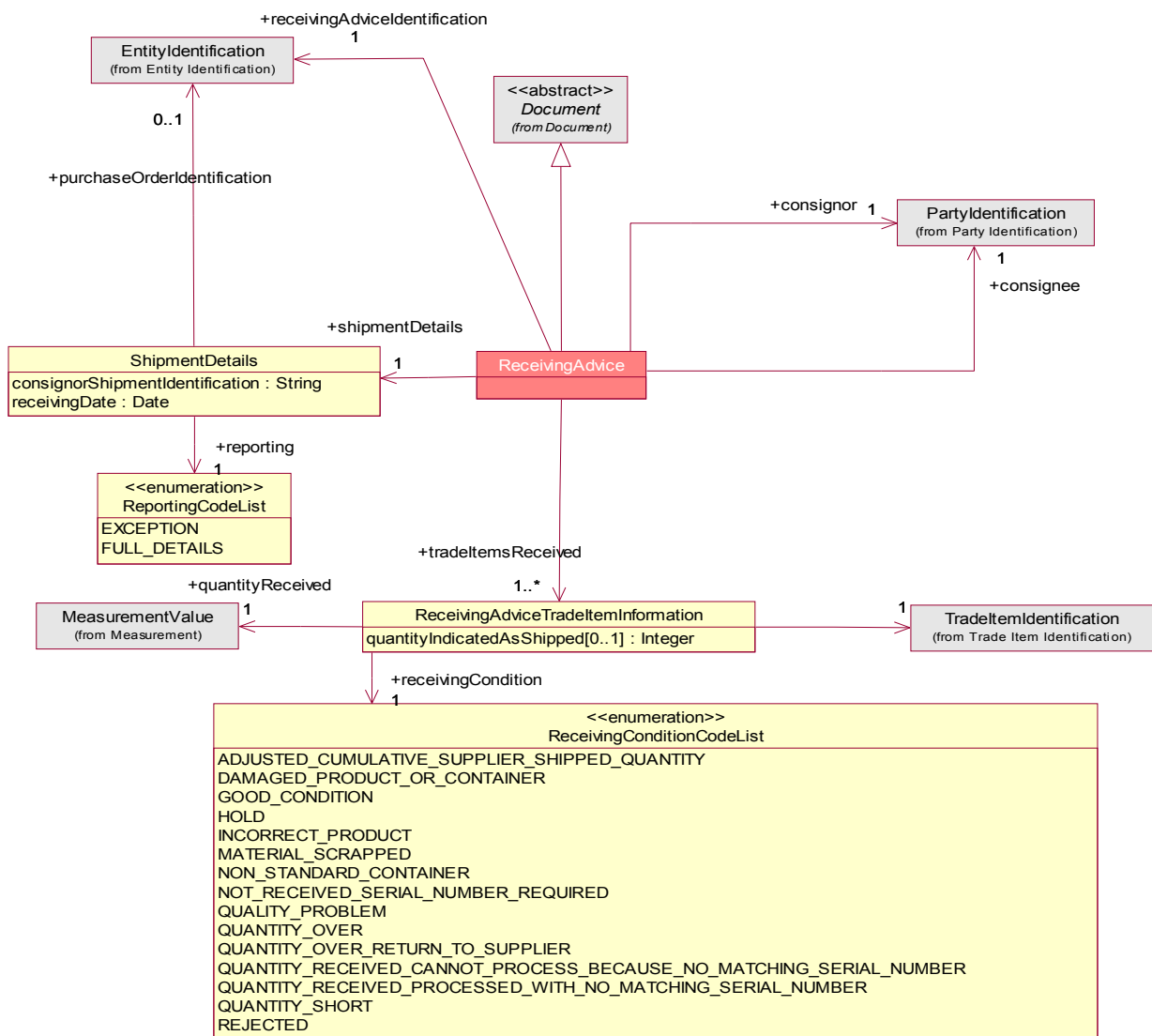
receivingDate: TBD

Appendices:

The appendices to this document are informative and provided only for reference.

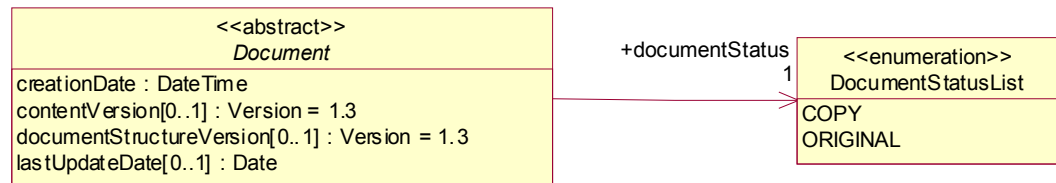
Appendix 1: Class Diagram for Receiving Advice

Business Process: DELIVER: Receiving Advice



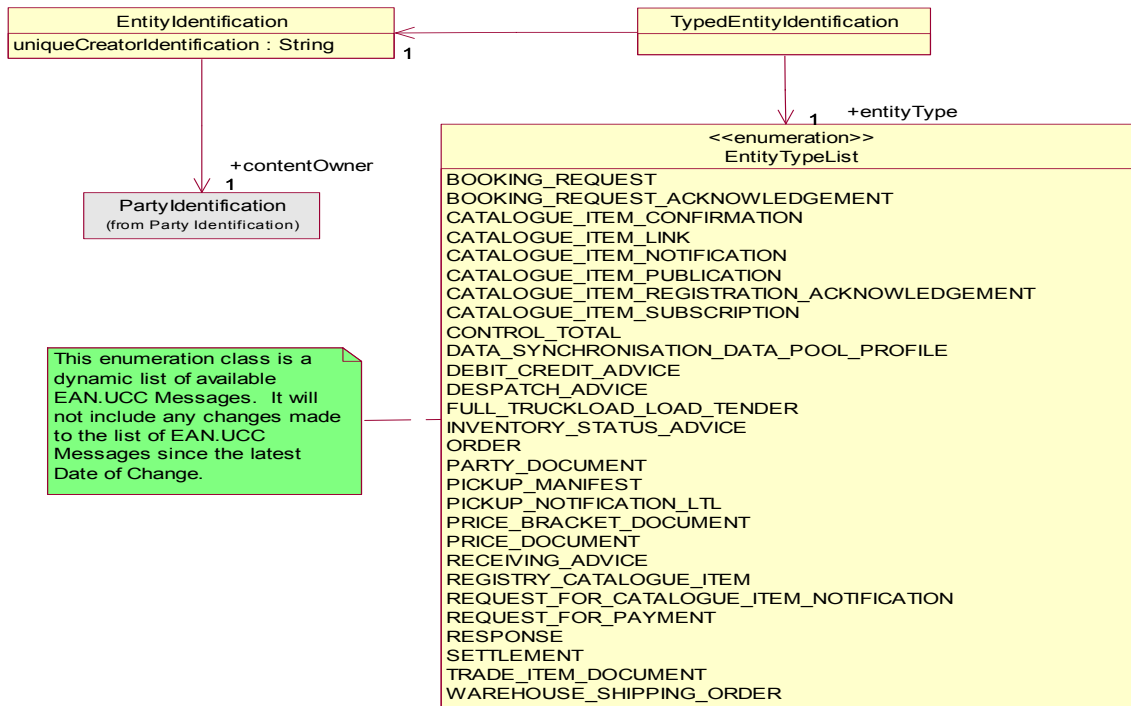
Appendix 2: Class Diagram For Document

Common Library :Common: Components: Document



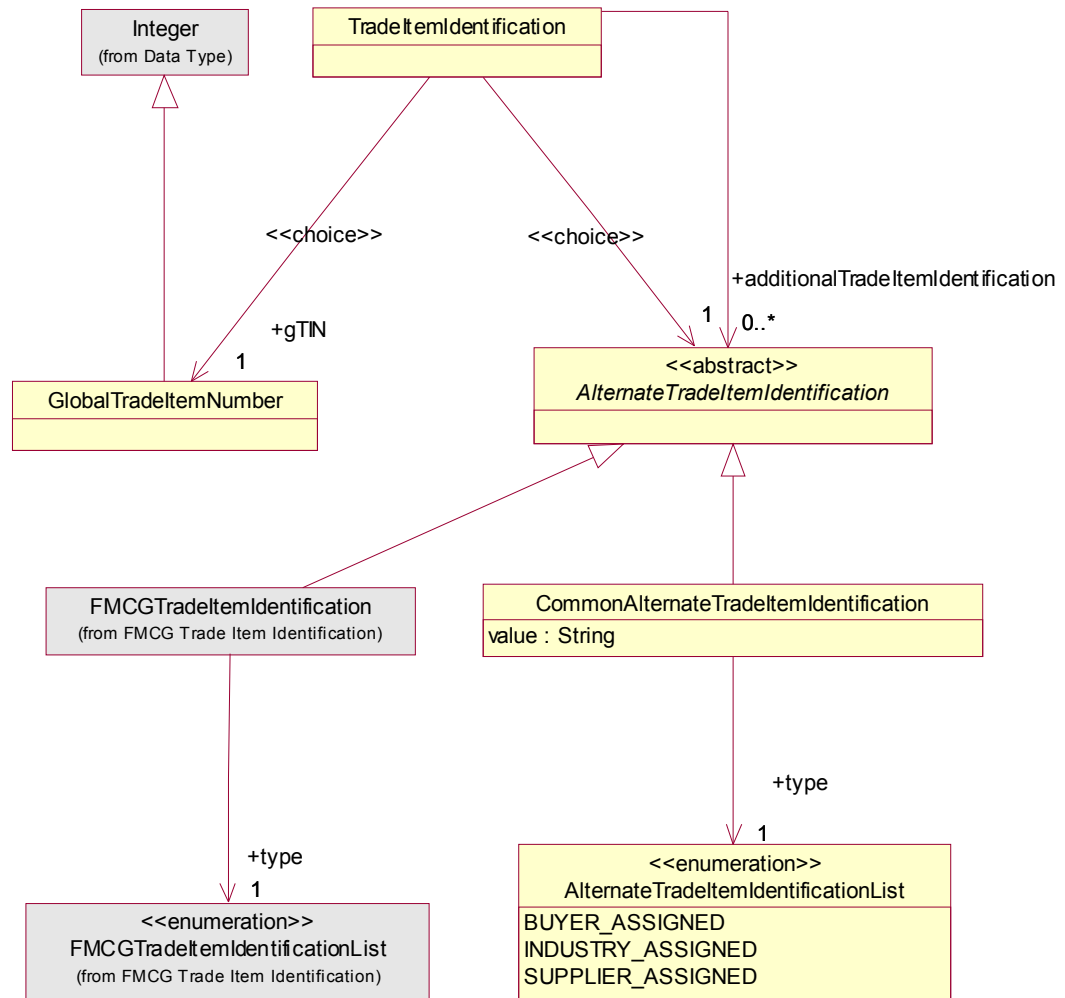
Appendix 3: Class Diagram From Entity Identification

Common Library: Common: Identification: Entity Identification

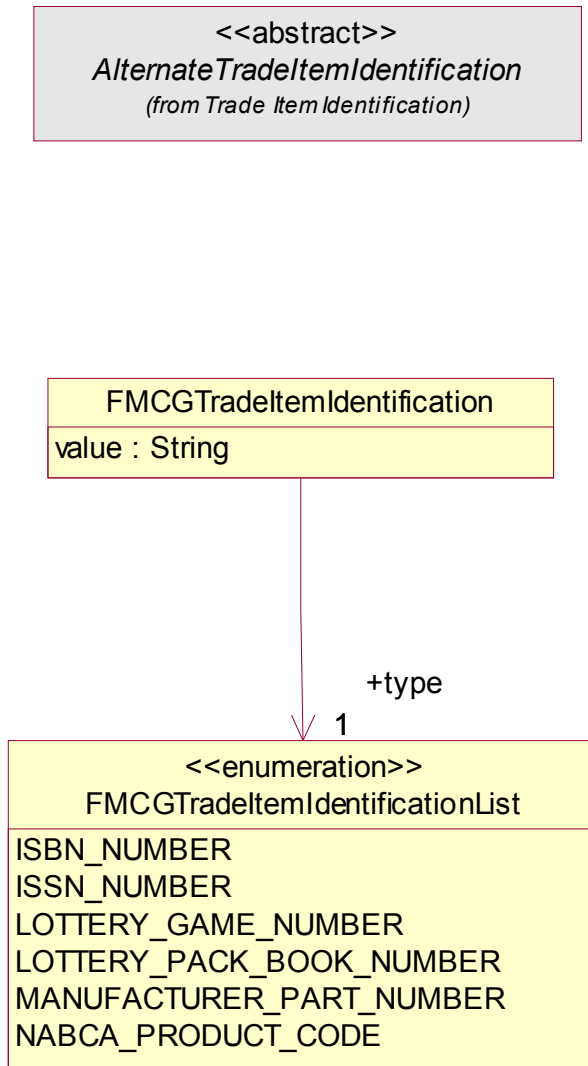


Appendix 4: Class Diagram from Trade Item Identification

Common Library: Common: Identification: Trade Item Identification

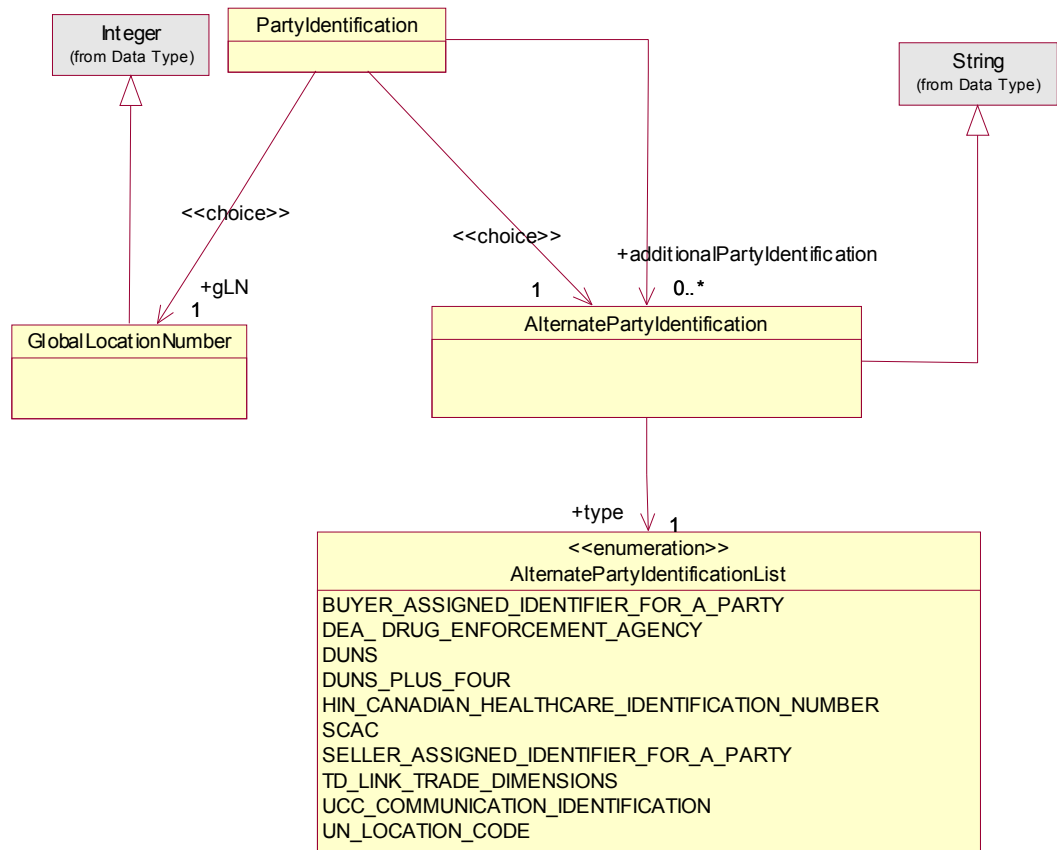


Extension: FMCG: FMCG Trade Item Identification



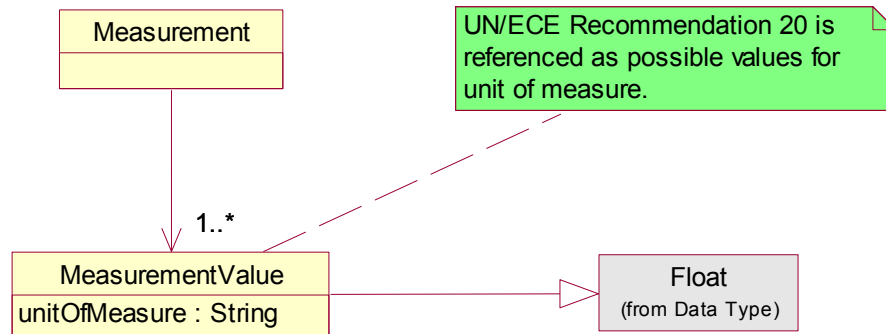
Appendix 5: Class Diagram From Party Identification

Common Library: Common: Identification: Party Identification



Appendix 6: Class Diagram From Measurement

Common Library: Common: Components :Measurement



Style Sheet

Description

This HTML has been created using a Style Sheet that is a visual representation of the data. It is not an actual Style Sheet, but an example of what a Style Sheet may look like.

HTML Example

Message MSG-123			
Creation Date	August 02, 2001 12:00:00	Representing Party	0012345000065
Msg From Party	0614141000012	Msg To Party	0012345000065

Transaction	Creator ID = OJGROWER-TRANS-12345	Content Owner = 0614141000012
--------------------	--	--------------------------------------

Command ADD	Creator ID = OJGROWER-ITEM-12345	Content Owner = 0614141000012
--------------------	---	--------------------------------------

Receiving Advice Document	Creator ID = RAD-123	Content Owner = 0614141000012
----------------------------------	-----------------------------	--------------------------------------

Document Information			
Creation Date	January 10, 2004 12:00:01	Last Update Date	October 01, 2004
Content Version	1.3	Doc Structure Version	1.3
Status	ORIGINAL		

Receiving Advice Information			
Consignor	0614141000012	Consignee	0614141000034

Shipment Details**Consignor
Shipment ID**

SHP-123

Receiving Date

August 13, 2004

Reporting

FULL_DETAILS

Purchase Order**Creator ID**

PO-123

Content Owner

0614141000012

Received Items

Trade Item ID	Quantity Received	Quantity Indicated as Shipped	Receiving Condition
00012345000065	2 EA	2	GOOD_CONDITION
00012345000099	1 EA	1	HOLD

GLOBAL DATA DICTIONARY

1.0 Receivng Advice Class Data Descriptions v1.3

Class Name	Role Name	Enumerated Value for List Class	Attribute Name	Description	Min/Max Size	M/O	EAN.UCC XSD
AlternatePartyIdentification	additionalPartyIdentification			Only one primary party identifier is used for each party. If an alternate identifier, other than GLN is used, there is no guarantee of data integrity across the process. It is the responsibility of the company electing the choice to ensure data integrity.		O	Identification
AlternatePartyIdentificationList	type			Only one primary party identifier is used for each party. If an alternate identifier, other than GLN is used, there is no guarantee of data integrity across the process. It is the responsibility of the company electing the choice to ensure data integrity.		M	Identification

		BUYER_ASSIGNED_IDENTIFIER_FOR_A_PARTY		This optional code will be used for cross-reference on a one-to-one relationship.			
		DEA_DRUG_ENFORCEMENT_AGENCY		This optional code will be used for cross-reference on a one-to-one relationship.			
		DUNS		This optional code will be used for cross-reference on a one-to-one relationship.			
		DUNS_PLUS_FOUR		This optional code will be used for cross-reference on a one-to-one relationship.			
		HIN_CANADIAN_HEALTHCARE_IDENTIFICATION_NUMBER		This optional code will be used for cross-reference on a one-to-one relationship.			
		SCAC		This optional code will be used for cross-reference on a one-to-one relationship.			
		SELLER_ASSIGNED_IDENTIFIER_FOR_A_PARTY		This optional code will be used for cross-reference on a one-to-one relationship.			
		TD_LINK_TRADE_DIMENSIONS		This optional code will be used for cross-reference on a one-to-one relationship.			

		UCC_COMMUNICATION_IDENTIFICATION		This optional code will be used for cross-reference on a one-to-one relationship.			
		UN_LOCATION_CODE		This optional code will be used for cross-reference on a one-to-one relationship.			
AlternateTradeItemIdentification	additionalTradeItemIdentification			AlternateTradeItemIdentification is an abstract class from Item Identification used to identify a value for item identification other than GTIN.		O	Identification
AlternateTradeItemIdentificationList		type		Contains an enumeration list from the CommonAlternateTradeItemIdentificationClass.		M	Identification
		BUYER_ASSIGNED		This optional code will be used to cross-reference the Vendors internal trade item number to the GTIN in a one-to-one relationship.			
		INDUSTRY_ASSIGNED		This optional code will be used to cross-reference the Vendors internal trade item number to the GTIN in a one-to-one relationship.			

		SUPPLIER_ASSIGNED		This optional code will be used to cross-reference the Vendors internal trade item number to the GTIN in a one-to-one relationship.			
CommonAlternateTradeItemIdentification				Industry neutral Trade Item Identification.		M	Identification
			value	The default value to be used for the field when that field is not present in the file.	1/80	M	
Document				This class is used to specify the basic information about the context of the message.		M	Components
			creationDate	DateTime		M	
			contentVersion	Version = 1.3		O	
			documentStructureVersion	Version =1.3		O	
			lastUpdateDate	Date		O	
DocumentStatusList	documentStatus			Indicates if the document is a copy or an original.		M	Components
		COPY		A copy of the original document			
		ORIGINAL		The original document			

EntityIdentification	purchaseOrderIdentification			Receiving Advice must have a unique identification. The Entity Identification class originates from Entity Identification in the common library. This class provides for the creator's identification of the Receiving Advice. This class is mandatory.		O	Identification
	receivingAdviceIdentification					M	
			uniqueCreatorIdentification			M	
FMCGTradeItemIdentification						O	FMCGIdentification
			value	The default value to be used for the field when that field is not present in the file.	1/80	M	
FMCGTradeItemIdentificationList	type					M	FMCGIdentification
		ISBN_NUMBER		ISBN Number			
		ISSN_NUMBER		ISSN Number			
		LOTTERY_GAME_NUMBER		Lottery Game Number			
		LOTTERY_PACK_BOOK_NUMBER		Lottery Pack Book Number			
		MANUFACTURER_PART_NUMBER		Manufacturer Part Number			

		NABCA_PRODUCT_CODE		NABCA Product Code			
GlobalLocationNumber	gLN			The Global Location Number (GLN) is a structured identification of a physical location, legal or functional entity within an enterprise. The GLN is the recommended primary party identifier. Each party identified in the trading relationship must have a prim		O	Identification
GlobalTradeItemNumber	gTIN			A particular Global trade item Number, a numerical value used to uniquely identify a trade item. A Trade item is any trade item (product or service) upon which there is a need to retrieve pre-defined information and that may be planned, priced, ordered, d		O	Identification
MeasurementValue	quantityReceived			This external class originates from Measurement and is a class that is used in many class diagrams. This class includes the number of units (quantity) and unit of measure being reported as the inventory. This class is mandatory.		M	DeliverComponentLibrary

			unitOfMeasure	UN/ECE Recommendation 20. Unit of measure code.		M	
PartyIdentification	consignee			This class originates from Party Identification and is reused in many class diagrams. This mandatory class provides the identification of the consignor and consignee. It has no attributes, but provides for identification by use of the GLN. It also provides a list of alternate types of identification.		M	Identification
	consignor					M	
	contentOwner						
ReceivingAdvice				This is the root class for the Receiving Advice Message.		M	ReceivingAdvice

ReceivingAdviceTradeItemIdentification	tradeItemsReceived			This class is used to provide the detailed information of the trade items received, by association to other classes. This class holds the quantity of trade items indicated as shipped on the advice. This class is mandatory per trade item in a receiving advice. It has one attribute. Quantity Indicated As Shipped		M	ReceivingAdvice
			quantityIndicatedAsShipped			O	
ReceivingConditionCodeList	receivingCondition			This class provides for the selection of a receiving condition code from a list. This class is mandatory.		M	ReceivingAdvice
		ADJUSTED_CUMULATIVE_SUPPLIER_SHIPPED_QUANTITY		Adjusted Cumulative Supplier Shipped Quantity			
		DAMAGED_PRODUCT_OR_CONTAINER		Damaged Product Or Container			
		GOOD_CONDITION		Good Condition			
		HOLD		Hold			
		INCORRECT_PRODUCT		Incorrect Product			
		MATERIAL_SCRAPPED		Material Scrapped			
		NON_STANDARD_CONTAINER		Non-standard Container			

		NOT_RECEIVED_SERIAL_NUMBER_REQUIRED		Not Received Serial Number Required			
		QUALITY_PROBLEM		Quality Problem			
		QUANTITY_OVER		Quantity Over			
		QUANTITY_OVER_RETURN_TO_SUPPLIER		Quantity Over-Return To Supplier			
		QUANTITY_RECEIVED_CANNOT_PROCESS_BECAUSE_NO_MATCHING_SERIAL_NUMBER		Quantity Received Cannot Process Because No Matching Serial Number			
		QUANTITY_RECEIVED_PROCESSED_WITH_NO_MATCHING_SERIAL_NUMBER		Quantity Received Processed With No Matching Serial Number			
		QUANTITY_SHORT		Quantity Short			
		REJECTED		Rejected			
ReportingCodeList	reporting			This class provides a code to indicate if the Receiving Advice is a full detail report or an exception report. This class is mandatory.		M	ReceivingAdvice
		EXCEPTION		Exception			
		FULL_DETAILS		Full Details			

ShipmentDetails	shipmentDetails			This class provides for the reporting of the shipment details which includes the receiving date, consignor shipment identification and optional purchase order identification. This class is mandatory. This class has two attributes. · Consignor Shipment Identification · Receiving Date	M	ReceivingAdvice
			consignorShipmentId entification		M	
			receivingDate		M	
TradeItemIdentification				This class originates from Trade Item Identification and is a class that is used in many class diagrams. This class is mandatory and is used to identify the trade items received.	M	TradeItemIdentificat ion

Instance File

Description

The Instance File is an example of what the schema may look like when it includes live data. This can be used as comparison to a completed schema and can serve as a point of reference for development.

Instance File Example

```
<?xml version="1.0" encoding="UTF-8"?>
<?xml-stylesheet type="text/xsl" href="../../4_XSL/Main.xsl"?>
<!-- This is a sample file-->
<eanucc:envelope xmlns:xsi="http://www.w3.org/2001/XMLSchema-instance"
  xmlns:eanucc="http://www.ean-ucc.org/schemas/1.3/eanucc" xsi:schemaLocation="http://www.ean-ucc.org/schemas/1.3/eanucc ../../2_XSD_PROXY/ReceivingAdviceProxy.xsd"
  communicationVersion="1.3">
  <messageHeader creationDate="2001-08-02T12:00:00">
    <userId>OJGROWER-12345</userId>
    <password>SECRET</password>
    <messageIdentifier>MSG-123</messageIdentifier>
    <to>
      <gln>0012345000065</gln>
    </to>
    <from>
      <gln>0614141000012</gln>
    </from>
    <representingParty>
      <gln>0012345000065</gln>
    </representingParty>
  </messageHeader>
  <body>
    <eanucc:transaction>
      <entityIdentification>
        <uniqueCreatorIdentification>OJGROWER-TRANS-12345</uniqueCreatorIdentification>
        <contentOwner>
          <gln>0614141000012</gln>
        </contentOwner>
      </entityIdentification>
      <command>
        <eanucc:documentCommand>
          <documentCommandHeader type="ADD">
            <entityIdentification>
              <uniqueCreatorIdentification>OJGROWER-ITEM-12345</uniqueCreatorIdentification>
              <contentOwner>
                <gln>0614141000012</gln>
              </contentOwner>
            </entityIdentification>
          </documentCommandHeader>
          <documentCommandOperand>
```

```

<eanucc:receivingAdvice creationDate="2004-01-10T12:00:01"
documentStatus="ORIGINAL" contentVersion="1.3" documentStructureVersion="1.3"
lastUpdateDate="2004-10-01">
  <receivingAdviceIdentification>
    <uniqueCreatorIdentification>RAD-123</uniqueCreatorIdentification>
    <contentOwner>
      <gln>0614141000012</gln>
    </contentOwner>
  </receivingAdviceIdentification>
  <consignor>
    <gln>0614141000012</gln>
  </consignor>
  <consignee>
    <gln>0614141000034</gln>
  </consignee>
  <shipmentDetails>
    <consignorShipmentIdentification>SHP-
123</consignorShipmentIdentification>
    <receivingDate>2004-08-13</receivingDate>
    <reporting>FULL_DETAILS</reporting>
    <purchaseOrderIdentification>
      <uniqueCreatorIdentification>PO-123</uniqueCreatorIdentification>
      <contentOwner>
        <gln>0614141000012</gln>
      </contentOwner>
    </purchaseOrderIdentification>
  </shipmentDetails>
  <tradeItemsReceived>
    <tradeItemIdentification>
      <gtin>00012345000065</gtin>
    </tradeItemIdentification>
    <quantityReceived unitOfMeasure="EA">2</quantityReceived>
    <quantityIndicatedAsShipped>2</quantityIndicatedAsShipped>
    <receivingCondition>GOOD_CONDITION</receivingCondition>
  </tradeItemsReceived>
  <tradeItemsReceived>
    <tradeItemIdentification>
      <gtin>00012345000099</gtin>
    </tradeItemIdentification>
    <quantityReceived unitOfMeasure="EA">1</quantityReceived>
    <quantityIndicatedAsShipped>1</quantityIndicatedAsShipped>
    <receivingCondition>HOLD</receivingCondition>
  </tradeItemsReceived>
</eanucc:receivingAdvice>
</documentCommandOperand>
</eanucc:documentCommand>
</command>
</eanucc:transaction>
</body>
</eanucc:envelope>

```