

EAN.UCC XML
Business Message
Standard For
Product Activity

Version 1.3

July 2003



TABLE OF CONTENTS

| | |
|---|-----------|
| PURPOSE | 3 |
| BACKGROUND | 4 |
| BUSINESS REQUIREMENTS DOCUMENT FOR PRODUCT ACTIVITY..... | 5 |
| 1.0 INTRODUCTION..... | 8 |
| 1.1 Overview – Product Activity..... | 8 |
| 1.2 Background..... | 9 |
| 2.0 PLAYERS AND ROLES | 11 |
| 3.0 REQUIREMENTS..... | 12 |
| 3.1 General Requirements | 12 |
| 3.2 Product Activity Use Case Scenario..... | 12 |
| 4.0 HIGH LEVEL DIAGRAM..... | 13 |
| 4.1 Product Activity..... | 13 |
| 5.0 GLOBAL DATA DICTIONARY: DATA ATTRIBUTES FOR PRODUCT ACTIVITY..... | 14 |
| APPENDICES | 15 |
| Appendix 1: Class Diagram for Product Activity..... | 15 |
| Appendix 2: Class Diagram from Plan Common..... | 16 |
| Appendix 3: Class Diagram from Document..... | 17 |
| Appendix 4: Class Diagram from Measurement | 17 |
| Appendix 5: Class Diagram from Party Identification..... | 18 |
| Appendix 6: Class Diagram from Date and Time | 19 |
| Appendix 7: Class Diagrams from Trade Item Identification..... | 20 |
| STYLE SHEET..... | 22 |
| DESCRIPTION..... | 22 |
| HTML EXAMPLE | 22 |
| GLOBAL DATA DICTIONARY..... | 24 |
| 1.0 PRODUCT ACTIVITY CLASS DATA DESCRIPTIONS V1.3 | 24 |
| INSTANCE FILE | 32 |
| DESCRIPTION..... | 32 |
| INSTANCE FILE EXAMPLE..... | 32 |

Purpose

The purpose of this Business Message Standard is to provide the necessary information to implement this message as part of the EAN.UCC System. The information contained within this document is a direct result of the work conducted by the EAN.UCC's Plan Business Requirements Group.

The content of this document is actually a collection of material from several different sources to create a single source of information that will provide the necessary basics to understand and implement this EAN.UCC Business Message Standard. The core of this document originates from the Business Requirements Document that is created by the Business Requirements Groups to define the business needs that are to be addressed by this Message. The document then provides the technical details needed to implement the message: a report from the Global Data Dictionary, StyleSheet and Instance File.

This Business Message Standard is meant to be used in conjunction with the EAN.UCC XML Schemas that are available on the EAN and UCC websites. The implementer of these standards needs to be aware of the interrelationship amongst the XML Schemas and the importance of using only interoperable versions.

The reader will notice as they progress through this document that there are several different 'levels' of information that is presented. We begin with the business rationale for the message and then move into the technical details of how and what is needed to exchange this message. This design is deliberate to reach the broadest audience and to meet their needs. Based upon the reader's experience and intentions, specific sections of this document may be more valuable than others. This design and content of this document is based upon the direct feedback from our user community and as such, we are constantly revising and refining how and what we present.

Background

| | | |
|--|--|-----------------------------|
| EAN.UCC Business Message Standard: | Product Activity | |
| Business Requirement Group: | Plan | |
| Business Requirement Document: | Product Activity | |
| Business Requirements Group Manager: | Andrew Hearn | Uniform Code Council |
| Global Data Dictionary: | EAN.UCC Global Data Dictionary v1.3 | |
| Schemas: | EAN.UCC Schemas v1.3 | |
| Schemas have been tested on Parser(s) and Version(s): | XML Spy Version 4.4, Xerces, XSV | |

***Business Requirements Group
(BRG)***

**Business Requirements
Document For**

PRODUCT ACTIVITY

Version 0.1.2
June 30, 2003

DOCUMENT HISTORY

| | |
|----------------------------|---------------|
| Document Number: | XXX-YYY-NNN |
| Document Version: | 0.1.2 |
| Document Issue Date | June 30, 2003 |

Document Summary

| | |
|-----------------------|---|
| Document Title | EAN•UCC – Business Requirements Document For Product Activity |
| Owner | Andrew Hearn- mailto:ahearn@uc-council.org |
| Abstract | |
| Status | ITRG Approved |

Document Change History Log

| Date of Change | Ver | Reason for Change | Summary of Change | CCR # |
|--------------------|-------|---|---|-------|
| September 25, 2001 | 0.0.0 | Split off previous BRD for product activity and performance history | | |
| October 26, 2001 | 0.1.0 | Incorporated ITAG and EAN comments | Deleted date in footer. Revised 1.0, 1.1.2, 1.2 and added note to 5.0 | |
| March 26, 2003 | 0.1.1 | Harmonisation version 1.3 | | |
| June 30, 2003 | 0.1.2 | Incorporation of ITRG comments | Replaced class diagrams Product Activity, Plan Common, Measurement | |

Approvals

| Title | Name | Signature | Date |
|-------|------|-----------|------|
| | | | |
| | | | |

| | |
|---|----|
| 1.0 INTRODUCTION..... | 8 |
| 1.1 Overview – Product Activity..... | 8 |
| 1.2 Background..... | 9 |
| 2.0 PLAYERS AND ROLES | 11 |
| 3.0 REQUIREMENTS..... | 12 |
| 3.1 General Requirements | 12 |
| 3.2 Product Activity Use Case Scenario..... | 12 |
| 4.0 HIGH LEVEL DIAGRAM..... | 13 |
| 4.1 Product Activity..... | 13 |
| 5.0 GLOBAL DATA DICTIONARY: DATA ATTRIBUTES FOR PRODUCT ACTIVITY..... | 14 |
| APPENDICES | 15 |
| Appendix 1: Class Diagram for Product Activity..... | 15 |
| Appendix 2: Class Diagram from Plan Common..... | 16 |
| Appendix 3: Class Diagram from Document..... | 17 |
| Appendix 4: Class Diagram from Measurement | 17 |
| Appendix 5: Class Diagram from Party Identification..... | 18 |
| Appendix 6: Class Diagram from Date and Time | 19 |
| Appendix 7: Class Diagrams from Trade Item Identification..... | 20 |

1.0 Introduction

Collaborative Planning Forecasting and Replenishment (CPFR®) is a well documented nine step process developed and maintained by the Voluntary Interindustry Commerce Standards Association (VICS) for use by trading partners.

Within the CPFR® process, product activity is one type of historical data that a pair of CPFR® trading partners (a buyer and a seller) can share. Product Activity represents movement of a product through a location.

1.1 Overview – Product Activity

Product activity, historical product movement through a location, is always expressed in terms of the base unit of measure for the item, so no unit of measure is specified. Types of product activity include sales (which may also be interpreted as manufacturing consumption or warehouse withdrawals, depending upon the type of buyer/seller relationship), orders, canceled orders, emergency orders, receipts, shipments and on-hand inventory. Product activity reports are collections of product activity items that indicate the quantities of product movement during the specified time intervals.

1.1.1 Purpose

The purpose of this Business Requirements Document is to document a process-to-data approach. The Unified Modeling Language (UML) is used for notation. Processes are clearly understood because of the use of formal modeling with the UML models. Agreed to models permit the application of the data elements to support the processes. The biggest benefit of this process-to-data approach is the alignment of the model to fit the business need.

CPFR® is the registered trademark of VICS, the Voluntary Interindustry Commerce Standards Association

1.1.2 Audience

The audience for this document is anyone involved in collaborative planning, forecasting and replenishment.

To better understand this business requirements document the audience should become familiar with the VICS CPFR[®] Process, the VICS CPFR[®] XML Messaging Model, June 13, 2001 and VICS Collaborative Planning Forecasting and Replenishment (CPFR[®]), Global Commerce Initiative Recommendation, June 30, 2001 as these documents provide the basis and context of the business requirements.

1.1.3 Document Organization

This document has the following organization:

- Section 1 – Provides background information for this effort
- Section 2 – Describes the players and roles that will be referred to in this document (Actors)
- Section 3 – Describes the general business requirements that have been identified
- Section 4 – UML Model Information and Examples
 - High Level Class Diagram
- Section 5 – Global Data Dictionary

1.2 Background

The Product Activity Business Requirements Document is the output of the VICS CPFR[®], GCI, the Plan BRG (Business Requirements Group) and EAN ECEG (Electronic Commerce Expert Group). It is the responsibility of the BRG's to provide the business requirements for the process of the creation and maintenance of the business and data models. The BRG's develop and maintain business process models and supporting Use Case diagrams, Class diagrams and data requirements for a specific business function in a global electronic commerce environment. The BRG's review and resolve change requests. The BRG's provide guidance for the technical application of new business processes and changes to existing business processes. Currently, BRG's exist for the following business processes: Align Data, Plan, Order, Despatch, Pay, After Sales Services, Asset Management, Manufacturing and Point Of Service. EAN (ECEG) covers similar functionality, through a pool of experts that liaises with the local users, ensuring the effective gathering of the business requirements from its network of national Member Organisations world-wide.

The following are the main documents used in developing this work.

EAN•UCC Global Business Model (Process and Data), “The Trade of Goods and Services”, October 1999

VICS CPFR® XML Messaging Model, June 13, 2001

VICS Collaborative Planning Forecasting and Replenishment (CPFR®), Global Commerce Initiative Recommendation, June 30, 2001.

Acknowledgement is also due to the work going on in the XML environment.

ebXML/SOAP

eCo Framework (Common Business Library)

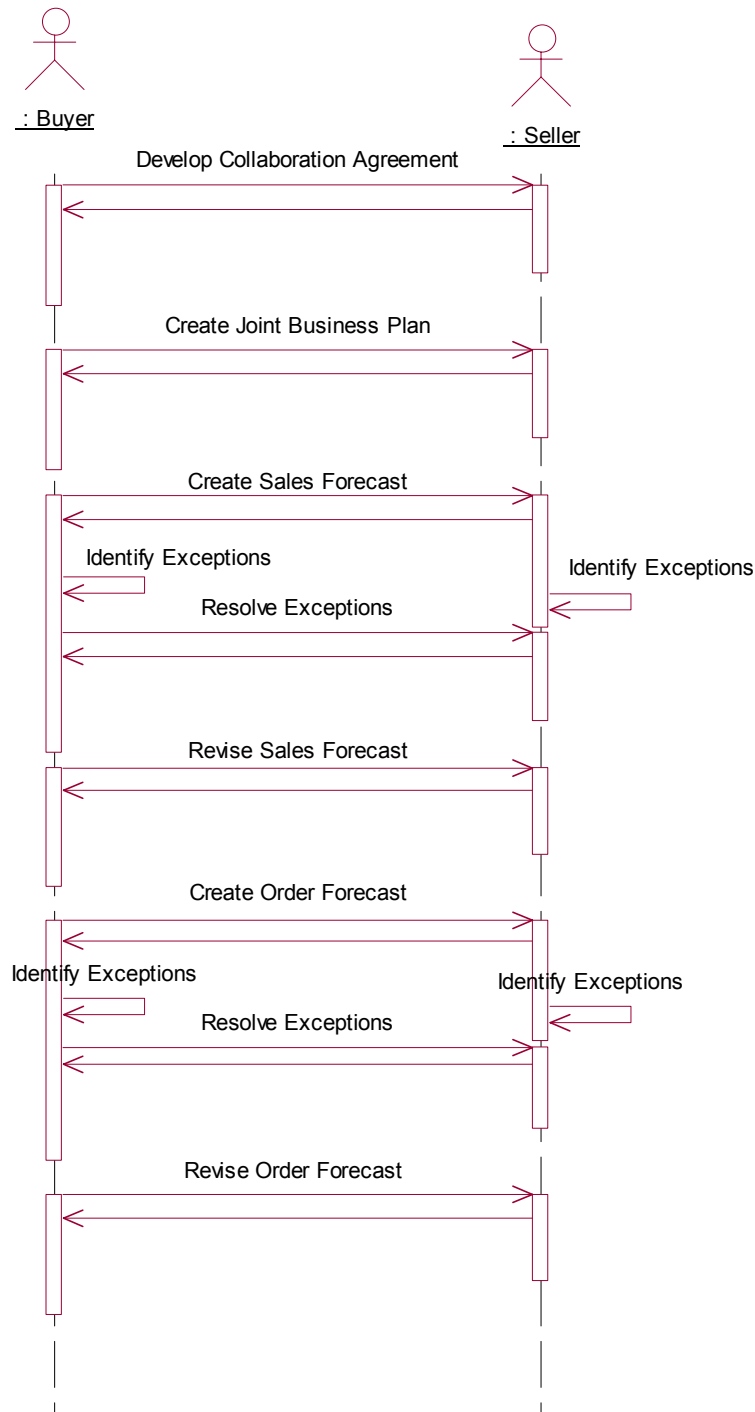
RosettaNet

UN/CEFACT EWG

W3C

2.0 Players and Roles

There is one pair of trading partners involved in Product Activity, a “seller” and a “buyer”. The graphic flow below pictures the overall sequence of activities. Product Activity falls within the exception activities.



3.0 Requirements

Exception criteria are rules that describe the thresholds for forecast variance, product activity, and performance history beyond which exceptions to sales forecasts and order forecasts are noted and resolved between a pair of trading partners.

3.1 General Requirements

Product Activity is used for operational exceptions.

The collaboration for these exceptions and resolution to exceptions occurs between a pair of trading partners for a single location.

3.2 Product Activity Use Case Scenario

3.2.1 Business Opportunities/Problem Statement

The objective is for a pair of trading partners to elaborate upon operational conditions and key metrics that would identify exceptions to sales and order forecasts.

3.2.2 Stakeholders: Actors

Product Activity is a two-actor system involving a collaborative effort between a buyer and a seller for a single location. The lead actor in the collaboration depends upon the scenario most appropriate to the trading partner's business situation.

3.2.3 Process Start State

The start-state for Product Activity begins with the receipt a forecast.

3.2.4 Process End State

The end-state for Product Activity occurs with the resolution of exceptions.

3.2.5 Preconditions

A collaboration agreement and joint business plan must be in place and a forecast is prepared and received by the trading partners.

3.2.6 Successful End Condition

Exceptions, when identified, are noted and resolved.

3.2.7 Failed End Condition

Operational activities and key metrics identifying exceptions to forecasts are not identified and resolved.

3.2.8 Main Process Flow

1. Both trading partners establish exception criteria
2. Both trading partners establish the value limits set by the exception criteria
3. Upon receipt of a forecast (sales or order), the appropriate trading partner retrieves exception criteria data
4. If forecast is within the value limits, no exception occurs
5. If forecast is outside the value limits, an exception is identified and processed

4.0 High Level Diagram

This section refers to the high level class diagram for Product Activity. The color coding on the diagram is as follows:

- Red indicates that the class is the root class for the diagram.
- Grey indicates that the class is outside of or external to the root class.
- Yellow indicates that the class pertains specifically to the root class.

4.1 Product Activity

The Product Activity based on agreed upon operational values serves as an exception message for either a Sales Forecast and an Order Forecast from which the resolution will create a Forecast Revision. The Product Activity classes are pictured and are listed here alphabetically. These include:

- Activity Type Code List
- Plan Document
- Product Activity
- Product Activity Data Item
- Time Series Data Item

4.1.1 Activity Type Code List

This external class originates in Plan Common and is a class that is used in more than one CPFR® Class diagram. This class identifies the activity type code list for an operational exception. The activity type code list has the following attributes:

- Canceled orders
- Emergency orders
- On hand
- Orders
- Receipts
- Sales
- Shipments

4.1.2 Plan Document

This external class originates in Plan Common and is a class that is used in more than one CPFR® class diagram. Plan Document class is the EAN•UCC System equivalent to CPFR® Message class. This class has an attribute that provides the identification of the planner, identifies the source of the data, the time period for the document and the buyer and seller.

4.1.3 Product Activity

This is the root class that links one or more product activity data items to a plan document. This class has no attributes.

4.1.4 Product Activity Data Item

This class associates a product activity to one or more product activity data items. This class has no attributes.

4.1.5 Time Series Data Item

This external class originates in Plan Common and is a class that is used in more than one CPFR® class diagram. This class links a Time period, Measurement for the quantity involved, and to Collaborative Trade Item for the required product.

5.0 Global Data Dictionary: Data Attributes for Product Activity

ProductActivity

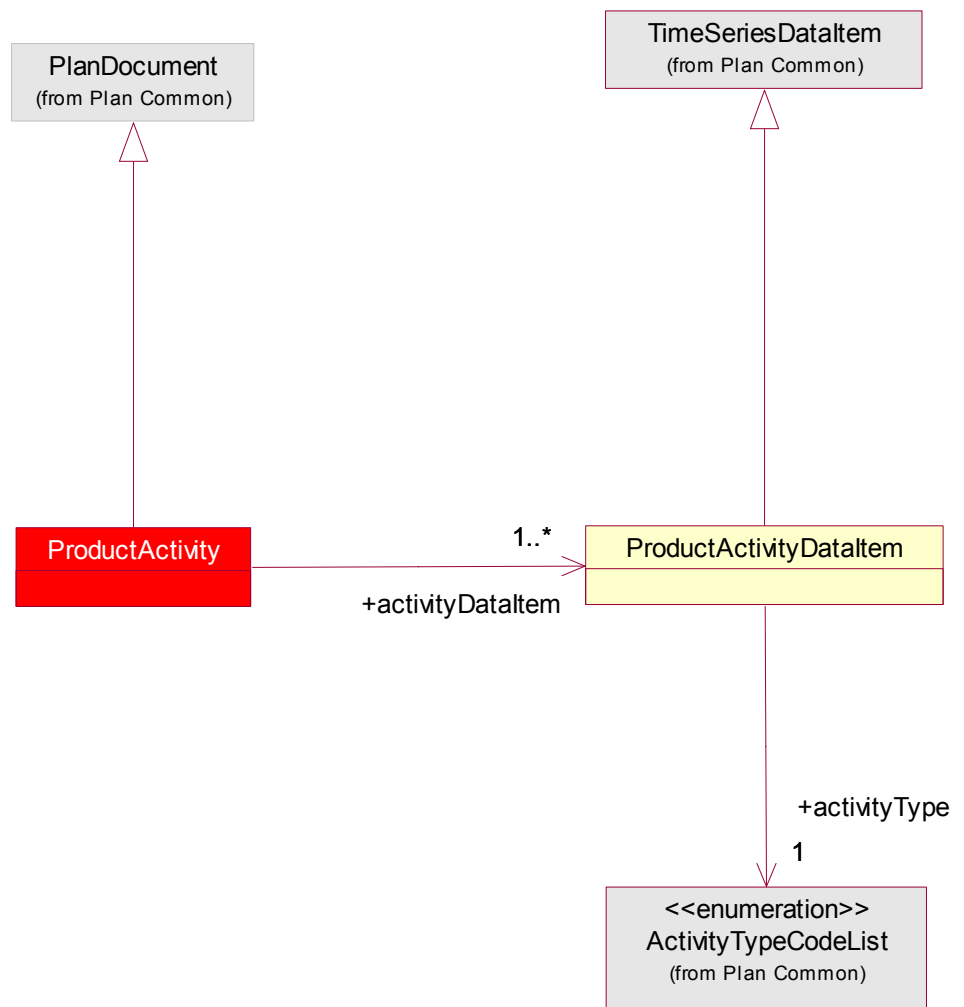
ProductActivityDataItem

Note: See Common Global Data Dictionary for all common classes/attributes.

Appendices

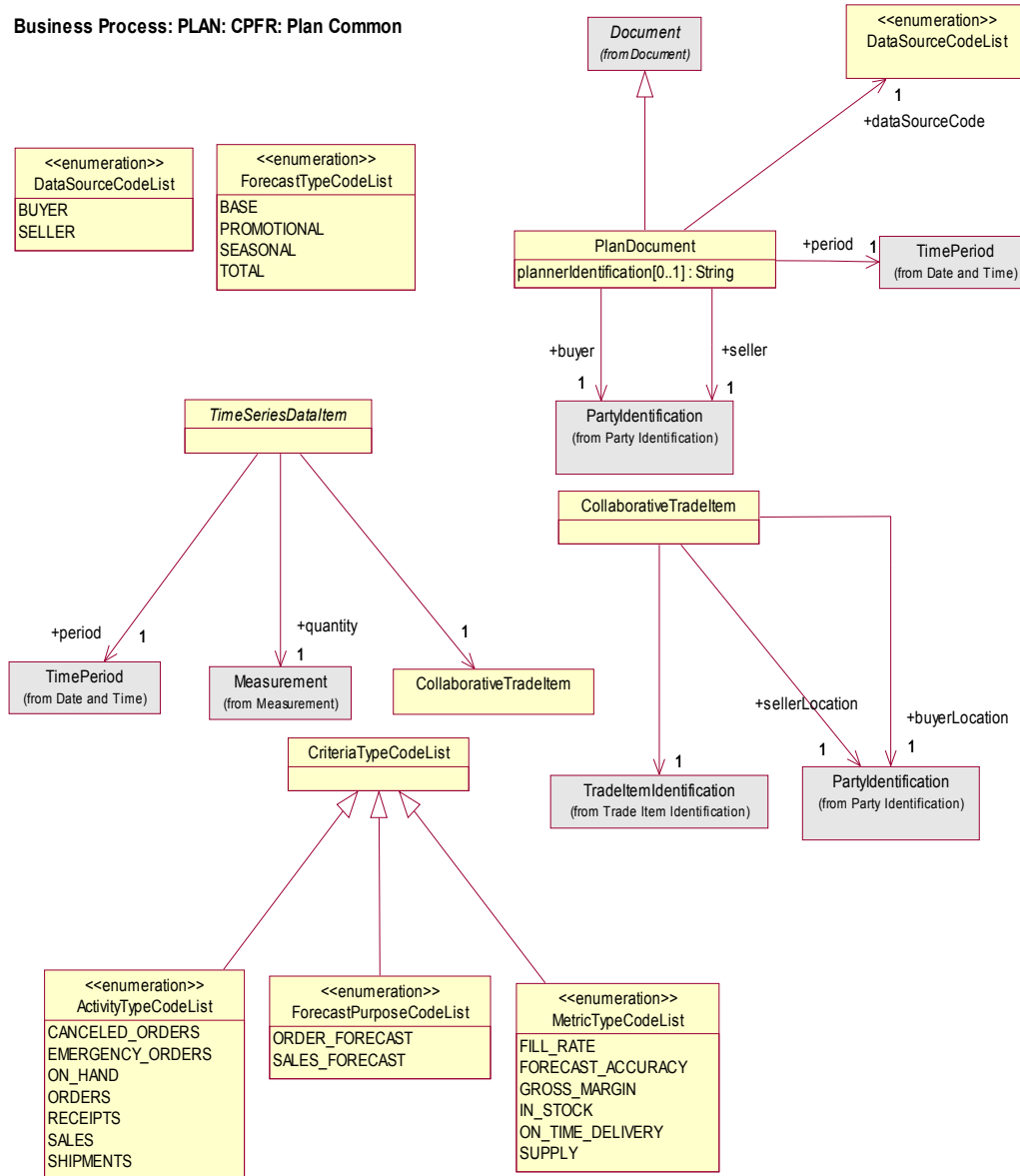
Appendix 1: Class Diagram for Product Activity

Business Process: PLAN: CPFR: Interchange: Product Activity



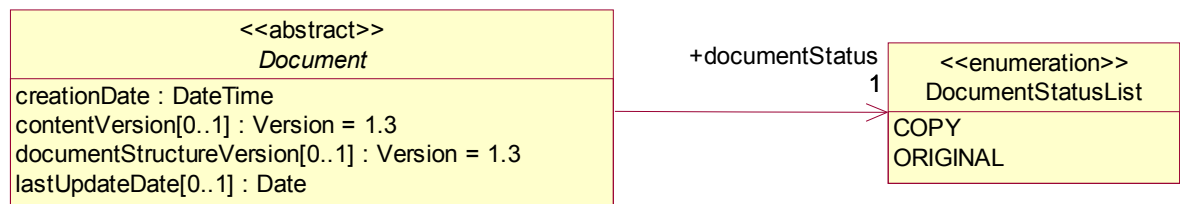
Appendix 2: Class Diagram from Plan Common

Business Process: PLAN: CPFR: Plan Common



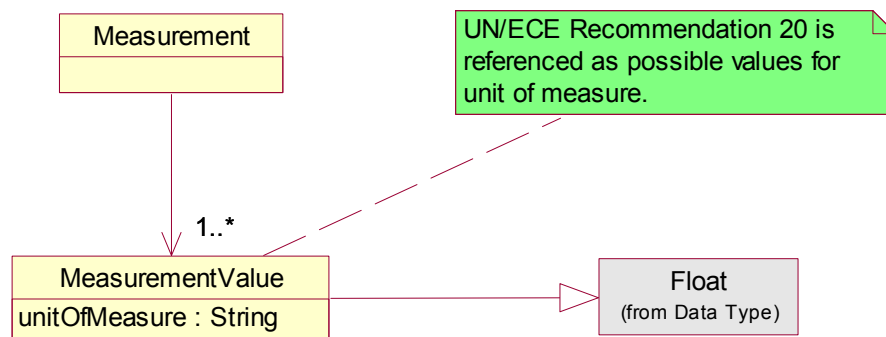
Appendix 3: Class Diagram from Document

Common Library :Common: Components: Document



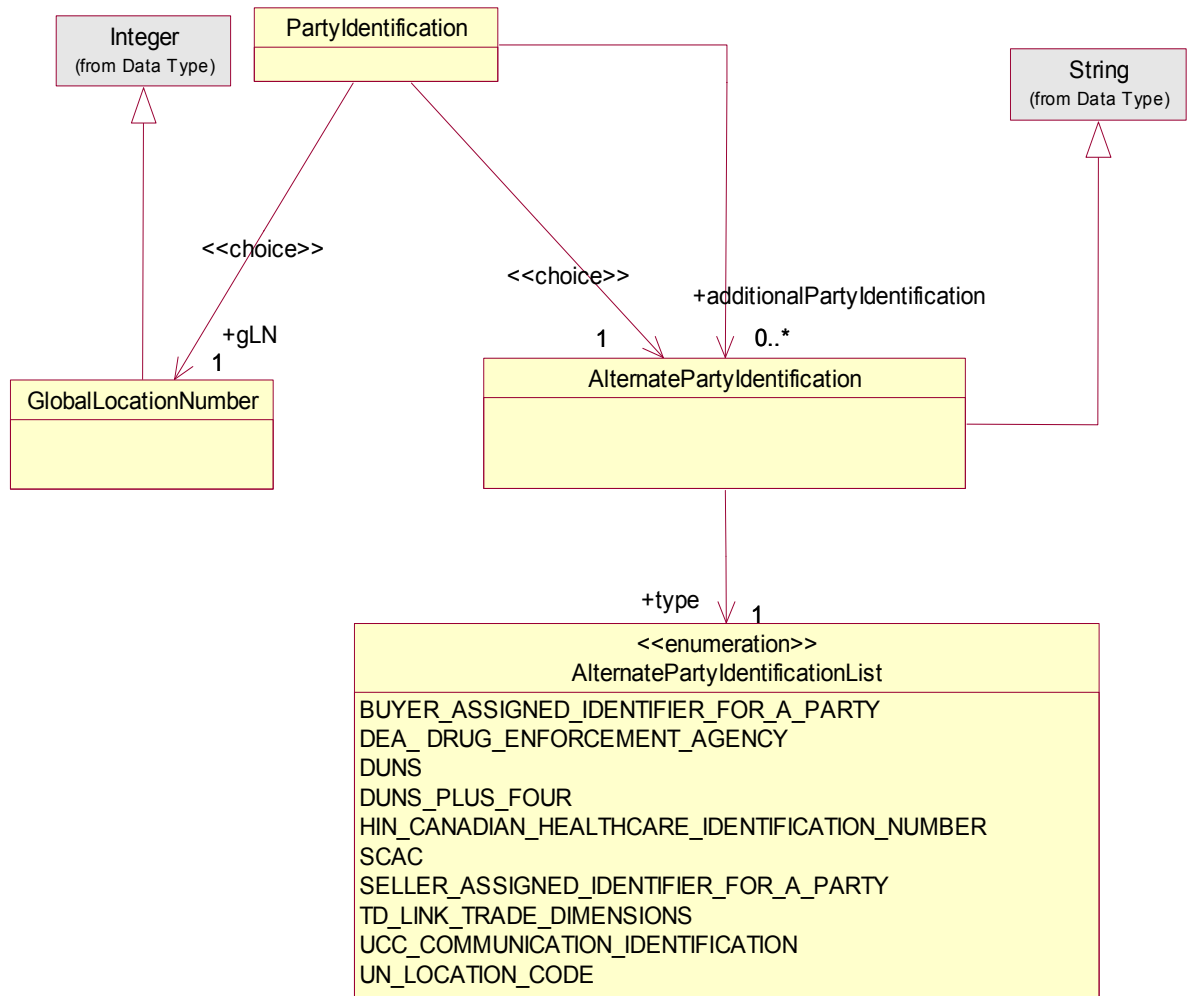
Appendix 4: Class Diagram from Measurement

Common Library: Common: Components :Measurement



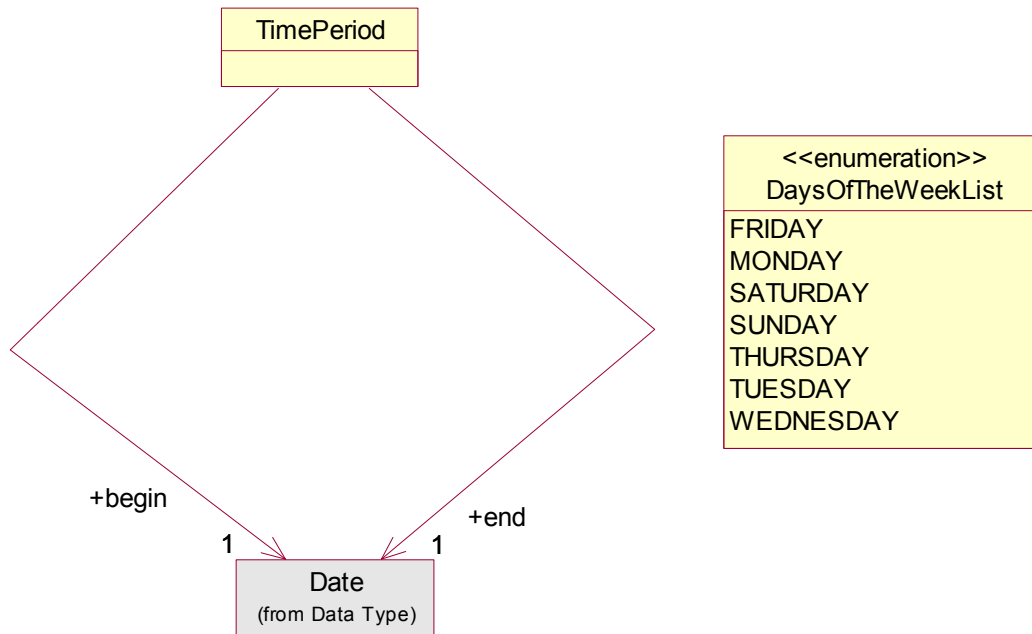
Appendix 5: Class Diagram from Party Identification

Common Library: Common: Identification: Party Identification



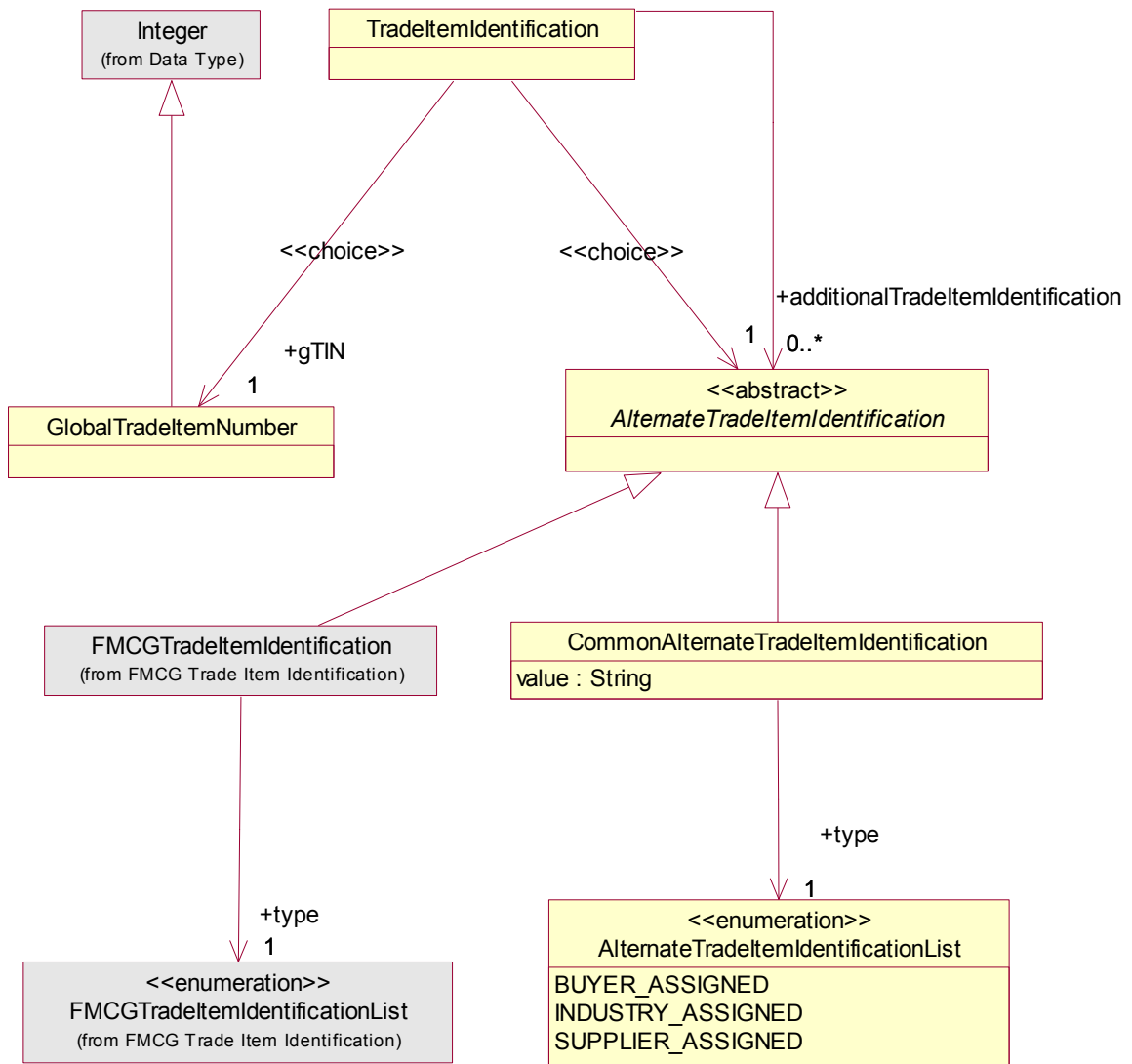
Appendix 6: Class Diagram from Date and Time

Common Library: Common: Components: Date and Time

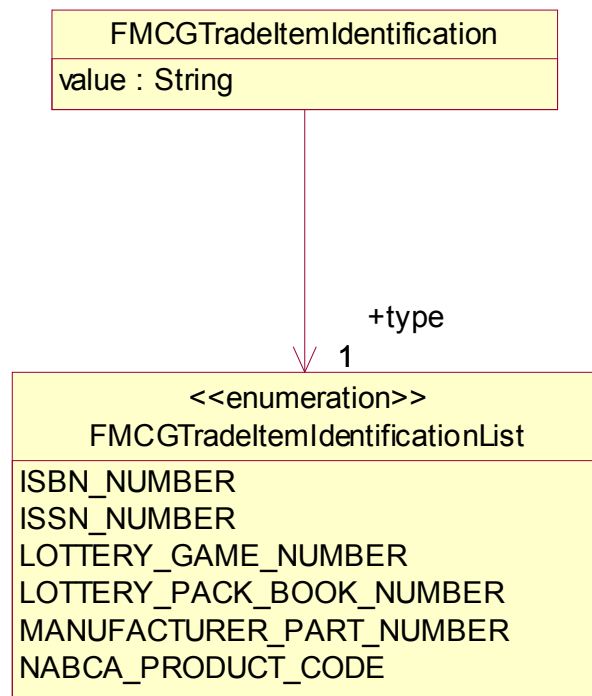
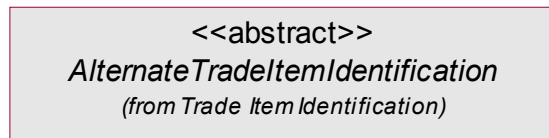


Appendix 7: Class Diagrams from Trade Item Identification

Common Library: Common: Identification: Trade Item Identification



Extension: FMCG: FMCG Trade Item Identification



Style Sheet

Description

This HTML has been created using a Style Sheet that is a visual representation of the data. It is not an actual Style Sheet, but an example of what a Style Sheet may look like.

HTML Example

Message MSG-123

Creation Date

January 10, 2004 12:00:01

Representing Party

0012345000065

Msg From Party

0012345000359

Msg To Party

0012345000058

Transaction

Creator ID = MSG-123-20040110

Content Owner = 0012345000359

Command ADD

Creator ID = MSG-123-20040110

Content Owner = 0012345000359

Product Activity Document

Document Information

Creation Date

January 10, 2004 12:00:01

Content Version

1.3

Status

ORIGINAL

Last Update Date

January 10, 2004

Doc Structure Version

1.3

Product Activity Information

| | | | |
|---------------------|----------------|--------------------|----------------|
| Planner ID | UCC | Data Source | BUYER |
| Seller | 0012345000058 | Buyer | 0012345000359 |
| Period Begin | March 28, 2004 | Period End | March 29, 2004 |

Product Activity Data Items

Activity Data Item 1

| | | | |
|-----------------------|---|------------------------|----------------|
| Trade Item ID | [fmcg] Alternate Item Identification (NABCA_PRODUCT_CODE) | | |
| Buyer Location | 0012345000359 | Seller Location | 0012345000058 |
| Period Begin | March 28, 2004 | Period End | March 28, 2004 |
| Quantity | 20 lbs | | |
| Activity Type | SALES | | |

GLOBAL DATA DICTIONARY

1.0 Product Activity Class Data Descriptions v1.3

| Class Name | Role Name | Enumerated Value for List Class | Attribute Name | Description | Min/Max Size | M/O | EAN.UCC XSD |
|------------------------------|-------------------------------|---------------------------------|----------------|---|--------------|-----|----------------------|
| ActivityTypeCodeList | activityType | | | TimeSeriesDataItem is an external class that originates in Plan Common. This class identifies the Activity Type Code for an operational exception. The Activity Type Code includes the following Business Attributes: Cancelled orders, Emergency Orders, OnHand, Orders, Receipts, Sales, Shipments. | | M | PlanComponentLibrary |
| | | CANCELED_ORDERS | | Canceled Orders | | | |
| | | EMERGENCY_ORDERS | | Emergency Orders | | | |
| | | ON_HAND | | On hand | | | |
| | | ORDERS | | Orders | | | |
| | | RECEIPTS | | Receipts | | | |
| | | SALES | | Sales | | | |
| | | SHIPMENTS | | Shipments | | | |
| AlternatePartyIdentification | additionalPartyIdentification | | | Only one primary party identifier is used for each party. If an alternate identifier, other than GLN is used, there is no guarantee of data integrity across the process. It is the responsibility of the company electing the choice to ensure data integrity. | | O | Identification |

| AlternatePartyIdentificationList | type | | | Only one primary party identifier is used for each party. If an alternate identifier, other than GLN is used, there is no guarantee of data integrity across the process. It is the responsibility of the company electing the choice to ensure data integrity. | M | Identification |
|----------------------------------|------|---|--|---|---|----------------|
| | | BUYER_ASSIGNED_IDENTIFIER_FOR_A_PARTY | | This optional code will be used for cross-reference on a one-to-one relationship. | | |
| | | DEA_DRUG_ENFORCEMENT_AGENCY | | This optional code will be used for cross-reference on a one-to-one relationship. | | |
| | | DUNS | | This optional code will be used for cross-reference on a one-to-one relationship. | | |
| | | DUNS_PLUS_FOUR | | This optional code will be used for cross-reference on a one-to-one relationship. | | |
| | | HIN_CANADIAN_HEALTHCARE_IDENTIFICATION_NUMBER | | This optional code will be used for cross-reference on a one-to-one relationship. | | |
| | | SCAC | | This optional code will be used for cross-reference on a one-to-one relationship. | | |
| | | SELLER_ASSIGNED_IDENTIFIER_FOR_A_PARTY | | This optional code will be used for cross-reference on a one-to-one relationship. | | |
| | | TD_LINK_TRADE_DIMENSIONS | | This optional code will be used for cross-reference on a one-to-one relationship. | | |

| | | | | | | | |
|--|-----------------------------------|----------------------------------|-------|--|------|---|----------------|
| | | UCC_COMMUNICATION_IDENTIFICATION | | This optional code will be used for cross-reference on a one-to-one relationship. | | | |
| | | UN_LOCATION_CODE | | This optional code will be used for cross-reference on a one-to-one relationship. | | | |
| AlternateTradeItemIdentification | additionalTradeItemIdentification | | | AlternateTradeItemIdentification is an abstract class from Item Identification used to identify a value for item identification other than GTIN. | | O | Identification |
| AlternateTradeItemIdentificationList | | | | Contains an enumeration list from the CommonAlternateTradeItemIdentificationClass. | | M | Identification |
| | | BUYER_ASSIGNED | | This optional code will be used to cross-reference the Vendors internal trade item number to the GTIN in a one-to-one relationship. | | | |
| | | INDUSTRY_ASSIGNED | | This optional code will be used to cross-reference the Vendors internal trade item number to the GTIN in a one-to-one relationship. | | | |
| | | SELLER_ASSIGNED | | This optional code will be used to cross-reference the Vendors internal trade item number to the GTIN in a one-to-one relationship. | | | |
| CommonAlternateTradeItemIdentification | | | | Industry neutral Trade Item Identification. | | M | Identification |
| | | | value | The default value to be used for the field when that field is not present in the file. | 1/80 | M | |

| | | | | | | |
|---------------------------------|----------------|---------------------|--------------------------|--|---|----------------------|
| DataSourceCodeList | dataSourceCode | | | DataSourceCode is an external class that originates in Plan Common. The data source code list has the following attributes: ·Buyer ·Seller | M | PlanComponentLibrary |
| | | BUYER | | Buyer | | |
| | | SELLER | | Seller | | |
| Date | begin | | | | M | |
| | end | | | | | |
| Document | | | | This class is used to specify the basic information about the context of the message. | M | Components |
| | | | creationDate | DateTime | | |
| | | | contentVersion | Version = 1.3 | | |
| | | | documentStructureVersion | Version =1.3 | | |
| | | | lastUpdateDate | Date | | |
| DocumentStatusList | documentStatus | | | Indicates if the document is a copy or an original. | M | Components |
| | | COPY | | A copy of the original document | | |
| | | ORIGINAL | | The original document | | |
| FMCGTradeItemIdentification | | | | | O | FMCGIdentification |
| | | | value | The default value to be used for the field when that field is not present in the file. | M | |
| FMCGTradeItemIdentificationList | type | | | | M | FMCGIdentification |
| | | ISBN_NUMBER | | ISBN Number | | |
| | | ISSN_NUMBER | | ISSN Number | | |
| | | LOTTERY_GAME_NUMBER | | Lottery Game Number | | |

| | | | | | | | |
|-----------------------|----------|--------------------------|---------------|--|------|---|----------------|
| | | LOTTERY_PACK_BOOK_NUMBER | | Lottery Pack Book Number | | | |
| | | MANUFACTURER_PART_NUMBER | | Manufacturer Part Number | | | |
| | | NABCA_PRODUCT_CODE | | NABCA Product Code | | | |
| GlobalLocationNumber | gLN | | | The Global Location Number (GLN) is a structured Identification of a physical location, legal or functional entity within an enterprise. The GLN is the recommended primary party identifier. | | O | Identification |
| GlobalTradeItemNumber | gTIN | | | A particular Global trade item Number, a numerical value used to uniquely identify a trade item. A Trade item is any trade item (product or service) upon which there is a need to retrieve pre-defined information. | | O | Identification |
| Measurement | quantity | | | This external class originates in Measurement and is a class that is used in more than one class diagram. The measurement class provides the value for the actual impact. | | M | Components |
| MeasurementValue | | | | This external class originates in Measurement and is a class that is used in more than one CPFR class diagram. This class has an attribute unit of measure and allows for the value of the measurement. | | M | Components |
| | | | unitOfMeasure | UN/ECE Recommendation 20. Unit of measure code. | 1/15 | M | |

| | | | | | | | |
|---------------------|----------------|--|--|--|--|---|----------------|
| PartyIdentification | buyer | | | There is a choice of selecting either a GLN (Recommended) or Alternate Party Identification as your primary party identification. Additionally, optional party identification, which cannot be GLN may be included. For example you may select one GLN as your one GLN as your primary party identification with additional party identification (ie. GLN cross referenced to DUNS or you may select an Alternate as your primary party identification with reference to additional party identification alternates). If you elect to use a DUNS number as your primary party identification, you may cross-reference this to another alternate number such as a buyer assigned customer number. However, again GLN may not be used as the additional alternate. | | M | Identification |
| | buyerLocation | | | | | O | |
| | seller | | | | | M | |
| | sellerLocation | | | | | O | |

| | | | | | | | |
|-------------------------|-------------------|--|-----------------------|---|------|---|----------------------|
| PlanDocument | | | | This external class originates in Plan Common and is a class that is used in more than one CPFR class diagram. Plan Document class is the EAN-UCC System equivalent to CPFR Message class. This class has an attribute that provides the identification of the planner, identifies the source of the data, the time period for the document and the buyer and seller. | | M | PlanComponentLibrary |
| | | | plannerIdentification | Generic field to denote the specific planner involved with planning this event. This can be either Seller assigned or Buyer assigned. | 1/80 | O | |
| ProductActivity | | | | This is the root class for bulk data for product activity. | | M | ProductActivity |
| ProductActivityDataItem | activityTradeItem | | | This class associates a product activity to one or more product activity trade items. | | M | ProductActivity |
| TimePeriod | period | | | This external class originates in Date and Time and is a class that is used in more than one class diagram. This class identifies the effective dates. | | M | Components |
| TimeSeriesDataTradeItem | | | | This external class originates in Plan Common and is a class that is used in more than one CPFR class diagram. This class links a time period to measurement for the quantity involved and to collaborative item for the required product. | | M | PlanComponentLibrary |

| | | | | | | |
|-------------------------|--|--|--|--|---|----------------|
| TradeItemIdentification | | | A unique identification of the trade item or service. It is recommended to use the Global Trade Item Number (GTIN) as the primary trade item identification. | | M | Identification |
|-------------------------|--|--|--|--|---|----------------|

Instance File

Description

The Instance File is an example of what the schema may look like when it includes live data. This can be used as comparison to a completed schema and can serve as a point of reference for development.

Instance File Example

```
<?xml version="1.0" encoding="UTF-8"?>
<?xml-stylesheet type="text/xsl" href="../../4_XSL/Main.xsl"?>
<!-- This is a sample file-->
<eanucc:envelope xmlns:xsi="http://www.w3.org/2001/XMLSchema-instance"
  xmlns:eanucc="http://www.ean-ucc.org/schemas/1.3/eanucc" xmlns:fmcg="http://www.ean-ucc.org/schemas/1.3/fmcg"
  xsi:schemaLocation="http://www.ean-ucc.org/schemas/1.3/eanucc
  ../2_XSD_PROXY/ProductActivityProxy.xsd" communicationVersion="1.3">
  <messageHeader creationDate="2004-01-10T12:00:01">
    <userId>163485</userId>
    <password>MJK1635K</password>
    <messageIdentifier>MSG-123</messageIdentifier>
    <to>
      <gln>0012345000058</gln>
    </to>
    <from>
      <gln>0012345000359</gln>
    </from>
    <representingParty>
      <gln>0012345000065</gln>
    </representingParty>
  </messageHeader>
  <body>
    <eanucc:transaction>
      <entityIdentification>
        <uniqueCreatorIdentification> MSG-123-20040110</uniqueCreatorIdentification>
        <contentOwner>
          <gln>0012345000359</gln>
        </contentOwner>
      </entityIdentification>
      <command>
        <eanucc:documentCommand>
          <documentCommandHeader type="ADD">
            <entityIdentification>
              <uniqueCreatorIdentification> MSG-123-20040110</uniqueCreatorIdentification>
              <contentOwner>
                <gln>0012345000359</gln>
              </contentOwner>
            </entityIdentification>
          </documentCommandHeader>
          <documentCommandOperand>
```

```

        <eanucc:productActivity creationDate="2004-01-10T12:00:01"
documentStatus="ORIGINAL" contentVersion="1.3" documentStructureVersion="1.3"
lastUpdateDate="2004-01-10">
            <plannerIdentification>UCC</plannerIdentification>
            <dataSourceCode>BUYER</dataSourceCode>
            <seller>
                <gln>0012345000058</gln>
            </seller>
            <buyer>
                <gln>0012345000359</gln>
            </buyer>
            <period begin="2004-03-28" end="2004-03-29"/>
            <activityDataItem>
                <collaborativeTradeItem>
                    <tradeItemIdentification>
                        <alternateTradeItemIdentification
xsi:type="fmcg:TradeItemIdentificationType" type="NABCA_PRODUCT_CODE">
                            <fmcg:value>Alternate Item Identification</fmcg:value>
                        </alternateTradeItemIdentification>
                    </tradeItemIdentification>
                    <buyerLocation>
                        <gln>0012345000359</gln>
                    </buyerLocation>
                    <sellerLocation>
                        <gln>0012345000058</gln>
                    </sellerLocation>
                </collaborativeTradeItem>
                <period begin="2004-03-28" end="2004-03-28"/>
                <quantity>
                    <measurementValue unitOfMeasure="lbs">20</measurementValue>
                </quantity>
                <activityType>SALES</activityType>
            </activityDataItem>
        </eanucc:productActivity>
    </documentCommandOperand>
</eanucc:documentCommand>
</command>
</eanucc:transaction>
</body>
</eanucc:envelope>

```