

EAN.UCC XML
Business Message
Standard For
Exception Notification

Version 1.3

July 2003



TABLE OF CONTENTS

| | |
|--|-----------|
| PURPOSE | 3 |
| BACKGROUND | 4 |
| BUSINESS REQUIREMENTS DOCUMENT FOR EXCEPTION NOTIFICATION | 5 |
| 1.0 INTRODUCTION..... | 8 |
| 1.1 Overview – Exception Notification..... | 8 |
| 1.2 Background..... | 10 |
| 2.0 PLAYERS AND ROLES | 11 |
| 3.0 REQUIREMENTS..... | 11 |
| 3.1 General Requirements | 11 |
| 3.2 Exception Notification Use Case Scenario..... | 11 |
| 4.0 HIGH LEVEL DIAGRAM..... | 12 |
| 4.1 Exception Notification..... | 12 |
| 5.0 GLOBAL DATA DICTIONARY: DATA ATTRIBUTES FOR EXCEPTION NOTIFICATION | 15 |
| APPENDICES | 16 |
| Appendix 1: Class Diagram for Exception Notification..... | 16 |
| Appendix 2: Class Diagram from Plan Common..... | 17 |
| Appendix 3: Class Diagram from Document..... | 18 |
| Appendix 4: Class Diagram from Measurement | 18 |
| Appendix 5: Class Diagram from Collaboration Common | 19 |
| Appendix 6: Class Diagram from Party Identification..... | 19 |
| Appendix 7: Class Diagram from Date and Time | 20 |
| Appendix 8: Class Diagrams from Trade Item Identification..... | 21 |
| STYLE SHEET..... | 23 |
| DESCRIPTION..... | 23 |
| HTML EXAMPLE | 23 |
| GLOBAL DATA DICTIONARY..... | 26 |
| 1.0 EXCEPTION NOTIFICATION CLASS DATA DESCRIPTIONS V1.3 | 26 |
| INSTANCE FILE | 36 |
| DESCRIPTION..... | 36 |
| INSTANCE FILE EXAMPLE..... | 36 |

Purpose

The purpose of this Business Message Standard is to provide the necessary information to implement this message as part of the EAN.UCC System. The information contained within this document is a direct result of the work conducted by the EAN.UCC's Plan Business Requirements Group.

The content of this document is actually a collection of material from several different sources to create a single source of information that will provide the necessary basics to understand and implement this EAN.UCC Business Message Standard. The core of this document originates from the Business Requirements Document that is created by the Business Requirements Groups to define the business needs that are to be addressed by this Message. The document then provides the technical details needed to implement the message: a report from the Global Data Dictionary, StyleSheet and Instance File.

This Business Message Standard is meant to be used in conjunction with the EAN.UCC XML Schemas that are available on the EAN and UCC websites. The implementer of these standards needs to be aware of the interrelationship amongst the XML Schemas and the importance of using only interoperable versions.

The reader will notice as they progress through this document that there are several different 'levels' of information that is presented. We begin with the business rationale for the message and then move into the technical details of how and what is needed to exchange this message. This design is deliberate to reach the broadest audience and to meet their needs. Based upon the reader's experience and intentions, specific sections of this document may be more valuable than others. This design and content of this document is based upon the direct feedback from our user community and as such, we are constantly revising and refining how and what we present.

Background

| | | |
|--|--|-----------------------------|
| EAN.UCC Business Message Standard: | Exception Notification | |
| Business Requirement Group: | Plan | |
| Business Requirement Document: | Exception Notification | |
| Business Requirements Group Manager: | Andrew Hearn | Uniform Code Council |
| Global Data Dictionary: | EAN.UCC Global Data Dictionary v1.3 | |
| Schemas: | EAN.UCC Schemas v1.3 | |
| Schemas have been tested on Parser(s) and Version(s): | XML Spy Version 4.4, Xerces, XSV | |

***Business Requirements Group
(BRG)***

**Business Requirements
Document For**

EXCEPTION NOTIFICATION

Version 1.3.3
June 30, 2003

DOCUMENT HISTORY

| | |
|----------------------------|---------------|
| Document Number: | XXX-YYY-NNN |
| Document Version: | 1.3.3 |
| Document Issue Date | June 30, 2003 |

Document Summary

| | |
|-----------------------|---|
| Document Title | EAN•UCC – Business Requirements Document For Exception Notification |
| Owner | Andrew Hearn ahearn@uc-council.org |
| Abstract | |
| Status | ITRG Approved |

Document Change History Log

| Date of Change | Ver | Reason for Change | Summary of Change | CCR # |
|-----------------------|------------|---|---|--------------|
| August 29, 2001 | 1.1.0 | Updated as integrated into the EAN.UCC system | | |
| September 13, 2001 | 1.2.0 | Incorporated comment | | |
| September 25, 2001 | 1.2.1 | Incorporate comments | Editorial comments and class diagram replacement | |
| October 26, 2001 | 1.3.1 | Incorporate ITAG and EAN comments | Deleted date in footer. Revised 1.0, 1.1.2, 1.2, 4.1.9 and 4.1.10 | |
| March 28, 2003 | 1.3.2 | Harmonisation version 1.3 | | |
| June 30, 2003 | 1.3.3. | Incorporation of ITRG comments | Replaced class diagrams Exception Notification, Plan Common, Measurement and add Collaboration Common | |

Approvals

| Title | Name | Signature | Date |
|--------------|-------------|------------------|-------------|
| | | | |
| | | | |

| | |
|--|----|
| 1.0 INTRODUCTION..... | 8 |
| 1.1 Overview – Exception Notification..... | 8 |
| 1.2 Background..... | 10 |
| 2.0 PLAYERS AND ROLES | 11 |
| 3.0 REQUIREMENTS..... | 11 |
| 3.1 General Requirements | 11 |
| 3.2 Exception Notification Use Case Scenario..... | 11 |
| 4.0 HIGH LEVEL DIAGRAM..... | 12 |
| 4.1 Exception Notification..... | 12 |
| 5.0 GLOBAL DATA DICTIONARY: DATA ATTRIBUTES FOR EXCEPTION NOTIFICATION | 15 |
| APPENDICES | 16 |
| Appendix 1: Class Diagram for Exception Notification | 16 |
| Appendix 2: Class Diagram from Plan Common..... | 17 |
| Appendix 3: Class Diagram from Document..... | 18 |
| Appendix 4: Class Diagram from Measurement | 18 |
| Appendix 5: Class Diagram from Collaboration Common | 19 |
| Appendix 6: Class Diagram from Party Identification..... | 19 |
| Appendix 7: Class Diagram from Date and Time | 20 |
| Appendix 8: Class Diagrams from Trade Item Identification..... | 21 |

1.0 Introduction

Collaborative Planning Forecasting and Replenishment (CPFR®) is a well documented nine step process developed and maintained by the Voluntary Interindustry Commerce Standards Association (VICS) for use by trading partners.

In the CPFR® process an exception notification is an indication of a variance from trading partner guidelines for changes in a forecast, differences between partner forecasts, or key performance metrics (forecast error, overstock, etc.).

1.1 Overview – Exception Notification

There are several types of exceptions, but all types describe a variance of a data item from an expected value during a particular time interval. There are:

- Operational Exceptions to alert users to a variance from expected product activity data values, such as a surge in emergency orders, an overstock condition, or reduced shipment levels
- Metric Exceptions to identify variances in key performance metrics such as forecast accuracy and fill rate from their expected values in a particular time period.
- Forecast Data Item Exceptions. There are two kinds within this type.
 - Forecast Accuracy Exceptions to compare a forecasted item with the actual value observed.
(Example: a sales forecast would be compared to point-of-sale data for the same period, and an exception is triggered if the numbers vary by more than the forecast item exception criterion threshold).
 - Forecast Comparison Exceptions to compare two forecast streams.
(Examples: either the buyer's forecast to the seller's or two generations of a forecast produced by the same trading partner).

CPFR® is the registered trademark of VICS, the Voluntary Interindustry Commerce Standards Association

1.1.1 Purpose

The purpose of this Business Requirements Document is to document a process-to-data approach. The Unified Modeling Language (UML) is used for notation. Processes are clearly understood because of the use of formal modeling with the UML models. Agreed to models permit the application of the data elements to support the processes. The biggest benefit of this process-to-data approach is the alignment of the model to fit the business need.

1.1.2 Audience

The audience for this document is anyone involved in collaborative planning, forecasting and replenishment.

To better understand this business requirements document the audience should become familiar with the VICS CPFR[®] Process, the VICS CPFR[®] XML Messaging Model, June 13, 2001 and VICS Collaborative Planning Forecasting and Replenishment (CPFR[®]), Global Commerce Initiative Recommendation, June 30, 2001 as these documents provide the basis and context of the business requirements.

1.1.3 Document Organization

This document has the following organization:

- Section 1 – Provides background information for this effort
- Section 2 – Describes the players and roles that will be referred to in this document (Actors)
- Section 3 – Describes the general business requirements that have been identified
- Section 4 – UML Model Information and Examples
 - High Level Class Diagram
- Section 5 – Global Data Dictionary

1.2 Background

The Exception Notification Business Requirements Document is the output of the VICS CPFR[®], GCI, the Plan BRG (Business Requirements Group) and EAN ECEG (Electronic Commerce Expert Group). It is the responsibility of the BRG's to provide the business requirements for the process of the creation and maintenance of the business and data models. The BRG's develop and maintain business process models and supporting Use Case diagrams, Class diagrams and data requirements for a specific business function in a global electronic commerce environment. The BRG's review and resolve change requests. The BRG's provide guidance for the technical application of new business processes and changes to existing business processes. Currently, BRG's exist for the following business processes: Align Data, Plan, Order, Despatch, Pay, After Sales Services, Asset Management, Manufacturing and Point Of Service.

EAN (ECEG) covers similar functionality, through a pool of experts that liaises with the local users, ensuring the effective gathering of the business requirements from its network of national Member Organisations world-wide.

The following are the main documents used in developing this work.

EAN•UCC Global Business Model (Process and Data) "The Trade of Goods and Services", October 1999

VICS CPFR[®] XML Messaging Model, June 13, 2001

VICS Collaborative Planning Forecasting and Replenishment (CPFR[®]), Global Commerce Initiative Recommendation, June 30, 2001

Acknowledgement is also due to the work going on in the XML environment.

ebXML/SOAP
eCo Framework (Common Business Library)
RosettaNet
UN/CEFACT EWG
W3C

2.0 Players and Roles

An Exception Notification is communicated from one trading partner to the other (buyer to seller or seller to buyer).

3.0 Requirements

The buyer and seller must engage and complete CPFR[®] Steps 1 through 6.

3.1 General Requirements

Exception notification messages shall indicate the item, location, time period, priority, observed value, and variance, along with a reference to the data stream or streams being compared.

3.2 Exception Notification Use Case Scenario

3.2.1 Business Opportunities/Problem Statement:

The objective is to notify a trading partner when a buyer or seller exception has been triggered.

3.2.2 Stakeholders: Actors

Exception Notification is a two-actor system involving a buyer and a seller.

3.2.3 Process Start State

The start-state for the Exception Notification is a variance of a data item from an expected value during a particular time interval. The variance is triggered by agreed upon buyer and seller exception criteria.

3.2.4 Process End State

The end-state of the Exception Notification is the transmission of the message.

3.2.5 Preconditions

CPFR[®] Steps 1 through 6 have been completed.

3.2.6 Successful End Condition

An Exception Notification is received by the other trading partner.

3.2.7 Failed End Condition

A variance occurred and was not triggered resulting in the trading partner not being notified of an exception.

3.2.8 Main Process Flow

1. Both trading partners have established the buyer and seller exception criteria
2. CPFR® is being practiced and data collected
3. A variance exceeding the exception criteria occurs
4. The variance to operational, metric or forecast items is identified
5. An exception notification is sent to the other trading partner

4.0 High Level Diagram

This section refers to the high level class diagram for Exception Notification. The color coding on the diagram is as follows:

- Red indicates that the class is the root class for the diagram.
- Grey indicates that the class is outside of or external to the root class.
- Yellow indicates that the class pertains specifically to the root class.

4.1 Exception Notification

The Exception Notification classes are pictured and are listed here alphabetically. These include:

- [Activity Type Code List](#)
- [Collaboration Priority Code List](#)
- [Collaborative Trade Item](#)
- [Data Source Code List](#)
- [Exception](#)
- [Exception Notification](#)
- [Exception Status Code List](#)
- [Forecast Accuracy Exception](#)
- [Forecast Comparison Exception](#)
- [Forecast Data Item Exception](#)
- [Forecast Purpose Code List](#)
- [Forecast Type Code List](#)
- [Measurement](#)
- [Metric Exception](#)
- [Metric Type Code List](#)
- [Operational Exception](#)
- [Plan Document](#)
- [Time Period](#)

4.1.1 Activity Type Code List

This external class originates in Plan Common and is a class that is used in more than one CPFR® class diagram. This class identifies the activity type code for an operational exception. The activity type code list has the following attributes:

- Canceled orders
- Emergency orders
- On hand
- Orders
- Receipts
- Sales
- Shipments

4.1.2 Collaboration Priority Code List

This external class originates in Collaboration Common. Each exception shall have an assigned collaboration priority code. This class provides the codes. The collaboration priority code list has the following attributes:

- Low
- Medium
- High

4.1.3 Collaborative Trade Item

This external class originates in Plan Common and is a class that is used in more than one CPFR® class diagram. Collaborative Trade Item identifies the product with the buyer and seller locations.

4.1.4 Data Source Code List

This external class originates in Plan Common and is a class that is used in more than one CPFR® class diagram. The source of a forecast data item exception shall be identified. This class provides the codes. The data source code list has the following attributes:

- Buyer
- Seller

4.1.5 Exception

This class links the type of exception, the collaboration priority code list, exception status code list, time period and collaborative trade item to an exception notification. This class has no attributes.

4.1.6 Exception Notification

This is the root class and links one or more exceptions to a single report and plan document. This class has no attributes.

4.1.7 Exception Status Code List

Each exception shall have a designated exception status. This class provides the codes. The Exception Status Code List has the following attributes:

- Acknowledged
- New
- Resolved
- Superseded
- Unresolvable

4.1.8 Forecast Accuracy Exception

This is one of the two kinds of forecast data item exceptions. This class identifies the exception as a forecast accuracy exception. This class has no attributes.

4.1.9 Forecast Comparison Exception

This is one of the two kinds of forecast data item exceptions. This class compares the buyer and seller data source(s) and identifies the time basis of comparison. The Forecast Comparison Exception has one attribute:

- Comparison forecast generation date time

4.1.10 Forecast Data Item Exception

This is one of the three types of exceptions. This class provides the kind of forecast exception, identifies the purpose of the forecast, the source of data and identifies the time basis for the exception. The Forecast Data Item Exception has one attribute:

- Forecast generation date time

4.1.11 Forecast Purpose Code List

This external class originates in Plan Common and is a class that is used in more than one CPFR® class diagram. Each Forecast Data Item Exception will be assigned a forecast purpose code. The Forecast Purpose Code List has the following attributes:

- Order forecast
- Sales forecast

4.1.12 Forecast Type Code List

This external class originates in Plan Common and is a class that is used in more than one CPFR® class diagram. Each Forecast Data Item Exception may be assigned a forecast type code. The Forecast Type Code List has the following attributes.

- Base
- Promotional
- Seasonal
- Total

4.1.13 Measurement

This external class originates in Measurement and is a class that is used in more than one class diagram. The measurement class provides the variance. There is multiple and numerous possible unit of measures. The EAN.UCC system refers to the UN/Cefact's UN/ECE Recommendation 20 list for the possible unit of measure. The unit of measure is not broken down into categories of UOM such as "Time UOM, Weight UOM, Dimensional UOM, or Net Content UOM". It's a list of all the possible units of measure.

4.1.14 Metric Exception

This is one of the three types of exceptions. This class links the metric type code list to the exception. This class has no attributes.

4.1.15 Metric Type Code List

This external class originates in Plan Common and is a class that is used in more than one CPFR® class diagram. This class identifies the metric type code. The metric type code list has the following attributes:

- Forecast accuracy
- In stock
- Fill rate
- On time delivery
- Supply
- Gross margin

4.1.16 Operational Exception

This is one of the three types of exceptions. This class links the activity type code list to the exception. This class has no attributes.

4.1.17 Plan Document

This external class originates in Plan Common and is a class that is used in more than one CPFR® class diagram. Plan Document class is the EAN•UCC System equivalent to CPFR® Message class. This class has an attribute that provides the identification of the planner, identifies the source of the data, the time period for the document and the buyer and seller.

4.1.18 Time Period

This external class originates in Date and Time and is a class that is used in more than one class diagram. This class identifies the effective dates.

5.0 Global Data Dictionary: Data Attributes for Exception Notification

Exception

ExceptionStatusCodeList

ACKNOWLEDGED: Exception acknowledged.

NEW: New exception.

RESOLVED: Exception resolved.

SUPERSEDED: Exception superseded.

UNRESOLVABLE: Exception unresolvable

ForecastAccuracyException

ForecastComparisonException

comparisonForecastGenerationDateTime: The date and time that the comparison forecast was generated, for identification purposes.

ForecastDataItemException

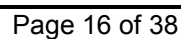
forecastGenerationDateTime: Date and time that the forecast was generated/created, for identification purposes.

MetricException

OperationalException

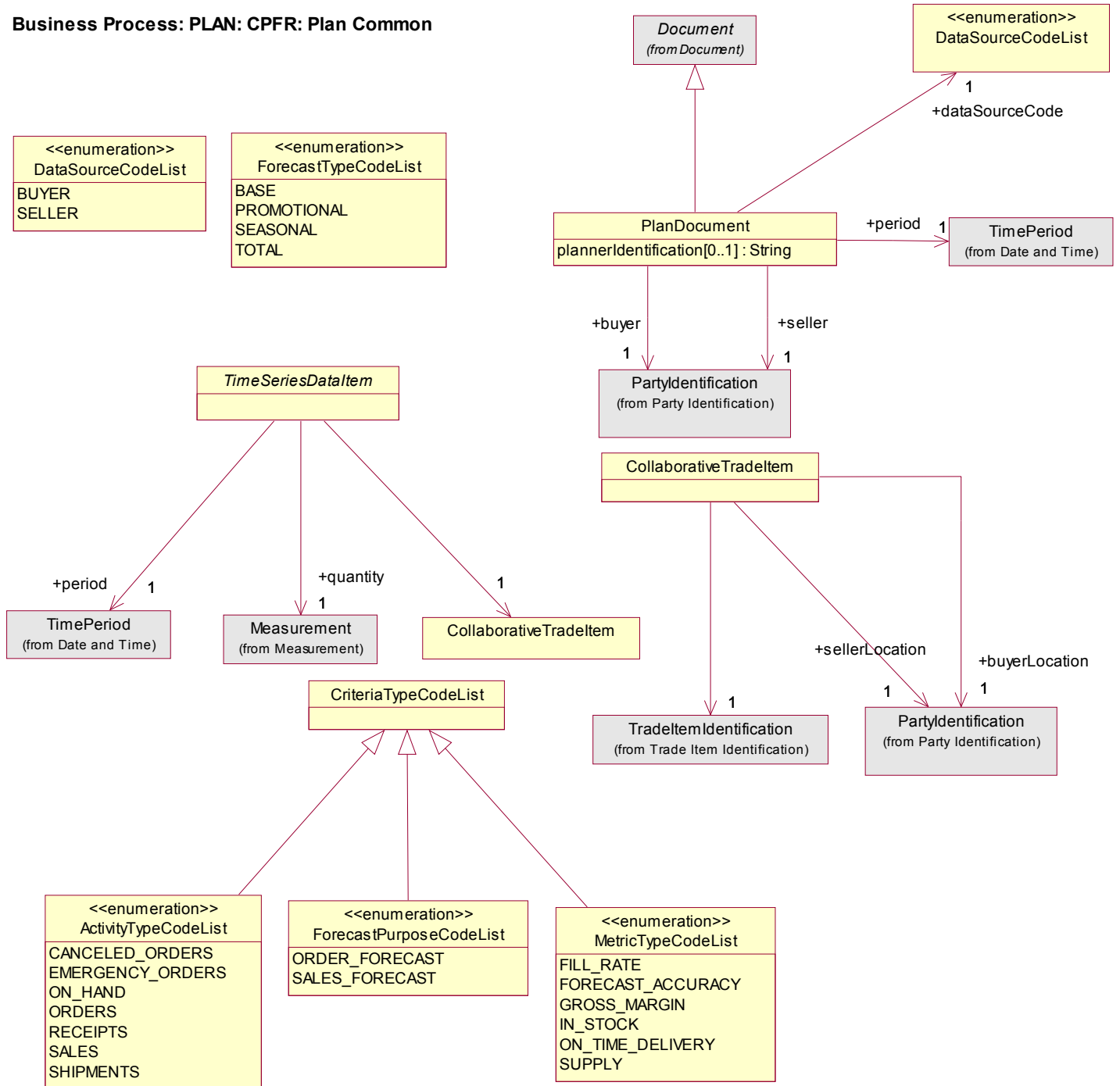
Note: See Common Global Data Dictionary for all common classes/attributes.

Business Process: PLAN: CPFR: Collaboration: Exception Notification



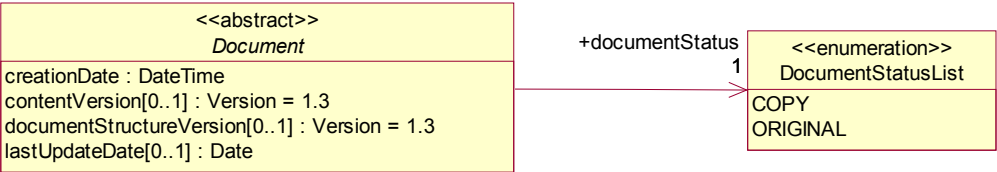
Appendix 2: Class Diagram from Plan Common

Business Process: PLAN: CPFR: Plan Common



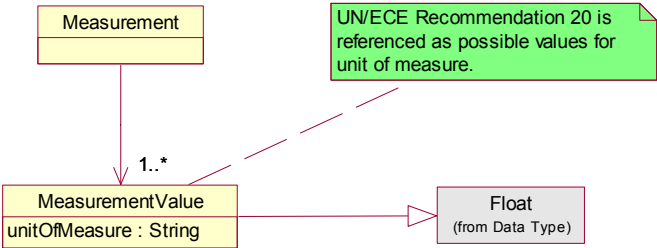
Appendix 3: Class Diagram from Document

Common Library :Common: Components: Document



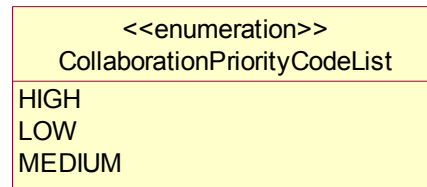
Appendix 4: Class Diagram from Measurement

Common Library: Common: Components :Measurement



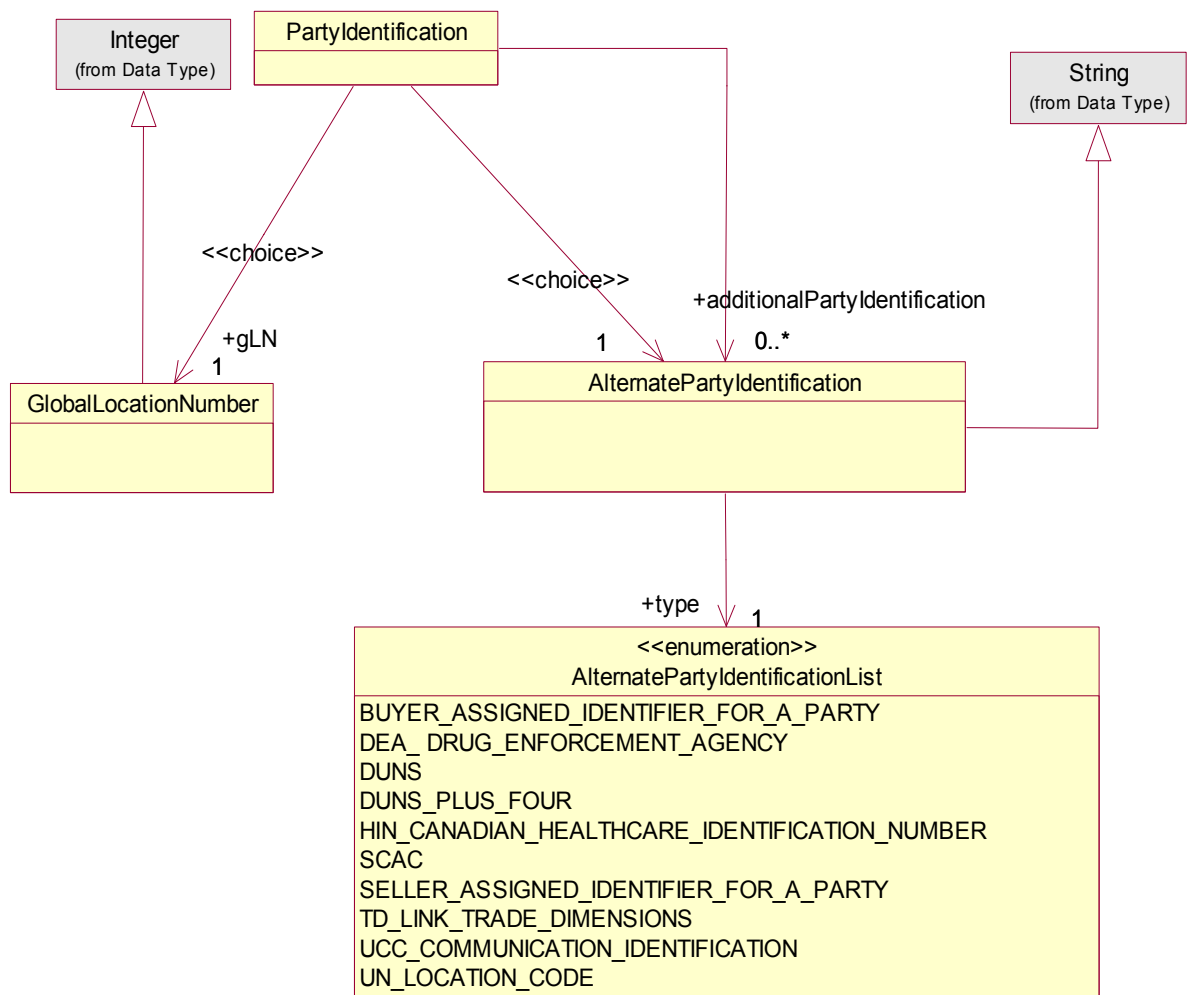
Appendix 5: Class Diagram from Collaboration Common

Business Process: PLAN: CPFR: Collaboration: Collaboration Common



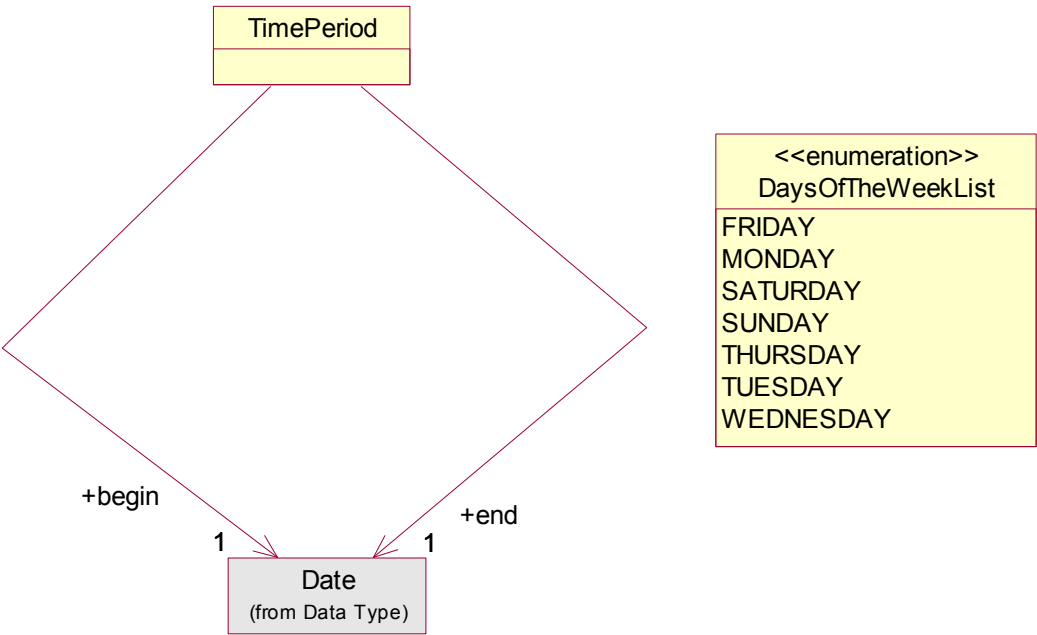
Appendix 6: Class Diagram from Party Identification

Common Library: Common: Identification: Party Identification



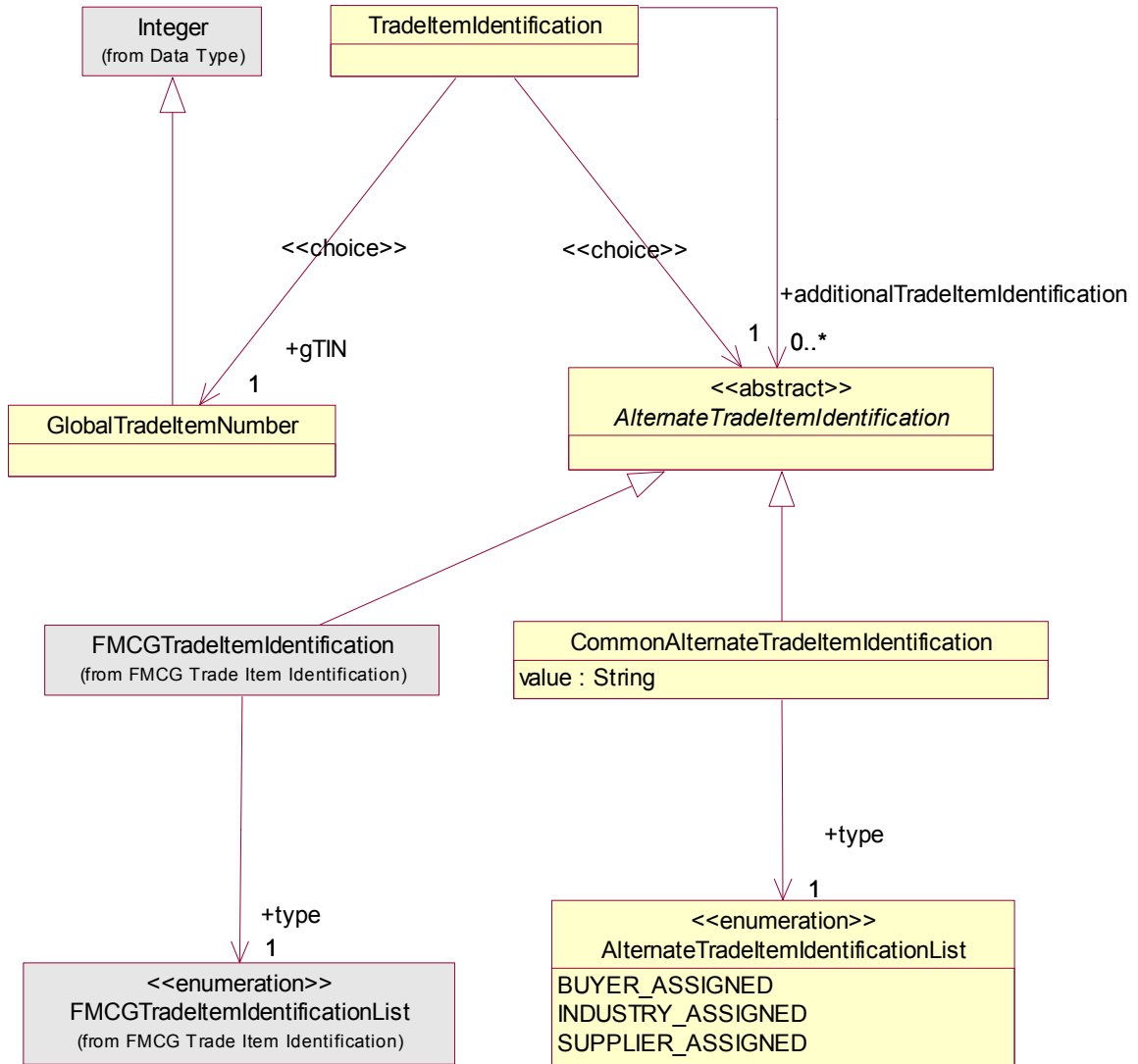
Appendix 7: Class Diagram from Date and Time

Common Library: Common: Components: Date and Time

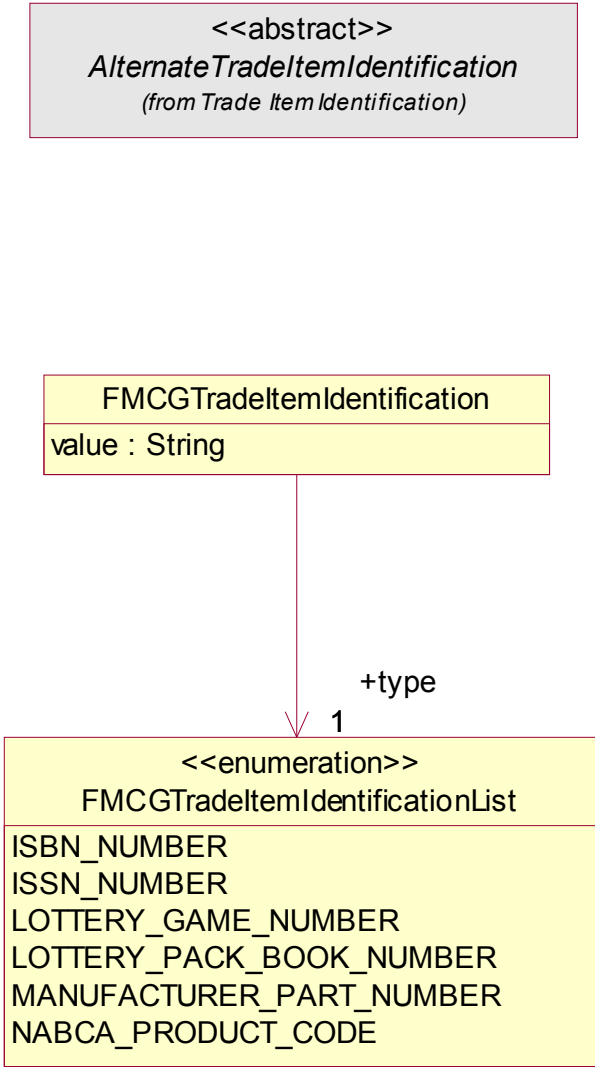


Appendix 8: Class Diagrams from Trade Item Identification

Common Library: Common: Identification: Trade Item Identification



Extension: FMCG: FMCG Trade Item Identification



Style Sheet

Description

This HTML has been created using a Style Sheet that is a visual representation of the data. It is not an actual Style Sheet, but an example of what a Style Sheet may look like.

HTML Example

| | | | |
|------------------------|---------------------------|---------------------------|---------------|
| Message MSG-123 | | | |
| Creation Date | January 10, 2004 12:00:01 | Representing Party | 0012345000065 |
| Msg From Party | 0012345000359 | Msg To Party | 0012345000058 |

| | | |
|--------------------|--------------------------------------|--------------------------------------|
| Transaction | Creator ID = MSG-123-20040110 | Content Owner = 0012345000359 |
|--------------------|--------------------------------------|--------------------------------------|

| | | |
|--------------------|--------------------------------------|--------------------------------------|
| Command ADD | Creator ID = MSG-123-20040110 | Content Owner = 0012345000359 |
|--------------------|--------------------------------------|--------------------------------------|

| | |
|-----------------------|--|
| Event Document | |
|-----------------------|--|

| | | | |
|-----------------------------|---------------------------|------------------------------|------------------|
| Document Information | | | |
| Creation Date | January 10, 2004 12:00:01 | Last Update Date | October 01, 2004 |
| Content Version | 1.3 | Doc Structure Version | 1.3 |
| Status | COPY | | |

Exception Notification Information

| | | | |
|---------------------|----------------|--------------------|----------------|
| Planner ID | UCC | Data Source | BUYER |
| Seller | 0012345000058 | Buyer | 0012345000359 |
| Period Begin | March 28, 2004 | Period End | March 29, 2004 |

Exceptions

Exception 1

| | | | |
|-------------------------------|---|---------------------------|----------------|
| Trade Item ID | 00123450000584, [fmcg] Alternate Item Identification (NABCA_PRODUCT_CODE) | | |
| Buyer Location | 0012345000359 | Seller Location | 0012345000058 |
| Effective Date Begin | March 28, 2004 | Effective Date End | March 28, 2004 |
| Variance | 120000 kgs | Exception Status | NEW |
| Collaboration Priority | HIGH | | |
| Activity Type | SALES | | |

Exception 2

| | | | |
|-------------------------------|---|---------------------------|----------------|
| Trade Item ID | 00123450000584, [fmcg] Alternate Item Identification (NABCA_PRODUCT_CODE) | | |
| Buyer Location | 0012345000359 | Seller Location | 0012345000058 |
| Effective Date Begin | March 28, 2004 | Effective Date End | March 28, 2004 |
| Variance | 120000 kgs | Exception Status | NEW |
| Collaboration Priority | HIGH | | |
| Metric Type | SUPPLY | | |

Exception 3

| | | | |
|-------------------------------|---|-----------------------------------|----------------|
| Trade Item ID | 00123450000584, [fmcg] Alternate Item Identification (NABCA_PRODUCT_CODE) | | |
| Buyer Location | 0012345000359 | Seller Location | 0012345000058 |
| Effective Date Begin | March 28, 2004 | Effective Date End | March 28, 2004 |
| Variance | 120000 kgs | Exception Status | NEW |
| Collaboration Priority | HIGH | | |
| Generation Time | 12:00:01 | Forecast Purpose | SALES_FORECAST |
| Forecast Type | BASE | Data Source | BUYER |
| Comparison Data Source | BUYER | Comparison Generation Time | 12:00:01 |

Exception 4

| | | | |
|-------------------------------|---|---------------------------|----------------|
| Trade Item ID | 00123450000584, [fmcg] Alternate Item Identification (NABCA_PRODUCT_CODE) | | |
| Buyer Location | 0012345000359 | Seller Location | 0012345000058 |
| Effective Date Begin | March 28, 2004 | Effective Date End | March 28, 2004 |
| Variance | 120000 kgs | Exception Status | NEW |
| Collaboration Priority | HIGH | | |
| Generation Time | 12:00:01 | Forecast Purpose | SALES_FORECAST |
| Forecast Type | BASE | Data Source | BUYER |

GLOBAL DATA DICTIONARY

1.0 Exception Notification Class Data Descriptions v1.3

| Class Name | Role Name | Enumerated Value for List Class | Attribute Name | Description | Min/Max Size | M/O | EAN.UCC XSD |
|----------------------------------|-----------------------------------|---------------------------------|----------------|---|--------------|-----|----------------------|
| ActivityTypeCodeList | activityType | | | TimeSeriesDataItem is an external class that originates in Plan Common. This class identifies the Activity Type Code for an operational exception. The Activity Type Code includes the following Business Attributes: Cancelled orders, Emergency Orders, OnHand, Orders, Receipts, Sales, Shipments. | | M | PlanComponentLibrary |
| | | CANCELED_ORDERS | | Canceled Orders | | | |
| | | EMERGENCY_ORDERS | | Emergency Orders | | | |
| | | ON_HAND | | On hand | | | |
| | | ORDERS | | Orders | | | |
| | | RECEIPTS | | Receipts | | | |
| | | SALES | | Sales | | | |
| | | SHIPMENTS | | Shipments | | | |
| AlternateTradeItemIdentification | additionalTradeItemIdentification | | | AlternateTradeItemIdentification is an abstract class from Item Identification used to identify a value for item identification other than GTIN. | | O | Identification |

| | | | | | | | |
|--------------------------------------|-----------------------|-------------------|--|--|--|---|---------------------|
| AlternateTradeItemIdentificationList | | | | Contains an enumeration list from the CommonAlternateTradeItemIdentificationClass. | | M | Identification |
| | | BUYER_ASSIGNED | | This optional code will be used to cross-reference the Vendors internal trade item number to the GTIN in a one-to-one relationship. | | | |
| | | INDUSTRY_ASSIGNED | | This optional code will be used to cross-reference the Vendors internal trade item number to the GTIN in a one-to-one relationship. | | | |
| | | SELLER_ASSIGNED | | This optional code will be used to cross-reference the Vendors internal trade item number to the GTIN in a one-to-one relationship. | | | |
| CollaborationPriorityCodeList | collaborationPriority | | | Each exception shall have an assigned collaboration priority code. This class provides the codes. The collaboration priority code list has the following attributes: ·High ·Low ·Medium | | O | CollaborationCommon |
| | | HIGH | | High priority exception | | | |
| | | LOW | | Low priority exception | | | |
| | | MEDIUM | | Medium priority exception | | | |

| | | | | | | | |
|--|----------------------|--------|--------------------------|---|------|---|----------------------|
| CollaborativeTradeItem | | | | This external class originates in Plan Common and is a class that is used in more than one CPFR class diagram. Collaborative Trade Item identifies the product with the buyer and seller locations. | | M | PlanComponentLibrary |
| CommonAlternateTradeItemIdentification | | | | Industry neutral Trade Item Identification. | | M | Identification |
| | | | value | The default value to be used for the field when that field is not present in the file. | 1/80 | M | |
| DataSourceCodeList | comparisonDataSource | | | DataSourceCodeList is an external class that originates in Plan Common. The data source code list has the following attributes: ·Buyer ·Seller | | M | PlanComponentLibrary |
| | dataSource | | | | | M | |
| | dataSourceCode | | | | | M | |
| | | BUYER | | buyer | | | |
| | | SELLER | | seller | | | |
| Date | begin | | | | | M | |
| | end | | | | | | |
| Document | | | | This class is used to specify the basic information about the context of the message. | | M | Components |
| | | | creationDate | DateTime | | | |
| | | | contentVersion | Version = 1.3 | | | |
| | | | documentStructureVersion | Version = 1.3 | | | |

| | | | | | | | |
|-----------------------------|-----------------|--------------|----------------|--|--|---|-----------------------|
| | | | lastUpdateDate | Date | | | |
| DocumentStatusList | documentStatus | | | Indicates if the document is a copy or an original. | | M | Components |
| | | COPY | | A copy of the original document | | | |
| | | ORIGINAL | | The original document | | | |
| Exception | exception | | | This class links the type of exception, the collaboration priority code list, exception status code list, time period and collaborative trade item to an exception notification. This class has no attributes. | | M | ExceptionNotification |
| ExceptionNotification | | | | This is the root class for Exception Notification. | | M | ExceptionNotification |
| ExceptionStatusCodeList | exceptionStatus | | | Each exception shall have a designated exception status. This class provides the codes. The Exception Status Code List has the following attributes: ·Acknowledged ·New ·Resolved ·Superseded ·Unresolvable | | M | ExceptionNotification |
| | | ACKNOWLEDGED | | Exception acknowledged | | | |
| | | NEW | | New exception | | | |
| | | RESOLVED | | Exception resolved | | | |
| | | SUPERSEDED | | Exception superseded | | | |
| | | UNRESOLVABLE | | Exception unresolved | | | |
| FMCGTradeItemIdentification | | | | | | O | FMCGIdentification |

| | | | | | | | |
|---------------------------------|------|--------------------------|--------------------------------------|--|------|---|-----------------------|
| | | | value | The default value to be used for the field when that field is not present in the file. | 1/80 | M | |
| FMCGTradeItemIdentificationList | type | | | | | M | FMCGIdentification |
| | | ISBN_NUMBER | | ISBN Number | | | |
| | | ISSN_NUMBER | | ISSN Number | | | |
| | | LOTTERY_GAME_NUMBER | | Lottery Game Number | | | |
| | | LOTTERY_PACK_BOOK_NUMBER | | Lottery Pack Book Number | | | |
| | | MANUFACTURER_PART_NUMBER | | Manufacturer Part Number | | | |
| | | NABCA_PRODUCT_CODE | | NABCA Product Code | | | |
| ForecastAccuracyException | | | | This is one of the two kinds of forecast trade item exceptions. This class identifies the exception as a forecast accuracy exception. This class has no attributes. | | O | ExceptionNotification |
| ForecastComparisonException | | | | This is one of the two kinds of forecast trade item exceptions. This class compares the buyer and seller data source(s) and identifies the time basis of comparison. The Forecast Comparison Exception has one attribute: Comparison forecast generation date. | | O | ExceptionNotification |
| | | | comparisonForecastGenerationDateTime | The date and time that the comparison forecast was generated, for identification purposes. | 1/13 | M | |

| | | | | | | | |
|---------------------------|-----------------|----------------|----------------------------|---|------|---|-----------------------|
| ForecastDataItemException | | | forecastGenerationDateTime | This is one of the three types of exceptions. This class provides the kind of forecast exception, identifies the purpose of the forecast, the source of data and identifies the time basis for the exception. | | O | ExceptionNotification |
| ForecastPurposeCodeList | forecastPurpose | | | This external class originates in Plan Common and is a class that is used in more than one CPFR(r) class diagram. There are two types of forecasts based upon the purpose of the forecast and a code identifies the purpose of the forecast with the variance. | | M | PlanComponentLibrary |
| | | ORDER_FORECAST | | Order Forecast | | | |
| | | SALES_FORECAST | | Sales Forecast | | | |
| ForecastTypeCodeList | forecastType | | | This external class originates in Plan Common and is a class that is used in more than one CPFR(r) class diagram. This class identifies the forecast type codes. The Forecast Purpose Code List has the following attributes: base, Promotional, Seasonal, Total. | 1/25 | O | PlanComponentLibrary |
| | | BASE | | Base | | | |
| | | PROMOTIONAL | | Promotional | | | |
| | | SEASONAL | | Seasonal | | | |
| | | TOTAL | | Total | | | |

| | | | | | | | |
|-----------------------|----------|--|---------------|--|------|---|-----------------------|
| GlobalTradeItemNumber | gTIN | | | A particular Global trade item Number, a numerical value used to uniquely identify a trade item. A Trade item is any trade item (product or service) upon which there is a need to retrieve pre-defined information. | | O | Identification |
| Measurement | variance | | | This external class originates in Measurement and is a class that is used in more than one class diagram. The measurement class provides the value for the actual impact. | | M | Components |
| MeasurementValue | | | | This external class originates in Measurement and is a class that is used in more than one CPFR class diagram. This class has an attribute unit of measure and allows for the value of the measurement. | | M | Components |
| | | | unitOfMeasure | UN/ECE Recommendation 20. Unit of measure code. | 1/15 | M | |
| MetricException | | | | This is one of the three types of exceptions. This class links the metric type code list to the exception. This class has no attributes | | O | ExceptionNotification |

| | | | | | | | |
|----------------------|------------|-------------------|--|---|--|---|-----------------------|
| MetricTypeCodeList | metricType | | | This external class originates in Plan Common and is a class that is used in more than one CPFR(r) class diagram. This class identifies the metric type code. The metric type code list has the following attributes:·Fill rate·Forecast accuracy·Gross Margin·In Stock·On Time Delivery·Supply | | M | PlanComponentLibrary |
| | | FILL_RATE | | Fill Rate | | | |
| | | FORECAST_ACCURACY | | Forecast Accuracy | | | |
| | | GROSS_MARGIN | | Gross Margin | | | |
| | | IN_STOCK | | In Stock | | | |
| | | ON_TIME_DELIVERY | | On Time Delivery | | | |
| | | SUPPLY | | Supply | | | |
| OperationalException | | | | This is one of the three types of exceptions. This class links the activity type code list to the exception. This class has no attributes. | | O | ExceptionNotification |

| | | | | | | |
|---------------------|----------------|--|--|--|---|----------------|
| PartyIdentification | buyer | | | There is a choice of selecting either a GLN (Recommended) or Alternate Party Identification as your primary party identification. Additionally, optional party identification, which cannot be GLN may be included. For example you may select one GLN as your one GLN as your primary party identification with additional party identification (ie. GLN cross referenced to DUNS or you may select an Alternate as your primary party identification with reference to additional party identification alternates). If you elect to use a DUNS number as your primary party identification, you may cross-reference this to another alternate number such as a buyer assigned customer number. However, again GLN may not be used as the additional alternate. | M | Identification |
| | buyerLocation | | | | M | |
| | seller | | | | M | |
| | sellerLocation | | | | M | |

| | | | | | | | |
|-------------------------|---------------|--|-----------------------|---|------|---|----------------------|
| PlanDocument | | | | This external class originates in Plan Common and is a class that is used in more than one CPFR class diagram. Plan Document class is the EAN-UCC System equivalent to CPFR Message class. This class has an attribute that provides the identification of the planner, identifies the source of the data, the time period for the document and the buyer and seller. | | M | PlanComponentLibrary |
| | | | plannerIdentification | Generic field to denote the specific planner involved with planning this event. This can be either Seller assigned or Buyer assigned. | 1/80 | M | |
| TimePeriod | effectiveDate | | | This external class originates in Date and Time and is a class that is used in more than one class diagram. This class identifies the effective dates. | | M | Components |
| | period | | | | | M | |
| TradeItemIdentification | | | | A unique identification of the trade item or service. It is recommended to use the Global Trade Item Number (GTIN) as the primary trade item identification. | | M | Identification |

Instance File

Description

The Instance File is an example of what the schema may look like when it includes live data. This can be used as comparison to a completed schema and can serve as a point of reference for development.

Instance File Example

```
<?xml version="1.0" encoding="UTF-8"?>
<?xml-stylesheet type="text/xsl" href="../../4_XSL/Main.xsl"?>
<!-- This is a sample file-->
<eanucc:envelope xmlns:xsi="http://www.w3.org/2001/XMLSchema-instance"
xmlns:eanucc="http://www.ean-ucc.org/schemas/1.3/eanucc" xmlns:fmcg="http://www.ean-ucc.org/schemas/1.3/fmcg" xsi:schemaLocation="http://www.ean-ucc.org/schemas/1.3/eanucc
../2_XSD_PROXY/ExceptionNotificationProxy.xsd" communicationVersion="1.3">
  <messageHeader creationDate="2004-01-10T12:00:01">
    <userId>163485</userId>
    <password>MJK1635K</password>
    <messageIdentifier>MSG-123</messageIdentifier>
    <to>
      <gln>0012345000058</gln>
    </to>
    <from>
      <gln>0012345000359</gln>
    </from>
    <representingParty>
      <gln>0012345000065</gln>
    </representingParty>
  </messageHeader>
  <body>
    <eanucc:transaction>
      <entityIdentification>
        <uniqueCreatorIdentification> MSG-123-20040110</uniqueCreatorIdentification>
        <contentOwner>
          <gln>0012345000359</gln>
        </contentOwner>
      </entityIdentification>
      <command>
        <eanucc:documentCommand>
          <documentCommandHeader type="ADD">
            <entityIdentification>
              <uniqueCreatorIdentification> MSG-123-
20040110</uniqueCreatorIdentification>
              <contentOwner>
                <gln>0012345000359</gln>
              </contentOwner>
            </entityIdentification>
          </documentCommandHeader>
          <documentCommandOperand>
```

```

        <fmcg:value>Alternate Item Identification</fmcg:value>
      </additionalTradelItemIdentification>
    </tradelItemIdentification>
    <buyerLocation>
      <gln>0012345000359</gln>
    </buyerLocation>
    <sellerLocation>
      <gln>0012345000058</gln>
    </sellerLocation>
  </collaborativeTradelItem>
  <effectiveDate begin="2004-03-28" end="2004-03-28"/>
  <variance>
    <measurementValue
unitOfMeasure="kgs">120000</measurementValue>
    </variance>
    <forecastGenerationDateTime>12:00:01</forecastGenerationDateTime>

    <comparisonForecastGenerationDateTime>12:00:01</comparisonForecastGenerationDateTime>
  </exception>
  <exception xsi:type="eanucc:ForecastAccuracyExceptionType"
collaborationPriority="HIGH" forecastType="BASE" forecastPurpose="SALES_FORECAST"
dataSource="BUYER" exceptionStatus="NEW">
    <collaborativeTradelItem>
      <tradelItemIdentification>
        <gtin>00123450000584</gtin>
        <additionalTradelItemIdentification
xsi:type="fmcg:TradelItemIdentificationType" type="NABCA_PRODUCT_CODE">
          <fmcg:value>Alternate Item Identification</fmcg:value>
        </additionalTradelItemIdentification>
      </tradelItemIdentification>
      <buyerLocation>
        <gln>0012345000359</gln>
      </buyerLocation>
      <sellerLocation>
        <gln>0012345000058</gln>
      </sellerLocation>
    </collaborativeTradelItem>
    <effectiveDate begin="2004-03-28" end="2004-03-28"/>
    <variance>
      <measurementValue
unitOfMeasure="kgs">120000</measurementValue>
      </variance>
      <forecastGenerationDateTime>12:00:01</forecastGenerationDateTime>
    </exception>
  </eanucc:exceptionNotification>
</documentCommandOperand>
</eanucc:documentCommand>
</command>
</eanucc:transaction>
</body>
</eanucc:envelope>

```