

EAN.UCC XML  
Business Message  
Standard For  
Bulk Data for Forecast  
Version 1.3  
July 2003



## **TABLE OF CONTENTS**

<b>PURPOSE .....</b>	<b>3</b>
BACKGROUND .....	4
<b>BUSINESS REQUIREMENTS DOCUMENT FOR BULK DATA FOR FORECAST.....</b>	<b>5</b>
1.0 INTRODUCTION.....	8
1.1 Overview – Bulk Data.....	8
1.2 Background.....	9
2.0 PLAYERS AND ROLES .....	10
3.0 REQUIREMENTS.....	11
3.1 General Requirements .....	11
3.2 Bulk Data for Forecast Use Case Scenario.....	11
4.0 HIGH LEVEL DIAGRAM.....	12
4.1 Bulk Data for Forecast.....	12
5.0 GLOBAL DATA DICTIONARY: DATA ATTRIBUTES FOR BULK DATA FOR FORECAST CLASSES .....	14
APPENDICES .....	15
Appendix 1: Class Diagram for Forecast Bulk Data .....	15
Appendix 2: Class Diagram from Bulk Common .....	16
Appendix 3: Class Diagram from Plan Common .....	17
Appendix 4: Class Diagram from Document.....	18
Appendix 5: Class Diagram from Party Identification.....	19
Appendix 6: Class Diagram from Date and Time .....	20
<b>STYLE SHEET.....</b>	<b>21</b>
DESCRIPTION.....	21
HTML EXAMPLE .....	21
<b>GLOBAL DATA DICTIONARY.....</b>	<b>23</b>
1.0 BULK FORECAST CLASS DATA DESCRIPTIONS V1.3 .....	23
<b>INSTANCE FILE .....</b>	<b>32</b>
DESCRIPTION.....	32
INSTANCE FILE EXAMPLE.....	32

## **Purpose**

The purpose of this Business Message Standard is to provide the necessary information to implement this message as part of the EAN.UCC System. The information contained within this document is a direct result of the work conducted by the EAN.UCC's Plan Business Requirements Group.

The content of this document is actually a collection of material from several different sources to create a single source of information that will provide the necessary basics to understand and implement this EAN.UCC Business Message Standard. The core of this document originates from the Business Requirements Document that is created by the Business Requirements Groups to define the business needs that are to be addressed by this Message. The document then provides the technical details needed to implement the message: a report from the Global Data Dictionary, StyleSheet and Instance File.

This Business Message Standard is meant to be used in conjunction with the EAN.UCC XML Schemas that are available on the EAN and UCC websites. The implementer of these standards needs to be aware of the interrelationship amongst the XML Schemas and the importance of using only interoperable versions.

The reader will notice as they progress through this document that there are several different 'levels' of information that is presented. We begin with the business rationale for the message and then move into the technical details of how and what is needed to exchange this message. This design is deliberate to reach the broadest audience and to meet their needs. Based upon the reader's experience and intentions, specific sections of this document may be more valuable than others. This design and content of this document is based upon the direct feedback from our user community and as such, we are constantly revising and refining how and what we present.

## Background

<b>EAN.UCC Business Message Standard:</b>	<b>Bulk Data for Forecast</b>	
<b>Business Requirement Group:</b>	<b>Plan</b>	
<b>Business Requirement Document:</b>	<b>Bulk Data for Forecast</b>	
<b>Business Requirements Group Manager:</b>	<b>Andrew Hearn</b>	<b>Uniform Code Council</b>
<b>Global Data Dictionary:</b>	<b>EAN.UCC Global Data Dictionary v1.3</b>	
<b>Schemas:</b>	<b>EAN.UCC Schemas v1.3</b>	
<b>Schemas have been tested on Parser(s) and Version(s):</b>	<b>XML Spy Version 4.4, Xerces, XSV</b>	

***Business Requirements Group  
(BRG)***

**Business Requirements  
Document For**

**BULK DATA  
For FORECAST  
Version 0.2.3  
June 30, 2003**

## **DOCUMENT HISTORY**

<b>Document Number:</b>	XXX-YYY-NNN
<b>Document Version:</b>	0.2.3
<b>Document Issue Date</b>	June 30, 2003

### **Document Summary**

<b>Document Title</b>	EAN•UCC – Business Requirements Document For Bulk Data for Forecast
<b>Owner</b>	Andrew Hearn – <a href="mailto:ahearn@uc-council.org">ahearn@uc-council.org</a>
<b>Abstract</b>	
<b>Status</b>	ITRG Approved

### **Document Change History Log**

<b>Date of Change</b>	<b>Ver</b>	<b>Reason for Change</b>	<b>Summary of Change</b>	<b>CCR #</b>
September 25, 2001	0.0.0	Initial issue		
September 28, 2001	0.1.0	Enhance class diagrams	Class diagrams, GDD and section 4 changed to meet xml schema needs. Business requirements have not been changed.	
October 26, 2001	0.2.0	Incorporate ITAG and EAN comments	Deleted date in footer. Revised 1.0, 1.1.2, 1.2 and added note to 5.0	
November 5, 2001	0.2.1	Editorial changes to diagrams	Edited 3.2.1. Removed attribute from bulk comment and added to high level class diagram & added definition to the GDD.	
March 26, 2003	0.2.2	Harmonisation version 1.3		
June 30, 2003	0.2.3	Incorporate ITRG Comments	Replaced Plan Common Class Diagram	

### **Approvals**

<b>Title</b>	<b>Name</b>	<b>Signature</b>	<b>Date</b>

1.0 INTRODUCTION.....	8
1.1 Overview – Bulk Data.....	8
1.2 Background.....	9
2.0 PLAYERS AND ROLES .....	10
3.0 REQUIREMENTS.....	11
3.1 General Requirements .....	11
3.2 Bulk Data for Forecast Use Case Scenario.....	11
4.0 HIGH LEVEL DIAGRAM.....	12
4.1 Bulk Data for Forecast.....	12
5.0 GLOBAL DATA DICTIONARY: DATA ATTRIBUTES FOR BULK DATA FOR FORECAST CLASSES .....	14
APPENDICES .....	15
Appendix 1: Class Diagram for Forecast Bulk Data .....	15
Appendix 2: Class Diagram from Bulk Common .....	16
Appendix 3: Class Diagram from Plan CommonAppendix 4: Class Diagram from Document.....	17
Appendix 4: Class Diagram from Document.....	18
Appendix 5: Class Diagram from Party Identification.....	19
Appendix 6: Class Diagram from Date and Time .....	20

## 1.0 Introduction

Collaborative Planning Forecasting and Replenishment (CPFR®) is a well documented nine step process developed and maintained by the Voluntary Interindustry Commerce Standards Association (VICS) for use by trading partners.

In the CPFR® process Bulk Data for Forecast is a message format.

### 1.1 Overview – Bulk Data

Each bulk data message is a uniform series of records of a single message type. Records criteria include width, order of fields and default values.

A bulk data description may be provided with every batch file, or a single description may be used to describe all files of that type exchanged between a buyer and a seller.

#### 1.1.1 Purpose

The purpose of this Business Requirements Document is to document a process-to-data approach. The Unified Modeling Language (UML) is used for notation. Processes are clearly understood because of the use of formal modeling with the UML models. Agreed to models permit the application of the data elements to support the processes. The biggest benefit of this process-to-data approach is the alignment of the model to fit the business need.

#### 1.1.2 Audience

The audience for this document is anyone involved in collaborative planning, forecasting and replenishment.

To better understand this business requirements document the audience should become familiar with the VICS CPFR® Process, the VICS CPFR® XML Messaging Model, June 13, 2001 and VICS Collaborative Planning Forecasting and Replenishment (CPFR®), Global Commerce Initiative Recommendation, June 30, 2001 as these documents provide the basis and context of the business requirements.

CPFR® is the registered trademark of VICS, the Voluntary Interindustry Commerce Standards Association



### **1.1.3 Document Organization**

This document has the following organization:

- Section 1 – Provides background information for this effort
- Section 2 – Describes the players and roles that will be referred to in this document (Actors)
- Section 3 – Describes the general business requirements that have been identified
- Section 4 – UML Model Information and Examples
  - High Level Class Diagram
- Section 5 – Global Data Dictionary

## **1.2 Background**

The Bulk Data for Forecast Business Requirements Document is the output of the VICS CPFR<sup>®</sup>, GCI, the Plan BRG (Business Requirements Group) and EAN ECEG (Electronic Commerce Expert Group). It is the responsibility of the BRG's to provide the business requirements for the process of the creation and maintenance of the business and data models. The BRG's develop and maintain business process models and supporting use case diagrams, logic diagrams and data requirements for a specific business function in a global electronic commerce environment. The BRG's review and resolve change requests. The BRG's provide guidance for the technical application of new business processes and changes to existing business processes. Currently, BRG's exist for the following business processes: Align Data, Plan, Order, Despatch, Pay, After Sales Services, Asset Management, Manufacturing and Point Of Service. EAN (ECEG) covers similar functionality, through a pool of experts that liaises with the local users, ensuring the effective gathering of the business requirements from its network of national Member Organisations world-wide.

The following are the main documents used in developing this work.

EAN•UCC Global Business Model (Process and Data) “The Trade Of Goods and Services”, October 1999

VICS CPFR® XML Messaging Model, June 13, 2001

VICS Collaborative Planning Forecasting and Replenishment (CPFR®), Global Commerce Initiative Recommendation, June 30, 2001

Acknowledgement is also due to the work going on in the XML environment.

ebXML/SOAP  
eCo Framework (Common Business Library)  
RosettaNet  
UN/CEFACT EWG  
W3C

## **2.0 Players and Roles**

Both trading partners, the buyer and the seller, collaborate on the exchange of messages.

## 3.0 Requirements

### 3.1 General Requirements

Bulk data for forecast restricts the transfer of bulk data to forecast data.

Records may be fixed width, with a specific beginning and ending column numbers, or delimited (typically with a comma, space or tab character).

Fields may be in any order.

Default values may be specified for required items that are not in the file itself.

The path name identifies the specific file to be interpreted using a batch description; a file extension may also be specified, if all files with a particular extension share the same format.

### 3.2 Bulk Data for Forecast Use Case Scenario

#### 3.2.1 Business Opportunities/Problem Statement:

The objective is to establish and identify the criteria for the exchange of bulk data relative to forecasting.

#### 3.2.2 Stakeholders: Actors

Bulk data for forecast is a two-actor system involving a buyer and a seller.

#### 3.2.3 Process Start State

The start-state for exchange of bulk data for forecast is part of Step 1 of the CPFR<sup>®</sup> process.

#### 3.2.4 Process End State

The end-state is the exchange of the bulk data.

#### 3.2.5 Preconditions

Both trading partners engage in CPFR<sup>®</sup> Step 1.

#### 3.2.6 Successful End Condition

The bulk data for forecast is sent and received.

#### 3.2.7 Failed End Condition

The bulk data for forecast can be neither sent nor received.

### 3.2.8 Main Process Flow

1. Both trading partners have started CPFR<sup>®</sup> Step 1
2. Both trading partners agree on the fixed record width
3. Both trading partners agree on default values
4. Both trading partners agree on description rules
5. Both trading partners create, send and receive a trial message
6. Both trading partners exchange bulk forecast data

## 4.0 High Level Diagram

This section refers to the high level class diagram. The color coding on the diagram is as follows:

- Red indicates that the class is the root class for the diagram.
- Grey indicates that the class is outside of or external to the root class.
- Yellow indicates that the class pertains specifically to the root class.

### 4.1 Bulk Data for Forecast

The Bulk Data for Forecast classes are pictured on the high level class diagram. Classes are listed here alphabetically. These include:

- Bulk Data
- Bulk Record
- Forecast Bulk Data
- Forecast Bulk Record
- Forecast Default Field
- Forecast Delimited Field
- Forecast Delimited Record
- Forecast Field
- Forecast Field Type Code List
- Forecast Fixed Width Field
- Forecast Fixed Width Record

#### 4.1.1 Bulk Data

This external class originates in Bulk Common and is a class that is used in more than one CPFR<sup>®</sup> class diagram. This is a type of plan document and links data to a bulk record.

#### 4.1.2 Bulk Record

This external class originated in Bulk Common and is a class that is used in more than one CPFR<sup>®</sup> bulk class diagram. The bulk record links company ID format(s), location ID format(s) and date format(s).

#### 4.1.3 Forecast Bulk Data

This is the root class for bulk data for forecast and links a forecast bulk record to bulk data.

#### 4.1.4 Forecast Bulk Record

This class provides the record descriptor for the forecast bulk data and identifies the default fields, and the table as fixed field width or delimited field.

#### 4.1.5 Forecast Default Field

Forecast bulk records may have an assigned default or defaults. The forecast default field provides the default and has one attribute:

- Value

#### 4.1.6 Forecast Delimited Field

Each forecast delimited record has one or more delimited fields. This class has no attributes.

#### 4.1.7 Forecast Delimited Record

A forecast bulk record may be established as a forecast delimited record. This class provides the basis for the record. The forecast delimited record has two attributes:

Delimiter

Are string fields quote delimited

#### 4.1.8 Forecast Field

The forecast field class provides for the assignment of a field type code to the fields of a record. The forecast field class has no attributes.

#### 4.1.9 Forecast Field Type Code List

Each field will have an assigned forecast field type from the forecast field type code list. Forecast field type code list has the following attributes:

Forecast purpose code

Forecast status code

Forecast type code

#### 4.1.10 Forecast Fixed Width Field

Each forecast fixed width record may have one or more fields. This class links the fields to the record. The forecast fixed width field has two attributes:

Begin column number

End column number

#### 4.1.11 Forecast Fixed Width Record

Each forecast bulk record may be either a fixed width record or a delimited record. This class links fixed fields to the record. This class has one attribute to identify the number of columns.

- Number of columns

## 5.0 Global Data Dictionary: Data Attributes for Bulk Data for Forecast Classes

### ***ForecastBulkData***

### ***ForecastBulkRecord***

### ***ForecastDefaultField***

value: The default value to be used for the field when that field is not present in the file.

### ***ForecastDelimitedField***

### ***ForecastDelimitedRecord***

delimiter: Single character to be used as a field delimiter (e.g., comma, tab, or asterisk)

areStringFieldsQuoteDelimited: Indicator of whether string fields within the record are delimited by quotation marks.

### ***ForecastField***

### ***ForecastFieldTypeCodeList***

FORECAST\_PURPOSE\_CODE: Indicator of whether a forecast is a sales forecast or order forecast.

FORECAST\_STATUS\_CODE: Indicator of whether a forecast is modifiable or frozen.

FORECAST\_TYPE\_CODE: Indicator of the type of demand represented in a forecast item: base, promotional, seasonal or total.

### ***ForecastFixedWidthField***

beginColumnNumber: The beginning column number of the field. (The first column is column 1)

endColumnNumber: The ending column number of the field.

### ***ForecastFixedWidthRecord***

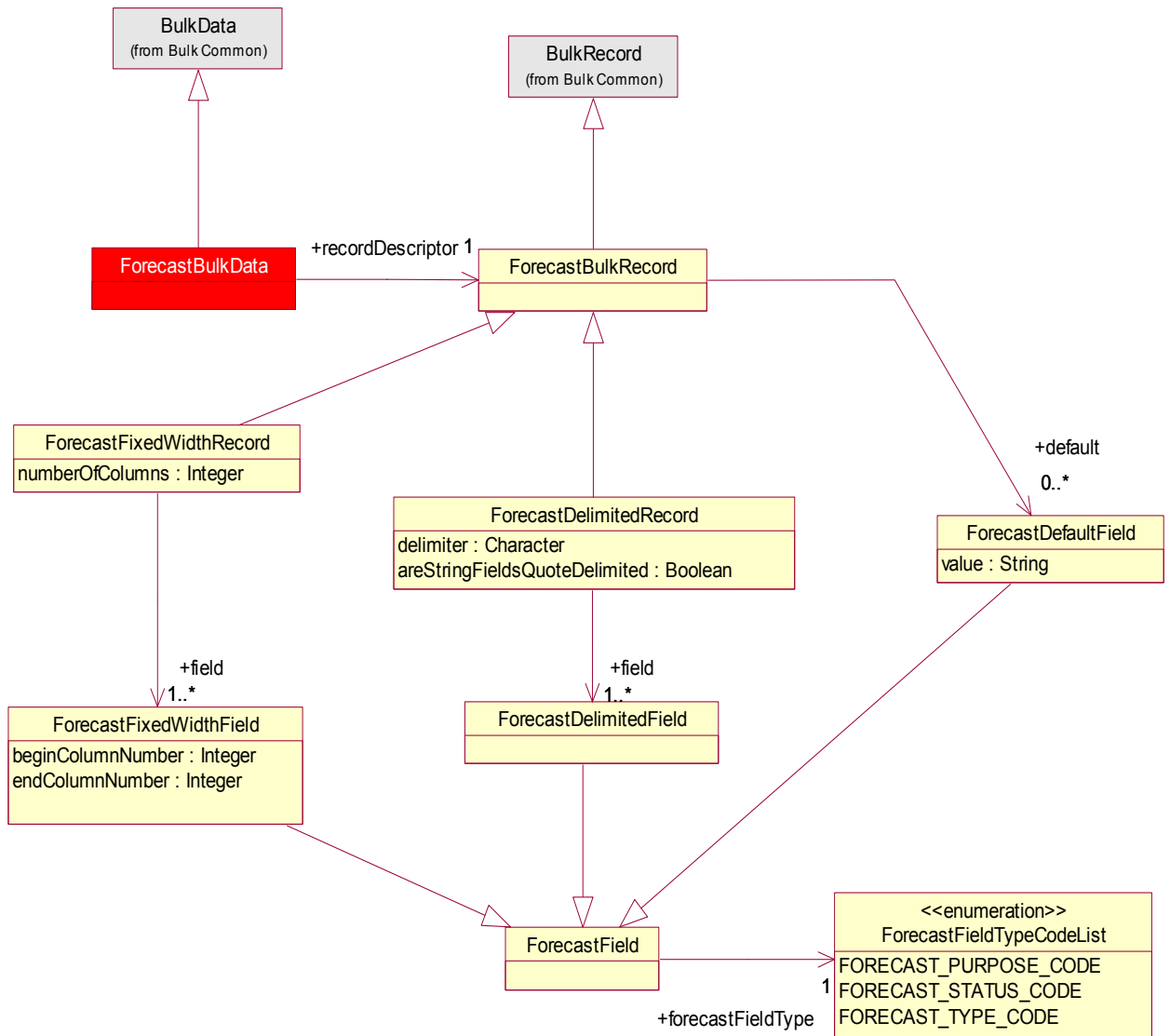
numberOfColumns: A count of the number of fields expected in Batch messages of this type.

**Note:** See Common Global Data Dictionary for all common classes/attributes.

## Appendices

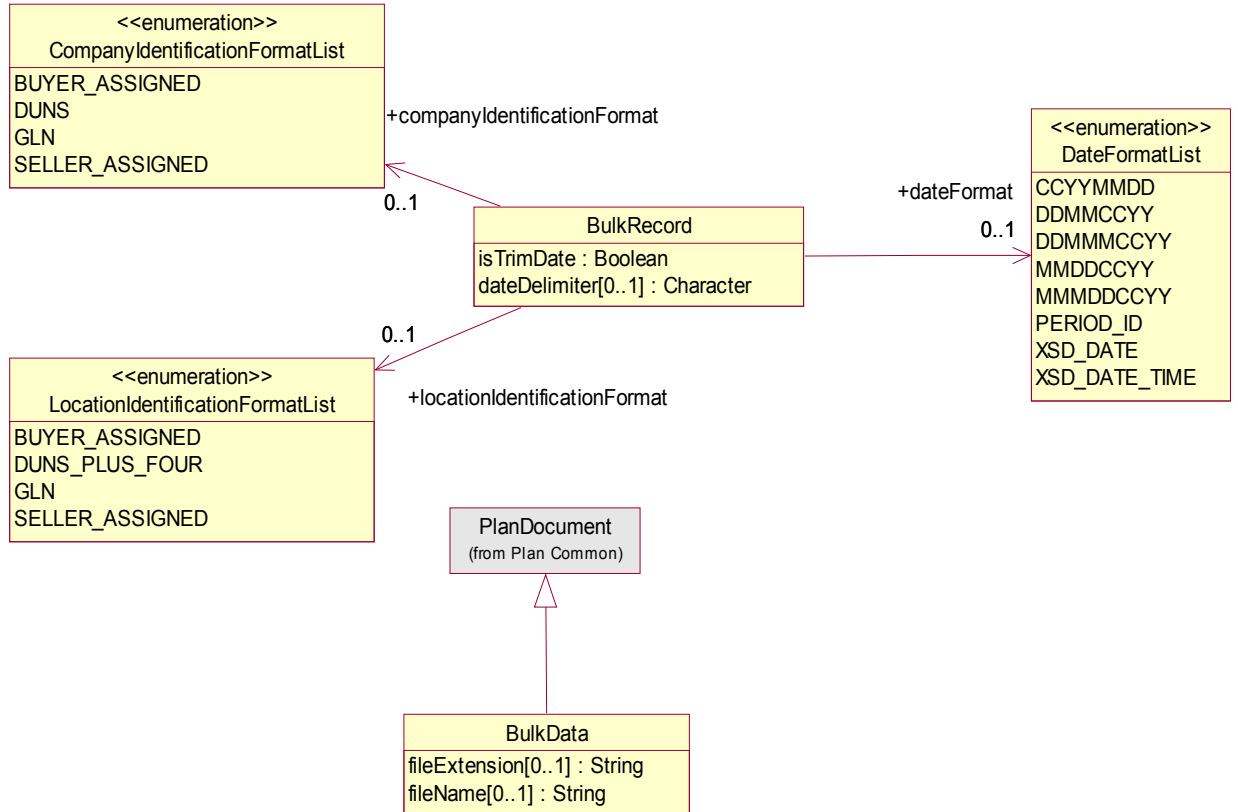
### Appendix 1: Class Diagram for Forecast Bulk Data

#### Business Process: PLAN: CPFR: Bulk: Forecast Bulk Data



## Appendix 2: Class Diagram from Bulk Common

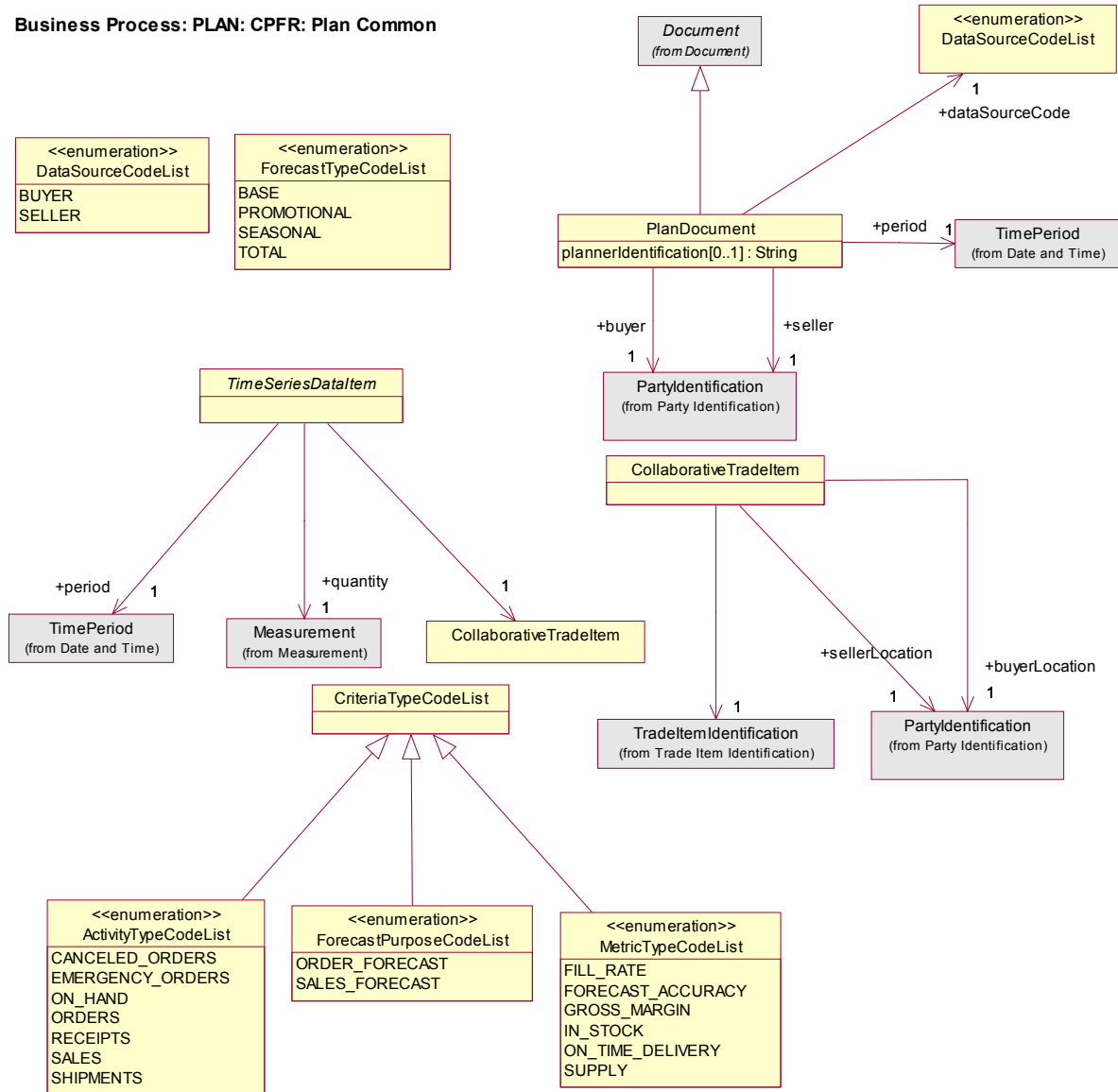
### Business Process: PLAN: CPFR: Bulk: Bulk Common





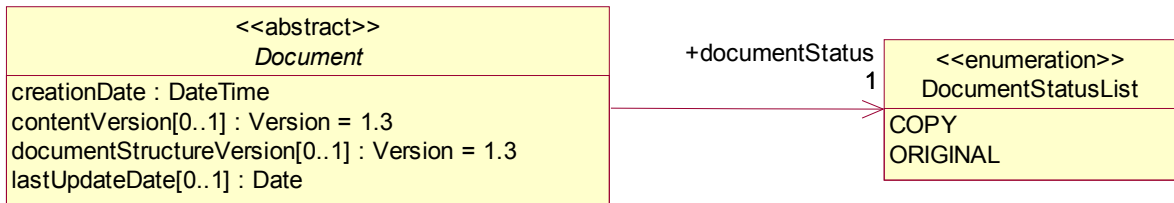
## Appendix 3: Class Diagram from Plan Common

### Business Process: PLAN: CPFR: Plan Common



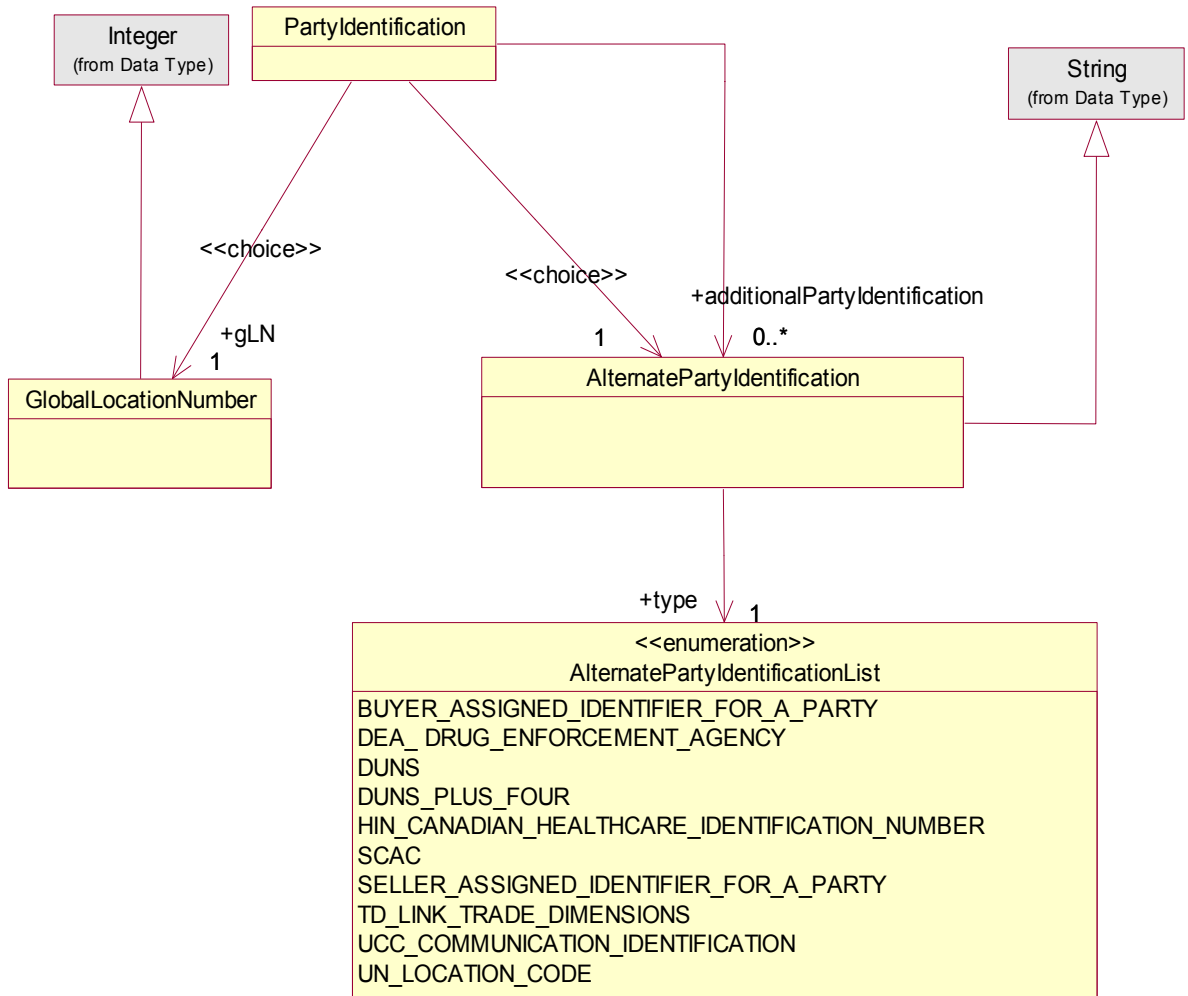
## Appendix 4: Class Diagram from Document

### Common Library :Common: Components: Document



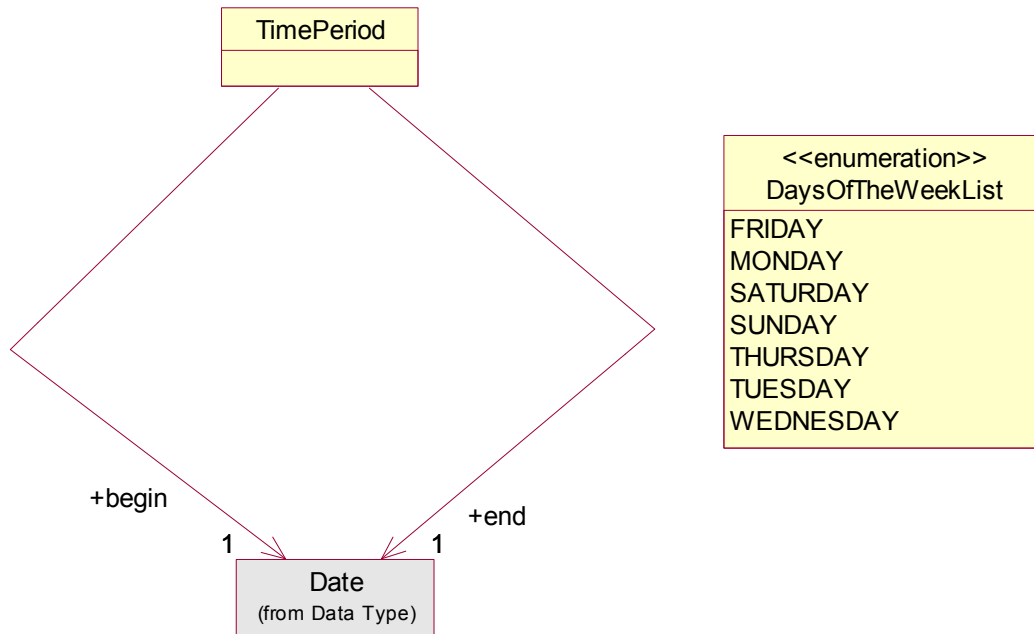
## Appendix 5: Class Diagram from Party Identification

### Common Library: Common: Identification: Party Identification



## Appendix 6: Class Diagram from Date and Time

### Common Library: Common: Components: Date and Time



## Style Sheet

### Description

This HTML has been created using a Style Sheet that is a visual representation of the data. It is not an actual Style Sheet, but an example of what a Style Sheet may look like.

### HTML Example

**Message MSG-123**

<b>Creation Date</b>	January 10, 2004 12:00:01	<b>Representing Party</b>	0012345000065
<b>Msg From Party</b>	0012345000359	<b>Msg To Party</b>	0012345000058

**Transaction****Creator ID = MSG-123-20040110****Content Owner =**  
**0012345000359****Command ADD****Creator ID = MSG-123-**  
**20040110****Content Owner =**  
**0012345000359****Forecast Bulk Data Document****Document Information**

<b>Creation Date</b>	January 10, 2004 12:00:01	<b>Last Update Date</b>	October 01, 2004
<b>Content Version</b>	1.3	<b>Doc Structure Version</b>	1.3
<b>Status</b>	COPY		

#### Forecast Bulk Data Information

<b>Planner ID</b>	UCC	<b>Data Source</b>	BUYER
<b>Seller</b>	0012345000058	<b>Buyer</b>	0012345000359
<b>Period Begin</b>	March 28, 2004	<b>Period End</b>	March 29, 2004
<b>File Extension</b>	xml	<b>File Name</b>	forecast

#### Record Descriptor

<b>Type</b>	eanucc:ForecastDelimitedRecordType	<b>Is Trim Date?</b>	yes
<b>Date Delimiter</b>	:	<b>Date Format</b>	CCYYMMDD
<b>Location ID Format</b>	SELLER_ASSIGNED	<b>Company ID Format</b>	BUYER_ASSIGNED
<b>Delimiter</b>	:	<b>Are String Fields Quote Delimited?</b>	yes

#### Defaults

Type	Value
FORECAST_PURPOSE_CODE	5978

#### Fields

Type
FORECAST_PURPOSE_CODE

## GLOBAL DATA DICTIONARY

### 1.0 Bulk Forecast Class Data Descriptions v1.3

Class Name	Role Name	Enumerated Value for List Class	Attribute Name	Description	Min/Max Size	M/O	EAN.UCC XSD
AlternatePartyIdentification	additionalPartyIdentification			Only one primary party identifier is used for each party. If an alternate identifier, other than GLN is used, there is no guarantee of data integrity across the process. It is the responsibility of the company electing the choice to ensure data integrity.		O	Identification
AlternatePartyIdentificationList	type			Only one primary party identifier is used for each party. If an alternate identifier, other than GLN is used, there is no guarantee of data integrity across the process. It is the responsibility of the company electing the choice to ensure data integrity.		M	Identification
		BUYER_ASSIGNED_IDENTIFIER_FOR_A_PARTY		This optional code will be used for cross-reference on a one-to-one relationship.			
		DEA_DRUG_ENFORCEMENT_AGENCY		This optional code will be used for cross-reference on a one-to-one relationship.			
		DUNS		This optional code will be used for cross-reference on a one-to-one relationship.			

		DUNS_PLUS_FOUR		This optional code will be used for cross-reference on a one-to-one relationship.			
		HIN_CANADIAN_HEALTHCARE_IDENTIFICATION_NUMBER		This optional code will be used for cross-reference on a one-to-one relationship.			
		SCAC		This optional code will be used for cross-reference on a one-to-one relationship.			
		SELLER_ASSIGNED_IDENTIFIER_FOR_A_PARTY		This optional code will be used for cross-reference on a one-to-one relationship.			
		TD_LINK_TRADE_DIMENSIONS		This optional code will be used for cross-reference on a one-to-one relationship.			
		UCC_COMMUNICATION_IDENTIFICATION		This optional code will be used for cross-reference on a one-to-one relationship.			
		UN_LOCATION_CODE		This optional code will be used for cross-reference on a one-to-one relationship.			
BulkData				This external class originates in Bulk Common and is a class that is used in more than one CPFR class diagram. This is a type of plan document and links data to a bulk record.		M	BulkCommon
			fileExtension	TBD	1/80	O	
			fileName	TBD	1/80	O	



BulkRecord				This external class originates in Bulk Common and is a class that is used in more than one CPFR bulk class diagram. The bulk record links company ID format(s), location ID format(s) and date format(s).		M	BulkCommon
			dateDelimiter	Date Delimiter		O	
			isTrimDate	A boolean field.		M	
CompanyIdentificationFormatList	companyIdentificationFormat			CompanyIdentificationFormatList is an external class that defines the allowable formats for Company Identification Formats.		O	BulkCommon
		BUYER_ASSIGNED		Buyer Assigned			
		DUNS		DUNS			
		GLN		GLN			
		SELLER_ASSIGNED		Seller Assigned			
DataSourceCodeList	dataSourceCode			DataSourceCode is an external class that originates in Plan Common. The data source code list has the following attributes: ·Buyer ·Seller		M	PlanComponentLibrary
		BUYER		Buyer			
		SELLER		Seller			
Date	begin					M	
	end						
DateFormatList	dateFormat			DateFormatList is an external class that defines the allowable formats for dates.		O	BulkCommon
		CCYYMMDD		CCYYMMDD			
		DDMMCCYY		DDMMCCYY			

		DDMMCCYY		DDMMCCYY			
		MMDDCCYY		MMDDCCYY			
		MMMDDCCYY		MMMDDCCYY			
		PERIOD_ID		Period ID			
		XSD_DATE		XSD Date			
		XSD_DATE_TIME		XSD Date Time			
Document				This class is used to specify the basic information about the context of the message.		M	Components
			creationDate	DateTime			
			contentVersion	Version = 1.3			
			documentStructureVersion	Version =1.3			
			lastUpdateDate	Date			
DocumentStatusList	documentStatus			Indicates if the document is a copy or an original.		M	Components
		COPY		A copy of the original document			
		ORIGINAL		The original document			
ForecastBulkData				The root class of the Bulk Data for Forecast.		M	ForecastBulkData
ForecastBulkRecord	recordDescriptor			This class provides the record descriptor for the forecastbulk data and identifies the default fields, and the table as fixed field width or delimited field.		M	ForecastBulkData
ForecastDefaultField	default			Forecast bulk records may have an assigned default or defaults. The forecast default field provides the default and has one attribute: * value		M	ForecastBulkData

			value	The default value to be used for the field when that field is not present in the file.	1/5	M	
ForecastDelimitedField	field			Each forecast delimited record has one or more delimited fields. The class has no attributes.		M	ForecastBulkData
ForecastDelimitedRecord				A forecast bulk record may be established as a forecast delimited record. The class provides the basis for the record. The forecast delimited record has two attributes: Are string field quotes delimited, Delimiter.		O	ForecastBulkData
			areStringFieldsQuotedDelimited	Indicator of whether string fields within the record are delimited by quotation marks	1/3	M	
			delimiter	Single character to be used as a field delimiter (e.g., comma, tab, or asterisk)	1/1	M	
ForecastField				The forecast field class provides for the assignment of a field type code to the fields of a record. The field class has no attributes.		M	ForecastBulkData
ForecastFieldTypeCodeList	forecastFieldType			Each field will have an assigned forecast field type code list. Forecast field type code list has the following attributes: * Forecast purpose code * Forecast status code * Forecast type code		M	ForecastBulkData
		FORECAST_PURPOSE_CODE		Indicator of whether a forecast is a sales forecast or an order forecast.			

		FORECAST_STATU S_CODE		Indicator of whether a forecast is modified or frozen.			
		FORECAST_TYPE_ CODE		Indicator of the type of demand represented in a forecast item: base, promotional, seasonal or total.			
ForecastFixedWidth Field	field			Each forecast fixed width record may have one or more fields. The class links the fields to the record. The forecast fixed width field has two attributes: * Begin column number * End column number		M	ForecastBulkD ata
			beginColumnNumber	The beginning column number of a field (The first column is column 1)	1/5	M	
			endColumnNumber	The ending column number of the field.	1/5	M	
ForecastFixedWidth Record				Each forecast bulk record may be either a fixed width record or a delimited record. This class links fixed fields to the record. The class has one attribute to identify the number of columns. * Number of columns		O	ForecastBulkD ata
			numberOfColumns	A count of the number of fields expected in batch messages of this type.	1/5	M	

GlobalLocationNumber	gLN			The Global Location Number (GLN) is a structured Identification of a physical location, legal or functional entity within an enterprise. The GLN is the recommended primary party identifier.		O	Identification
LocationIdentificationFormatList	locationIdentificationFormat			LocationIdentificationFormatList is an external class that defines the allowable formats for Location Identification.		O	BulkCommon
		BUYER_ASSIGNED		Buyer Assigned			
		DUNS_PLUS_FOUR		DUNS Plus Four			
		GLN		GLN			
		SELLER_ASSIGNED		Seller Assigned			

PartyIdentification	buyer			There is a choice of selecting either a GLN (Recommended) or Alternate Party Identification as your primary party identification. Additionally, optional party identification, which cannot be GLN may be included. For example you may select one GLN as your primary party identification with additional party identification (ie. GLN cross referenced to DUNS or you may select an alternate as your primary party identification with reference to additional party identification alternates). If you elect to use a DUNS number as your primary party identification, you may cross-reference this to another alternate number such as a buyer assigned customer number. However, again GLN may not be used as the additional alternate.	M	Identification
	seller				M	

PlanDocument				This external class originates in Plan Common and is a class that is used in more than one CPFR class diagram. Plan Document class is the EAN-UCC System equivalent to CPFR Message class. This class has an attribute that provides the identification of the planner, identifies the source of the data, the time period for the document and the buyer and seller.	M	PlanComponentLibrary
			plannerIdentification	Generic field to denote the specific planner involved with planning this event. This can be either Seller assigned or Buyer assigned.	O	
TimePeriod	period			This external class originates in Date and Time and is a class that is used in more than one class diagram. This class identifies the effective dates.	M	Components

## Instance File

### Description

The Instance File is an example of what the schema may look like when it includes live data. This can be used as comparison to a completed schema and can serve as a point of reference for development.

### Instance File Example

```
<?xml version="1.0" encoding="UTF-8"?>
<?xml-stylesheet type="text/xsl" href="../../4_XSL/Main.xsl"?>
<!-- This is a sample file-->
<eanucc:envelope xmlns:xsi="http://www.w3.org/2001/XMLSchema-instance"
xmlns:eanucc="http://www.ean-ucc.org/schemas/1.3/eanucc" xmlns:fmcg="http://www.ean-ucc.org/schemas/fmcg" xsi:schemaLocation="http://www.ean-ucc.org/schemas/1.3/eanucc
../2_XSD_PROXY/ForecastBulkDataProxy.xsd" communicationVersion="1.3">
  <messageHeader creationDate="2004-01-10T12:00:01">
    <userId>163485</userId>
    <password>MJK1635K</password>
    <messageIdentifier>MSG-123</messageIdentifier>
    <to>
      <gln>0012345000058</gln>
    </to>
    <from>
      <gln>0012345000359</gln>
    </from>
    <representingParty>
      <gln>0012345000065</gln>
    </representingParty>
  </messageHeader>
  <body>
    <eanucc:transaction>
      <entityIdentification>
        <uniqueCreatorIdentification> MSG-123-20040110</uniqueCreatorIdentification>
        <contentOwner>
          <gln>0012345000359</gln>
        </contentOwner>
      </entityIdentification>
      <command>
        <eanucc:documentCommand>
          <documentCommandHeader type="ADD">
            <entityIdentification>
              <uniqueCreatorIdentification> MSG-123-20040110</uniqueCreatorIdentification>
              <contentOwner>
                <gln>0012345000359</gln>
              </contentOwner>
            </entityIdentification>
          </documentCommandHeader>
          <documentCommandOperand>
            <eanucc:forecastBulkData creationDate="2004-01-10T12:00:01" documentStatus="COPY"
contentVersion="1.3" documentStructureVersion="1.3" lastUpdateDate="2004-10-01">
```



```

<plannerIdentification>UCC</plannerIdentification>
<dataSourceCode>BUYER</dataSourceCode>
<seller>
  <gln>0012345000058</gln>
</seller>
<buyer>
  <gln>0012345000359</gln>
</buyer>
<period begin="2004-03-28" end="2004-03-29"/>
<fileExtension>xml</fileExtension>
<fileName>forecast</fileName>
<recordDescriptor xsi:type="eanucc:ForecastDelimitedRecordType">
  <isTrimDate>true</isTrimDate>
  <dateDelimiter>.</dateDelimiter>
  <dateFormat>CCYYMMDD</dateFormat>
  <locationIdentificationFormat>SELLER_ASSIGNED</locationIdentificationFormat>
  <companyIdentificationFormat>BUYER_ASSIGNED</companyIdentificationFormat>
  <default forecastFieldType="FORECAST_PURPOSE_CODE">
    <value>5978</value>
  </default>
  <delimiter>.</delimiter>
  <areStringFieldsQuoteDelimited>true</areStringFieldsQuoteDelimited>
  <field forecastFieldType="FORECAST_PURPOSE_CODE"/>
</recordDescriptor>
</eanucc:forecastBulkData>
</documentCommandOperand>
</eanucc:documentCommand>
</command>
</eanucc:transaction>
</body>
</eanucc:envelope>

```